

PRODUCT DATASHEET

Recessed Panel light
HYD-P7-5W 6000K



Application

- Office
- Kitchen
- Rest room
- Corridor
- Shop

Benefits

- Flicker free.
- The light is soft and bright
- DOB, integrated design, stable structure
- High light transmission mask to ensure uniform light

Features

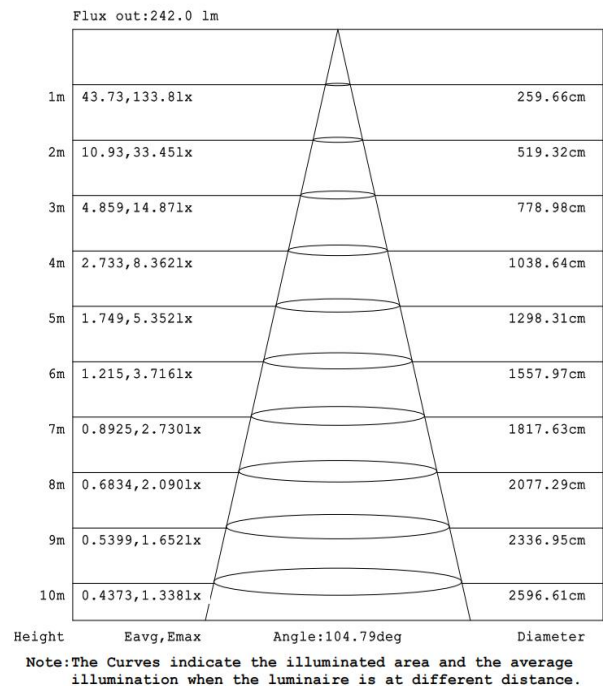
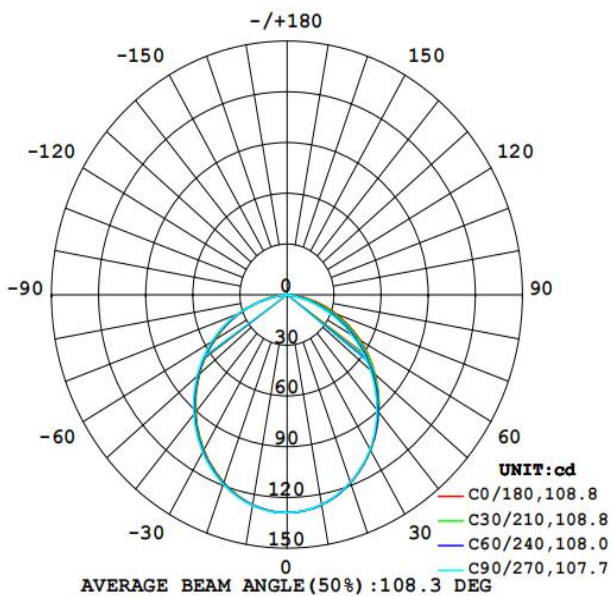
- Warranty 2 years
- Efficient and durable
- Easy and quick installation
- PC housing and transparent mask material, not easy to deform and change color

Electrical Data

Nominal wattage (W)	5W
Nominal Voltage (V)	220-240V
Mains Frequency (Hz)	50
Nominal Current (mA)	39
Power Factor λ	0.5
Operating mode	DOB

Photometrical data

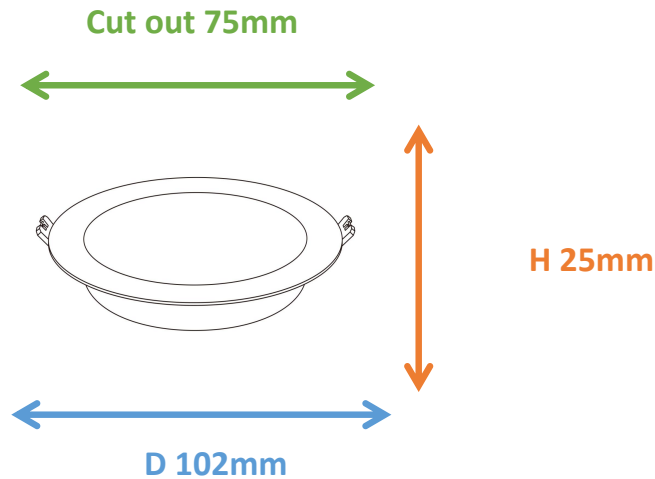
Luminous flux $\pm 10\%$ (lm)	344 lm
Luminous efficacy	73 lm/w
Color temperature	6000K
Light color (designation)	Cold White
Color rendering index Ra	≥ 80
Standard deviation of color matching	≤ 5 SDCM
Luminous intensity/cd	129
Flickering	Flicker free
Beam angle	108 °



6000K

Dimensions & Weight

Diameter (mm)	102
Height (mm)	25
Product weight (g)	55



Material & Colors

Product color	All White
Housing color	White
Body material	PC
Cover material	PC
Mercury content	0.0 mg

Application & Mounting

Ambient temperature range	-10°C~+40 °C
Temperature range at storage	-10°C~+40 °C
Type of connection	Screwless terminal
Type of protection	IP20
Dimmable	No
Mounting type	Recessed mounted
Mounting location	Ceiling
Application environment	Indoor
Cut size (mm)	75
LED module replaceable	Not replaceable
With light source	Yes

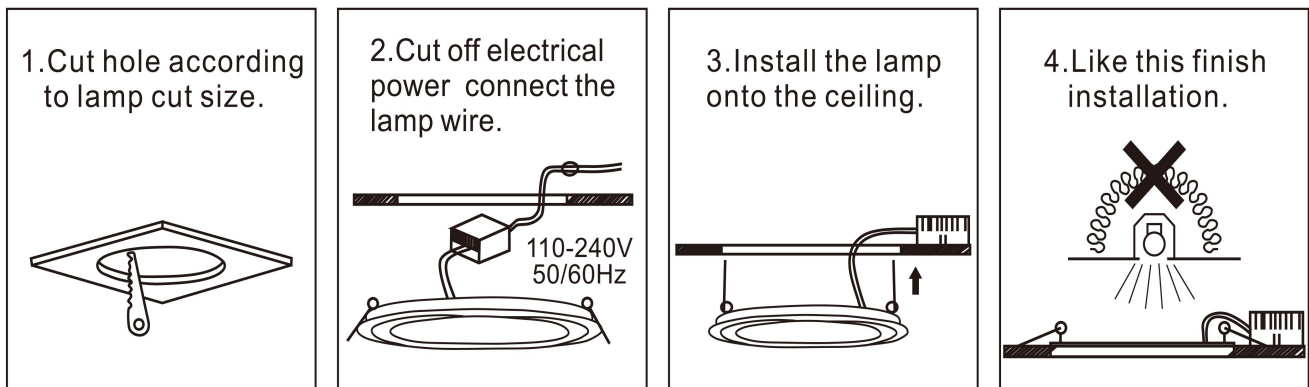
Certificates & Lifespan

Life (h)	20,000
Certificates	CB LVD EMC RoHS
Standards	ISO9001:2015

Logistical Data

Product code	Dimensions (L*W*H)	Pcs/ carton	G.W. kg	Volume CBM
HYD-P7-5W	57*35*42.5 cm	150	...	0.08479

Installation Method



Disclaimer

Subject to change without notice. Errors and omission excepted. Always make sure to use the most recent release