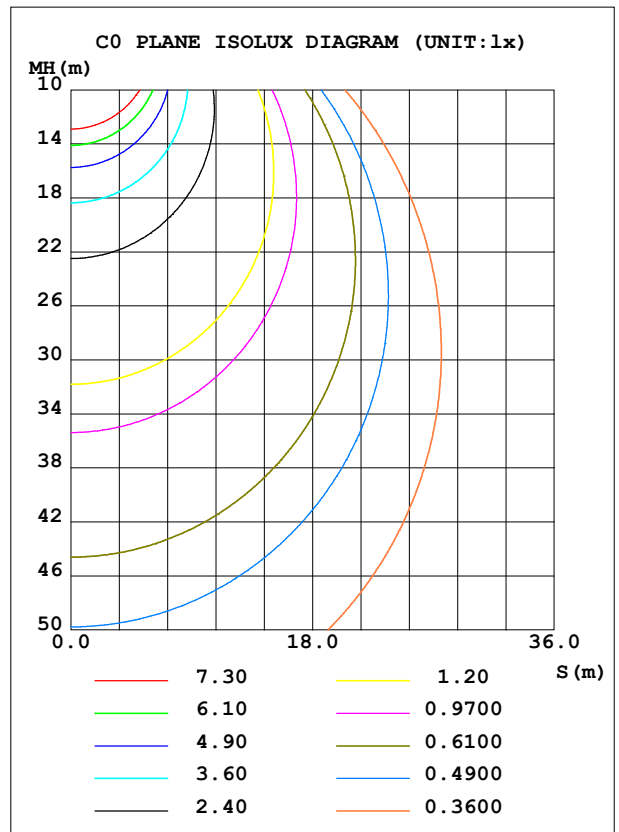
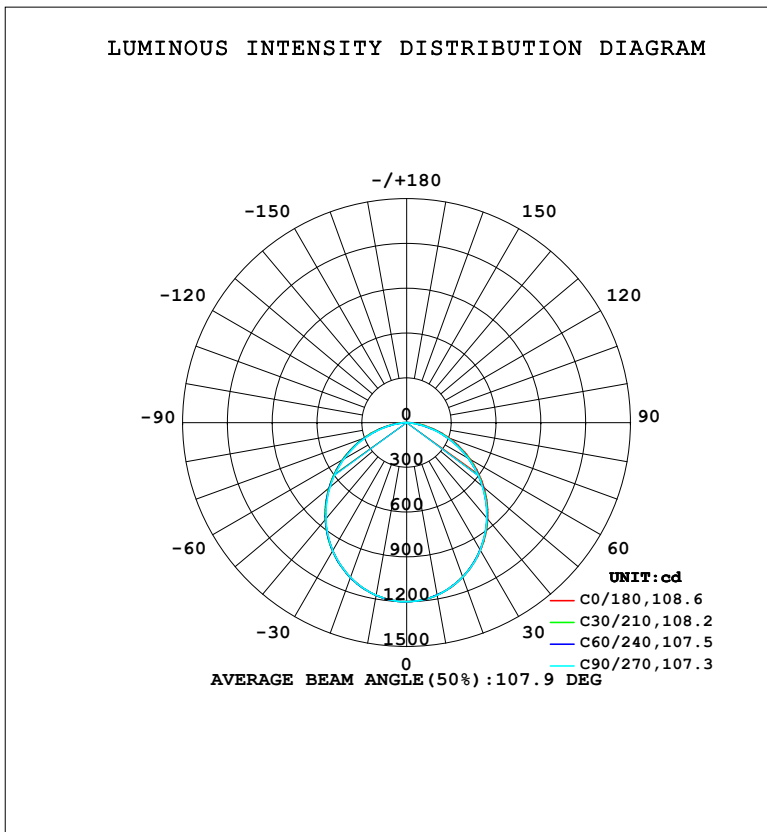


LUMINAIRE PHOTOMETRIC TEST REPORT

Test:U:220.35V I:0.1422A P:29.718W PF:0.9486 Freq:50.00Hz Lamp Flux:3241.48x1 lm		
NAME:	TYPE:	WEIGHT:
SPEC.:	DIM.:	SERIAL No.:
MFR.: EVERFINE	SUR.:	Shielding Angle:

DATA OF LAMP		PHOTOMETRIC DATA			
MODEL	116E	Imax (cd)	1199	S/MH (C0/180)	1.23
NOMINAL POWER (W)	30	LOR (%)	100.0	S/MH (C90/270)	1.23
RATED VOLTAGE (V)	220	TOTAL FLUX (lm)	3241.5	η UP, DN (C0-180)	0.0,49.8
NOMINAL FLUX (lm)	3241.48	CIE CLASS	DIRECT	η UP, DN (C180-360)	0.0,50.2
LAMPS INSIDE	1	η up (%)	0.0	CIBSE SHR NOM	1.25
TEST VOLTAGE (V)	219.5	η down (%)	100.0	CIBSE SHR MAX	1.35



C Range: 0 - 360DEG
 C Interval: 15.0DEG
 Test Speed: HIGH
 Temperature: 25.3°C
 Operators: DAMIN
 Test Date: 2024-01-07

γ Range: 0 - 90DEG
 γ Interval: 1.0DEG
 Test System: EVERFINE GO-2000B_V1 SYSTEM V2.00.473
 Humidity: 65.0%
 Test Distance: 9.401m [K=1.0000]
 Remarks:

ZONAL FLUX DIAGRAM

ZONAL FLUX DIAGRAM:

γ	C0	C45	C90	C135	C180	C225	C270	C315	γ	Φ zone	Φ total	%lum,lamp
10	1174	1173	1173	1174	1174	1175	1175	1175	0- 10	113.3	113.3	3.49,3.49
20	1101	1100	1100	1101	1102	1103	1103	1103	10- 20	322.5	435.7	13.4,13.4
30	988.8	987.6	986.0	988.2	990.4	991.0	990.3	990.8	20- 30	483.7	919.4	28.4,28.4
40	844.6	840.6	836.5	841.8	846.8	845.6	842.7	845.4	30- 40	575.2	1495	46.1,46.1
50	675.6	668.6	662.8	670.5	678.2	675.0	670.8	675.3	40- 50	586.1	2081	64.2,64.2
60	492.2	481.6	475.1	483.7	494.0	488.6	483.4	488.9	50- 60	518.5	2599	80.2,80.2
70	302.1	290.7	281.3	293.5	305.4	297.6	291.6	298.1	60- 70	386.3	2985	92.1,92.1
80	122.4	107.2	96.59	110.2	123.9	114.8	105.2	115.3	70- 80	213.1	3199	98.7,98.7
90	1.749	1.753	1.660	1.707	1.999	1.958	1.901	2.003	80- 90	42.89	3241	100,100
100									90-100			
110									100-110			
120									110-120			
130									120-130			
140									130-140			
150									140-150			
160									150-160			
170									160-170			
180									170-180			
DEG	LUMINOUS INTENSITY:cd									UNIT:lm		

Conical surface Flux(90deg): 1791.4 lm

%lum = 55.3%

%lamp = 55.3%

Conical surface Flux(130deg): 2812.1 lm

%lum = 86.8%

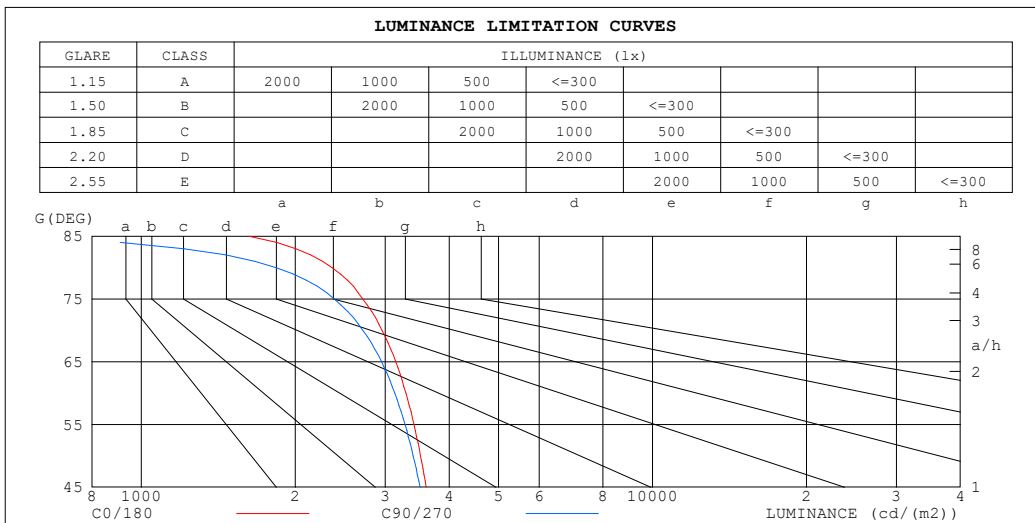
%lamp = 86.8%

C Range: 0 - 360DEG
 C Interval: 15.0DEG
 Test Speed: HIGH
 Temperature:25.3°C
 Operators:DAMIN
 Test Date:2024-01-07

γ Range: 0 - 90DEG
 γ Interval: 1.0DEG
 Test System:EVERFINE GO-2000B_V1 SYSTEM V2.00.473
 Humidity:65.0%
 Test Distance:9.401m [K=1.0000]
 Remarks:

LUMINANCE LIMITATION CURVES

Test:U:220.35V I:0.1422A P:29.718W PF:0.9486 Freq:50.00Hz Lamp Flux:3241.48x1 lm		
NAME:	TYPE:	WEIGHT:
SPEC.:	DIM.:	SERIAL No.:
MFR.: EVERFINE	SUR.:	Shielding Angle:



LUMINANCE cd/(m2)		
G (DEG)	C0/180	C90/270
85	1624	578
80	2359	1835
75	2712	2386
70	2956	2713
65	3145	2950
60	3294	3134
55	3413	3278
50	3517	3401
45	3608	3509

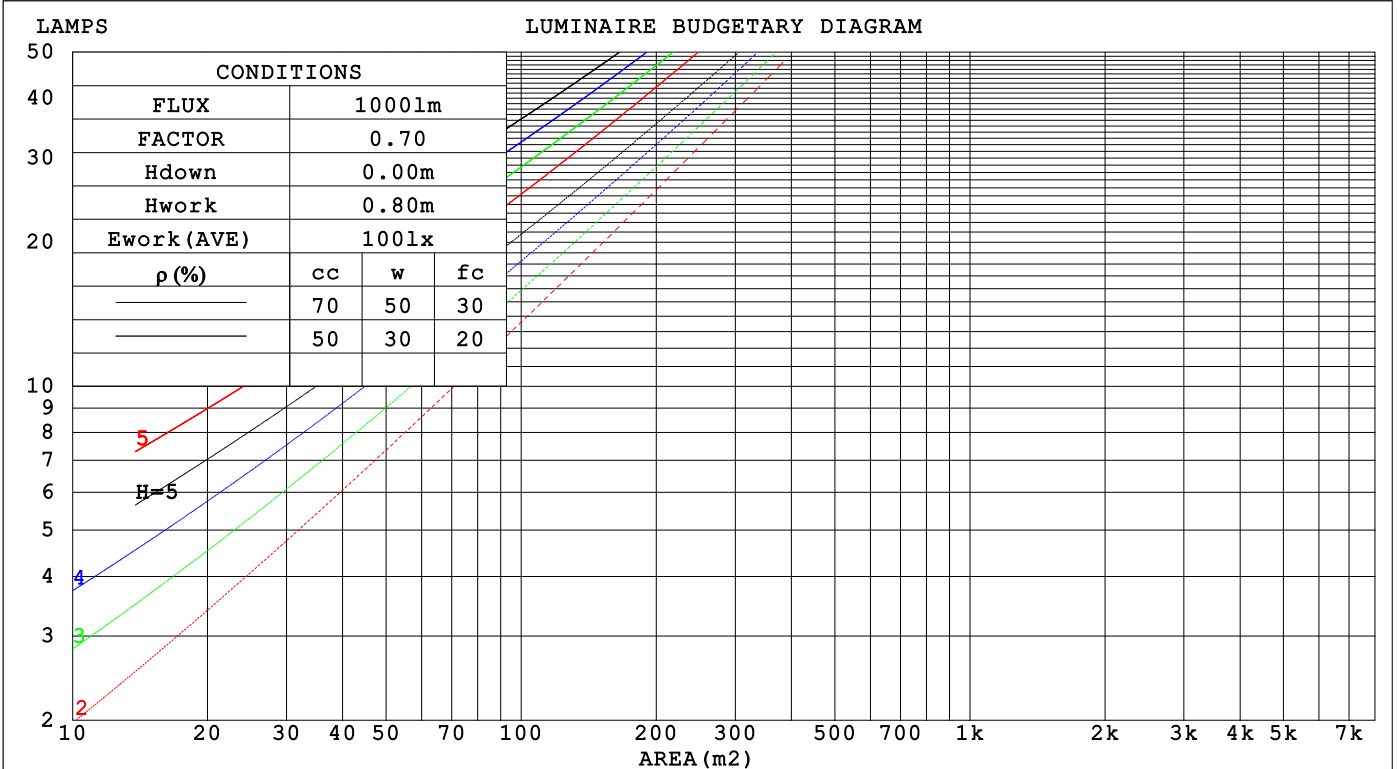
C Range: 0 - 360DEG
 C Interval: 15.0DEG
 Test Speed: HIGH
 Temperature:25.3°C
 Operators:DAMIN
 Test Date:2024-01-07

γ Range: 0 - 90DEG
 γ Interval: 1.0DEG
 Test System:EVERFINE GO-2000B_V1 SYSTEM V2.00.473
 Humidity:65.0%
 Test Distance:9.401m [K=1.0000]
 Remarks:

CU AND LUMINAIRE BUDGETARY ESTIMATE DIAGRAM

Test:U:220.35V I:0.1422A P:29.718W PF:0.9486 Freq:50.00Hz Lamp Flux:3241.48x1 lm		
NAME:	TYPE:	WEIGHT:
SPEC.:	DIM.:	SERIAL No.:
MFR.: EVERFINE	SUR.:	Shielding Angle:

ρcc	80%			70%			50%			30%			10%			0
ρw	50%	30%	10%	50%	30%	10%	50%	30%	10%	50%	30%	10%	50%	30%	10%	0
ρfc	20%			20%			20%			20%			20%			0
RCR	RCR:Room Cavity Ratio Coefficients of Utilization(CU)															
0.0	1.19	1.19	1.19	1.16	1.16	1.16	1.11	1.11	1.11	1.06	1.06	1.06	1.02	1.02	1.02	1.00
1.0	1.04	1.00	.96	1.02	.98	.95	.98	.95	.92	.94	.91	.89	.90	.88	.86	.84
2.0	.91	.84	.79	.89	.83	.78	.86	.81	.76	.82	.78	.74	.79	.76	.73	.70
3.0	.80	.72	.66	.79	.71	.65	.76	.69	.64	.73	.67	.63	.70	.66	.62	.60
4.0	.71	.62	.56	.70	.62	.55	.67	.60	.55	.65	.59	.54	.63	.57	.53	.51
5.0	.64	.55	.48	.62	.54	.48	.60	.53	.47	.58	.52	.47	.56	.51	.46	.44
6.0	.57	.48	.42	.56	.48	.42	.54	.47	.41	.53	.46	.41	.51	.45	.41	.39
7.0	.52	.43	.37	.51	.43	.37	.50	.42	.37	.48	.41	.36	.47	.41	.36	.34
8.0	.47	.39	.33	.47	.39	.33	.45	.38	.33	.44	.37	.33	.43	.37	.32	.31
9.0	.44	.35	.30	.43	.35	.30	.42	.35	.30	.41	.34	.29	.40	.34	.29	.27
10.0	.40	.32	.27	.40	.32	.27	.39	.32	.27	.38	.31	.27	.37	.31	.27	.25



C Range: 0 - 360DEG
 C Interval: 15.0DEG
 Test Speed: HIGH
 Temperature:25.3°C
 Operators:DAMIN
 Test Date:2024-01-07

γ Range: 0 - 90DEG
 γ Interval: 1.0DEG
 Test System:EVERFINE GO-2000B_V1 SYSTEM V2.00.473
 Humidity:65.0%
 Test Distance:9.401m [K=1.0000]
 Remarks:

WEC AND CCEC

Test:U:220.35V I:0.1422A P:29.718W PF:0.9486 Freq:50.00Hz								
Lamp Flux:3241.48x1 lm								
NAME:			TYPE:			WEIGHT:		
SPEC.:			DIM.:			SERIAL No.:		
MFR.: EVERFINE			SUR.:			Shielding Angle:		

ρ_{CC}	80%			70%			50%			30%			10%			0
ρ_w	50%	30%	10%	50%	30%	10%	50%	30%	10%	50%	30%	10%	50%	30%	10%	0
ρ_{fc}	20%			20%			20%			20%			20%			0
RCR	RCR:Room Cavity Ratio						Wall Exitance Coefficients (WEC)									
0.0																
1.0	.300	.171	.054	.293	.167	.053	.280	.160	.051	.268	.154	.050	.256	.149	.048	
2.0	.285	.156	.048	.279	.154	.047	.267	.149	.046	.256	.144	.045	.247	.139	.044	
3.0	.265	.141	.042	.260	.139	.042	.249	.135	.041	.240	.131	.040	.231	.128	.040	
4.0	.245	.127	.037	.240	.126	.037	.231	.123	.037	.223	.120	.036	.215	.117	.036	
5.0	.227	.116	.034	.223	.114	.033	.215	.112	.033	.207	.109	.033	.200	.107	.032	
6.0	.211	.106	.030	.207	.105	.030	.200	.103	.030	.193	.100	.030	.187	.098	.029	
7.0	.197	.097	.028	.193	.096	.027	.187	.094	.027	.181	.093	.027	.175	.091	.027	
8.0	.184	.090	.025	.181	.089	.025	.175	.087	.025	.170	.086	.025	.165	.085	.025	
9.0	.173	.083	.023	.170	.083	.023	.165	.081	.023	.160	.080	.023	.155	.079	.023	
10.0	.162	.078	.022	.160	.077	.022	.155	.076	.021	.151	.075	.021	.147	.074	.021	

ρ_{CC}	80%			70%			50%			30%			10%			0
ρ_w	50%	30%	10%	50%	30%	10%	50%	30%	10%	50%	30%	10%	50%	30%	10%	0
ρ_{fc}	20%			20%			20%			20%			20%			0
RCR	RCR:Room Cavity Ratio						Ceiling Cavity Exitance Coefficients (CCEC)									
0.0	.190	.190	.190	.163	.163	.163	.111	.111	.111	.064	.064	.064	.020	.020	.020	
1.0	.180	.156	.135	.154	.134	.116	.105	.092	.080	.061	.053	.047	.019	.017	.015	
2.0	.171	.132	.099	.147	.114	.085	.101	.079	.060	.058	.046	.035	.019	.015	.011	
3.0	.164	.114	.075	.140	.099	.065	.096	.068	.046	.056	.040	.027	.018	.013	.009	
4.0	.156	.101	.059	.134	.087	.051	.092	.061	.036	.053	.036	.021	.017	.012	.007	
5.0	.149	.090	.048	.128	.078	.041	.088	.055	.029	.051	.032	.017	.016	.010	.006	
6.0	.141	.082	.040	.122	.071	.034	.084	.050	.024	.049	.029	.014	.016	.010	.005	
7.0	.135	.075	.033	.116	.065	.029	.080	.046	.021	.046	.027	.012	.015	.009	.004	
8.0	.128	.069	.029	.110	.060	.025	.076	.042	.018	.044	.025	.011	.014	.008	.004	
9.0	.122	.064	.025	.105	.056	.022	.073	.039	.016	.042	.023	.009	.014	.008	.003	
10.0	.117	.060	.023	.100	.052	.020	.070	.037	.014	.041	.022	.008	.013	.007	.003	

C Range: 0 - 360DEG
 C Interval: 15.0DEG
 Test Speed: HIGH
 Temperature:25.3°C
 Operators:DAMIN
 Test Date:2024-01-07

γ Range: 0 - 90DEG
 γ Interval: 1.0DEG
 Test System:EVERFINE GO-2000B_V1 SYSTEM V2.00.473
 Humidity:65.0%
 Test Distance:9.401m [K=1.0000]
 Remarks:

UGR(Unified Glare Rating) Table

Test:U:220.35V I:0.1422A P:29.718W PF:0.9486 Freq:50.00Hz										
Lamp Flux:3241.48x1 lm										
NAME:			TYPE:			WEIGHT:				
SPEC.:			DIM.:			SERIAL No.:				
MFR.: EVERFINE			SUR.:			Shielding Angle:				
ceiling/cavity	0.7	0.7	0.5	0.5	0.3	0.7	0.7	0.5	0.5	0.3
walls	0.5	0.3	0.5	0.3	0.3	0.5	0.3	0.5	0.3	0.3
working plane	0.2	0.2	0.2	0.2	0.2	0.2	0.2	0.2	0.2	0.2
Room dimensions	Viewed crosswise					Viewed endwise				
x = 2H y = 2H	13.0	14.5	13.3	14.7	14.9	12.8	14.3	13.1	14.5	14.7
3H	14.5	15.9	14.8	16.1	16.4	14.2	15.6	14.5	15.8	16.1
4H	15.1	16.4	15.4	16.7	16.9	14.7	16.0	15.0	16.3	16.5
6H	15.5	16.7	15.8	17.0	17.3	15.0	16.2	15.3	16.5	16.8
8H	15.6	16.8	15.9	17.1	17.4	15.0	16.2	15.4	16.5	16.8
12H	15.6	16.8	16.0	17.1	17.4	15.0	16.2	15.4	16.5	16.8
4H 2H	13.6	14.9	13.9	15.1	15.4	13.4	14.7	13.7	15.0	15.2
3H	15.2	16.4	15.6	16.7	17.0	15.0	16.1	15.3	16.4	16.7
4H	15.9	17.0	16.3	17.3	17.6	15.6	16.6	16.0	17.0	17.3
6H	16.5	17.4	16.9	17.7	18.1	16.0	16.9	16.4	17.3	17.6
8H	16.6	17.5	17.0	17.8	18.2	16.1	16.9	16.5	17.3	17.7
12H	16.7	17.5	17.1	17.9	18.3	16.0	16.8	16.5	17.2	17.6
8H 4H	16.1	17.0	16.6	17.4	17.8	15.8	16.7	16.2	17.1	17.5
6H	16.8	17.5	17.2	17.9	18.3	16.3	17.1	16.8	17.5	17.9
8H	17.0	17.6	17.5	18.1	18.5	16.5	17.1	16.9	17.5	18.0
12H	17.1	17.7	17.6	18.1	18.6	16.5	17.0	16.9	17.5	17.9
12H 4H	16.1	16.9	16.6	17.3	17.7	15.8	16.6	16.3	17.0	17.4
6H	16.8	17.4	17.3	17.9	18.3	16.4	17.0	16.8	17.4	17.9
8H	17.0	17.6	17.5	18.0	18.5	16.5	17.1	17.0	17.5	18.0
Variations with the observer position at spacings(CIE Pub.117):										
S = 1.0H	+ 0.2 / - 0.2					+ 0.2 / - 0.2				
1.5H	+ 0.2 / - 0.3					+ 0.2 / - 0.3				
2.0H	+ 0.2 / - 0.2					+ 0.2 / - 0.3				

CIE Pub.117, 3241 lm Total Lamp Luminous Flux Correct (8log(F/F0) = 4.1)
 Area: 0.3025 m2

C Range: 0 - 360DEG
 C Interval: 15.0DEG
 Test Speed: HIGH
 Temperature:25.3°C
 Operators:DAMIN
 Test Date:2024-01-07

γ Range: 0 - 90DEG
 γ Interval: 1.0DEG
 Test System:EVERFINE GO-2000B_V1 SYSTEM V2.00.473
 Humidity:65.0%
 Test Distance:9.401m [K=1.0000]
 Remarks:

UTILIZATION FACTORS TABLE

Test:U:220.35V I:0.1422A P:29.718W PF:0.9486 Freq:50.00Hz Lamp Flux:3241.48x1 lm		
NAME:	TYPE:	WEIGHT:
SPEC.:	DIM.:	SERIAL No.:
MFR.: EVERFINE	SUR.:	Shielding Angle:

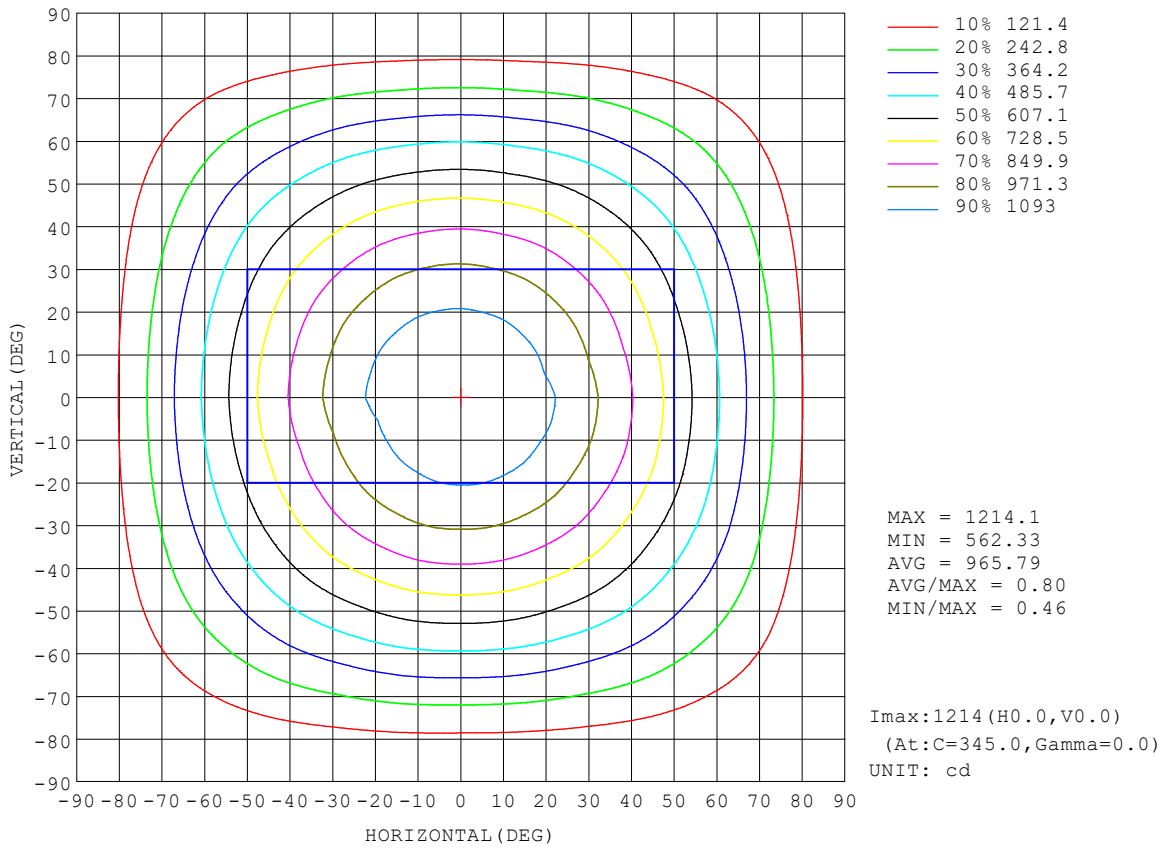
REFLECTANCE										
Ceiling	0.8	0.8	0.8	0.7	0.7	0.7	0.5	0.5	0.5	0
Walls	0.7	0.5	0.3	0.7	0.5	0.3	0.7	0.5	0.3	0
Working plane	0.2	0.2	0.2	0.2	0.2	0.2	0.2	0.2	0.2	0
ROOM INDEX	UTILIZATION FACTORS (PERCENT) $k(RI) \times RCR = 5$									
k = 0.60	58	47	40	58	47	40	56	46	40	33
0.80	68	57	50	67	57	50	66	56	49	42
1.00	77	66	59	76	65	58	73	67	58	51
1.25	84	74	67	82	73	66	80	71	65	58
1.50	89	79	72	87	78	72	84	77	71	63
2.00	96	87	81	94	86	80	90	84	79	71
2.50	99	92	86	97	91	85	94	88	83	75
3.00	103	96	91	101	95	90	97	92	87	79
4.00	107	101	97	104	99	95	100	96	93	84
5.00	109	104	100	107	102	99	102	99	96	87
ROOM INDEX	UF(total)									Direct
According to DIN EN 13032-2 2004			Suspended				SHRNOM = 1.25			

C Range: 0 - 360DEG
 C Interval: 15.0DEG
 Test Speed: HIGH
 Temperature:25.3°C
 Operators:DAMIN
 Test Date:2024-01-07

γ Range: 0 - 90DEG
 γ Interval: 1.0DEG
 Test System:EVERFINE GO-2000B_V1 SYSTEM V2.00.473
 Humidity:65.0%
 Test Distance:9.401m [K=1.0000]
 Remarks:

ISOCANDELA DIAGRAM

Test:U:220.35V I:0.1422A P:29.718W PF:0.9486 Freq:50.00Hz Lamp Flux:3241.48x1 lm		
NAME:	TYPE:	WEIGHT:
SPEC.:	DIM.:	SERIAL No.:
MFR.: EVERFINE	SUR.:	Shielding Angle:

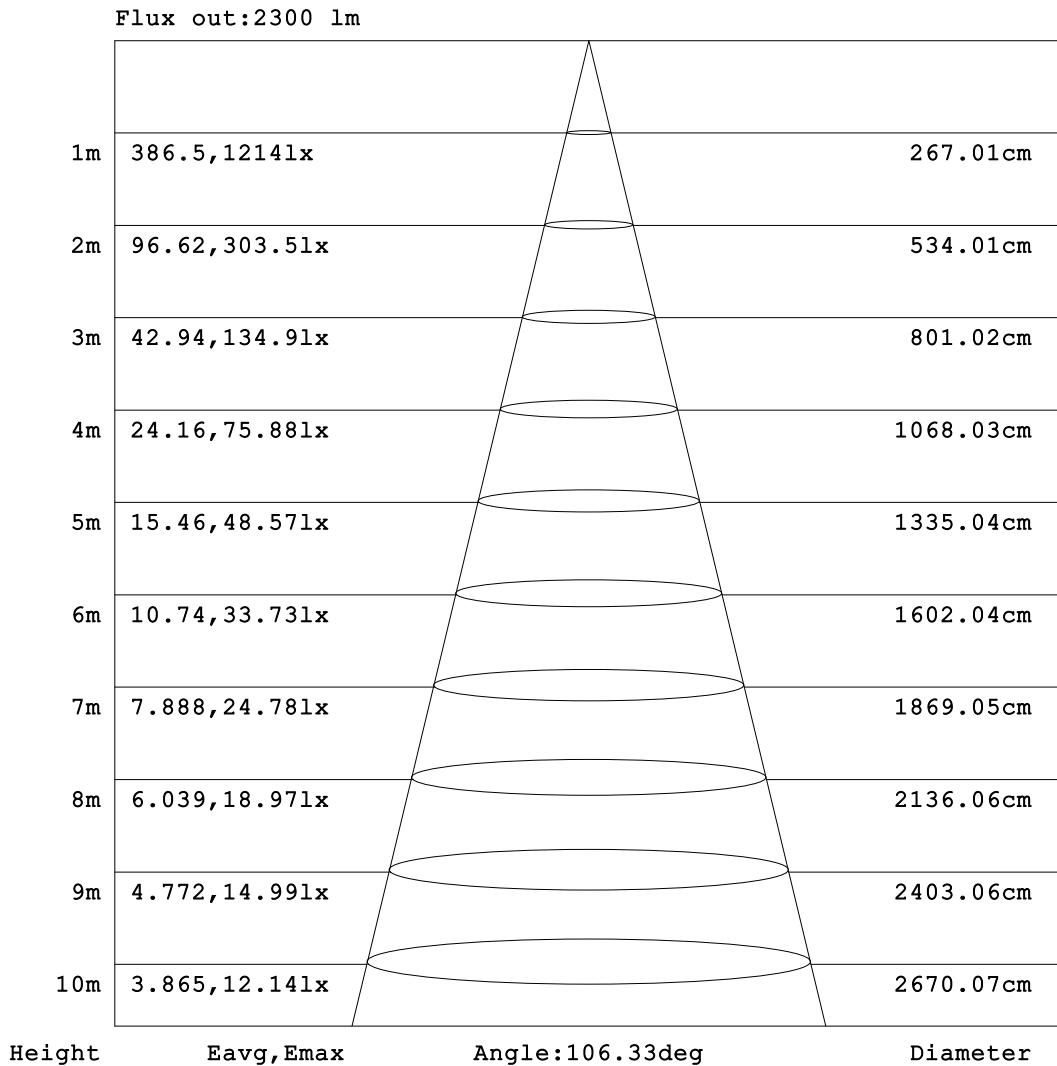


C Range: 0 - 360DEG
 C Interval: 15.0DEG
 Test Speed: HIGH
 Temperature:25.3°C
 Operators:DAMIN
 Test Date:2024-01-07

γ Range: 0 - 90DEG
 γ Interval: 1.0DEG
 Test System:EVERFINE GO-2000B_V1 SYSTEM V2.00.473
 Humidity:65.0%
 Test Distance:9.401m [K=1.0000]
 Remarks:

AAI Figure

Test:U:220.35V I:0.1422A P:29.718W PF:0.9486 Freq:50.00Hz Lamp Flux:3241.48x1 lm		
NAME:	TYPE:	WEIGHT:
SPEC.:	DIM.:	SERIAL No.:
MFR.: EVERFINE	SUR.:	Shielding Angle:



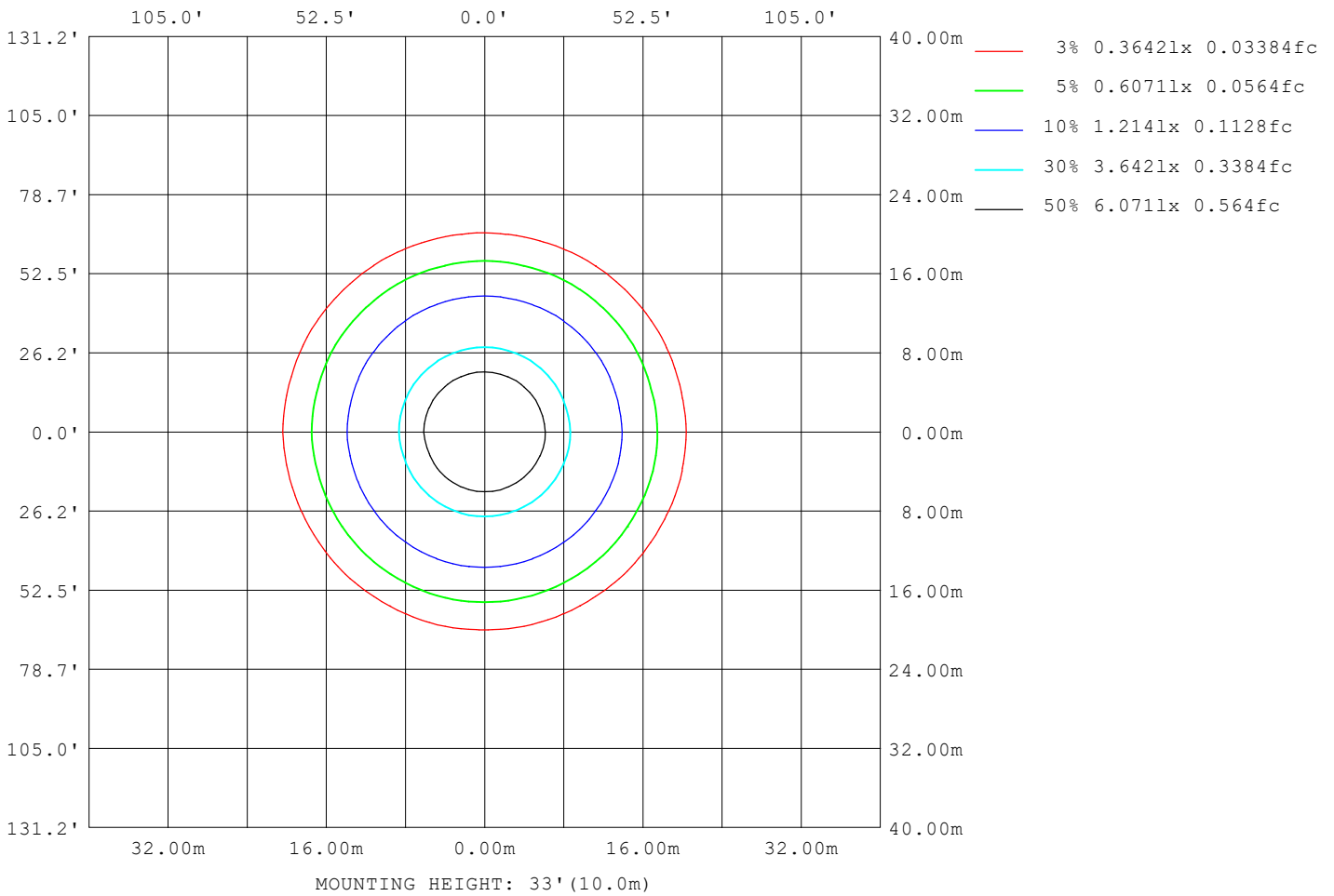
Note:The Curves indicate the illuminated area and the average illumination when the luminaire is at different distance.

C Range: 0 - 360DEG
C Interval: 15.0DEG
Test Speed: HIGH
Temperature:25.3°C
Operators:DAMIN
Test Date:2024-01-07

γ Range: 0 - 90DEG
γ Interval: 1.0DEG
Test System:EVERFINE GO-2000B_V1 SYSTEM V2.00.473
Humidity:65.0%
Test Distance:9.401m [K=1.0000]
Remarks:

ISOLUX DIAGRAM

Test:U:220.35V I:0.1422A P:29.718W PF:0.9486 Freq:50.00Hz Lamp Flux:3241.48x1 lm		
NAME:	TYPE:	WEIGHT:
SPEC.:	DIM.:	SERIAL No.:
MFR.: EVERFINE	SUR.:	Shielding Angle:



C Range: 0 - 360DEG
 C Interval: 15.0DEG
 Test Speed: HIGH
 Temperature:25.3°C
 Operators:DAMIN
 Test Date:2024-01-07

γ Range: 0 - 90DEG
 γ Interval: 1.0DEG
 Test System:EVERFINE GO-2000B_V1 SYSTEM V2.00.473
 Humidity:65.0%
 Test Distance:9.401m [K=1.0000]
 Remarks:

LED Avg.L Report

Test:U:220.35V I:0.1422A P:29.718W PF:0.9486 Freq:50.00Hz Lamp Flux:3241.48x1 lm		
NAME:	TYPE:	WEIGHT:
SPEC.:	DIM.:	SERIAL No.:
MFR.: EVERFINE	SUR.:	Shielding Angle:

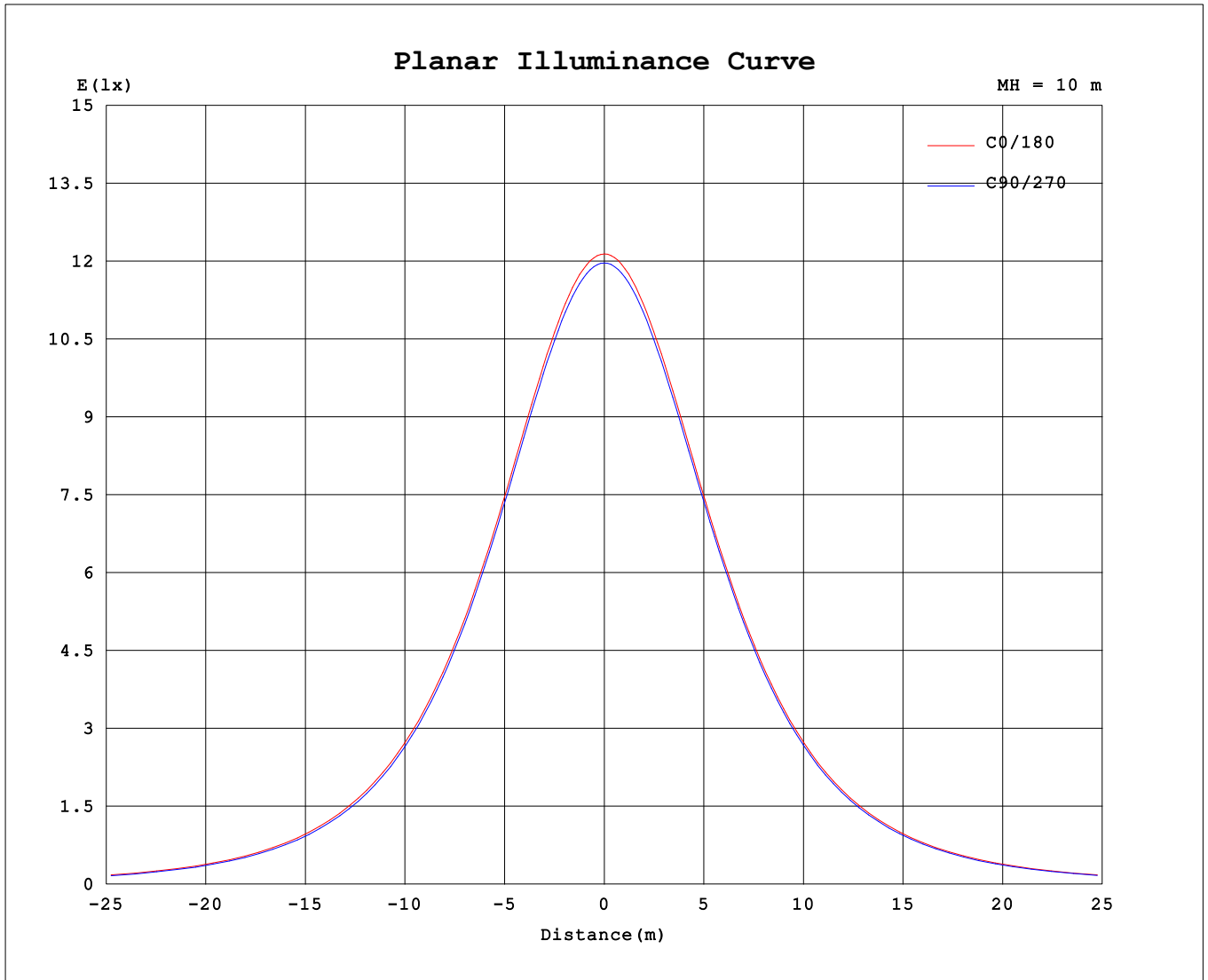
AvgL	cd/m2
L_0~180 (65) av	3115
L_0~180 (75) av	2696
L_0~180 (85) av	1633
L_90~270 (65) av	2993
L_90~270 (75) av	2452
L_90~270 (85) av	697
L_45 (65) av	3051
L_45 (75) av	2570
L_45 (85) av	1088

Standard: GB/T 29293-2012

C Range: 0 - 360DEG
 C Interval: 15.0DEG
 Test Speed: HIGH
 Temperature:25.3°C
 Operators:DAMIN
 Test Date:2024-01-07

γ Range: 0 - 90DEG
 γ Interval: 1.0DEG
 Test System:EVERFINE GO-2000B_V1 SYSTEM V2.00.473
 Humidity:65.0%
 Test Distance:9.401m [K=1.0000]
 Remarks:

Planar Illuminance Curve



C Range: 0 - 360DEG
 C Interval: 15.0DEG
 Test Speed: HIGH
 Temperature: 25.3°C
 Operators: DAMIN
 Test Date: 2024-01-07

γ Range: 0 - 90DEG
 γ Interval: 1.0DEG
 Test System: EVERFINE GO-2000B_V1 SYSTEM V2.00.473
 Humidity: 65.0%
 Test Distance: 9.401m [K=1.0000]
 Remarks:

