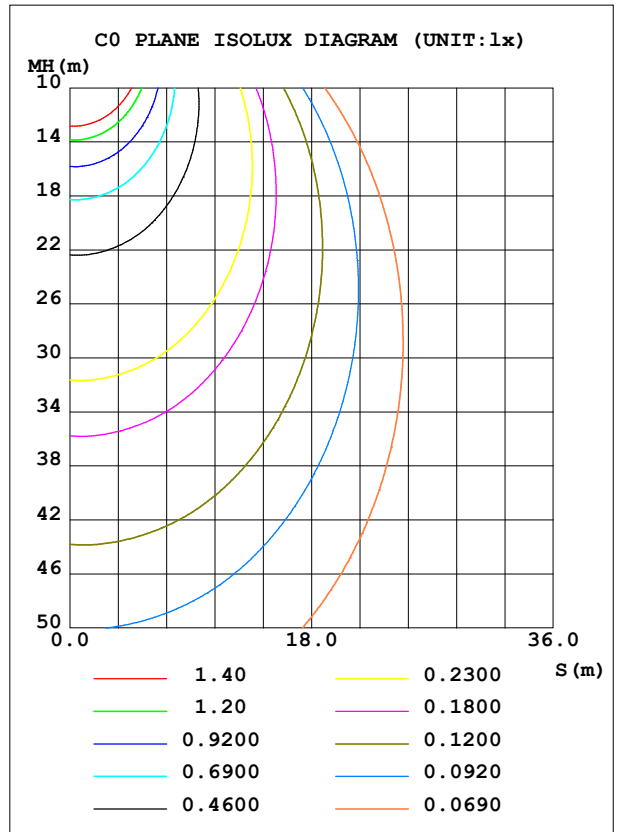
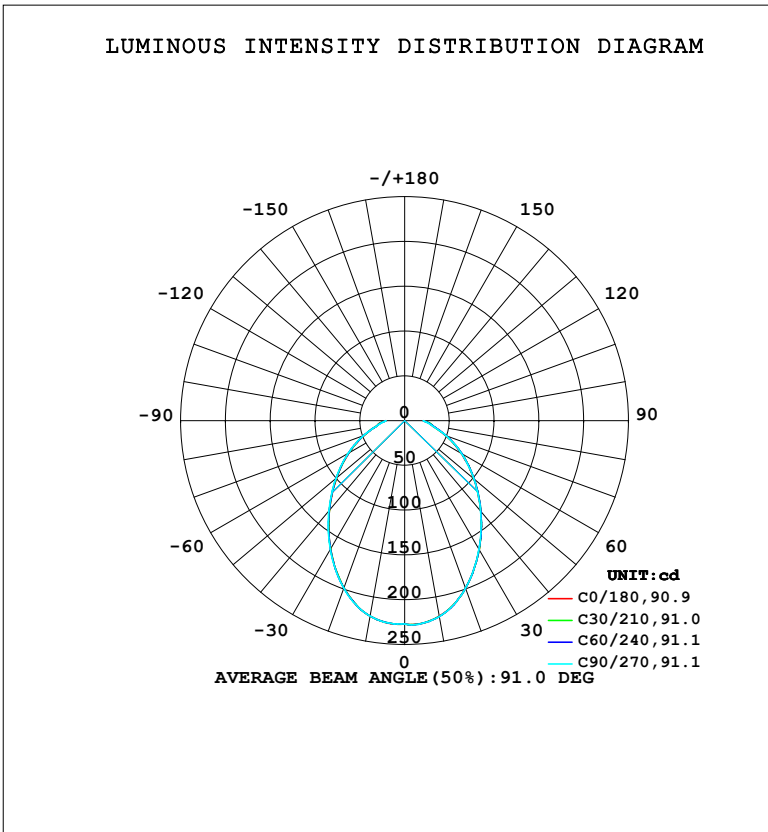


LUMINAIRE PHOTOMETRIC TEST REPORT

Test:U:220.35V I:0.0745A P:9.5198W PF:0.5796 Freq:50.00Hz Lamp Flux:554.435x1 lm		
NAME:	TYPE: 筒灯	WEIGHT:
SPEC.:	DIM.:	SERIAL No.:
MFR.: EVERFINE	SUR.: 80mm	Shielding Angle:

DATA OF LAMP		PHOTOMETRIC DATA				Eff: 58.24 lm/W
MODEL	226E	I <sub>max</sub> (cd)	228.2	S/MH (C0/180)	1.11	
NOMINAL POWER (W)	10	LOR (%)	100.0	S/MH (C90/270)	1.11	
RATED VOLTAGE (V)	220	TOTAL FLUX (lm)	554.43	η UP, DN (C0-180)	0.0, 50.1	
NOMINAL FLUX (lm)	554.435	CIE CLASS	DIRECT	η UP, DN (C180-360)	0.0, 49.9	
LAMPS INSIDE	1	η up (%)	0.0	CIBSE SHR NOM	1.25	
TEST VOLTAGE (V)	219.5	η down (%)	100.0	CIBSE SHR MAX	1.25	



C Range: 0 - 360DEG  
 C Interval: 15.0DEG  
 Test Speed: HIGH  
 Temperature: 25.3°C  
 Operators: DAMIN  
 Test Date: 2023-12-14

γ Range: 0 - 90DEG  
 γ Interval: 1.0DEG  
 Test System: EVERFINE GO-2000B\_V1 SYSTEM V2.00.473  
 Humidity: 65.0%  
 Test Distance: 9.401m [K=1.0000]  
 Remarks:

ZONAL FLUX DIAGRAM

ZONAL FLUX DIAGRAM:

$\gamma$	C0	C45	C90	C135	C180	C225	C270	C315	$\gamma$	$\Phi$ zone	$\Phi$ total	%lum, lamp
10	221.8	222.4	222.2	222.2	221.8	221.6	221.7	221.7	0- 10	21.50	21.50	3.88,3.88
20	199.0	199.5	198.9	199.1	198.7	198.4	199.0	198.9	10- 20	59.68	81.18	14.6,14.6
30	166.4	167.1	166.0	166.2	165.5	165.1	166.2	166.4	20- 30	84.20	165.4	29.8,29.8
40	132.4	133.1	132.0	131.7	130.9	130.7	131.8	132.3	30- 40	93.08	258.5	46.6,46.6
50	100.7	101.8	100.8	100.2	99.23	99.34	100.2	100.5	40- 50	89.32	347.8	62.7,62.7
60	72.91	74.02	73.37	72.60	71.78	72.03	72.66	72.77	50- 60	77.16	424.9	76.6,76.6
70	48.66	49.93	49.18	48.95	48.14	48.41	48.72	48.72	60- 70	59.92	484.9	87.4,87.4
80	30.86	31.84	30.96	31.53	31.18	31.16	30.73	31.06	70- 80	41.21	526.1	94.9,94.9
90	20.81	21.06	21.06	21.04	21.07	14.61	21.04	20.88	80- 90	28.38	554.4	100,100
100									90-100			
110									100-110			
120									110-120			
130									120-130			
140									130-140			
150									140-150			
160									150-160			
170									160-170			
180									170-180			
DEG	LUMINOUS INTENSITY:cd									UNIT:lm		

Conical surface Flux(90deg): 304.2 lm

%lum = 54.9%

%lamp = 54.9%

Conical surface Flux(130deg): 457.25 lm

%lum = 82.5%

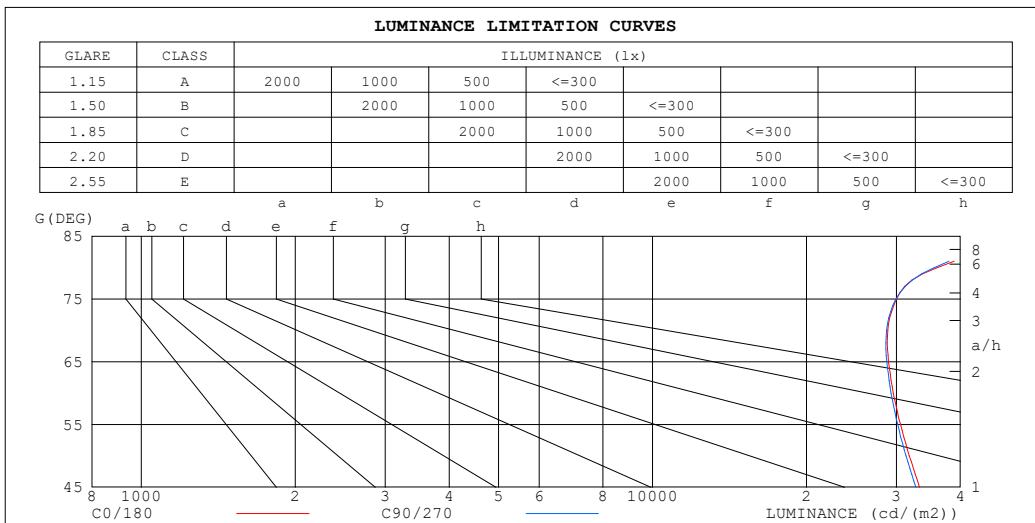
%lamp = 82.5%

C Range: 0 - 360DEG  
 C Interval: 15.0DEG  
 Test Speed: HIGH  
 Temperature:25.3°C  
 Operators:DAMIN  
 Test Date:2023-12-14

$\gamma$  Range: 0 - 90DEG  
 $\gamma$  Interval: 1.0DEG  
 Test System:EVERFINE GO-2000B\_V1 SYSTEM V2.00.473  
 Humidity:65.0%  
 Test Distance:9.401m [K=1.0000]  
 Remarks:

**LUMINANCE LIMITATION CURVES**

Test:U:220.35V I:0.0745A P:9.5198W PF:0.5796 Freq:50.00Hz Lamp Flux:554.435x1 lm		
NAME:	TYPE: 筒灯	WEIGHT:
SPEC.:	DIM.:	SERIAL No.:
MFR.: EVERFINE	SUR.: 80mm	Shielding Angle:



LUMINANCE cd/(m2)		
G (DEG)	C0/180	C90/270
85	62150	57651
80	36054	35585
75	29994	29923
70	28859	28700
65	28946	28723
60	29578	29289
55	30563	30174
50	31793	31317
45	33304	32737

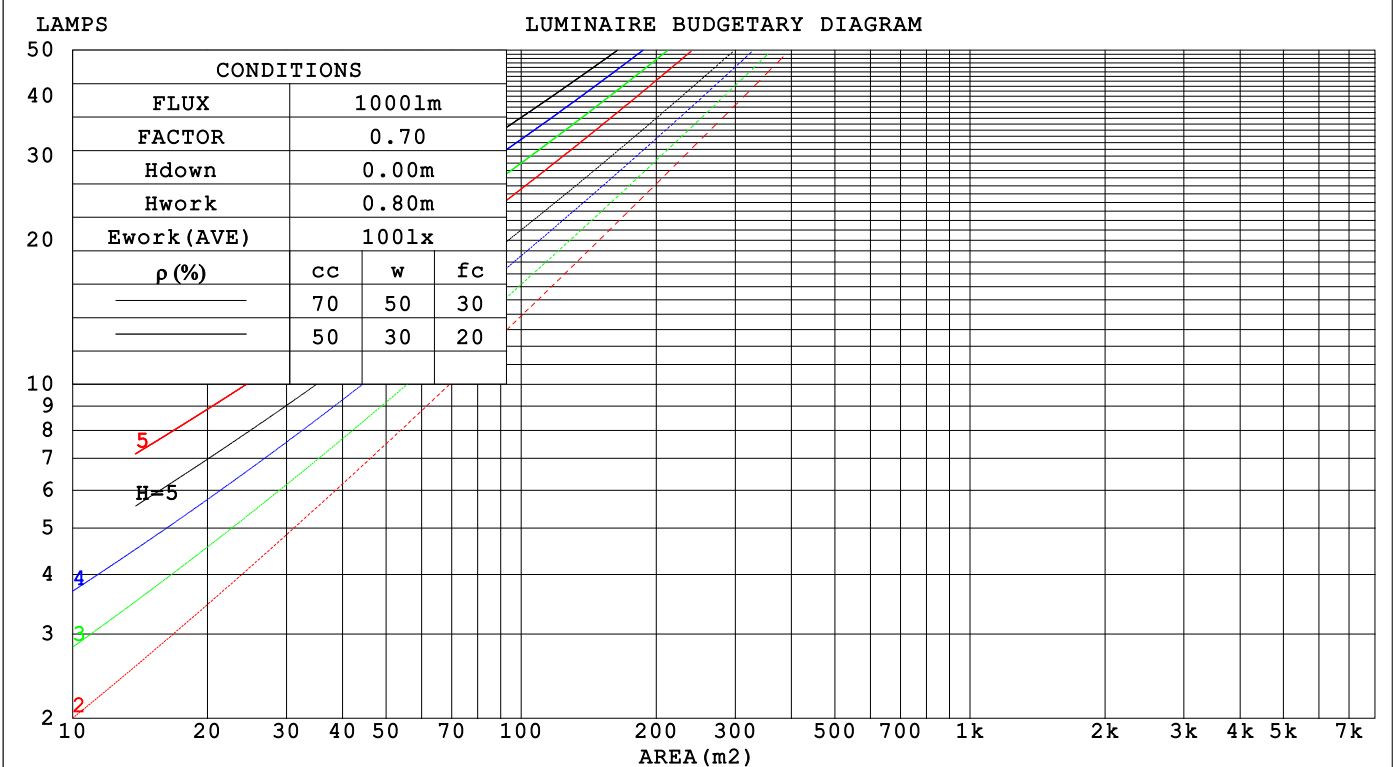
C Range: 0 - 360DEG  
 C Interval: 15.0DEG  
 Test Speed: HIGH  
 Temperature:25.3°C  
 Operators:DAMIN  
 Test Date:2023-12-14

γ Range: 0 - 90DEG  
 γ Interval: 1.0DEG  
 Test System:EVERFINE GO-2000B\_V1 SYSTEM V2.00.473  
 Humidity:65.0%  
 Test Distance:9.401m [K=1.0000]  
 Remarks:

**CU AND LUMINAIRE BUDGETARY ESTIMATE DIAGRAM**

Test:U:220.35V I:0.0745A P:9.5198W PF:0.5796 Freq:50.00Hz Lamp Flux:554.435x1 lm		
NAME:	TYPE: 筒灯	WEIGHT:
SPEC.:	DIM.:	SERIAL No.:
MFR.: EVERFINE	SUR.: 80mm	Shielding Angle:

pcc	80%			70%			50%			30%			10%			0
	50%	30%	10%	50%	30%	10%	50%	30%	10%	50%	30%	10%	50%	30%	10%	0
pw																
pfc																
RCR	RCR:Room Cavity Ratio															
	Coefficients of Utilization(CU)															
0.0	1.19	1.19	1.19	1.16	1.16	1.16	1.11	1.11	1.11	1.06	1.06	1.06	1.02	1.02	1.02	1.00
1.0	1.02	.98	.94	1.00	.96	.92	.96	.92	.89	.92	.89	.86	.88	.86	.84	.82
2.0	.89	.82	.76	.87	.81	.75	.84	.78	.74	.81	.76	.72	.78	.74	.70	.68
3.0	.79	.70	.64	.77	.69	.63	.74	.68	.62	.71	.66	.61	.69	.64	.60	.58
4.0	.70	.61	.55	.69	.61	.54	.66	.59	.53	.64	.58	.53	.62	.56	.52	.50
5.0	.63	.54	.47	.62	.53	.47	.60	.52	.47	.58	.51	.46	.56	.50	.46	.43
6.0	.57	.48	.42	.56	.48	.41	.54	.47	.41	.53	.46	.41	.51	.45	.40	.38
7.0	.52	.43	.37	.51	.43	.37	.50	.42	.37	.48	.41	.36	.47	.41	.36	.34
8.0	.48	.39	.33	.47	.39	.33	.46	.38	.33	.44	.38	.33	.43	.37	.33	.31
9.0	.44	.36	.30	.43	.35	.30	.42	.35	.30	.41	.34	.30	.40	.34	.30	.28
10.0	.41	.33	.28	.40	.33	.27	.39	.32	.27	.38	.32	.27	.37	.31	.27	.25



C Range: 0 - 360DEG  
 C Interval: 15.0DEG  
 Test Speed: HIGH  
 Temperature:25.3°C  
 Operators:DAMIN  
 Test Date:2023-12-14

γ Range: 0 - 90DEG  
 γ Interval: 1.0DEG  
 Test System:EVERFINE GO-2000B\_V1 SYSTEM V2.00.473  
 Humidity:65.0%  
 Test Distance:9.401m [K=1.0000]  
 Remarks:

WEC AND CCEC

Test:U:220.35V I:0.0745A P:9.5198W PF:0.5796 Freq:50.00Hz								
Lamp Flux:554.435x1 lm								
NAME:			TYPE: 筒灯			WEIGHT:		
SPEC.:			DIM.:			SERIAL No.:		
MFR.: EVERFINE			SUR.: 80mm			Shielding Angle:		

ρ <sub>CC</sub>	80%			70%			50%			30%			10%			0
ρ <sub>w</sub>	50%	30%	10%	50%	30%	10%	50%	30%	10%	50%	30%	10%	50%	30%	10%	0
ρ <sub>fc</sub>	20%			20%			20%			20%			20%			0
RCR	RCR:Room Cavity Ratio						Wall Exitance Coefficients(WEC)									
0.0																
1.0	.337	.192	.061	.330	.188	.060	.316	.182	.058	.304	.175	.056	.293	.170	.055	
2.0	.302	.165	.051	.296	.163	.050	.284	.158	.049	.273	.153	.048	.263	.149	.047	
3.0	.274	.146	.044	.268	.144	.043	.258	.140	.042	.248	.136	.042	.239	.132	.041	
4.0	.250	.130	.038	.245	.128	.038	.236	.125	.037	.227	.122	.037	.219	.119	.036	
5.0	.229	.117	.034	.225	.116	.034	.217	.113	.033	.209	.110	.033	.202	.108	.032	
6.0	.212	.106	.030	.208	.105	.030	.201	.103	.030	.194	.101	.030	.188	.099	.029	
7.0	.197	.097	.028	.193	.096	.027	.187	.095	.027	.181	.093	.027	.175	.091	.027	
8.0	.184	.090	.025	.181	.089	.025	.175	.087	.025	.169	.086	.025	.164	.084	.025	
9.0	.172	.083	.023	.169	.082	.023	.164	.081	.023	.159	.080	.023	.155	.079	.023	
10.0	.162	.077	.022	.159	.077	.021	.154	.076	.021	.150	.075	.021	.146	.073	.021	

ρ <sub>CC</sub>	80%			70%			50%			30%			10%			0
ρ <sub>w</sub>	50%	30%	10%	50%	30%	10%	50%	30%	10%	50%	30%	10%	50%	30%	10%	0
ρ <sub>fc</sub>	20%			20%			20%			20%			20%			0
RCR	RCR:Room Cavity Ratio						Ceiling Cavity Exitance Coefficients(CCEC)									
0.0																
1.0	.190	.190	.190	.163	.163	.163	.111	.111	.111	.064	.064	.064	.020	.020	.020	
2.0	.182	.156	.132	.156	.134	.114	.107	.092	.079	.061	.053	.046	.020	.017	.015	
3.0	.174	.132	.097	.149	.114	.084	.102	.079	.058	.059	.046	.034	.019	.015	.011	
4.0	.165	.114	.074	.142	.099	.064	.097	.069	.045	.056	.040	.026	.018	.013	.009	
5.0	.157	.101	.058	.135	.087	.051	.093	.061	.036	.054	.036	.021	.017	.012	.007	
6.0	.149	.091	.047	.128	.078	.041	.088	.055	.029	.051	.032	.017	.016	.010	.006	
7.0	.142	.082	.039	.122	.071	.034	.084	.050	.024	.049	.029	.014	.016	.010	.005	
8.0	.135	.075	.033	.116	.065	.029	.080	.046	.021	.046	.027	.012	.015	.009	.004	
9.0	.128	.069	.029	.110	.060	.025	.076	.042	.018	.044	.025	.011	.014	.008	.004	
10.0	.122	.064	.025	.105	.056	.022	.073	.039	.016	.042	.023	.009	.014	.008	.003	
10.0	.116	.060	.023	.100	.052	.020	.070	.037	.014	.041	.022	.008	.013	.007	.003	

C Range: 0 - 360DEG  
 C Interval: 15.0DEG  
 Test Speed: HIGH  
 Temperature:25.3°C  
 Operators:DAMIN  
 Test Date:2023-12-14

γ Range: 0 - 90DEG  
 γ Interval: 1.0DEG  
 Test System:EVERFINE GO-2000B\_V1 SYSTEM V2.00.473  
 Humidity:65.0%  
 Test Distance:9.401m [K=1.0000]  
 Remarks:

**UGR(Unified Glare Rating) Table**

Test:U:220.35V I:0.0745A P:9.5198W PF:0.5796 Freq:50.00Hz										
Lamp Flux:554.435x1 lm										
NAME:			TYPE: 筒灯				WEIGHT:			
SPEC.:			DIM.:				SERIAL No.:			
MFR.: EVERFINE			SUR.: 80mm				Shielding Angle:			
ceiling/cavity	0.7	0.7	0.5	0.5	0.3	0.7	0.7	0.5	0.5	0.3
walls	0.5	0.3	0.5	0.3	0.3	0.5	0.3	0.5	0.3	0.3
working plane	0.2	0.2	0.2	0.2	0.2	0.2	0.2	0.2	0.2	0.2
Room dimensions	Viewed crosswise					Viewed endwise				
x = 2H y = 2H	26.4	28.0	26.7	28.2	28.4	26.4	27.9	26.7	28.1	28.3
3H	28.1	29.5	28.4	29.7	29.9	28.0	29.4	28.3	29.7	29.9
4H	28.8	30.2	29.2	30.4	30.7	28.8	30.2	29.1	30.4	30.7
6H	29.7	30.9	30.0	31.2	31.5	29.6	30.9	30.0	31.2	31.4
8H	30.2	31.4	30.5	31.7	31.9	30.1	31.3	30.4	31.6	31.9
12H	30.8	32.0	31.1	32.2	32.6	30.6	31.8	31.0	32.1	32.4
4H 2H	27.1	28.4	27.4	28.6	28.9	27.0	28.4	27.3	28.6	28.9
3H	28.9	30.1	29.3	30.4	30.7	28.9	30.1	29.2	30.4	30.7
4H	29.8	30.9	30.2	31.3	31.6	29.8	30.9	30.2	31.2	31.6
6H	30.9	31.8	31.3	32.2	32.5	30.8	31.8	31.2	32.2	32.5
8H	31.5	32.4	31.9	32.8	33.1	31.4	32.3	31.8	32.7	33.1
12H	32.2	33.1	32.7	33.5	33.9	32.1	32.9	32.5	33.3	33.7
8H 4H	30.2	31.2	30.7	31.5	31.9	30.2	31.1	30.6	31.5	31.9
6H	31.5	32.3	32.0	32.7	33.1	31.5	32.3	32.0	32.7	33.1
8H	32.4	33.0	32.8	33.5	33.9	32.3	33.0	32.7	33.4	33.8
12H	33.4	34.0	33.8	34.4	34.9	33.2	33.8	33.7	34.2	34.7
12H 4H	30.3	31.2	30.7	31.5	32.0	30.3	31.2	30.7	31.5	31.9
6H	31.7	32.4	32.2	32.8	33.3	31.7	32.4	32.2	32.8	33.3
8H	32.7	33.2	33.1	33.7	34.2	32.6	33.2	33.1	33.6	34.1
Variations with the observer position at spacings(CIE Pub.117):										
S = 1.0H	+ 0.1 / - 0.2					+ 0.1 / - 0.2				
1.5H	+ 0.2 / - 0.3					+ 0.2 / - 0.3				
2.0H	+ 0.1 / - 0.3					+ 0.1 / - 0.3				

CIE Pub.117, 554.4 lm Total Lamp Luminous Flux Correct (8log(F/F0) = -2.0)  
 Area: 0.005 m2

C Range: 0 - 360DEG  
 C Interval: 15.0DEG  
 Test Speed: HIGH  
 Temperature:25.3°C  
 Operators:DAMIN  
 Test Date:2023-12-14

γ Range: 0 - 90DEG  
 γ Interval: 1.0DEG  
 Test System:EVERFINE GO-2000B\_V1 SYSTEM V2.00.473  
 Humidity:65.0%  
 Test Distance:9.401m [K=1.0000]  
 Remarks:

**UTILIZATION FACTORS TABLE**

Test:U:220.35V I:0.0745A P:9.5198W PF:0.5796 Freq:50.00Hz Lamp Flux:554.435x1 lm		
NAME:	TYPE: 筒灯	WEIGHT:
SPEC.:	DIM.:	SERIAL No.:
MFR.: EVERFINE	SUR.: 80mm	Shielding Angle:

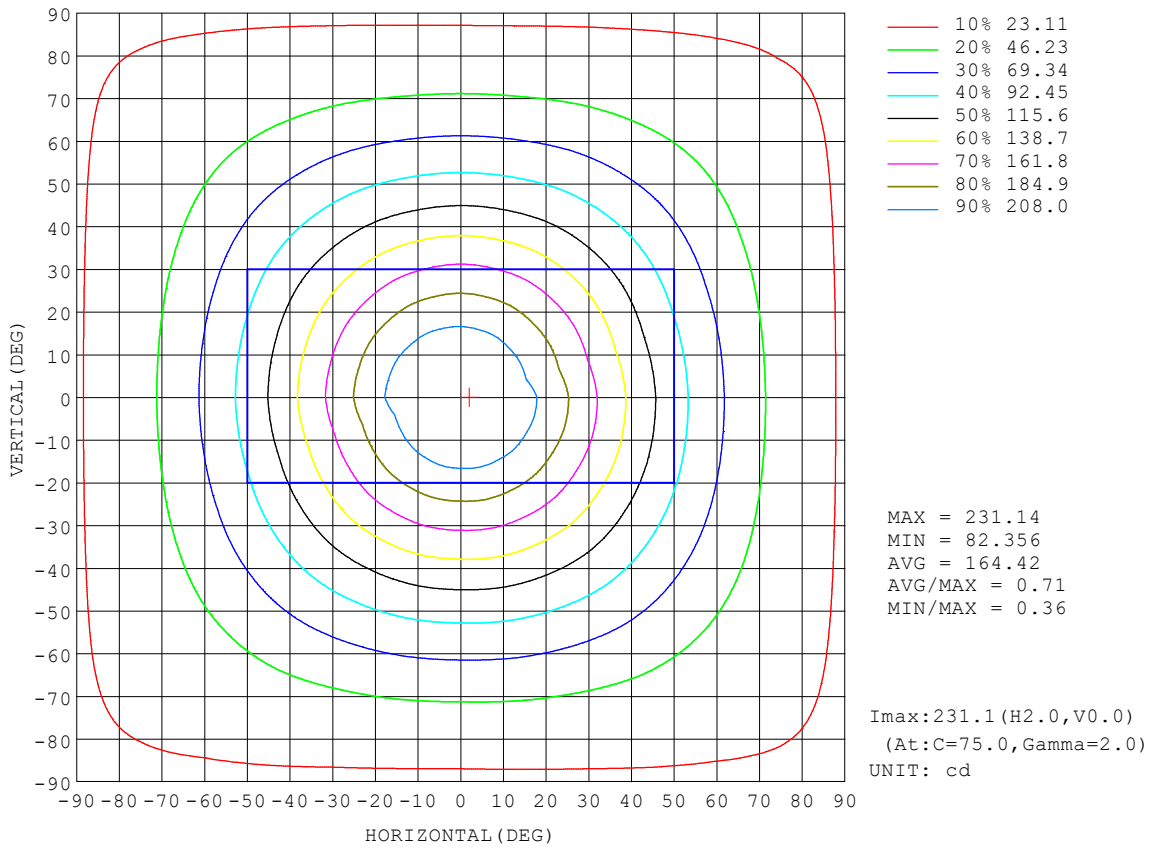
REFLECTANCE										
Ceiling	0.8	0.8	0.8	0.7	0.7	0.7	0.5	0.5	0.5	0
Walls	0.7	0.5	0.3	0.7	0.5	0.3	0.7	0.5	0.3	0
Working plane	0.2	0.2	0.2	0.2	0.2	0.2	0.2	0.2	0.2	0
ROOM INDEX	UTILIZATION FACTORS (PERCENT) $k(RI) \times RCR = 5$									
k = 0.60	59	48	41	58	47	41	57	47	40	34
0.80	69	57	50	68	57	50	66	56	49	42
1.00	76	65	58	75	65	58	73	66	57	50
1.25	83	73	65	82	72	65	79	70	64	57
1.50	88	78	71	86	77	70	83	75	69	62
2.00	94	86	79	92	84	78	89	82	77	69
2.50	98	90	84	96	89	83	92	86	81	73
3.00	101	94	88	99	93	87	95	90	85	76
4.00	105	99	94	103	97	93	98	94	90	81
5.00	108	102	98	105	100	96	101	97	93	84
ROOM INDEX	UF(total)									Direct
According to DIN EN 13032-2 2004			Suspended				SHRNOM = 1.25			

C Range: 0 - 360DEG  
 C Interval: 15.0DEG  
 Test Speed: HIGH  
 Temperature:25.3°C  
 Operators:DAMIN  
 Test Date:2023-12-14

$\gamma$  Range: 0 - 90DEG  
 $\gamma$  Interval: 1.0DEG  
 Test System:EVERFINE GO-2000B\_V1 SYSTEM V2.00.473  
 Humidity:65.0%  
 Test Distance:9.401m [K=1.0000]  
 Remarks:

**ISOCANDELA DIAGRAM**

Test:U:220.35V I:0.0745A P:9.5198W PF:0.5796 Freq:50.00Hz Lamp Flux:554.435x1 lm		
NAME:	TYPE: 筒灯	WEIGHT:
SPEC.:	DIM.:	SERIAL No.:
MFR.: EVERFINE	SUR.: 80mm	Shielding Angle:



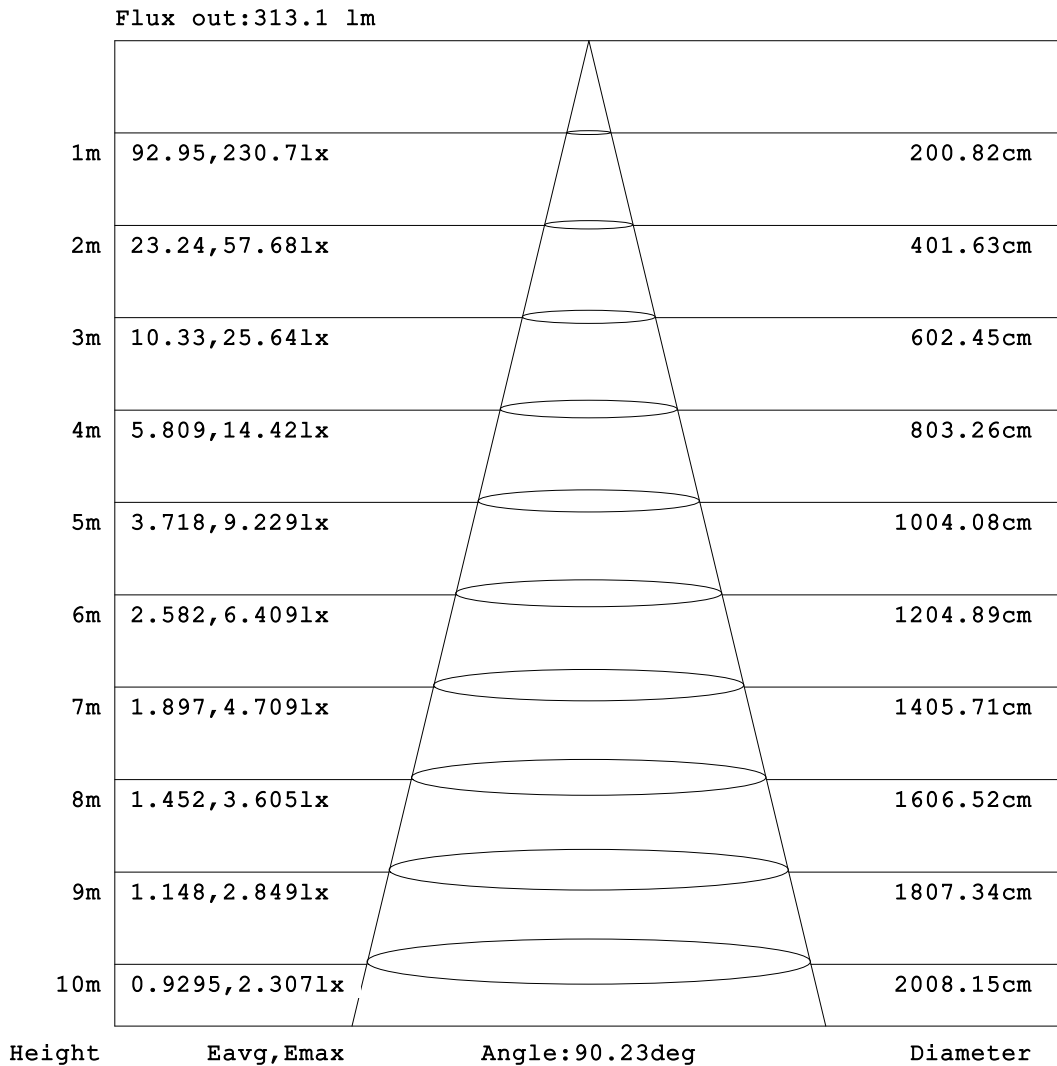
C Range: 0 - 360DEG  
 C Interval: 15.0DEG  
 Test Speed: HIGH  
 Temperature:25.3°C  
 Operators:DAMIN  
 Test Date:2023-12-14

γ Range: 0 - 90DEG  
 γ Interval: 1.0DEG  
 Test System:EVERFINE GO-2000B\_V1 SYSTEM V2.00.473  
 Humidity:65.0%  
 Test Distance:9.401m [K=1.0000]  
 Remarks:



**AAI Figure**

Test:U:220.35V I:0.0745A P:9.5198W PF:0.5796 Freq:50.00Hz Lamp Flux:554.435x1 lm		
NAME:	TYPE: 筒灯	WEIGHT:
SPEC.:	DIM.:	SERIAL No.:
MFR.: EVERFINE	SUR.: 80mm	Shielding Angle:



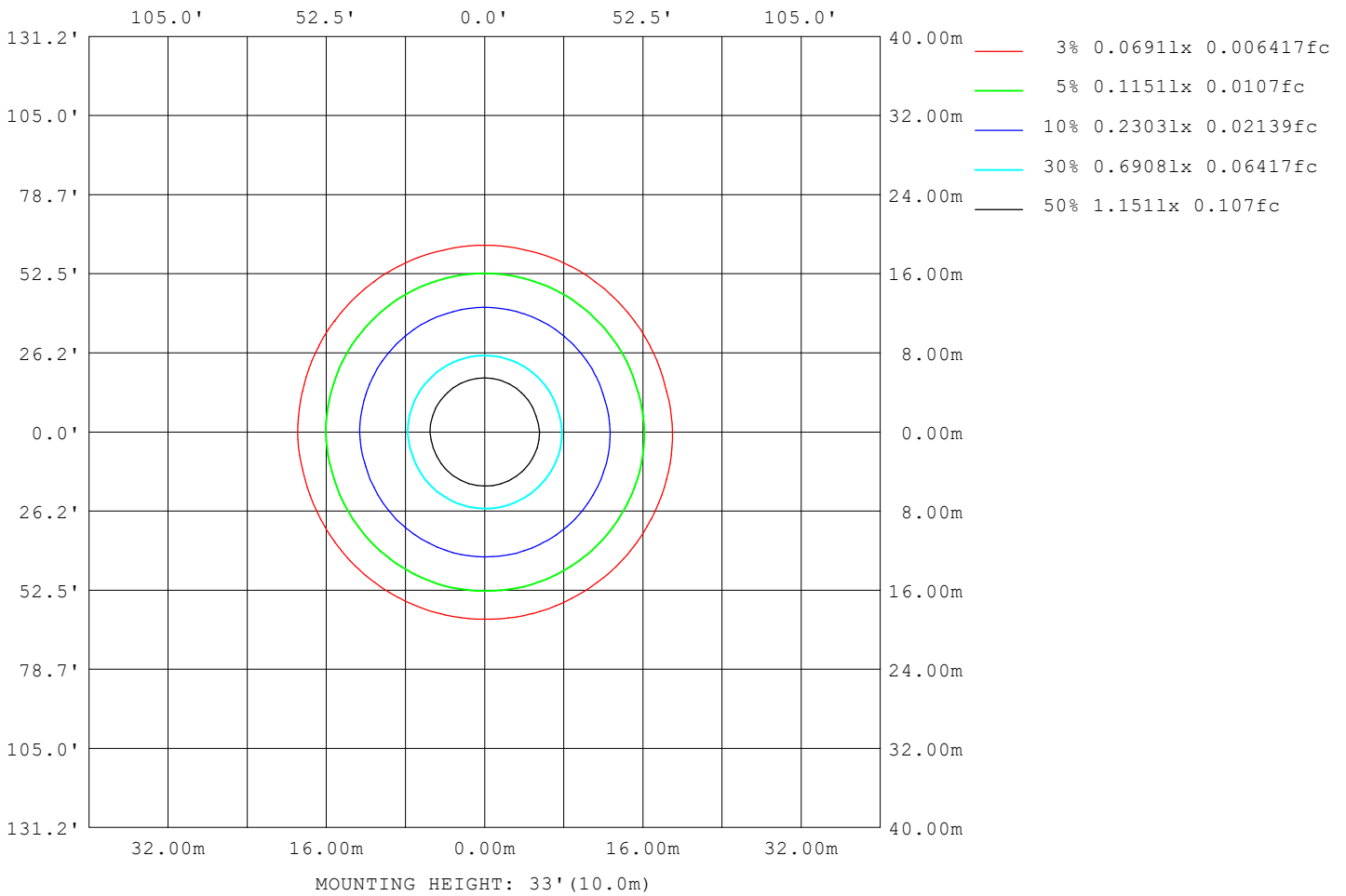
Note:The Curves indicate the illuminated area and the average illumination when the luminaire is at different distance.

C Range: 0 - 360DEG  
C Interval: 15.0DEG  
Test Speed: HIGH  
Temperature:25.3°C  
Operators:DAMIN  
Test Date:2023-12-14

γ Range: 0 - 90DEG  
γ Interval: 1.0DEG  
Test System:EVERFINE GO-2000B\_V1 SYSTEM V2.00.473  
Humidity:65.0%  
Test Distance:9.401m [K=1.0000]  
Remarks:

**ISOLUX DIAGRAM**

Test:U:220.35V I:0.0745A P:9.5198W PF:0.5796 Freq:50.00Hz Lamp Flux:554.435x1 lm		
NAME:	TYPE: 筒灯	WEIGHT:
SPEC.:	DIM.:	SERIAL No.:
MFR.: EVERFINE	SUR.: 80mm	Shielding Angle:



C Range: 0 - 360DEG  
 C Interval: 15.0DEG  
 Test Speed: HIGH  
 Temperature:25.3°C  
 Operators:DAMIN  
 Test Date:2023-12-14

γ Range: 0 - 90DEG  
 γ Interval: 1.0DEG  
 Test System:EVERFINE GO-2000B\_V1 SYSTEM V2.00.473  
 Humidity:65.0%  
 Test Distance:9.401m [K=1.0000]  
 Remarks:

**LED Avg.L Report**

Test:U:220.35V I:0.0745A P:9.5198W PF:0.5796 Freq:50.00Hz Lamp Flux:554.435x1 lm		
NAME:	TYPE: 筒灯	WEIGHT:
SPEC.:	DIM.:	SERIAL No.:
MFR.: EVERFINE	SUR.: 80mm	Shielding Angle:

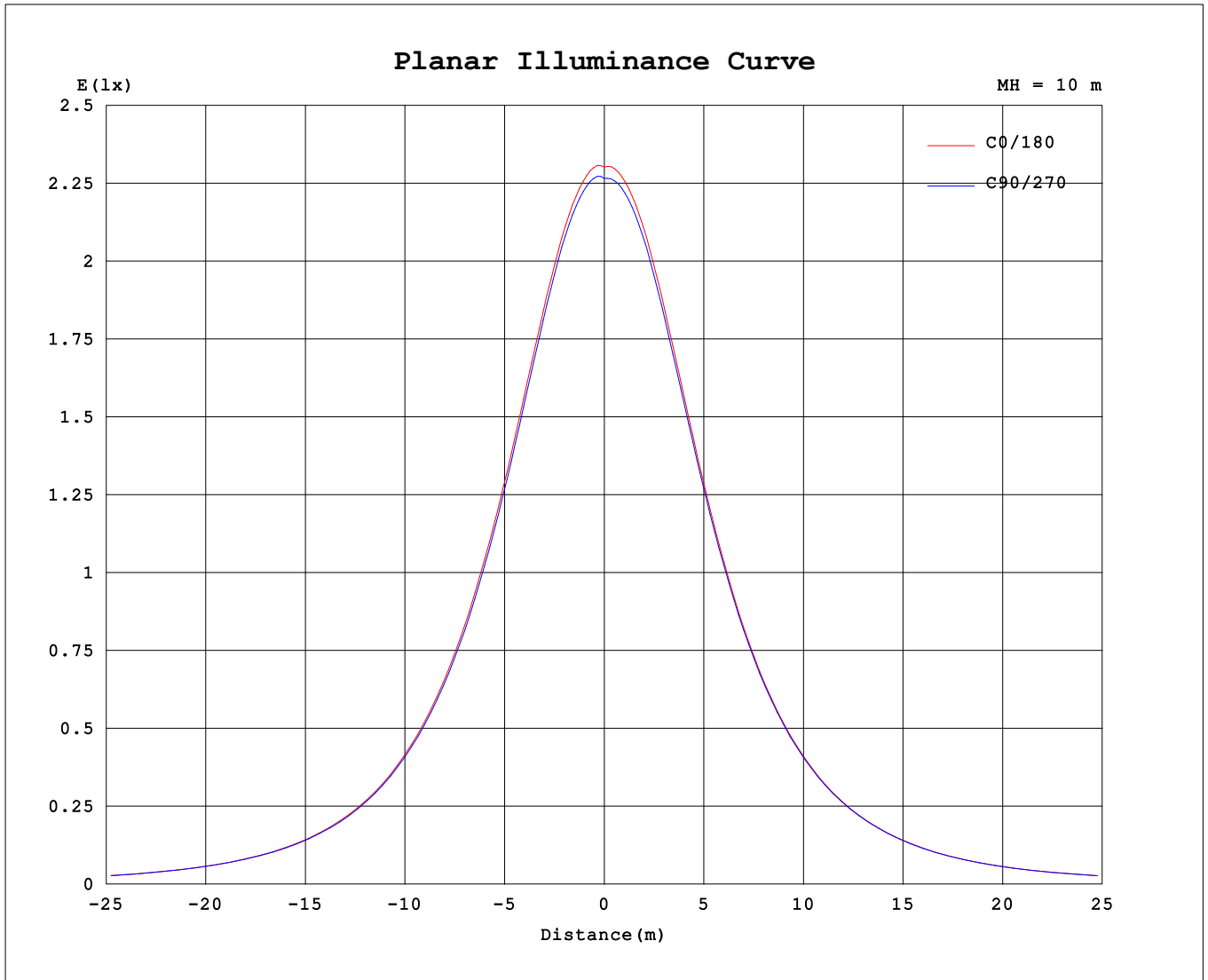
AvgL	cd/m2
L_0~180 (65) av	28338
L_0~180 (75) av	29511
L_0~180 (85) av	61856
L_90~270 (65) av	28642
L_90~270 (75) av	29832
L_90~270 (85) av	57781
L_45 (65) av	28608
L_45 (75) av	29974
L_45 (85) av	60632

Standard: GB/T 29293-2012

C Range: 0 - 360DEG  
 C Interval: 15.0DEG  
 Test Speed: HIGH  
 Temperature:25.3°C  
 Operators:DAMIN  
 Test Date:2023-12-14

γ Range: 0 - 90DEG  
 γ Interval: 1.0DEG  
 Test System:EVERFINE GO-2000B\_V1 SYSTEM V2.00.473  
 Humidity:65.0%  
 Test Distance:9.401m [K=1.0000]  
 Remarks:

**Planar Illuminance Curve**



C Range: 0 - 360DEG  
 C Interval: 15.0DEG  
 Test Speed: HIGH  
 Temperature: 25.3°C  
 Operators: DAMIN  
 Test Date: 2023-12-14

γ Range: 0 - 90DEG  
 γ Interval: 1.0DEG  
 Test System: EVERFINE GO-2000B\_V1 SYSTEM V2.00.473  
 Humidity: 65.0%  
 Test Distance: 9.401m [K=1.0000]  
 Remarks:



