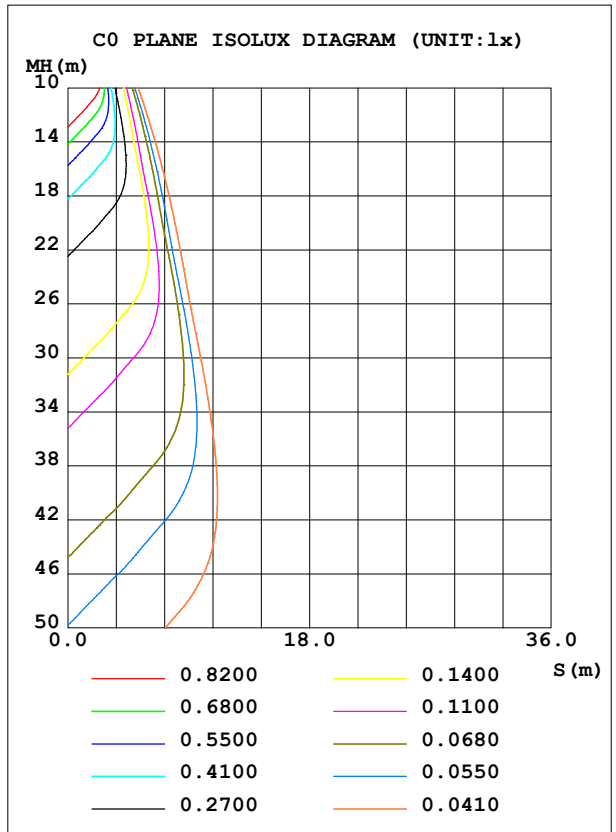
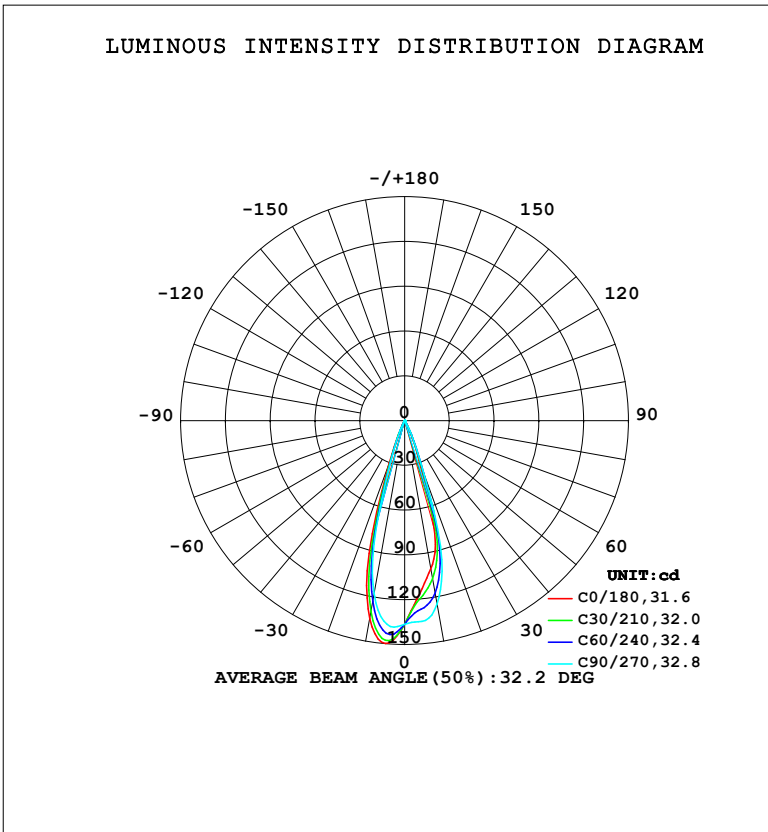


LUMINAIRE PHOTOMETRIC TEST REPORT

Test:U:230.41V I:0.0142A P:1.3568W PF:0.4140 Freq:50.00Hz Lamp Flux:39.6296x1 lm		
NAME:	TYPE:	WEIGHT:
SPEC.: 3000K	DIM.:	SERIAL No.:
MFR.: EVERFINE	SUR.:	Shielding Angle:

DATA OF LAMP		PHOTOMETRIC DATA				Eff: 29.21 lm/W
MODEL	352	I _{max} (cd)	150.2	S/MH (C0/180)	0.48	
NOMINAL POWER (W)	1	LOR (%)	100.0	S/MH (C90/270)	0.45	
RATED VOLTAGE (V)	230	TOTAL FLUX (lm)	39.630	η UP, DN (C0-180)	0.0, 53.7	
NOMINAL FLUX (lm)	39.6296	CIE CLASS	DIRECT	η UP, DN (C180-360)	0.0, 46.3	
LAMPS INSIDE	1	η up (%)	0.0	CIBSE SHR NOM	0.00	
TEST VOLTAGE (V)	230	η down (%)	100.0	CIBSE SHR MAX	0.30	



C Range: 0 - 360DEG
 C Interval: 15.0DEG
 Test Speed: HIGH
 Temperature: 25.3°C
 Operators: DAMIN
 Test Date: 2024-11-25

γ Range: 0 - 90DEG
 γ Interval: 1.0DEG
 Test System: EVERFINE GO-2000B_V1 SYSTEM V2.00.473
 Humidity: 65.0%
 Test Distance: 9.401m [K=1.0000]
 Remarks:

ZONAL FLUX DIAGRAM

ZONAL FLUX DIAGRAM:

γ	C0	C45	C90	C135	C180	C225	C270	C315	γ	Φ zone	Φ total	%lum,lamp
10	101.0	112.8	124.8	135.8	134.6	125.7	118.0	107.5	0- 10	12.40	12.40	31.3,31.3
20	28.59	36.49	38.68	36.91	30.25	24.53	23.32	23.79	10- 20	21.30	33.70	85,85
30	3.000	3.697	3.271	2.471	1.833	1.666	1.736	2.149	20- 30	5.169	38.87	98.1,98.1
40	0.5613	0.5394	0.5429	0.3674	0.2641	0.2949	0.2879	0.4355	30- 40	0.6573	39.52	99.7,99.7
50	0.0424	0	0.0303	0	0	0	0	0.0182	40- 50	0.1058	39.63	100,100
60	0	0	0	0	0	0	0	0	50- 60	0.0007	39.63	100,100
70	0	0	0	0	0	0	0	0	60- 70	0	39.63	100,100
80	0	0	0	0	0	0	0	0	70- 80	0	39.63	100,100
90	0	0	0	0	0	0	0	0	80- 90	0	39.63	100,100
100									90-100			
110									100-110			
120									110-120			
130									120-130			
140									130-140			
150									140-150			
160									150-160			
170									160-170			
180									170-180			
DEG	LUMINOUS INTENSITY:cd									UNIT:lm		

Conical surface Flux(90deg): 39.611 lm

%lum = 100.0%

%lamp = 100.0%

Conical surface Flux(130deg): 39.63 lm

%lum = 100.0%

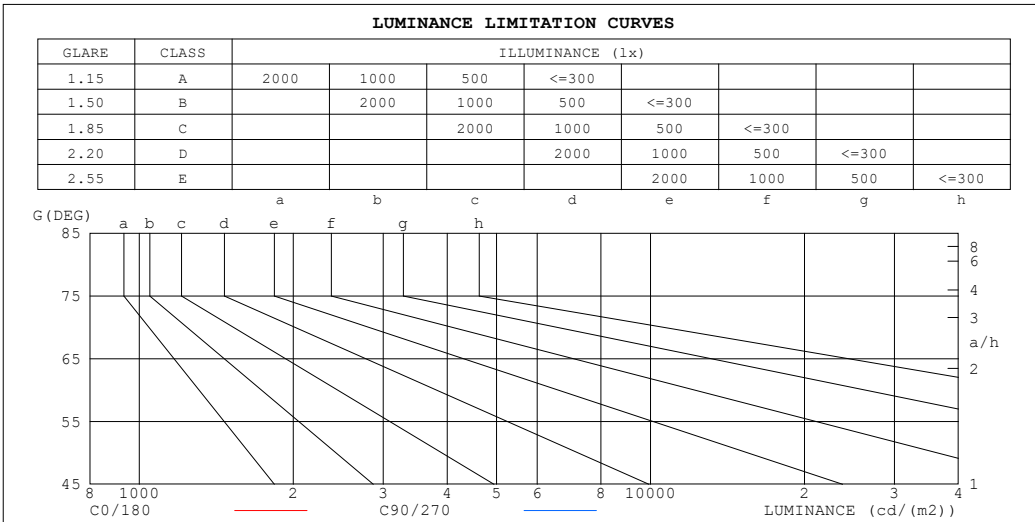
%lamp = 100.0%

C Range: 0 - 360DEG
 C Interval: 15.0DEG
 Test Speed: HIGH
 Temperature:25.3°C
 Operators:DAMIN
 Test Date:2024-11-25

γ Range: 0 - 90DEG
 γ Interval: 1.0DEG
 Test System:EVERFINE GO-2000B_V1 SYSTEM V2.00.473
 Humidity:65.0%
 Test Distance:9.401m [K=1.0000]
 Remarks:

LUMINANCE LIMITATION CURVES

Test:U:230.41V I:0.0142A P:1.3568W PF:0.4140 Freq:50.00Hz Lamp Flux:39.6296x1 lm		
NAME:	TYPE:	WEIGHT:
SPEC.: 3000K	DIM.:	SERIAL No.:
MFR.: EVERFINE	SUR.:	Shielding Angle:



LUMINANCE cd/ (m2)		
G (DEG)	C0/180	C90/270
85	0	0
80	0	0
75	0	0
70	0	0
65	0	0
60	0	0
55	0	0
50	1	0
45	3	3

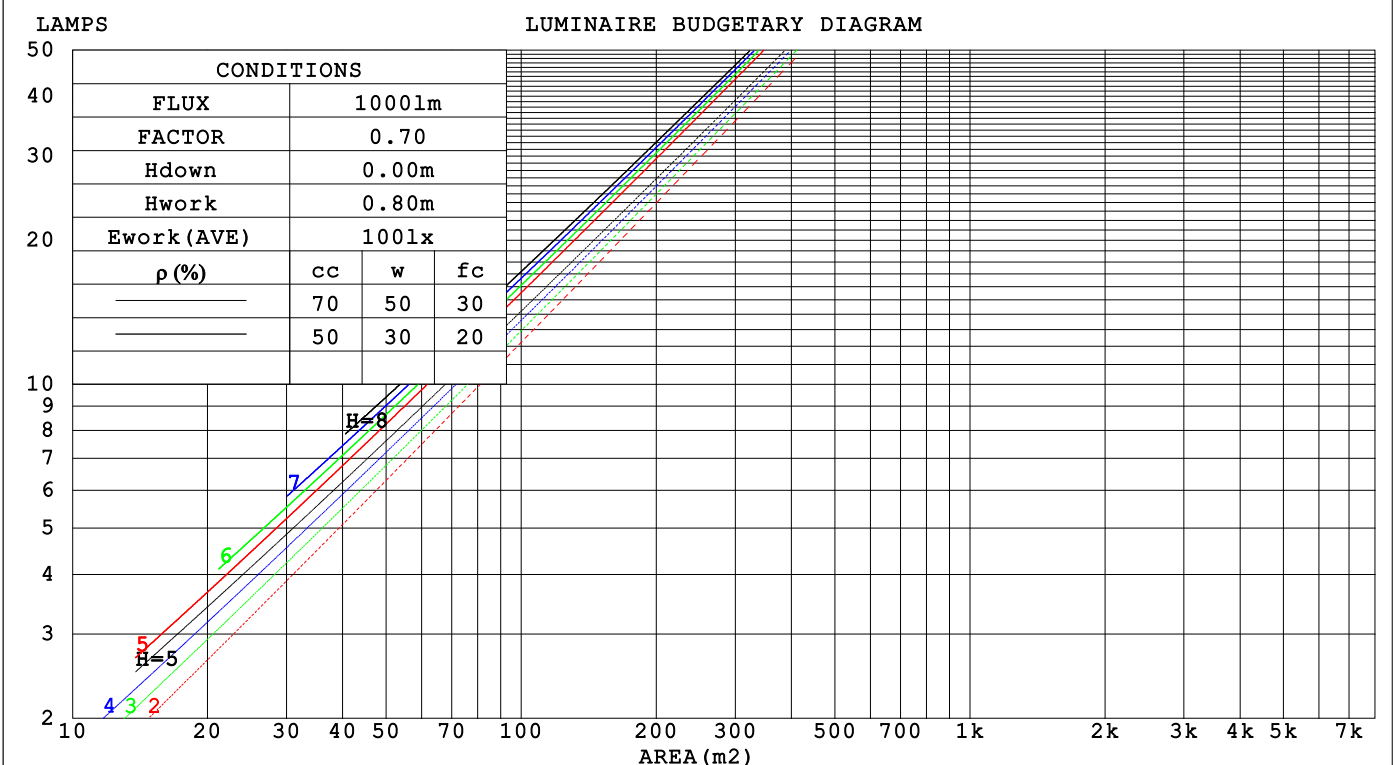
C Range: 0 - 360DEG
 C Interval: 15.0DEG
 Test Speed: HIGH
 Temperature:25.3°C
 Operators:DAMIN
 Test Date:2024-11-25

γ Range: 0 - 90DEG
 γ Interval: 1.0DEG
 Test System:EVERFINE GO-2000B_V1 SYSTEM V2.00.473
 Humidity:65.0%
 Test Distance:9.401m [K=1.0000]
 Remarks:

CU AND LUMINAIRE BUDGETARY ESTIMATE DIAGRAM

Test:U:230.41V I:0.0142A P:1.3568W PF:0.4140 Freq:50.00Hz Lamp Flux:39.6296x1 lm		
NAME:	TYPE:	WEIGHT:
SPEC.: 3000K	DIM.:	SERIAL No.:
MFR.: EVERFINE	SUR.:	Shielding Angle:

ρ_{cc}	80%			70%			50%			30%			10%			0
ρ_w	50%	30%	10%	50%	30%	10%	50%	30%	10%	50%	30%	10%	50%	30%	10%	0
ρ_{fc}	20%			20%			20%			20%			20%			0
RCR	RCR:Room Cavity Ratio Coefficients of Utilization(CU)															
0.0	1.19	1.19	1.19	1.16	1.16	1.16	1.11	1.11	1.11	1.06	1.06	1.06	1.02	1.02	1.02	1.00
1.0	1.13	1.11	1.09	1.11	1.09	1.08	1.07	1.06	1.04	1.03	1.02	1.01	.00	.99	.98	.97
2.0	1.08	1.05	1.02	1.06	1.04	1.01	1.03	1.01	.99	1.00	.99	.97	.98	.96	.95	.94
3.0	1.03	.00	.97	1.02	.99	.96	.00	.97	.95	.97	.95	.93	.95	.94	.92	.91
4.0	.99	.96	.93	.98	.95	.92	.96	.93	.91	.95	.92	.90	.93	.91	.89	.88
5.0	.96	.92	.89	.95	.91	.89	.93	.90	.88	.92	.89	.87	.91	.88	.86	.85
6.0	.93	.89	.86	.92	.88	.85	.91	.87	.85	.89	.87	.84	.88	.86	.84	.83
7.0	.90	.86	.83	.89	.85	.83	.88	.85	.82	.87	.84	.82	.86	.83	.81	.80
8.0	.87	.83	.80	.87	.83	.80	.86	.82	.80	.85	.82	.79	.84	.81	.79	.78
9.0	.84	.80	.78	.84	.80	.78	.83	.80	.77	.83	.79	.77	.82	.79	.77	.76
10.0	.82	.78	.76	.82	.78	.75	.81	.78	.75	.80	.77	.75	.80	.77	.75	.74



C Range: 0 - 360DEG
 C Interval: 15.0DEG
 Test Speed: HIGH
 Temperature:25.3°C
 Operators:DAMIN
 Test Date:2024-11-25

γ Range: 0 - 90DEG
 γ Interval: 1.0DEG
 Test System:EVERFINE GO-2000B_V1 SYSTEM V2.00.473
 Humidity:65.0%
 Test Distance:9.401m [K=1.0000]
 Remarks:

WEC AND CCEC

Test:U:230.41V I:0.0142A P:1.3568W PF:0.4140 Freq:50.00Hz		
Lamp Flux:39.6296x1 lm		
NAME:	TYPE:	WEIGHT:
SPEC.: 3000K	DIM.:	SERIAL No.:
MFR.: EVERFINE	SUR.:	Shielding Angle:

ρ_{CC}	80%			70%			50%			30%			10%			0
ρ_w	50%	30%	10%	50%	30%	10%	50%	30%	10%	50%	30%	10%	50%	30%	10%	0
ρ_{fc}	20%			20%			20%			20%			20%			0
RCR	RCR:Room Cavity Ratio						Wall Exitance Coefficients (WEC)									
0.0																
1.0	.135	.077	.024	.128	.073	.023	.116	.066	.021	.104	.060	.019	.094	.054	.018	
2.0	.124	.068	.021	.119	.066	.020	.109	.061	.019	.099	.056	.017	.091	.051	.016	
3.0	.116	.062	.018	.111	.060	.018	.103	.056	.017	.095	.052	.016	.088	.049	.015	
4.0	.109	.056	.017	.105	.055	.016	.098	.052	.015	.091	.049	.015	.085	.046	.014	
5.0	.102	.052	.015	.099	.051	.015	.093	.048	.014	.087	.046	.014	.082	.044	.013	
6.0	.097	.049	.014	.094	.048	.014	.089	.046	.013	.084	.044	.013	.079	.042	.012	
7.0	.092	.046	.013	.090	.045	.013	.085	.043	.012	.081	.042	.012	.077	.040	.012	
8.0	.088	.043	.012	.086	.042	.012	.082	.041	.012	.078	.040	.011	.075	.038	.011	
9.0	.084	.041	.011	.082	.040	.011	.079	.039	.011	.076	.038	.011	.072	.037	.011	
10.0	.081	.039	.011	.079	.038	.011	.076	.037	.011	.073	.036	.010	.070	.035	.010	

ρ_{CC}	80%			70%			50%			30%			10%			0
ρ_w	50%	30%	10%	50%	30%	10%	50%	30%	10%	50%	30%	10%	50%	30%	10%	0
ρ_{fc}	20%			20%			20%			20%			20%			0
RCR	RCR:Room Cavity Ratio						Ceiling Cavity Exitance Coefficients (CCEC)									
0.0	.190	.190	.190	.163	.163	.163	.111	.111	.111	.064	.064	.064	.020	.020	.020	
1.0	.168	.158	.148	.144	.135	.128	.098	.093	.088	.057	.054	.051	.018	.017	.017	
2.0	.150	.133	.118	.128	.114	.102	.088	.079	.071	.051	.046	.042	.016	.015	.014	
3.0	.135	.113	.096	.116	.098	.083	.079	.068	.058	.046	.040	.034	.015	.013	.011	
4.0	.122	.098	.079	.105	.085	.069	.072	.059	.048	.042	.035	.029	.013	.011	.009	
5.0	.112	.086	.066	.096	.074	.058	.066	.052	.041	.038	.030	.024	.012	.010	.008	
6.0	.103	.075	.056	.088	.065	.049	.061	.046	.034	.035	.027	.020	.011	.009	.007	
7.0	.095	.067	.048	.082	.058	.042	.057	.041	.029	.033	.024	.018	.011	.008	.006	
8.0	.089	.061	.041	.076	.052	.036	.053	.037	.025	.031	.022	.015	.010	.007	.005	
9.0	.083	.055	.036	.072	.048	.031	.050	.033	.022	.029	.020	.013	.009	.006	.004	
10.0	.078	.050	.031	.067	.044	.027	.047	.031	.019	.027	.018	.012	.009	.006	.004	

C Range: 0 - 360DEG
 C Interval: 15.0DEG
 Test Speed: HIGH
 Temperature:25.3°C
 Operators:DAMIN
 Test Date:2024-11-25

γ Range: 0 - 90DEG
 γ Interval: 1.0DEG
 Test System:EVERFINE GO-2000B_V1 SYSTEM V2.00.473
 Humidity:65.0%
 Test Distance:9.401m [K=1.0000]
 Remarks:

UGR(Unified Glare Rating) Table

Test:U:230.41V I:0.0142A P:1.3568W PF:0.4140 Freq:50.00Hz Lamp Flux:39.6296x1 lm		
NAME:	TYPE:	WEIGHT:
SPEC.: 3000K	DIM.:	SERIAL No.:
MFR.: EVERFINE	SUR.:	Shielding Angle:

ceiling/cavity	0.7	0.7	0.5	0.5	0.3	0.7	0.7	0.5	0.5	0.3
walls	0.5	0.3	0.5	0.3	0.3	0.5	0.3	0.5	0.3	0.3
working plane	0.2	0.2	0.2	0.2	0.2	0.2	0.2	0.2	0.2	0.2

Room dimensions	Viewed crosswise					Viewed endwise				
x = 2H y = 2H	-8.3	-7.6	-8.1	-7.5	-7.3	-8.1	-7.4	-7.9	-7.3	-7.1
3H	-8.4	-7.8	-8.2	-7.6	-7.4	-8.2	-7.6	-8.0	-7.4	-7.3
4H	-8.5	-7.9	-8.2	-7.7	-7.5	-8.3	-7.7	-8.0	-7.5	-7.3
6H	-8.6	-8.0	-8.3	-7.8	-7.6	-8.4	-7.9	-8.1	-7.6	-7.4
8H	-8.6	-8.1	-8.3	-7.9	-7.6	-8.4	-7.9	-8.1	-7.7	-7.4
12H	-8.7	-8.2	-8.4	-7.9	-7.6	-8.5	-8.0	-8.2	-7.7	-7.5
4H 2H	-8.5	-7.9	-8.2	-7.7	-7.5	-8.3	-7.7	-8.0	-7.5	-7.3
3H	-8.7	-8.2	-8.4	-7.9	-7.6	-8.5	-8.0	-8.2	-7.7	-7.5
4H	-8.8	-8.3	-8.4	-8.0	-7.7	-8.6	-8.1	-8.2	-7.8	-7.5
6H	-8.9	-8.5	-8.5	-8.1	-7.8	-8.7	-8.3	-8.3	-7.9	-7.6
8H	-8.9	-8.5	-8.5	-8.2	-7.8	-8.7	-8.4	-8.3	-8.0	-7.6
12H	-9.0	-8.6	-8.6	-8.3	-7.9	-8.8	-8.4	-8.4	-8.1	-7.7
8H 4H	-8.9	-8.5	-8.5	-8.2	-7.8	-8.7	-8.4	-8.3	-8.0	-7.6
6H	-9.0	-8.7	-8.6	-8.3	-7.9	-8.8	-8.5	-8.4	-8.1	-7.7
8H	-9.1	-8.8	-8.6	-8.4	-8.0	-8.9	-8.6	-8.5	-8.2	-7.8
12H	-9.2	-8.9	-8.7	-8.5	-8.0	-9.0	-8.7	-8.5	-8.3	-7.8
12H 4H	-9.0	-8.6	-8.6	-8.3	-7.9	-8.8	-8.4	-8.4	-8.1	-7.7
6H	-9.1	-8.8	-8.6	-8.4	-8.0	-8.9	-8.6	-8.5	-8.2	-7.8
8H	-9.2	-8.9	-8.7	-8.5	-8.0	-9.0	-8.7	-8.5	-8.3	-7.8

Variations with the observer position at spacings(CIE Pub.117):		
S = 1.0H	+ 3.4 / - 1.5	+ 3.4 / - 1.5
1.5H	+ 6.0 / - 1.5	+ 6.0 / - 1.5
2.0H	+ 9.7 / - 1.5	+ 9.7 / - 1.5

CIE Pub.117, 39.63 lm Total Lamp Luminous Flux Correct (8log(F/F0) = -11.2)
Area: 0.1 m2

C Range: 0 - 360DEG	γ Range: 0 - 90DEG
C Interval: 15.0DEG	γ Interval: 1.0DEG
Test Speed: HIGH	Test System:EVERFINE GO-2000B_V1 SYSTEM V2.00.473
Temperature:25.3°C	Humidity:65.0%
Operators:DAMIN	Test Distance:9.401m [K=1.0000]
Test Date:2024-11-25	Remarks:

UTILIZATION FACTORS TABLE

Test:U:230.41V I:0.0142A P:1.3568W PF:0.4140 Freq:50.00Hz Lamp Flux:39.6296x1 lm		
NAME:	TYPE:	WEIGHT:
SPEC.: 3000K	DIM.:	SERIAL No.:
MFR.: EVERFINE	SUR.:	Shielding Angle:

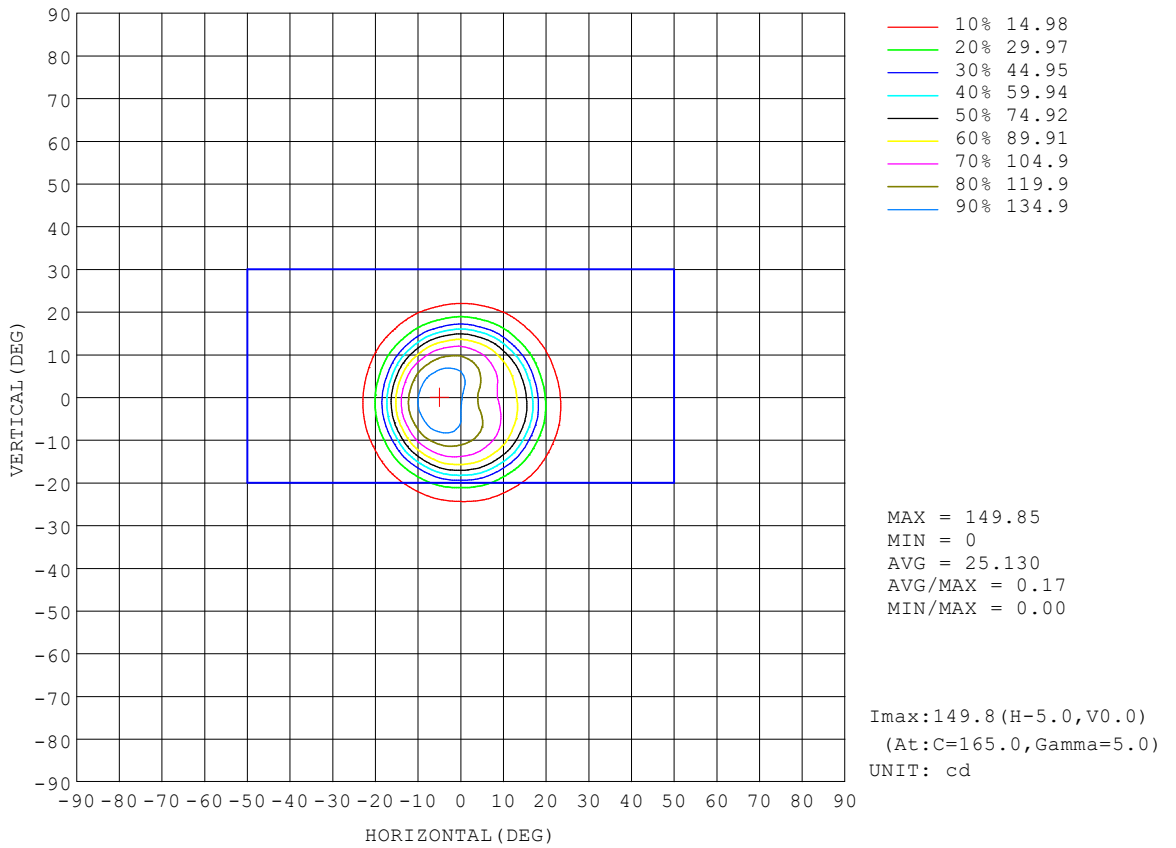
REFLECTANCE										
Ceiling	0.8	0.8	0.8	0.7	0.7	0.7	0.5	0.5	0.5	0
Walls	0.7	0.5	0.3	0.7	0.5	0.3	0.7	0.5	0.3	0
Working plane	0.2	0.2	0.2	0.2	0.2	0.2	0.2	0.2	0.2	0
ROOM INDEX	UTILIZATION FACTORS (PERCENT) $k(RI) \times RCR = 5$									
$k = 0.60$	91	86	82	91	86	82	90	85	82	79
0.80	98	93	90	98	93	90	97	92	89	86
1.00	102	97	94	101	97	94	100	96	93	90
1.25	105	101	98	104	100	97	103	99	97	93
1.50	108	104	101	107	103	100	105	102	99	95
2.00	110	106	103	109	105	103	106	103	101	96
2.50	111	108	105	110	107	104	107	104	103	97
3.00	113	110	107	111	108	106	108	106	104	98
4.00	115	112	110	113	111	109	109	107	106	99
5.00	116	114	112	114	112	111	110	109	108	100
ROOM INDEX	UF(total)									Direct
According to DIN EN 13032-2 2004			Suspended				SHRNOM = 1.25			

C Range: 0 - 360DEG
 C Interval: 15.0DEG
 Test Speed: HIGH
 Temperature:25.3°C
 Operators:DAMIN
 Test Date:2024-11-25

γ Range: 0 - 90DEG
 γ Interval: 1.0DEG
 Test System:EVERFINE GO-2000B_V1 SYSTEM V2.00.473
 Humidity:65.0%
 Test Distance:9.401m [K=1.0000]
 Remarks:

ISOCANDELA DIAGRAM

Test:U:230.41V I:0.0142A P:1.3568W PF:0.4140 Freq:50.00Hz Lamp Flux:39.6296x1 lm		
NAME:	TYPE:	WEIGHT:
SPEC.: 3000K	DIM.:	SERIAL No.:
MFR.: EVERFINE	SUR.:	Shielding Angle:

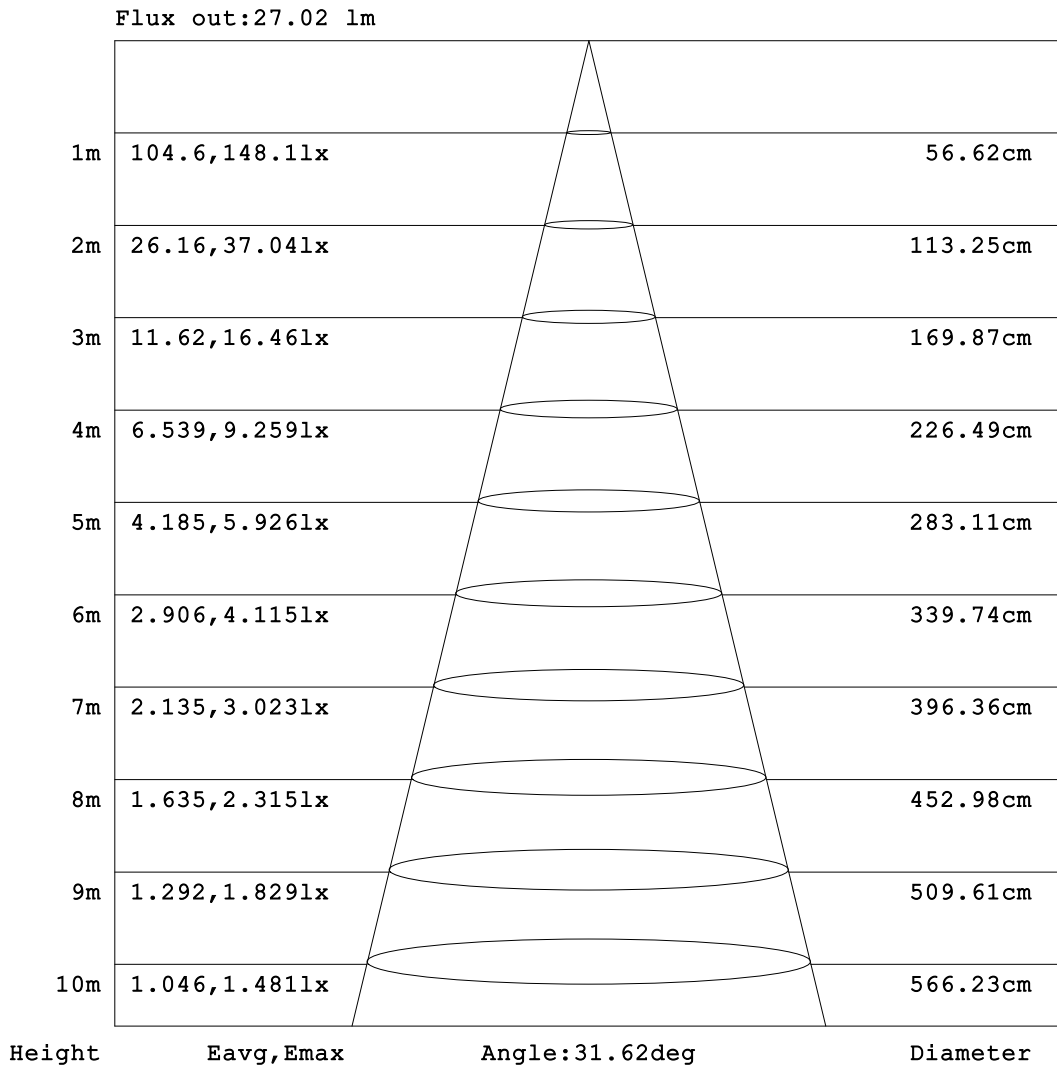


C Range: 0 - 360DEG
 C Interval: 15.0DEG
 Test Speed: HIGH
 Temperature:25.3°C
 Operators:DAMIN
 Test Date:2024-11-25

γ Range: 0 - 90DEG
 γ Interval: 1.0DEG
 Test System:EVERFINE GO-2000B_V1 SYSTEM V2.00.473
 Humidity:65.0%
 Test Distance:9.401m [K=1.0000]
 Remarks:

AAI Figure

Test:U:230.41V I:0.0142A P:1.3568W PF:0.4140 Freq:50.00Hz Lamp Flux:39.6296x1 lm		
NAME:	TYPE:	WEIGHT:
SPEC.: 3000K	DIM.:	SERIAL No.:
MFR.: EVERFINE	SUR.:	Shielding Angle:



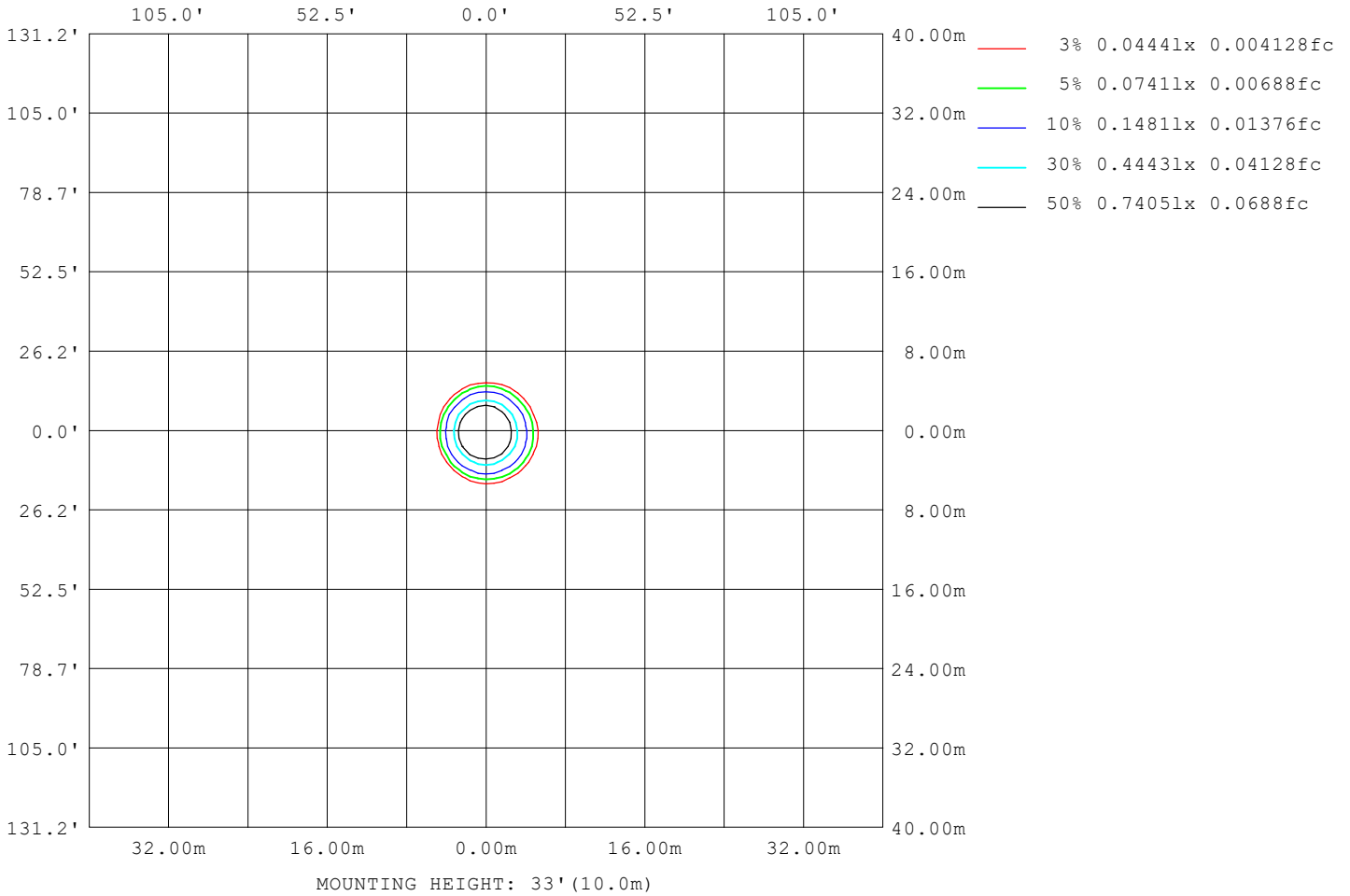
Note: The Curves indicate the illuminated area and the average illumination when the luminaire is at different distance.

C Range: 0 - 360DEG
C Interval: 15.0DEG
Test Speed: HIGH
Temperature:25.3°C
Operators:DAMIN
Test Date:2024-11-25

γ Range: 0 - 90DEG
γ Interval: 1.0DEG
Test System:EVERFINE GO-2000B_V1 SYSTEM V2.00.473
Humidity:65.0%
Test Distance:9.401m [K=1.0000]
Remarks:

ISOLUX DIAGRAM

Test:U:230.41V I:0.0142A P:1.3568W PF:0.4140 Freq:50.00Hz Lamp Flux:39.6296x1 lm		
NAME:	TYPE:	WEIGHT:
SPEC.: 3000K	DIM.:	SERIAL No.:
MFR.: EVERFINE	SUR.:	Shielding Angle:



C Range: 0 - 360DEG
 C Interval: 15.0DEG
 Test Speed: HIGH
 Temperature:25.3°C
 Operators:DAMIN
 Test Date:2024-11-25

γ Range: 0 - 90DEG
 γ Interval: 1.0DEG
 Test System:EVERFINE GO-2000B_V1 SYSTEM V2.00.473
 Humidity:65.0%
 Test Distance:9.401m [K=1.0000]
 Remarks:

LED Avg.L Report

Test:U:230.41V I:0.0142A P:1.3568W PF:0.4140 Freq:50.00Hz Lamp Flux:39.6296x1 lm		
NAME:	TYPE:	WEIGHT:
SPEC.: 3000K	DIM.:	SERIAL No.:
MFR.: EVERFINE	SUR.:	Shielding Angle:

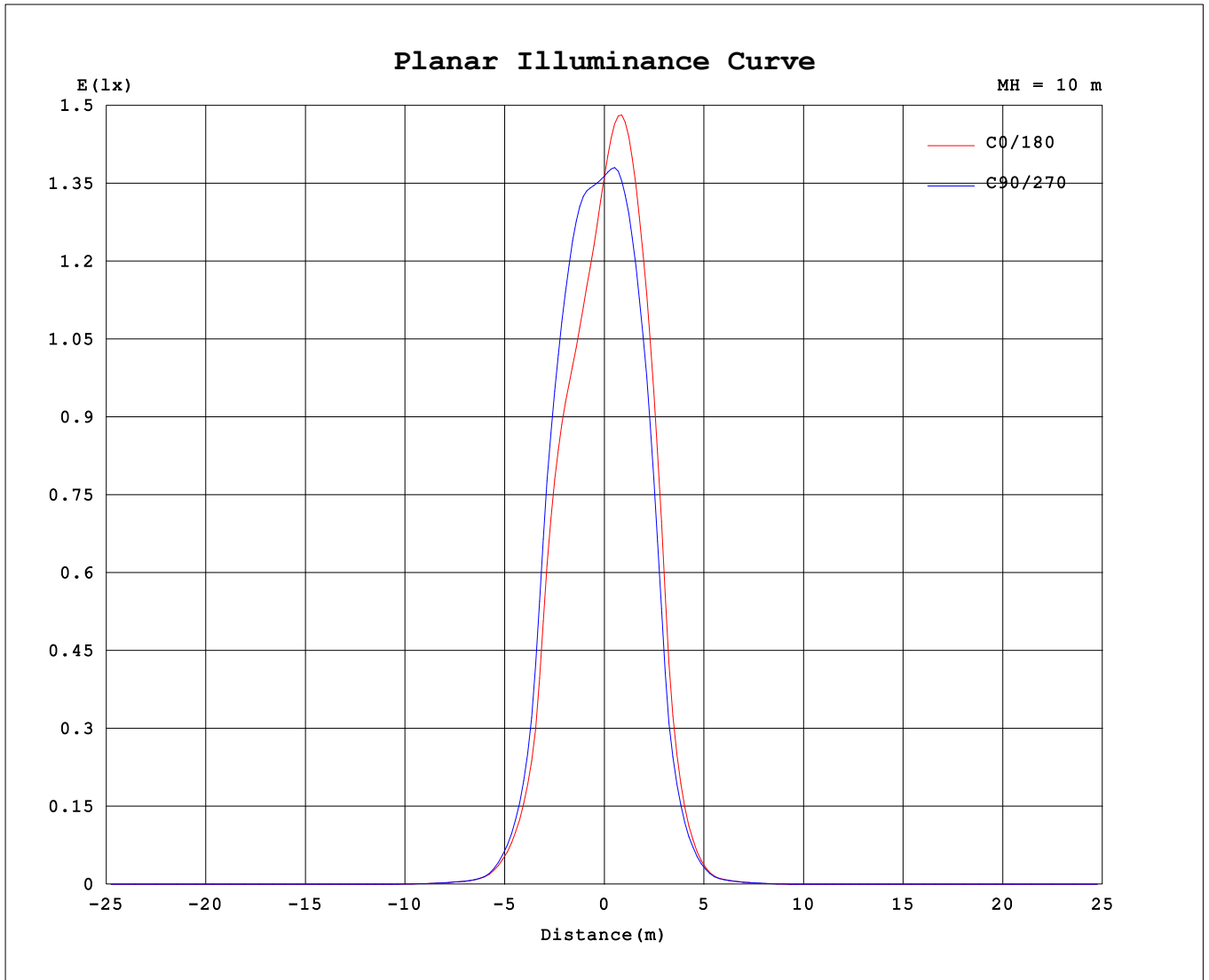
AvgL	cd/m2
L_0~180 (65) av	0
L_0~180 (75) av	0
L_0~180 (85) av	0
L_90~270 (65) av	0
L_90~270 (75) av	0
L_90~270 (85) av	0
L_45 (65) av	0
L_45 (75) av	0
L_45 (85) av	0

Standard: GB/T 29293-2012

C Range: 0 - 360DEG
 C Interval: 15.0DEG
 Test Speed: HIGH
 Temperature:25.3°C
 Operators:DAMIN
 Test Date:2024-11-25

γ Range: 0 - 90DEG
 γ Interval: 1.0DEG
 Test System:EVERFINE GO-2000B_V1 SYSTEM V2.00.473
 Humidity:65.0%
 Test Distance:9.401m [K=1.0000]
 Remarks:

Planar Illuminance Curve



C Range: 0 - 360DEG
 C Interval: 15.0DEG
 Test Speed: HIGH
 Temperature: 25.3°C
 Operators: DAMIN
 Test Date: 2024-11-25

γ Range: 0 - 90DEG
 γ Interval: 1.0DEG
 Test System: EVERFINE GO-2000B_V1 SYSTEM V2.00.473
 Humidity: 65.0%
 Test Distance: 9.401m [K=1.0000]
 Remarks:

LUMINOUS DISTRIBUTION INTENSITY DATA

Test:U:230.41V I:0.0142A P:1.3568W PF:0.4140 Freq:50.00Hz Lamp Flux:39.6296x1 lm		
NAME:	TYPE:	WEIGHT:
SPEC.: 3000K	DIM.:	SERIAL No.:
MFR.: EVERFINE	SUR.:	Shielding Angle:

Table--1

UNIT: cd

C (DEG) \ γ (DEG)	0	15	30	45	60	75	90	105	120	135	150	165	180	195	210	225	240	255	270
0	136	136	136	136	136	136	136	136	136	136	136	136	136	136	136	136	136	136	136
5	117	117	120	123	127	131	135	139	143	146	148	150	150	149	148	145	143	140	137
10	101	103	108	113	117	121	125	129	133	136	136	137	135	132	130	126	123	120	118
15	78.3	82.1	84.7	88.9	91.7	95.0	96.4	98.9	98.5	99.4	96.5	96.2	92.2	86.9	84.4	78.7	76.6	72.8	73.3
20	28.6	31.9	33.5	36.5	37.2	39.2	38.7	39.7	37.7	36.9	33.4	32.4	30.3	27.8	26.7	24.5	24.1	22.9	23.3
25	10.7	11.9	12.5	13.2	13.1	13.5	13.0	12.9	12.0	11.3	9.90	9.40	8.51	7.69	7.57	7.09	7.17	6.92	7.21
30	3.00	3.39	3.42	3.70	3.54	3.59	3.27	3.23	2.71	2.47	2.14	1.99	1.83	1.74	1.69	1.67	1.69	1.69	1.74
35	1.09	1.09	1.18	1.16	1.21	1.15	1.15	1.05	1.03	0.93	0.91	0.81	0.75	0.76	0.70	0.75	0.72	0.79	0.78
40	0.56	0.52	0.59	0.54	0.58	0.52	0.54	0.44	0.46	0.37	0.38	0.31	0.26	0.29	0.23	0.29	0.25	0.32	0.29
45	0.20	0.15	0.22	0.15	0.21	0.13	0.18	0.10	0.15	0.07	0.12	0.04	0.01	0.07	0.01	0.07	0.01	0.08	0.03
50	0.04	0.00	0.04	0.00	0.04	0.00	0.03	0.00	0.02	0.00	0.00	0.00	0.00	0.00	0.00	0.00	0.00	0.00	0.00
55	0.00	0.00	0.00	0.00	0.00	0.00	0.00	0.00	0.00	0.00	0.00	0.00	0.00	0.00	0.00	0.00	0.00	0.00	0.00
60	0.00	0.00	0.00	0.00	0.00	0.00	0.00	0.00	0.00	0.00	0.00	0.00	0.00	0.00	0.00	0.00	0.00	0.00	0.00
65	0.00	0.00	0.00	0.00	0.00	0.00	0.00	0.00	0.00	0.00	0.00	0.00	0.00	0.00	0.00	0.00	0.00	0.00	0.00
70	0.00	0.00	0.00	0.00	0.00	0.00	0.00	0.00	0.00	0.00	0.00	0.00	0.00	0.00	0.00	0.00	0.00	0.00	0.00
75	0.00	0.00	0.00	0.00	0.00	0.00	0.00	0.00	0.00	0.00	0.00	0.00	0.00	0.00	0.00	0.00	0.00	0.00	0.00
80	0.00	0.00	0.00	0.00	0.00	0.00	0.00	0.00	0.00	0.00	0.00	0.00	0.00	0.00	0.00	0.00	0.00	0.00	0.00
85	0.00	0.00	0.00	0.00	0.00	0.00	0.00	0.00	0.00	0.00	0.00	0.00	0.00	0.00	0.00	0.00	0.00	0.00	0.00
90	0.00	0.00	0.00	0.00	0.00	0.00	0.00	0.00	0.00	0.00	0.00	0.00	0.00	0.00	0.00	0.00	0.00	0.00	0.00

C Range: 0 - 360DEG
 C Interval: 15.0DEG
 Test Speed: HIGH
 Temperature:25.3°C
 Operators:DAMIN
 Test Date:2024-11-25

γ Range: 0 - 90DEG
 γ Interval: 1.0DEG
 Test System:EVERFINE GO-2000B_V1 SYSTEM V2.00.473
 Humidity:65.0%
 Test Distance:9.401m [K=1.0000]
 Remarks:

LUMINOUS DISTRIBUTION INTENSITY DATA

Test:U:230.41V I:0.0142A P:1.3568W PF:0.4140 Freq:50.00Hz Lamp Flux:39.6296x1 lm		
NAME:	TYPE:	WEIGHT:
SPEC.: 3000K	DIM.:	SERIAL No.:
MFR.: EVERFINE	SUR.:	Shielding Angle:

Table--2

UNIT: cd

C (DEG) \ γ (DEG)	285	300	315	330	345														
0	136	136	136	136	136														
5	133	129	125	121	118														
10	114	111	107	104	102														
15	71.7	73.0	72.2	74.3	75.6														
20	23.1	23.9	23.8	25.0	26.1														
25	7.39	8.02	8.23	8.92	9.49														
30	1.82	2.00	2.15	2.38	2.59														
35	0.86	0.84	0.94	0.93	1.02														
40	0.36	0.34	0.44	0.41	0.50														
45	0.10	0.05	0.15	0.10	0.18														
50	0.00	0.00	0.02	0.00	0.02														
55	0.00	0.00	0.00	0.00	0.00														
60	0.00	0.00	0.00	0.00	0.00														
65	0.00	0.00	0.00	0.00	0.00														
70	0.00	0.00	0.00	0.00	0.00														
75	0.00	0.00	0.00	0.00	0.00														
80	0.00	0.00	0.00	0.00	0.00														
85	0.00	0.00	0.00	0.00	0.00														
90	0.00	0.00	0.00	0.00	0.00														

C Range: 0 - 360DEG
 C Interval: 15.0DEG
 Test Speed: HIGH
 Temperature:25.3°C
 Operators:DAMIN
 Test Date:2024-11-25

γ Range: 0 - 90DEG
 γ Interval: 1.0DEG
 Test System:EVERFINE GO-2000B_V1 SYSTEM V2.00.473
 Humidity:65.0%
 Test Distance:9.401m [K=1.0000]
 Remarks: