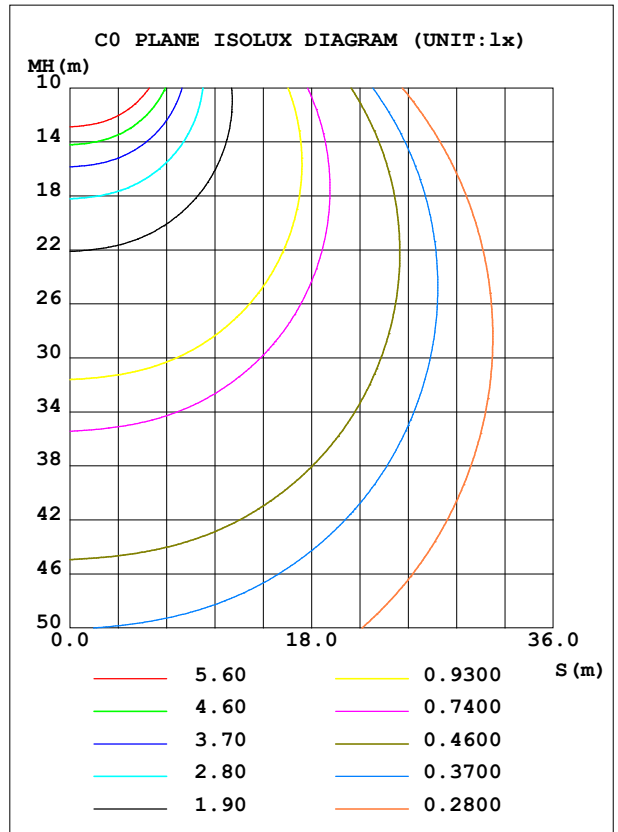
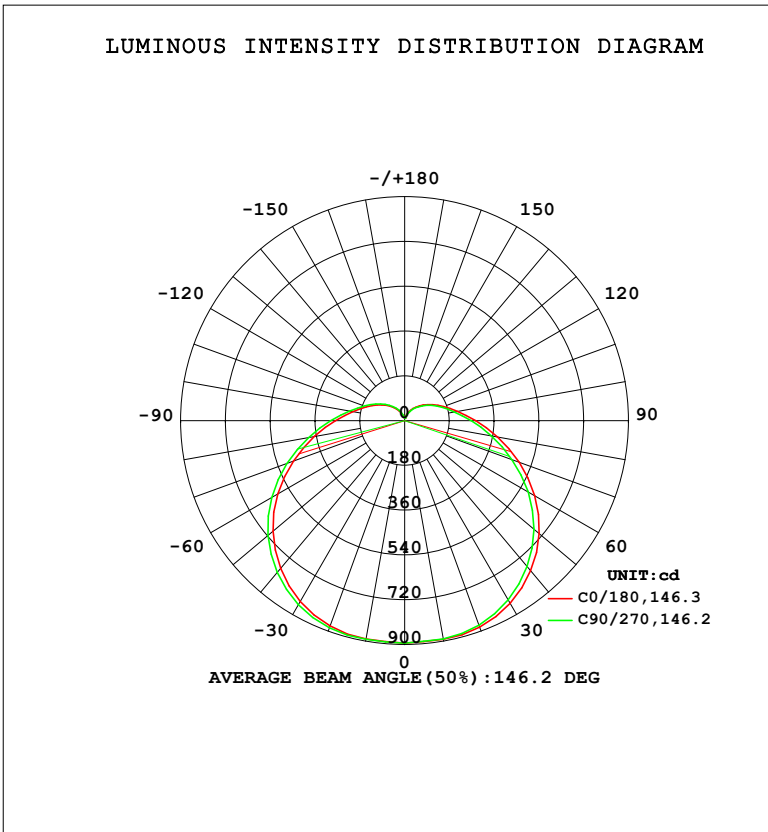


LUMINAIRE PHOTOMETRIC TEST REPORT

Test:U:220.23V I:0.3755A P:41.152W PF:0.4976 Freq:50.00Hz Lamp Flux:4588.57x1 lm		
NAME: 球泡	TYPE:	WEIGHT:
SPEC.:	DIM.:	SERIAL No.:
MFR.: EVERFINE	SUR.: 1	Shielding Angle:

DATA OF LAMP		PHOTOMETRIC DATA				Eff: 111.50 lm/W
MODEL	CF18	I _{max} (cd)	893.9	S/MH (C0/180)	1.40	
NOMINAL POWER (W)	45	LOR (%)	100.0	S/MH (C90/270)	1.43	
RATED VOLTAGE (V)	220	TOTAL FLUX (lm)	4588.6	η UP, DN (C0-180)	9.0, 40.2	
NOMINAL FLUX (lm)	4588.57	CIE CLASS	SEMI-D.	η UP, DN (C180-360)	9.5, 41.4	
LAMPS INSIDE	1	η up (%)	18.4	CIBSE SHR NOM	1.50	
TEST VOLTAGE (V)	219.5	η down (%)	81.6	CIBSE SHR MAX	1.55	



C Range: 0 - 360DEG
 C Interval: 22.5DEG
 Test Speed: HIGH
 Temperature: 25.3°C
 Operators: DAMIN
 Test Date: 2023-11-09

γ Range: 0 - 180DEG
 γ Interval: 5.0DEG
 Test System: EVERFINE GO-2000B_V1 SYSTEM V2.00.473
 Humidity: 65.0%
 Test Distance: 9.401m [K=1.0000]
 Remarks:

ZONAL FLUX DIAGRAM

ZONAL FLUX DIAGRAM:

γ	C0	C45	C90	C135	C180	C225	C270	C315	γ	Φ zone	Φ total	%lum, lamp
10	892.7	892.0	890.5	889.6	891.4	891.3	891.9	892.1	0- 10	85.09	85.09	1.85,1.85
20	883.3	878.7	874.6	873.0	878.0	882.1	885.8	885.9	10- 20	251.4	336.5	7.33,7.33
30	848.4	839.9	832.0	830.1	838.8	847.7	853.9	853.8	20- 30	399.1	735.6	16,16
40	787.8	776.5	765.8	763.9	775.9	787.9	796.9	796.7	30- 40	510.5	1246	27.2,27.2
50	705.4	691.1	678.2	677.3	691.4	706.4	716.8	717.0	40- 50	573.2	1819	39.6,39.6
60	604.1	587.5	573.1	572.9	588.5	605.5	617.4	617.3	50- 60	580.5	2400	52.3,52.3
70	489.9	473.2	459.5	459.9	475.3	492.3	504.3	503.9	60- 70	534.7	2935	64,64
80	379.3	365.0	353.7	354.3	368.3	382.9	392.8	392.5	70- 80	451.7	3386	73.8,73.8
90	286.3	275.5	267.5	268.3	279.0	290.1	298.0	297.5	80- 90	356.7	3743	81.6,81.6
100	216.3	208.9	203.5	204.2	211.8	219.3	225.0	224.5	90-100	269.6	4013	87.4,87.4
110	167.5	162.6	159.0	159.6	164.5	169.6	173.5	173.2	100-110	200.3	4213	91.8,91.8
120	130.3	126.3	123.7	124.0	127.8	131.9	135.1	134.7	110-120	146.4	4359	95,95
130	98.93	95.66	93.44	93.72	96.73	100.2	102.9	102.6	120-130	101.9	4461	97.2,97.2
140	71.90	69.15	67.22	67.35	69.88	72.90	75.22	74.97	130-140	65.54	4527	98.7,98.7
150	48.52	46.01	44.22	44.27	46.55	49.26	51.21	51.06	140-150	37.39	4564	99.5,99.5
160	28.57	26.40	24.88	24.94	26.64	29.02	30.61	30.42	150-160	17.54	4582	99.8,99.8
170	14.04	12.89	12.10	12.12	12.92	14.32	15.25	15.08	160-170	5.867	4587	100,100
180	10.34	10.38	10.59	10.84	10.52	10.48	10.66	10.85	170-180	1.129	4589	100,100
DEG	LUMINOUS INTENSITY:cd									UNIT:lm		

Conical surface Flux(90deg): 1528.3 lm

%lum = 33.3%

%lamp = 33.3%

Conical surface Flux(130deg): 2675.9 lm

%lum = 58.3%

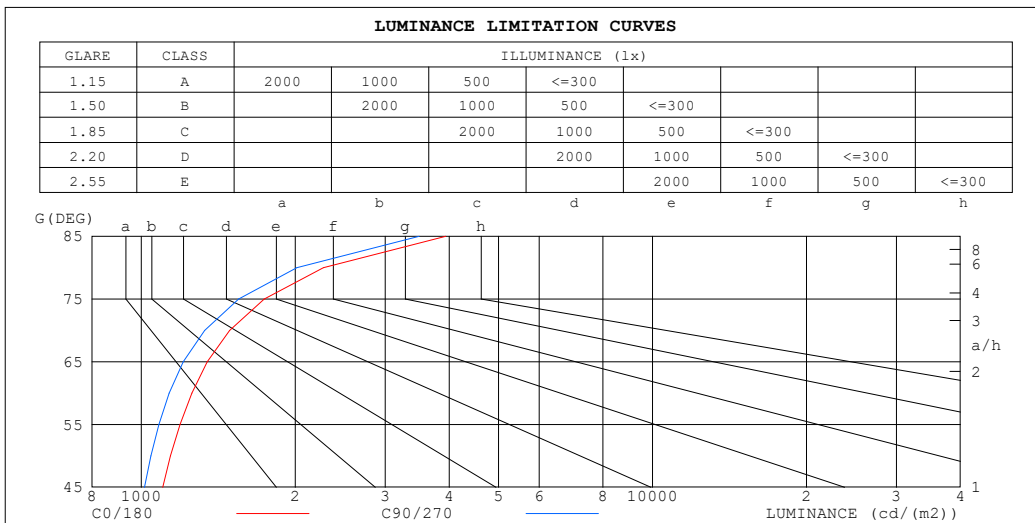
%lamp = 58.3%

C Range: 0 - 360DEG
 C Interval: 22.5DEG
 Test Speed: HIGH
 Temperature:25.3°C
 Operators:DAMIN
 Test Date:2023-11-09

γ Range: 0 - 180DEG
 γ Interval: 5.0DEG
 Test System:EVERFINE GO-2000B_V1 SYSTEM V2.00.473
 Humidity:65.0%
 Test Distance:9.401m [K=1.0000]
 Remarks:

LUMINANCE LIMITATION CURVES

Test:U:220.23V I:0.3755A P:41.152W PF:0.4976 Freq:50.00Hz Lamp Flux:4588.57x1 lm		
NAME: 球泡	TYPE:	WEIGHT:
SPEC.:	DIM.:	SERIAL No.:
MFR.: EVERFINE	SUR.: 1	Shielding Angle:



LUMINANCE cd/(m2)		
G (DEG)	C0/180	C90/270
85	3939	3496
80	2270	2015
75	1738	1549
70	1489	1329
65	1346	1208
60	1256	1134
55	1191	1083
50	1141	1044
45	1101	1014

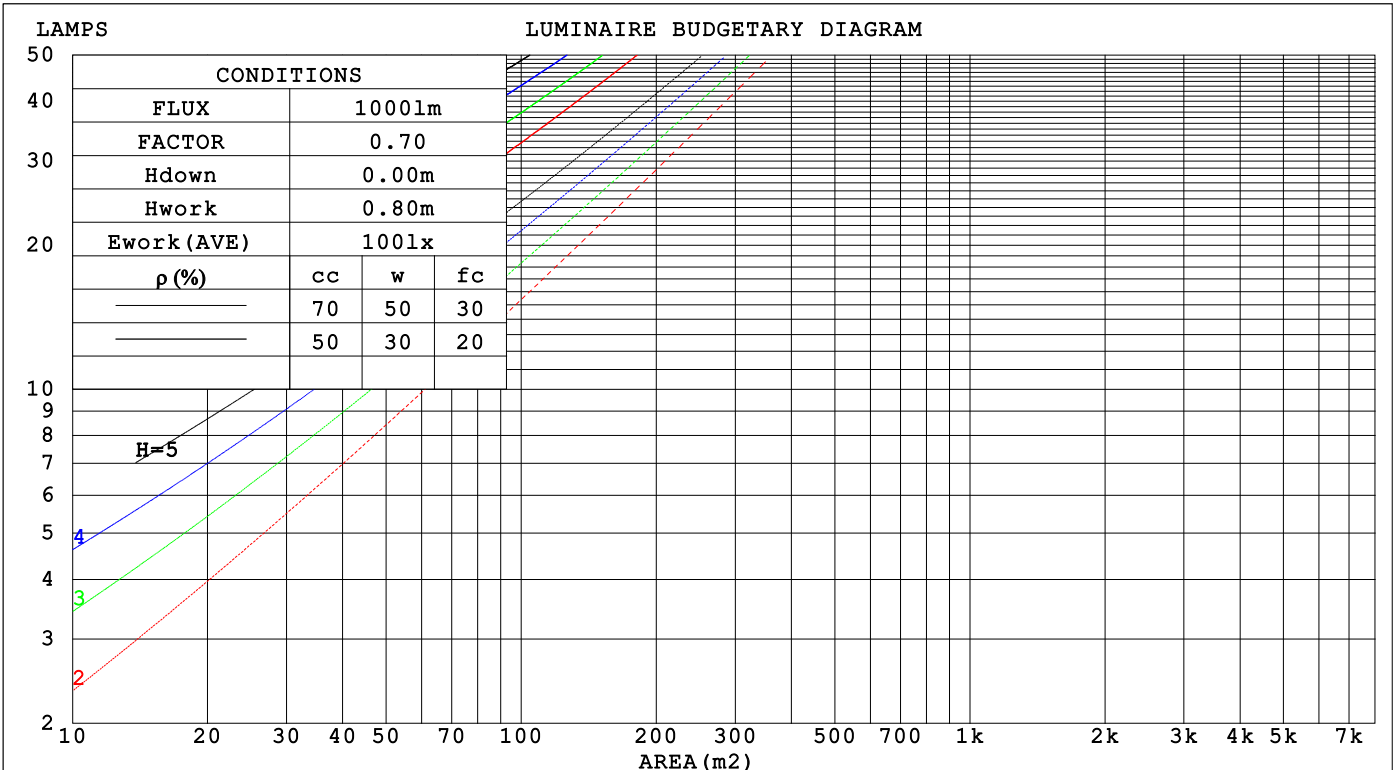
C Range: 0 - 360DEG
 C Interval: 22.5DEG
 Test Speed: HIGH
 Temperature:25.3°C
 Operators:DAMIN
 Test Date:2023-11-09

γ Range: 0 - 180DEG
 γ Interval: 5.0DEG
 Test System:EVERFINE GO-2000B_V1 SYSTEM V2.00.473
 Humidity:65.0%
 Test Distance:9.401m [K=1.0000]
 Remarks:

CU AND LUMINAIRE BUDGETARY ESTIMATE DIAGRAM

Test:U:220.23V I:0.3755A P:41.152W PF:0.4976 Freq:50.00Hz Lamp Flux:4588.57x1 lm		
NAME: 球泡	TYPE:	WEIGHT:
SPEC.:	DIM.:	SERIAL No.:
MFR.: EVERFINE	SUR.: 1	Shielding Angle:

pcc	80%			70%			50%			30%			10%			0
pw	50%	30%	10%	50%	30%	10%	50%	30%	10%	50%	30%	10%	50%	30%	10%	0
pfc	20%			20%			20%			20%			20%			0
RCR	RCR:Room Cavity Ratio						Coefficients of Utilization(CU)									
0.0	1.15	1.15	1.15	1.10	1.10	1.10	1.01	1.01	1.01	.93	.93	.93	.85	.85	.85	.82
1.0	.95	.90	.85	.91	.86	.82	.83	.79	.76	.76	.73	.70	.70	.67	.65	.61
2.0	.81	.73	.66	.78	.70	.64	.71	.65	.60	.65	.60	.56	.59	.55	.52	.49
3.0	.70	.61	.54	.67	.59	.52	.61	.55	.49	.56	.50	.46	.51	.47	.43	.39
4.0	.62	.52	.45	.59	.50	.43	.54	.47	.41	.49	.43	.38	.45	.40	.36	.33
5.0	.54	.45	.38	.52	.43	.37	.48	.40	.35	.44	.38	.33	.40	.35	.31	.28
6.0	.49	.39	.32	.47	.38	.32	.43	.35	.30	.40	.33	.28	.36	.31	.26	.24
7.0	.44	.35	.28	.42	.34	.28	.39	.31	.26	.36	.29	.25	.33	.27	.23	.21
8.0	.40	.31	.25	.38	.30	.24	.35	.28	.23	.33	.26	.22	.30	.25	.21	.18
9.0	.36	.28	.22	.35	.27	.22	.32	.25	.21	.30	.24	.20	.28	.22	.18	.16
10.0	.33	.25	.20	.32	.25	.19	.30	.23	.18	.28	.22	.18	.26	.20	.17	.15



C Range: 0 - 360DEG
 C Interval: 22.5DEG
 Test Speed: HIGH
 Temperature:25.3°C
 Operators:DAMIN
 Test Date:2023-11-09

γ Range: 0 - 180DEG
 γ Interval: 5.0DEG
 Test System:EVERFINE GO-2000B_V1 SYSTEM V2.00.473
 Humidity:65.0%
 Test Distance:9.401m [K=1.0000]
 Remarks:

WEC AND CCEC

Test:U:220.23V I:0.3755A P:41.152W PF:0.4976 Freq:50.00Hz								
Lamp Flux:4588.57x1 lm								
NAME: 球泡			TYPE:			WEIGHT:		
SPEC.:			DIM.:			SERIAL No.:		
MFR.: EVERFINE			SUR.: 1			Shielding Angle:		

ρ_{CC}	80%			70%			50%			30%			10%			0
ρ_w	50%	30%	10%	50%	30%	10%	50%	30%	10%	50%	30%	10%	50%	30%	10%	0
ρ_{fc}	20%			20%			20%			20%			20%			0
RCR	RCR:Room Cavity Ratio						Wall Exitance Coefficients (WEC)									
0.0																
1.0	.392	.223	.071	.379	.216	.069	.355	.204	.065	.333	.192	.062	.312	.181	.058	
2.0	.338	.185	.057	.327	.180	.055	.305	.170	.053	.285	.160	.050	.266	.151	.047	
3.0	.300	.160	.048	.289	.155	.047	.270	.146	.044	.251	.138	.042	.235	.130	.040	
4.0	.270	.140	.041	.260	.136	.040	.242	.128	.038	.226	.121	.037	.210	.114	.035	
5.0	.245	.125	.036	.236	.121	.035	.220	.115	.034	.205	.108	.032	.191	.102	.031	
6.0	.224	.112	.032	.216	.109	.031	.201	.103	.030	.188	.097	.029	.175	.092	.027	
7.0	.206	.102	.029	.199	.099	.028	.186	.094	.027	.173	.089	.026	.161	.084	.025	
8.0	.191	.094	.026	.185	.091	.026	.172	.086	.025	.161	.081	.023	.150	.077	.022	
9.0	.178	.086	.024	.172	.084	.024	.161	.079	.023	.150	.075	.022	.140	.071	.021	
10.0	.167	.080	.022	.161	.078	.022	.151	.074	.021	.141	.070	.020	.131	.066	.019	

ρ_{CC}	80%			70%			50%			30%			10%			0
ρ_w	50%	30%	10%	50%	30%	10%	50%	30%	10%	50%	30%	10%	50%	30%	10%	0
ρ_{fc}	20%			20%			20%			20%			20%			0
RCR	RCR:Room Cavity Ratio						Ceiling Cavity Exitance Coefficients (CCEC)									
0.0	.331	.331	.331	.283	.283	.283	.193	.193	.193	.111	.111	.111	.035	.035	.035	
1.0	.328	.297	.269	.280	.255	.232	.192	.175	.160	.110	.101	.093	.035	.033	.030	
2.0	.321	.274	.235	.275	.236	.203	.188	.163	.142	.109	.095	.083	.035	.031	.027	
3.0	.314	.258	.213	.269	.222	.185	.185	.154	.130	.107	.090	.076	.034	.029	.025	
4.0	.306	.245	.199	.262	.212	.173	.180	.148	.122	.104	.087	.072	.034	.028	.024	
5.0	.298	.236	.189	.256	.204	.165	.176	.142	.116	.102	.084	.069	.033	.027	.023	
6.0	.291	.228	.182	.250	.197	.159	.172	.138	.112	.100	.081	.067	.032	.027	.022	
7.0	.284	.221	.177	.244	.192	.155	.168	.134	.110	.098	.079	.065	.032	.026	.022	
8.0	.277	.216	.173	.238	.187	.151	.165	.131	.107	.096	.077	.064	.031	.025	.021	
9.0	.270	.211	.170	.233	.183	.149	.161	.129	.106	.094	.076	.063	.030	.025	.021	
10.0	.265	.207	.168	.228	.179	.147	.158	.126	.104	.092	.075	.062	.030	.025	.021	

C Range: 0 - 360DEG
 C Interval: 22.5DEG
 Test Speed: HIGH
 Temperature:25.3°C
 Operators:DAMIN
 Test Date:2023-11-09

γ Range: 0 - 180DEG
 γ Interval: 5.0DEG
 Test System:EVERFINE GO-2000B_V1 SYSTEM V2.00.473
 Humidity:65.0%
 Test Distance:9.401m [K=1.0000]
 Remarks:

UGR(Unified Glare Rating) Table

Test:U:220.23V I:0.3755A P:41.152W PF:0.4976 Freq:50.00Hz										
Lamp Flux:4588.57x1 lm										
NAME: 球泡			TYPE:				WEIGHT:			
SPEC.:			DIM.:				SERIAL No.:			
MFR.: EVERFINE			SUR.: 1				Shielding Angle:			
ceiling/cavity	0.7	0.7	0.5	0.5	0.3	0.7	0.7	0.5	0.5	0.3
walls	0.5	0.3	0.5	0.3	0.3	0.5	0.3	0.5	0.3	0.3
working plane	0.2	0.2	0.2	0.2	0.2	0.2	0.2	0.2	0.2	0.2
Room dimensions	Viewed crosswise					Viewed endwise				
x = 2H y = 2H	7.2	8.6	7.7	9.1	9.6	6.8	8.1	7.3	8.7	9.2
3H	9.5	10.8	10.0	11.3	11.9	9.0	10.3	9.5	10.8	11.4
4H	10.7	12.0	11.3	12.5	13.2	10.2	11.4	10.7	12.0	12.6
6H	12.1	13.2	12.7	13.8	14.5	11.5	12.6	12.1	13.2	13.9
8H	12.8	13.9	13.4	14.5	15.2	12.2	13.3	12.8	13.9	14.6
12H	13.7	14.7	14.3	15.3	16.0	13.0	14.1	13.6	14.7	15.4
4H 2H	7.9	9.1	8.4	9.6	10.3	7.6	8.8	8.1	9.3	10.0
3H	10.4	11.5	11.0	12.1	12.8	10.0	11.1	10.6	11.7	12.4
4H	11.8	12.8	12.4	13.4	14.1	11.4	12.3	12.0	13.0	13.7
6H	13.3	14.2	14.0	14.9	15.6	12.8	13.7	13.5	14.4	15.1
8H	14.2	15.0	14.9	15.7	16.4	13.6	14.5	14.3	15.1	15.9
12H	15.2	15.9	15.9	16.6	17.4	14.6	15.3	15.2	16.0	16.8
8H 4H	12.3	13.1	13.0	13.8	14.5	11.9	12.7	12.6	13.4	14.2
6H	14.1	14.8	14.8	15.5	16.3	13.7	14.4	14.4	15.1	15.9
8H	15.1	15.8	15.8	16.5	17.3	14.7	15.3	15.4	16.0	16.8
12H	16.3	16.9	17.1	17.6	18.5	15.8	16.4	16.6	17.1	18.0
12H 4H	12.4	13.1	13.1	13.8	14.6	12.0	12.8	12.7	13.5	14.3
6H	14.3	14.9	15.0	15.6	16.5	13.9	14.5	14.6	15.2	16.1
8H	15.5	16.0	16.2	16.7	17.6	15.0	15.6	15.7	16.3	17.2
Variations with the observer position at spacings(CIE Pub.117):										
S = 1.0H	+ 0.1 / - 0.1					+ 0.1 / - 0.1				
1.5H	+ 0.2 / - 0.3					+ 0.2 / - 0.3				
2.0H	+ 0.2 / - 0.3					+ 0.2 / - 0.4				

CIE Pub.117, 4589 lm Total Lamp Luminous Flux Correct (8log(F/F0) = 5.3)
Area: 1 m2

C Range: 0 - 360DEG
C Interval: 22.5DEG
Test Speed: HIGH
Temperature:25.3°C
Operators:DAMIN
Test Date:2023-11-09

γ Range: 0 - 180DEG
γ Interval: 5.0DEG
Test System:EVERFINE GO-2000B_V1 SYSTEM V2.00.473
Humidity:65.0%
Test Distance:9.401m [K=1.0000]
Remarks:

UTILIZATION FACTORS TABLE

Test:U:220.23V I:0.3755A P:41.152W PF:0.4976 Freq:50.00Hz Lamp Flux:4588.57x1 lm		
NAME: 球泡	TYPE:	WEIGHT:
SPEC.:	DIM.:	SERIAL No.:
MFR.: EVERFINE	SUR.: 1	Shielding Angle:

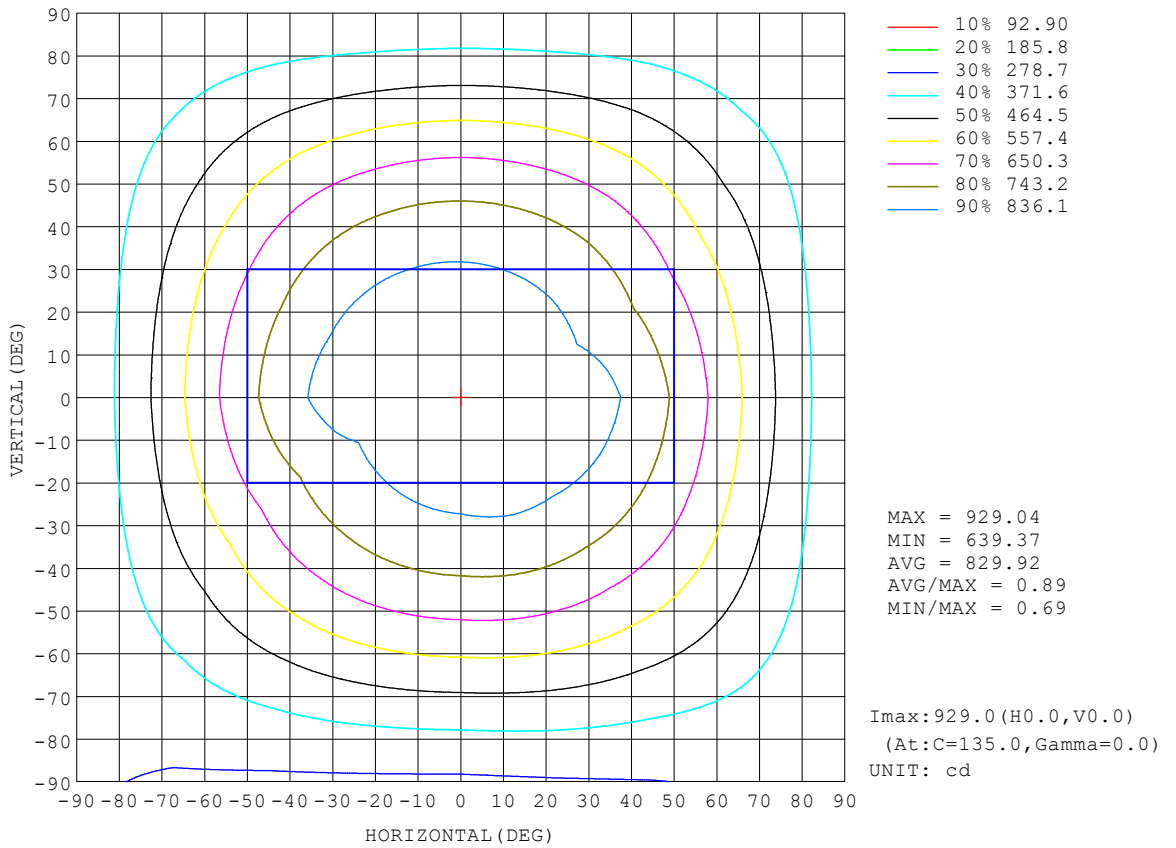
REFLECTANCE										
Ceiling	0.8	0.8	0.8	0.7	0.7	0.7	0.5	0.5	0.5	0
Walls	0.7	0.5	0.3	0.7	0.5	0.3	0.7	0.5	0.3	0
Working plane	0.2	0.2	0.2	0.2	0.2	0.2	0.2	0.2	0.2	0
ROOM INDEX	UTILIZATION FACTORS (PERCENT) $k(RI) \times RCR = 5$									
k = 0.60	47	34	27	46	34	27	44	33	26	19
0.80	56	43	35	54	42	34	52	41	33	25
1.00	64	51	42	62	50	42	58	50	40	32
1.25	71	58	49	68	57	48	64	54	47	37
1.50	76	63	55	73	62	54	68	59	52	41
2.00	83	72	64	80	70	62	74	66	59	47
2.50	88	77	69	84	75	68	78	70	64	51
3.00	92	82	75	88	79	72	81	74	69	55
4.00	96	88	82	92	85	79	85	79	74	60
5.00	99	92	86	95	89	84	88	83	78	63
ROOM INDEX	UF(total)									Direct
According to DIN EN 13032-2 2004			Suspended				SHRNOM = 1.25			

C Range: 0 - 360DEG
 C Interval: 22.5DEG
 Test Speed: HIGH
 Temperature:25.3°C
 Operators:DAMIN
 Test Date:2023-11-09

γ Range: 0 - 180DEG
 γ Interval: 5.0DEG
 Test System:EVERFINE GO-2000B_V1 SYSTEM V2.00.473
 Humidity:65.0%
 Test Distance:9.401m [K=1.0000]
 Remarks:

ISOCANDELA DIAGRAM

Test:U:220.23V I:0.3755A P:41.152W PF:0.4976 Freq:50.00Hz Lamp Flux:4588.57x1 lm		
NAME: 球泡	TYPE:	WEIGHT:
SPEC.:	DIM.:	SERIAL No.:
MFR.: EVERFINE	SUR.: 1	Shielding Angle:

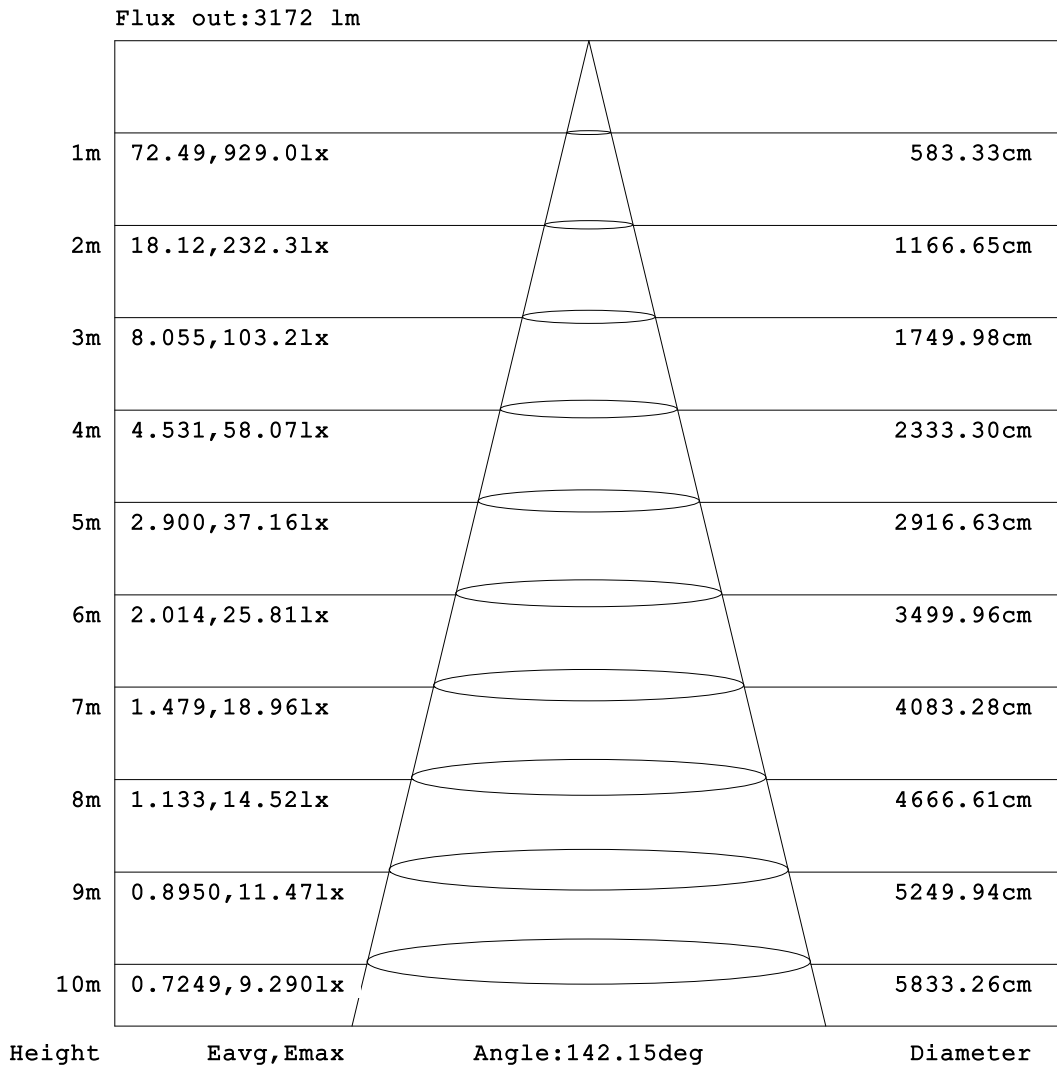


C Range: 0 - 360DEG
 C Interval: 22.5DEG
 Test Speed: HIGH
 Temperature:25.3°C
 Operators:DAMIN
 Test Date:2023-11-09

γ Range: 0 - 180DEG
 γ Interval: 5.0DEG
 Test System:EVERFINE GO-2000B_V1 SYSTEM V2.00.473
 Humidity:65.0%
 Test Distance:9.401m [K=1.0000]
 Remarks:

AAI Figure

Test:U:220.23V I:0.3755A P:41.152W PF:0.4976 Freq:50.00Hz Lamp Flux:4588.57x1 lm		
NAME: 球泡	TYPE:	WEIGHT:
SPEC.:	DIM.:	SERIAL No.:
MFR.: EVERFINE	SUR.: 1	Shielding Angle:



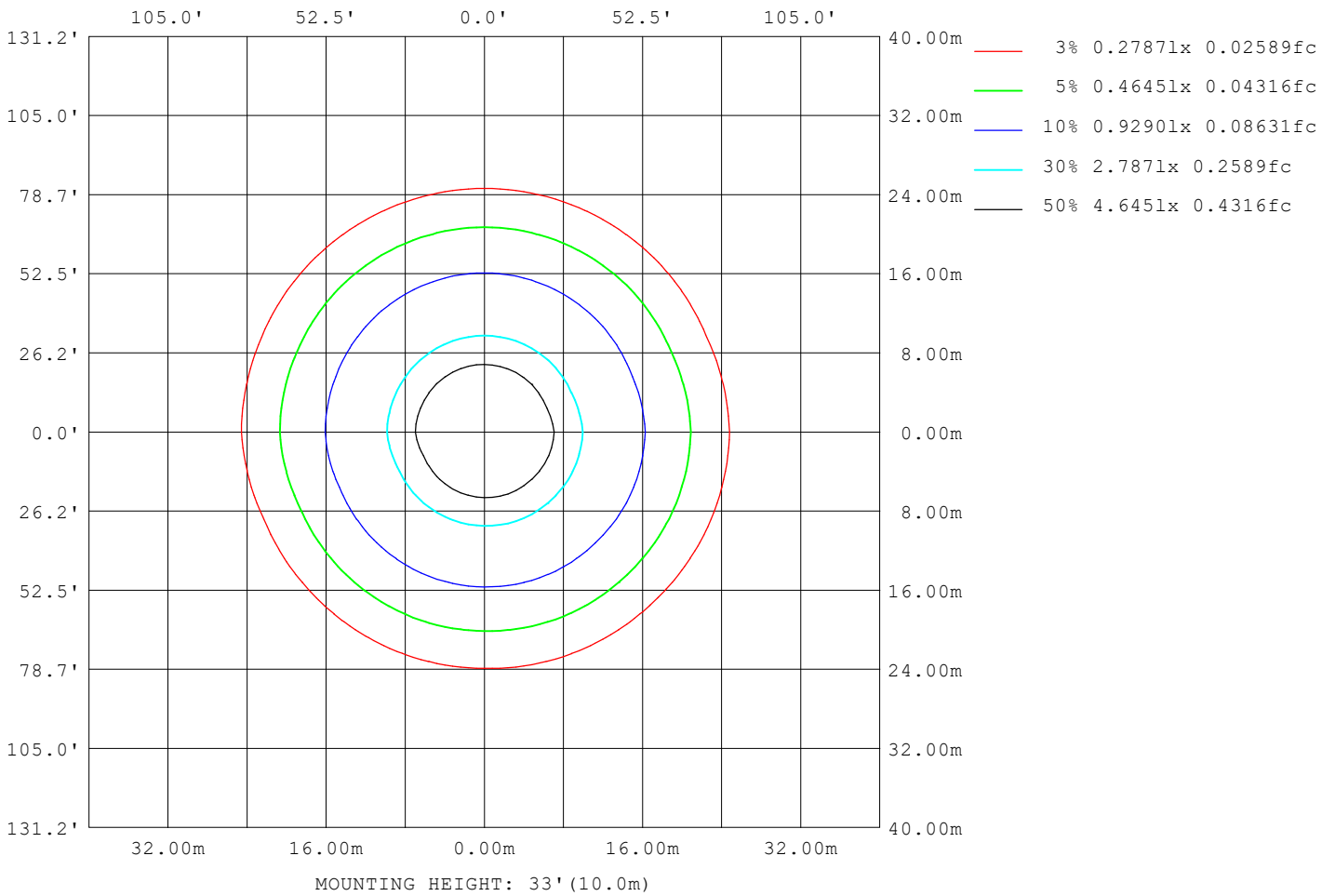
Note:The Curves indicate the illuminated area and the average illumination when the luminaire is at different distance.

C Range: 0 - 360DEG
C Interval: 22.5DEG
Test Speed: HIGH
Temperature:25.3°C
Operators:DAMIN
Test Date:2023-11-09

γ Range: 0 - 180DEG
γ Interval: 5.0DEG
Test System:EVERFINE GO-2000B_V1 SYSTEM V2.00.473
Humidity:65.0%
Test Distance:9.401m [K=1.0000]
Remarks:

ISOLUX DIAGRAM

Test:U:220.23V I:0.3755A P:41.152W PF:0.4976 Freq:50.00Hz Lamp Flux:4588.57x1 lm		
NAME: 球泡	TYPE:	WEIGHT:
SPEC.:	DIM.:	SERIAL No.:
MFR.: EVERFINE	SUR.: 1	Shielding Angle:



C Range: 0 - 360DEG
 C Interval: 22.5DEG
 Test Speed: HIGH
 Temperature:25.3°C
 Operators:DAMIN
 Test Date:2023-11-09

γ Range: 0 - 180DEG
 γ Interval: 5.0DEG
 Test System:EVERFINE GO-2000B_V1 SYSTEM V2.00.473
 Humidity:65.0%
 Test Distance:9.401m [K=1.0000]
 Remarks:

LED Avg.L Report

Test:U:220.23V I:0.3755A P:41.152W PF:0.4976 Freq:50.00Hz Lamp Flux:4588.57x1 lm		
NAME: 球泡	TYPE:	WEIGHT:
SPEC.:	DIM.:	SERIAL No.:
MFR.: EVERFINE	SUR.: 1	Shielding Angle:

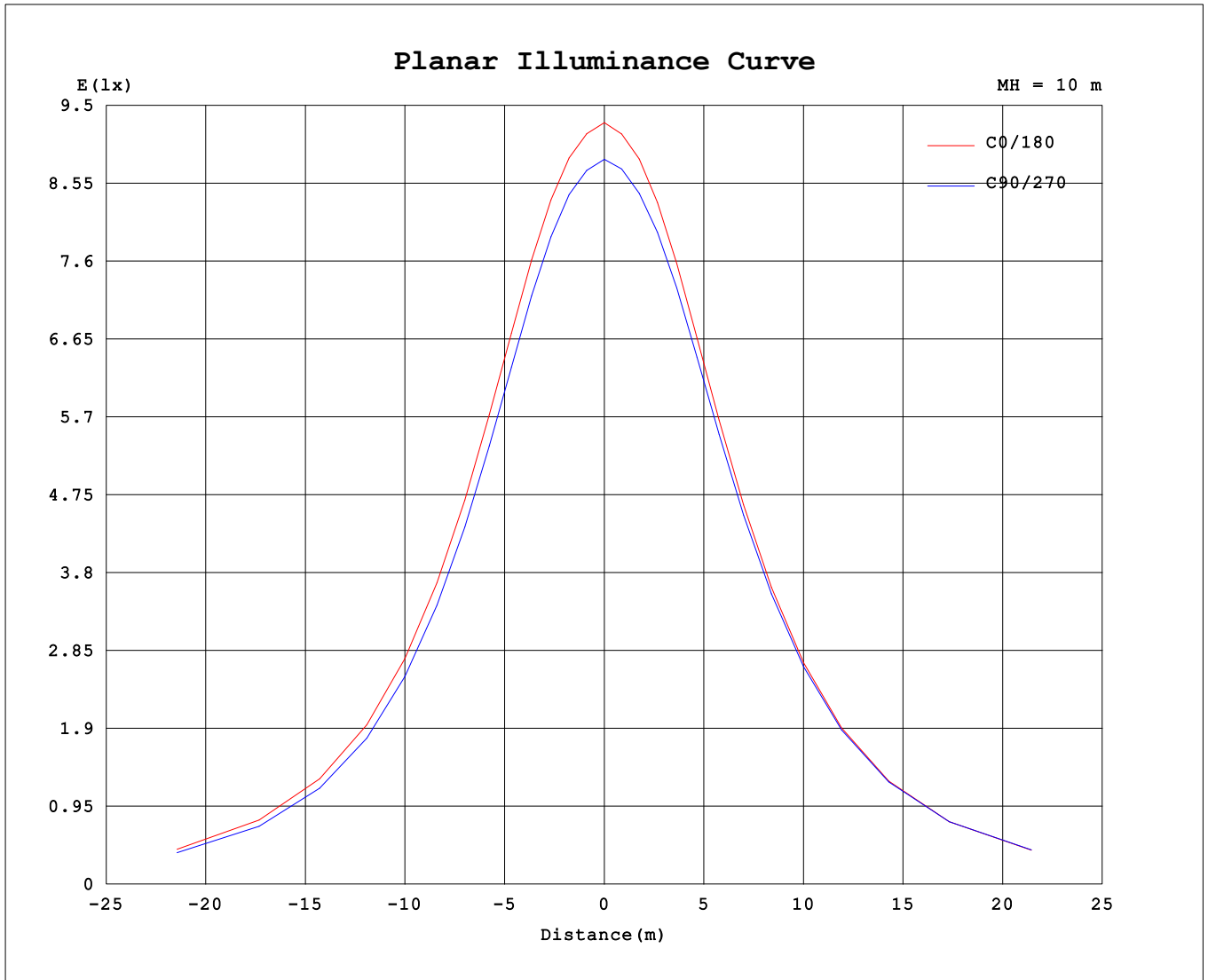
AvgL	cd/m2
L_0~180 (65) av	1277
L_0~180 (75) av	1648
L_0~180 (85) av	3738
L_90~270 (65) av	1275
L_90~270 (75) av	1647
L_90~270 (85) av	3736
L_45 (65) av	1276
L_45 (75) av	1647
L_45 (85) av	3739

Standard: GB/T 29293-2012

C Range: 0 - 360DEG
 C Interval: 22.5DEG
 Test Speed: HIGH
 Temperature:25.3°C
 Operators:DAMIN
 Test Date:2023-11-09

γ Range: 0 - 180DEG
 γ Interval: 5.0DEG
 Test System:EVERFINE GO-2000B_V1 SYSTEM V2.00.473
 Humidity:65.0%
 Test Distance:9.401m [K=1.0000]
 Remarks:

Planar Illuminance Curve



C Range: 0 - 360DEG
 C Interval: 22.5DEG
 Test Speed: HIGH
 Temperature: 25.3°C
 Operators: DAMIN
 Test Date: 2023-11-09

γ Range: 0 - 180DEG
 γ Interval: 5.0DEG
 Test System: EVERFINE GO-2000B_V1 SYSTEM V2.00.473
 Humidity: 65.0%
 Test Distance: 9.401m [K=1.0000]
 Remarks:

LUMINOUS DISTRIBUTION INTENSITY DATA

Test:U:220.23V I:0.3755A P:41.152W PF:0.4976 Freq:50.00Hz Lamp Flux:4588.57x1 lm		
NAME: 球泡	TYPE:	WEIGHT:
SPEC.:	DIM.:	SERIAL No.:
MFR.: EVERFINE	SUR.: 1	Shielding Angle:

Table--1

UNIT: cd

C (DEG) \ γ (DEG)	0	22.5	45	67.5	90	112.5	135	157.5	180	202.5	225	247.5	270	292.5	315	337.5			
0	894	894	894	894	894	894	894	894	894	894	894	894	894	894	894	894			
5	891	891	891	890	890	890	890	890	891	890	891	891	892	892	892	891			
10	893	893	892	891	890	890	890	890	891	891	891	891	892	892	892	893			
15	891	891	889	887	886	885	884	886	888	888	890	890	892	892	892	892			
20	883	883	879	877	875	874	873	875	878	879	882	884	886	886	886	885			
25	869	868	863	860	856	855	855	857	862	863	868	870	873	873	873	871			
30	848	846	840	837	832	831	830	834	839	841	848	849	854	854	854	852			
35	821	819	811	807	801	800	800	804	810	813	820	823	828	828	828	825			
40	788	785	777	772	766	764	764	769	776	779	788	791	797	797	797	793			
45	749	746	737	731	725	723	723	729	736	740	750	753	760	760	760	756			
50	705	702	691	686	678	677	677	684	691	696	706	710	717	717	717	713			
55	657	653	641	635	628	626	627	633	642	647	658	662	670	669	669	664			
60	604	599	588	581	573	572	573	580	589	594	606	610	617	617	617	612			
65	547	543	531	524	516	516	516	524	532	538	550	554	562	562	561	556			
70	490	485	473	467	460	459	460	467	475	481	492	497	504	504	504	498			
75	433	429	417	412	405	405	405	412	420	425	436	441	447	447	447	441			
80	379	376	365	361	354	354	354	362	368	373	383	387	393	393	392	387			
85	330	328	318	314	308	309	309	315	321	324	334	337	343	342	343	337			
90	286	284	275	273	268	268	268	274	279	281	290	292	298	297	297	292			
95	248	247	239	237	233	233	233	238	242	244	252	254	258	258	258	254			
100	216	215	209	207	204	204	204	208	212	213	219	221	225	224	224	221			
105	189	189	184	182	180	180	180	183	186	188	192	194	197	196	197	194			
110	167	167	163	161	159	159	160	162	164	165	170	171	174	173	173	171			
115	148	147	144	142	141	141	141	143	145	146	150	151	153	153	153	151			
120	130	129	126	125	124	124	124	126	128	128	132	133	135	135	135	133			
125	114	113	110	109	108	108	108	110	112	112	115	116	118	118	118	117			
130	98.9	98.3	95.7	94.8	93.4	93.4	93.7	95.2	96.7	97.4	100	101	103	103	103	101			
135	84.9	84.3	81.9	81.2	79.9	79.9	80.1	81.5	82.9	83.5	86.1	87.0	88.6	88.4	88.3	87.1			
140	71.9	71.3	69.1	68.4	67.2	67.2	67.3	68.6	69.9	70.6	72.9	73.9	75.2	75.1	75.0	73.9			
145	59.8	59.2	57.1	56.5	55.3	55.4	55.4	56.6	57.8	58.4	60.7	61.5	62.8	62.6	62.6	61.5			
150	48.5	47.9	46.0	45.3	44.2	44.2	44.3	45.4	46.5	47.2	49.3	50.0	51.2	51.0	51.1	49.9			
155	38.1	37.5	35.7	35.0	34.0	34.0	34.1	35.1	36.1	36.8	38.7	39.4	40.5	40.3	40.3	39.3			
160	28.6	27.9	26.4	25.7	24.9	24.8	24.9	25.8	26.6	27.5	29.0	29.8	30.6	30.6	30.4	29.6			
165	20.4	19.8	18.6	17.9	17.2	17.2	17.3	18.0	18.7	19.4	20.7	21.4	22.0	22.0	21.8	21.2			
170	14.0	13.7	12.9	12.5	12.1	12.0	12.1	12.5	12.9	13.4	14.3	14.8	15.3	15.2	15.1	14.6			
175	10.7	10.8	10.6	10.5	10.6	10.6	10.7	10.7	10.6	10.7	10.8	11.0	11.2	11.3	11.2	11.1			
180	10.3	10.4	10.4	10.6	10.6	10.7	10.8	11.0	10.5	10.3	10.5	10.6	10.7	10.7	10.8	10.9			

C Range: 0 - 360DEG
 C Interval: 22.5DEG
 Test Speed: HIGH
 Temperature:25.3℃
 Operators:DAMIN
 Test Date:2023-11-09

γ Range: 0 - 180DEG
 γ Interval: 5.0DEG
 Test System:EVERFINE GO-2000B_V1 SYSTEM V2.00.473
 Humidity:65.0%
 Test Distance:9.401m [K=1.0000]
 Remarks: