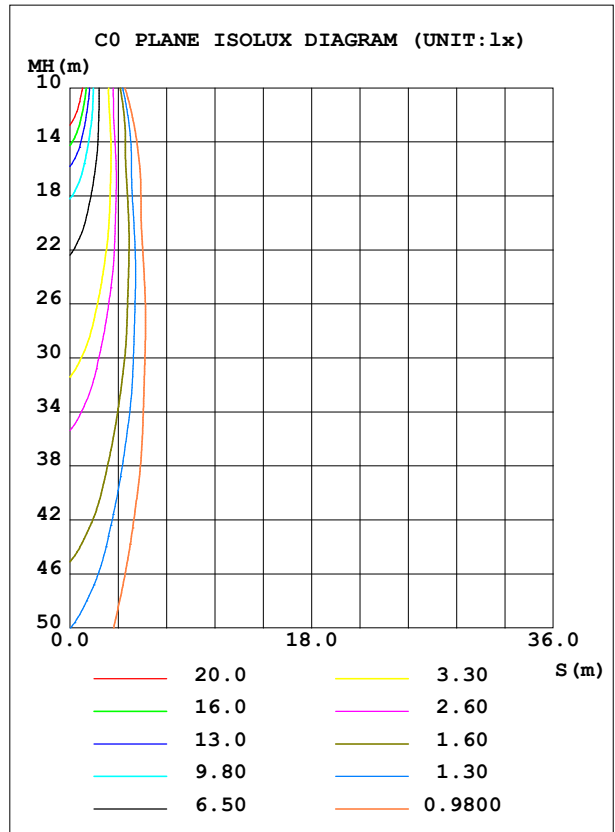
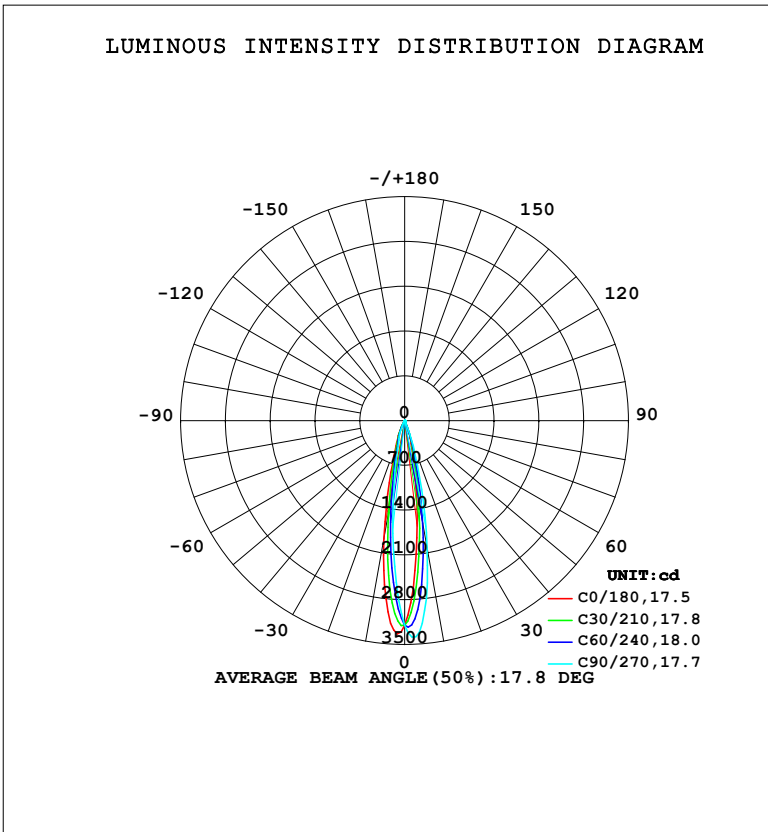


LUMINAIRE PHOTOMETRIC TEST REPORT

Test:U:220.32V I:0.0778A P:9.9623W PF:0.5812 Freq:50.00Hz Lamp Flux:466.299x1 lm		
NAME:	TYPE:	WEIGHT:
SPEC.:	DIM.:	SERIAL No.:
MFR.: EVERFINE	SUR.:	Shielding Angle:

DATA OF LAMP		PHOTOMETRIC DATA				Eff: 46.81 lm/W
MODEL	MB18-614M	I _{max} (cd)	3668	S/MH (C0/180)	0.37	
NOMINAL POWER (W)	10	LOR (%)	100.0	S/MH (C90/270)	0.23	
RATED VOLTAGE (V)	220	TOTAL FLUX (lm)	466.30	η UP, DN (C0-180)	0.0,57.1	
NOMINAL FLUX (lm)	466.299	CIE CLASS	DIRECT	η UP, DN (C180-360)	0.0,42.9	
LAMPS INSIDE	1	η up (%)	0.0	CIBSE SHR NOM	0.00	
TEST VOLTAGE (V)	219.5	η down (%)	100.0	CIBSE SHR MAX	0.30	



C Range: 0 - 360DEG
 C Interval: 15.0DEG
 Test Speed: HIGH
 Temperature: 25.3°C
 Operators: DAMIN
 Test Date: 2024-05-30

γ Range: 0 - 90DEG
 γ Interval: 1.0DEG
 Test System: EVERFINE GO-2000B_V1 SYSTEM V2.00.473
 Humidity: 65.0%
 Test Distance: 9.401m [K=1.0000]
 Remarks:

ZONAL FLUX DIAGRAM

ZONAL FLUX DIAGRAM:

γ	C0	C45	C90	C135	C180	C225	C270	C315	γ	Φ zone	Φ total	%lum,lamp
10	999.4	1446	2037	2422	1875	1280	945.2	817.8	0- 10	210.5	210.5	45.2,45.2
20	212.6	237.0	336.0	446.3	369.1	291.3	237.9	217.0	10- 20	190.6	401.2	86,86
30	18.91	16.06	19.68	28.26	33.85	44.83	26.13	21.29	20- 30	51.94	453.1	97.2,97.2
40	5.945	4.800	3.323	6.769	8.671	9.286	8.033	6.379	30- 40	8.294	461.4	98.9,98.9
50	1.417	0.3713	0.2852	0.8753	3.067	3.640	3.163	2.128	40- 50	2.888	464.3	99.6,99.6
60	0.4326	0	0	0	0.8803	1.741	1.624	1.121	50- 60	1.027	465.3	99.8,99.8
70	0.1598	0	0	0	0.2897	0.9605	0.9843	0.6338	60- 70	0.5086	465.8	99.9,99.9
80	0.0237	0	0	0	0.1062	0.5585	0.5981	0.4021	70- 80	0.2943	466.1	100,100
90	0	0	0	0	0	0.4021	0.5257	0.2619	80- 90	0.1896	466.3	100,100
100									90-100			
110									100-110			
120									110-120			
130									120-130			
140									130-140			
150									140-150			
160									150-160			
170									160-170			
180									170-180			
DEG	LUMINOUS INTENSITY:cd									UNIT:lm		

Conical surface Flux(90deg): 463.24 lm

%lum = 99.3%

%lamp = 99.3%

Conical surface Flux(130deg): 465.6 lm

%lum = 99.8%

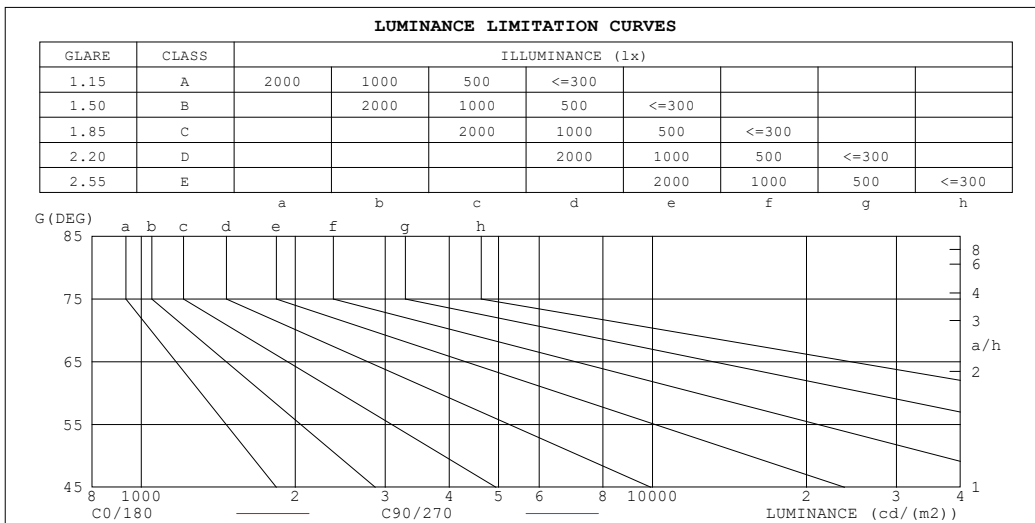
%lamp = 99.8%

C Range: 0 - 360DEG
 C Interval: 15.0DEG
 Test Speed: HIGH
 Temperature:25.3°C
 Operators:DAMIN
 Test Date:2024-05-30

γ Range: 0 - 90DEG
 γ Interval: 1.0DEG
 Test System:EVERFINE GO-2000B_V1 SYSTEM V2.00.473
 Humidity:65.0%
 Test Distance:9.401m [K=1.0000]
 Remarks:

LUMINANCE LIMITATION CURVES

Test:U:220.32V I:0.0778A P:9.9623W PF:0.5812 Freq:50.00Hz Lamp Flux:466.299x1 lm		
NAME:	TYPE:	WEIGHT:
SPEC.:	DIM.:	SERIAL No.:
MFR.: EVERFINE	SUR.:	Shielding Angle:



LUMINANCE cd/ (m2)		
G (DEG)	C0/180	C90/270
85	0	0
80	14	0
75	37	0
70	48	0
65	61	0
60	88	0
55	130	0
50	224	44
45	414	138

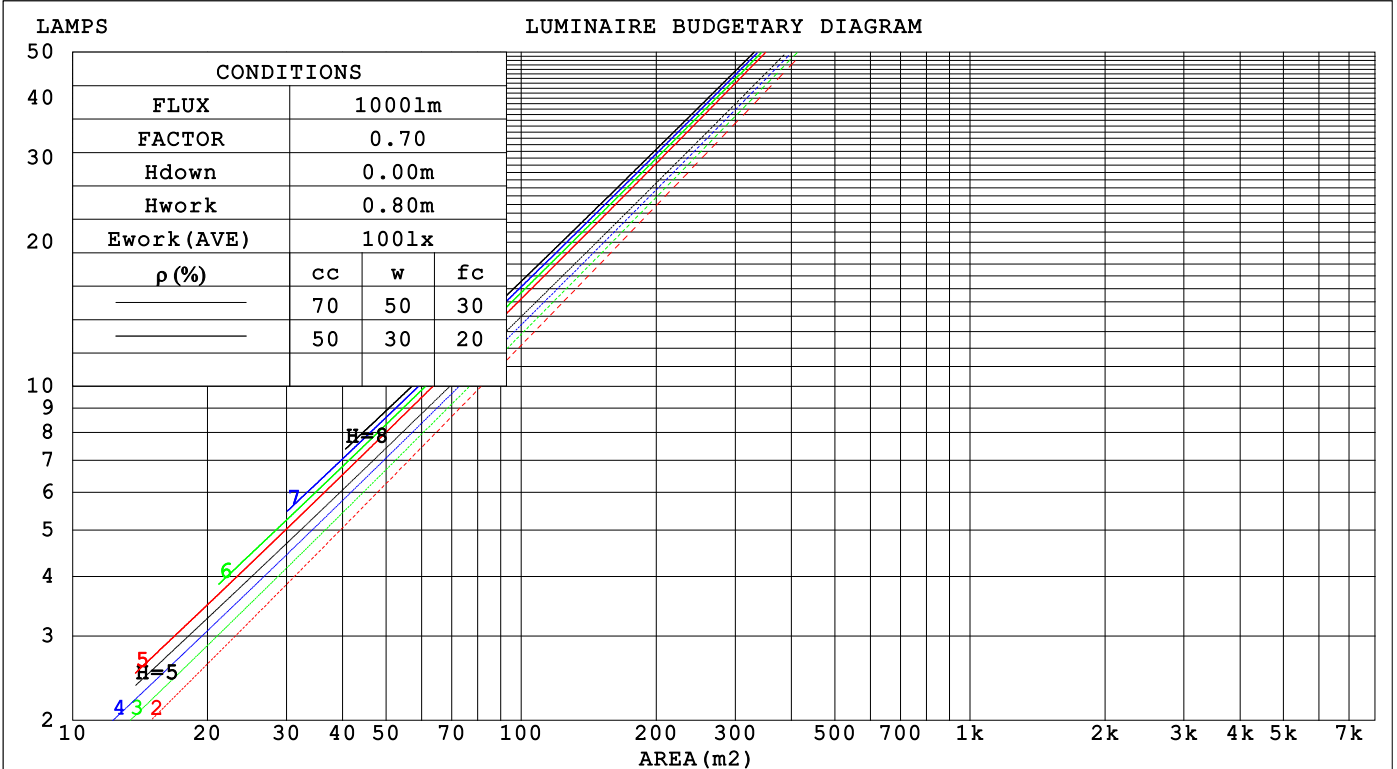
C Range: 0 - 360DEG
 C Interval: 15.0DEG
 Test Speed: HIGH
 Temperature:25.3°C
 Operators:DAMIN
 Test Date:2024-05-30

γ Range: 0 - 90DEG
 γ Interval: 1.0DEG
 Test System:EVERFINE GO-2000B_V1 SYSTEM V2.00.473
 Humidity:65.0%
 Test Distance:9.401m [K=1.0000]
 Remarks:

CU AND LUMINAIRE BUDGETARY ESTIMATE DIAGRAM

Test:U:220.32V I:0.0778A P:9.9623W PF:0.5812 Freq:50.00Hz Lamp Flux:466.299x1 lm		
NAME:	TYPE:	WEIGHT:
SPEC.:	DIM.:	SERIAL No.:
MFR.: EVERFINE	SUR.:	Shielding Angle:

ρcc	80%			70%			50%			30%			10%			0
ρw	50%	30%	10%	50%	30%	10%	50%	30%	10%	50%	30%	10%	50%	30%	10%	0
ρfc	20%			20%			20%			20%			20%			0
RCR	RCR:Room Cavity Ratio															
	Coefficients of Utilization(CU)															
0.0	1.19	1.19	1.19	1.16	1.16	1.16	1.11	1.11	1.11	1.06	1.06	1.06	1.02	1.02	1.02	1.00
1.0	1.13	1.12	1.10	1.11	1.10	1.08	1.07	1.06	1.05	1.04	1.03	1.02	1.00	.00	.99	.97
2.0	1.09	1.06	1.03	1.07	1.04	1.02	1.04	1.02	1.00	1.01	.99	.98	.98	.97	.96	.95
3.0	1.04	1.01	.98	1.03	1.00	.98	1.01	.98	.96	.98	.96	.95	.96	.95	.93	.92
4.0	1.01	.97	.94	.00	.97	.94	.98	.95	.93	.96	.94	.92	.94	.92	.91	.90
5.0	.98	.94	.91	.97	.93	.91	.95	.92	.90	.94	.91	.89	.93	.90	.89	.88
6.0	.95	.91	.88	.94	.91	.88	.93	.90	.88	.92	.89	.87	.91	.88	.87	.86
7.0	.92	.89	.86	.92	.88	.86	.91	.88	.85	.90	.87	.85	.89	.86	.85	.84
8.0	.90	.86	.84	.90	.86	.84	.89	.85	.83	.88	.85	.83	.87	.85	.83	.82
9.0	.88	.84	.82	.87	.84	.82	.87	.84	.81	.86	.83	.81	.85	.83	.81	.80
10.0	.86	.82	.80	.85	.82	.80	.85	.82	.80	.84	.81	.79	.84	.81	.79	.78



C Range: 0 - 360DEG
 C Interval: 15.0DEG
 Test Speed: HIGH
 Temperature:25.3°C
 Operators:DAMIN
 Test Date:2024-05-30

γ Range: 0 - 90DEG
 γ Interval: 1.0DEG
 Test System:EVERFINE GO-2000B_V1 SYSTEM V2.00.473
 Humidity:65.0%
 Test Distance:9.401m [K=1.0000]
 Remarks:

WEC AND CCEC

Test:U:220.32V I:0.0778A P:9.9623W PF:0.5812 Freq:50.00Hz								
Lamp Flux:466.299x1 lm								
NAME:			TYPE:			WEIGHT:		
SPEC.:			DIM.:			SERIAL No.:		
MFR.: EVERFINE			SUR.:			Shielding Angle:		

ρ_{CC}	80%			70%			50%			30%			10%			0
ρ_w	50%	30%	10%	50%	30%	10%	50%	30%	10%	50%	30%	10%	50%	30%	10%	0
ρ_{fc}	20%			20%			20%			20%			20%			0
RCR	RCR:Room Cavity Ratio						Wall Exitance Coefficients (WEC)									
0.0																
1.0	.129	.073	.023	.122	.070	.022	.110	.063	.020	.098	.057	.018	.088	.051	.016	
2.0	.118	.065	.020	.113	.062	.019	.103	.057	.018	.093	.052	.016	.085	.048	.015	
3.0	.109	.058	.017	.105	.056	.017	.096	.052	.016	.089	.049	.015	.081	.045	.014	
4.0	.102	.053	.016	.098	.051	.015	.091	.048	.014	.084	.045	.014	.078	.043	.013	
5.0	.095	.049	.014	.092	.047	.014	.086	.045	.013	.081	.043	.013	.076	.040	.012	
6.0	.090	.045	.013	.087	.044	.013	.082	.042	.012	.077	.040	.012	.073	.038	.011	
7.0	.085	.042	.012	.083	.041	.012	.078	.040	.011	.074	.038	.011	.070	.037	.011	
8.0	.081	.040	.011	.079	.039	.011	.075	.037	.011	.071	.036	.010	.068	.035	.010	
9.0	.077	.037	.010	.075	.037	.010	.072	.036	.010	.069	.034	.010	.066	.033	.010	
10.0	.074	.035	.010	.072	.035	.010	.069	.034	.010	.066	.033	.009	.064	.032	.009	

ρ_{CC}	80%			70%			50%			30%			10%			0
ρ_w	50%	30%	10%	50%	30%	10%	50%	30%	10%	50%	30%	10%	50%	30%	10%	0
ρ_{fc}	20%			20%			20%			20%			20%			0
RCR	RCR:Room Cavity Ratio						Ceiling Cavity Exitance Coefficients (CCEC)									
0.0	.190	.190	.190	.163	.163	.163	.111	.111	.111	.064	.064	.064	.020	.020	.020	
1.0	.168	.158	.149	.144	.135	.128	.098	.093	.089	.057	.054	.051	.018	.017	.017	
2.0	.149	.133	.119	.128	.114	.103	.088	.079	.072	.050	.046	.042	.016	.015	.014	
3.0	.134	.113	.097	.114	.098	.084	.079	.068	.059	.045	.040	.035	.015	.013	.011	
4.0	.121	.098	.080	.103	.084	.070	.071	.059	.049	.041	.034	.029	.013	.011	.010	
5.0	.110	.085	.067	.094	.074	.058	.065	.052	.041	.038	.030	.025	.012	.010	.008	
6.0	.100	.075	.057	.086	.065	.050	.060	.046	.035	.035	.027	.021	.011	.009	.007	
7.0	.092	.067	.049	.080	.058	.042	.055	.041	.030	.032	.024	.018	.010	.008	.006	
8.0	.086	.060	.042	.074	.052	.037	.051	.036	.026	.030	.022	.016	.010	.007	.005	
9.0	.080	.054	.037	.069	.047	.032	.048	.033	.023	.028	.019	.014	.009	.006	.004	
10.0	.075	.049	.032	.065	.043	.028	.045	.030	.020	.026	.018	.012	.008	.006	.004	

C Range: 0 - 360DEG
 C Interval: 15.0DEG
 Test Speed: HIGH
 Temperature:25.3°C
 Operators:DAMIN
 Test Date:2024-05-30

γ Range: 0 - 90DEG
 γ Interval: 1.0DEG
 Test System:EVERFINE GO-2000B_V1 SYSTEM V2.00.473
 Humidity:65.0%
 Test Distance:9.401m [K=1.0000]
 Remarks:

UGR(Unified Glare Rating) Table

Test:U:220.32V I:0.0778A P:9.9623W PF:0.5812 Freq:50.00Hz										
Lamp Flux:466.299x1 lm										
NAME:			TYPE:				WEIGHT:			
SPEC.:			DIM.:				SERIAL No.:			
MFR.: EVERFINE			SUR.:				Shielding Angle:			
ceiling/cavity	0.7	0.7	0.5	0.5	0.3	0.7	0.7	0.5	0.5	0.3
walls	0.5	0.3	0.5	0.3	0.3	0.5	0.3	0.5	0.3	0.3
working plane	0.2	0.2	0.2	0.2	0.2	0.2	0.2	0.2	0.2	0.2
Room dimensions	Viewed crosswise					Viewed endwise				
x = 2H y = 2H	-2.1	-1.5	-1.9	-1.3	-1.2	-3.7	-3.1	-3.5	-2.9	-2.8
3H	-2.2	-1.7	-2.0	-1.5	-1.3	-3.8	-3.3	-3.6	-3.1	-2.9
4H	-2.3	-1.7	-2.0	-1.5	-1.3	-3.9	-3.4	-3.6	-3.1	-2.9
6H	-2.4	-1.9	-2.1	-1.6	-1.4	-4.0	-3.5	-3.7	-3.2	-3.0
8H	-2.4	-1.9	-2.1	-1.7	-1.4	-4.0	-3.5	-3.7	-3.3	-3.0
12H	-2.4	-2.0	-2.1	-1.7	-1.5	-4.1	-3.6	-3.7	-3.3	-3.1
4H 2H	-2.3	-1.8	-2.1	-1.6	-1.4	-3.9	-3.3	-3.6	-3.1	-2.9
3H	-2.5	-2.0	-2.2	-1.7	-1.5	-4.0	-3.6	-3.7	-3.3	-3.1
4H	-2.5	-2.1	-2.2	-1.8	-1.5	-4.1	-3.7	-3.8	-3.4	-3.1
6H	-2.6	-2.3	-2.3	-1.9	-1.6	-4.2	-3.9	-3.9	-3.5	-3.2
8H	-2.7	-2.3	-2.3	-2.0	-1.6	-4.3	-3.9	-3.9	-3.6	-3.2
12H	-2.8	-2.4	-2.4	-2.1	-1.7	-4.4	-4.0	-4.0	-3.7	-3.3
8H 4H	-2.7	-2.3	-2.3	-2.0	-1.6	-4.3	-3.9	-3.9	-3.6	-3.2
6H	-2.8	-2.5	-2.4	-2.1	-1.7	-4.4	-4.1	-4.0	-3.7	-3.3
8H	-2.9	-2.6	-2.4	-2.2	-1.8	-4.5	-4.2	-4.0	-3.8	-3.4
12H	-2.9	-2.7	-2.5	-2.3	-1.8	-4.5	-4.3	-4.1	-3.9	-3.4
12H 4H	-2.8	-2.4	-2.4	-2.1	-1.7	-4.4	-4.0	-4.0	-3.7	-3.3
6H	-2.9	-2.6	-2.4	-2.2	-1.8	-4.5	-4.2	-4.0	-3.8	-3.4
8H	-2.9	-2.7	-2.5	-2.3	-1.8	-4.5	-4.3	-4.1	-3.9	-3.4
Variations with the observer position at spacings(CIE Pub.117):										
S = 1.0H	+ 4.0 / -12.0					+ 4.4 / - 1.5				
1.5H	+ 6.1 / -12.6					+ 7.0 / - 1.5				
2.0H	+ 7.8 / -23.0					+ 8.4 / - 1.5				

CIE Pub.117, 466.3 lm Total Lamp Luminous Flux Correct (8log(F/F0) = -2.7)
 Area: 0.01 m2

C Range: 0 - 360DEG
 C Interval: 15.0DEG
 Test Speed: HIGH
 Temperature:25.3°C
 Operators:DAMIN
 Test Date:2024-05-30

γ Range: 0 - 90DEG
 γ Interval: 1.0DEG
 Test System:EVERFINE GO-2000B_V1 SYSTEM V2.00.473
 Humidity:65.0%
 Test Distance:9.401m [K=1.0000]
 Remarks:

UTILIZATION FACTORS TABLE

Test:U:220.32V I:0.0778A P:9.9623W PF:0.5812 Freq:50.00Hz Lamp Flux:466.299x1 lm		
NAME:	TYPE:	WEIGHT:
SPEC.:	DIM.:	SERIAL No.:
MFR.: EVERFINE	SUR.:	Shielding Angle:

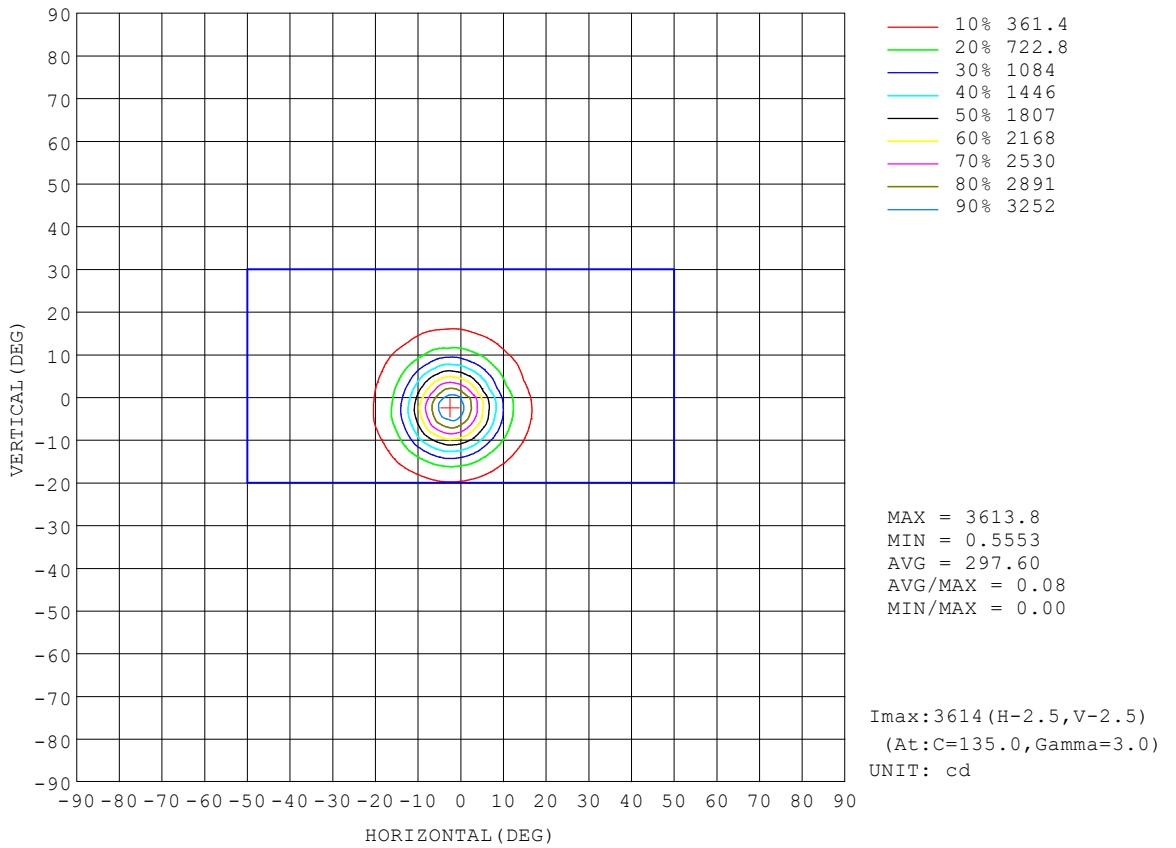
REFLECTANCE										
Ceiling	0.8	0.8	0.8	0.7	0.7	0.7	0.5	0.5	0.5	0
Walls	0.7	0.5	0.3	0.7	0.5	0.3	0.7	0.5	0.3	0
Working plane	0.2	0.2	0.2	0.2	0.2	0.2	0.2	0.2	0.2	0
ROOM INDEX	UTILIZATION FACTORS (PERCENT) $k(RI) \times RCR = 5$									
$k = 0.60$	91	85	82	90	85	82	90	85	82	78
0.80	98	93	89	97	92	89	96	92	89	86
1.00	102	97	93	101	96	93	99	96	93	89
1.25	105	101	97	104	100	97	102	99	96	92
1.50	108	103	100	106	103	100	104	101	99	95
2.00	110	106	103	108	105	102	106	103	101	96
2.50	111	108	105	110	107	104	107	104	102	97
3.00	113	110	107	111	108	106	108	105	104	98
4.00	114	112	110	112	110	109	109	107	106	99
5.00	116	114	112	114	112	110	110	108	107	100
ROOM INDEX	UF(total)									Direct
According to DIN EN 13032-2 2004			Suspended				SHRNOM = 1.25			

C Range: 0 - 360DEG
 C Interval: 15.0DEG
 Test Speed: HIGH
 Temperature:25.3°C
 Operators:DAMIN
 Test Date:2024-05-30

γ Range: 0 - 90DEG
 γ Interval: 1.0DEG
 Test System:EVERFINE GO-2000B_V1 SYSTEM V2.00.473
 Humidity:65.0%
 Test Distance:9.401m [K=1.0000]
 Remarks:

ISOCANDELA DIAGRAM

Test:U:220.32V I:0.0778A P:9.9623W PF:0.5812 Freq:50.00Hz Lamp Flux:466.299x1 lm		
NAME:	TYPE:	WEIGHT:
SPEC.:	DIM.:	SERIAL No.:
MFR.: EVERFINE	SUR.:	Shielding Angle:

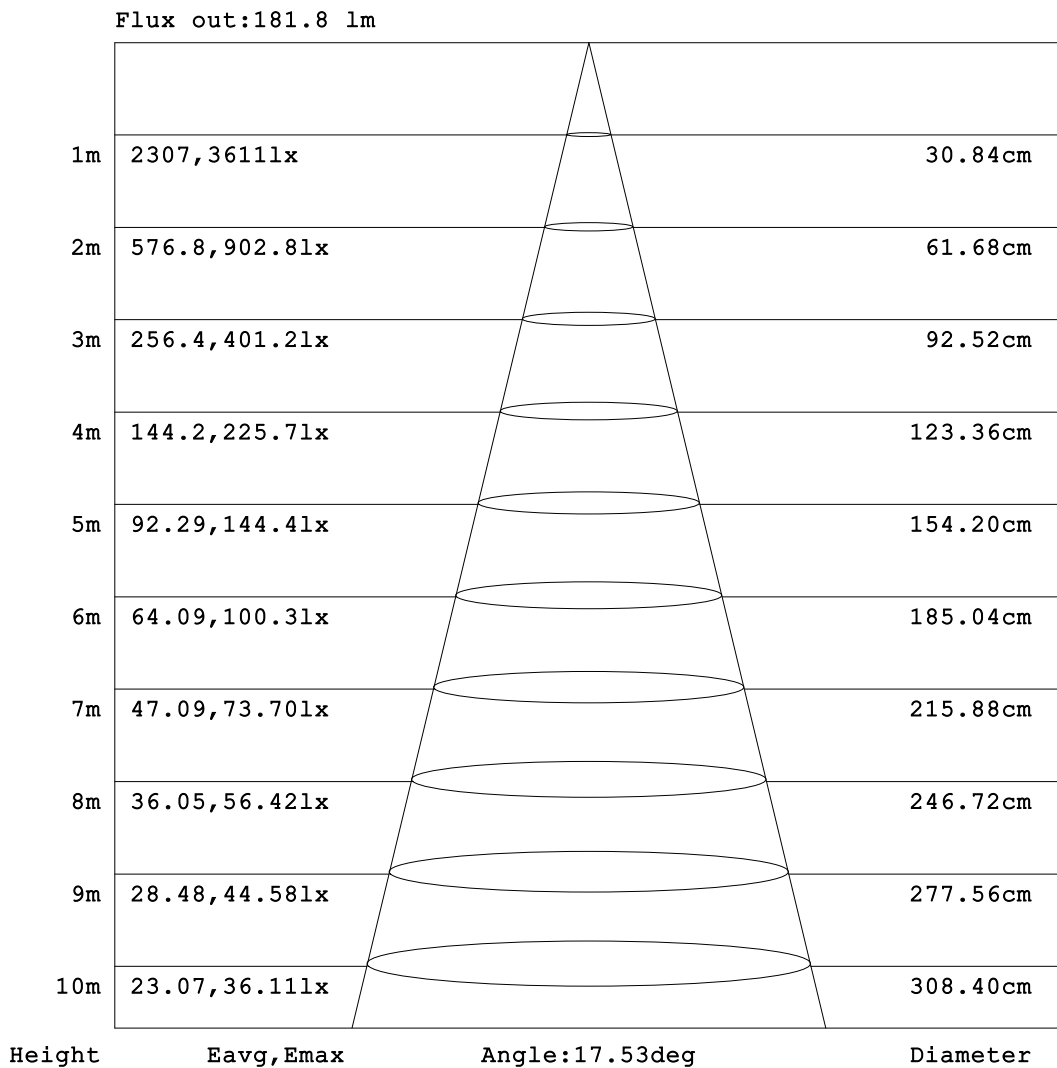


C Range: 0 - 360DEG
 C Interval: 15.0DEG
 Test Speed: HIGH
 Temperature:25.3°C
 Operators:DAMIN
 Test Date:2024-05-30

γ Range: 0 - 90DEG
 γ Interval: 1.0DEG
 Test System:EVERFINE GO-2000B_V1 SYSTEM V2.00.473
 Humidity:65.0%
 Test Distance:9.401m [K=1.0000]
 Remarks:

AAI Figure

Test:U:220.32V I:0.0778A P:9.9623W PF:0.5812 Freq:50.00Hz Lamp Flux:466.299x1 lm		
NAME:	TYPE:	WEIGHT:
SPEC.:	DIM.:	SERIAL No.:
MFR.: EVERFINE	SUR.:	Shielding Angle:



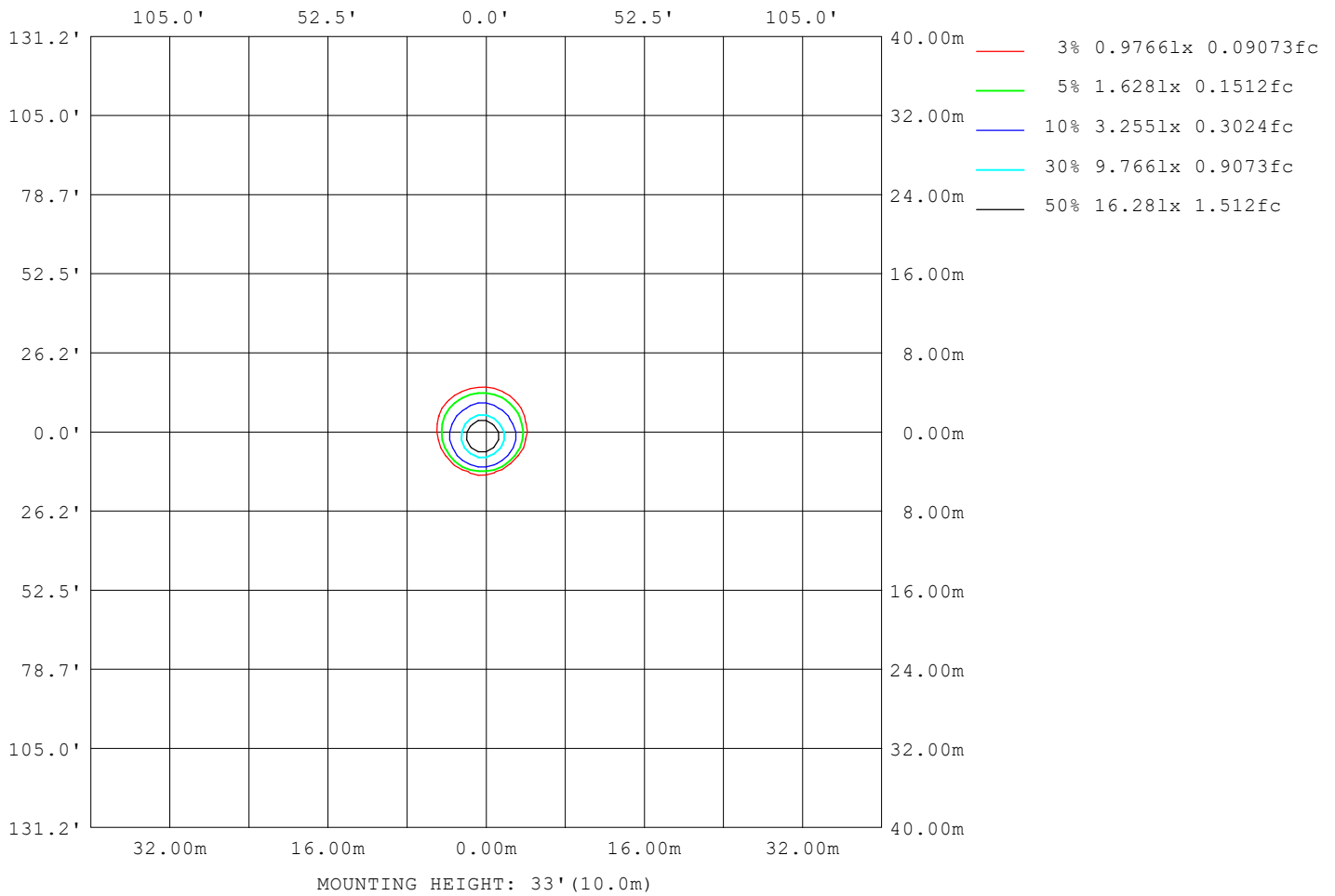
Note: The Curves indicate the illuminated area and the average illumination when the luminaire is at different distance.

C Range: 0 - 360DEG
 C Interval: 15.0DEG
 Test Speed: HIGH
 Temperature: 25.3°C
 Operators: DAMIN
 Test Date: 2024-05-30

γ Range: 0 - 90DEG
 γ Interval: 1.0DEG
 Test System: EVERFINE GO-2000B_V1 SYSTEM V2.00.473
 Humidity: 65.0%
 Test Distance: 9.401m [K=1.0000]
 Remarks:

ISOLUX DIAGRAM

Test:U:220.32V I:0.0778A P:9.9623W PF:0.5812 Freq:50.00Hz Lamp Flux:466.299x1 lm		
NAME:	TYPE:	WEIGHT:
SPEC.:	DIM.:	SERIAL No.:
MFR.: EVERFINE	SUR.:	Shielding Angle:



C Range: 0 - 360DEG
 C Interval: 15.0DEG
 Test Speed: HIGH
 Temperature:25.3°C
 Operators:DAMIN
 Test Date:2024-05-30

γ Range: 0 - 90DEG
 γ Interval: 1.0DEG
 Test System:EVERFINE GO-2000B_V1 SYSTEM V2.00.473
 Humidity:65.0%
 Test Distance:9.401m [K=1.0000]
 Remarks:

LED Avg.L Report

Test:U:220.32V I:0.0778A P:9.9623W PF:0.5812 Freq:50.00Hz Lamp Flux:466.299x1 lm		
NAME:	TYPE:	WEIGHT:
SPEC.:	DIM.:	SERIAL No.:
MFR.: EVERFINE	SUR.:	Shielding Angle:

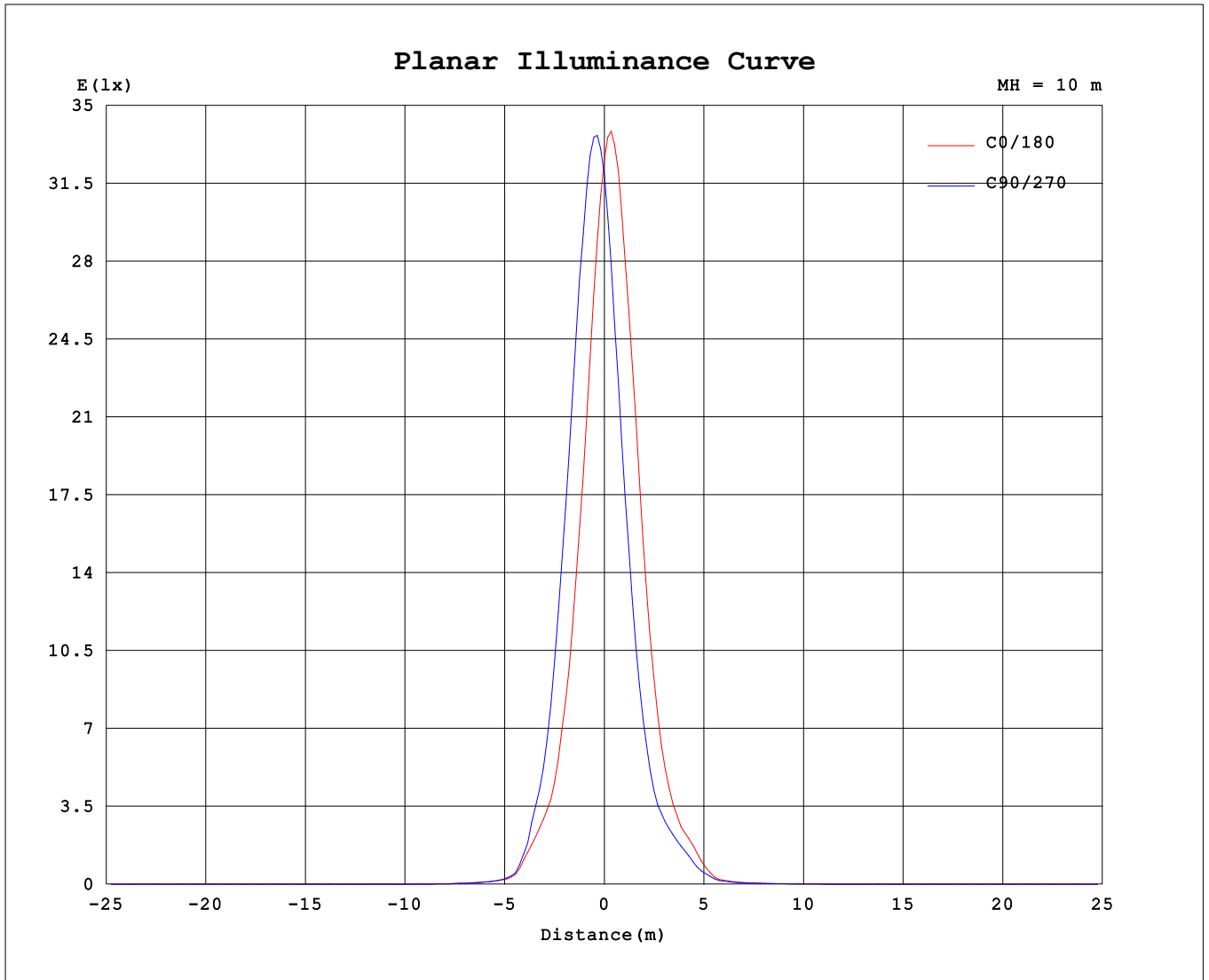
AvgL	cd/m2
L_0~180 (65) av	88
L_0~180 (75) av	51
L_0~180 (85) av	10
L_90~270 (65) av	148
L_90~270 (75) av	144
L_90~270 (85) av	302
L_45 (65) av	125
L_45 (75) av	119
L_45 (85) av	236

Standard: GB/T 29293-2012

C Range: 0 - 360DEG
 C Interval: 15.0DEG
 Test Speed: HIGH
 Temperature:25.3°C
 Operators:DAMIN
 Test Date:2024-05-30

γ Range: 0 - 90DEG
 γ Interval: 1.0DEG
 Test System:EVERFINE GO-2000B_V1 SYSTEM V2.00.473
 Humidity:65.0%
 Test Distance:9.401m [K=1.0000]
 Remarks:

Planar Illuminance Curve



C Range: 0 - 360DEG
 C Interval: 15.0DEG
 Test Speed: HIGH
 Temperature: 25.3°C
 Operators: DAMIN
 Test Date: 2024-05-30

γ Range: 0 - 90DEG
 γ Interval: 1.0DEG
 Test System: EVERFINE GO-2000B_V1 SYSTEM V2.00.473
 Humidity: 65.0%
 Test Distance: 9.401m [K=1.0000]
 Remarks:

LUMINOUS DISTRIBUTION INTENSITY DATA

Test:U:220.32V I:0.0778A P:9.9623W PF:0.5812 Freq:50.00Hz Lamp Flux:466.299x1 lm		
NAME:	TYPE:	WEIGHT:
SPEC.:	DIM.:	SERIAL No.:
MFR.: EVERFINE	SUR.:	Shielding Angle:

Table--1

UNIT: cd

C (DEG) \ γ (DEG)	0	15	30	45	60	75	90	105	120	135	150	165	180	195	210	225	240	255	270
0	3199	3199	3199	3199	3199	3199	3199	3199	3199	3199	3199	3199	3199	3199	3199	3199	3199	3199	3199
5	2093	2251	2378	2605	2786	3018	3177	3398	3449	3528	3426	3327	2999	2798	2660	2466	2313	2127	2020
10	999	1120	1272	1446	1625	1858	2037	2257	2331	2422	2281	2193	1875	1644	1473	1280	1174	1035	945
15	419	476	523	607	670	780	902	1039	1104	1164	1071	1002	837	714	628	544	489	432	400
20	213	223	220	237	244	288	336	388	403	446	423	417	369	334	314	291	276	247	238
25	43.9	40.1	40.4	38.8	39.8	47.1	51.9	62.2	80.2	117	148	178	187	190	188	163	144	114	105
30	18.9	19.3	16.6	16.1	15.9	18.2	19.7	21.3	23.2	28.3	29.9	34.0	33.8	36.0	48.5	44.8	39.4	28.6	26.1
35	10.8	10.1	8.80	9.19	8.42	7.54	9.03	11.9	12.6	14.3	16.0	16.0	14.9	17.1	16.4	15.7	14.9	14.3	13.1
40	5.94	4.61	4.60	4.80	3.65	2.52	3.32	5.89	6.63	6.77	8.32	9.58	8.67	9.41	9.54	9.29	8.49	8.39	8.03
45	2.88	1.97	2.12	1.87	1.04	0.81	0.98	1.84	2.75	2.71	3.50	5.73	5.32	4.98	5.69	6.07	5.30	4.96	5.02
50	1.42	0.86	0.72	0.37	0.32	0.24	0.29	0.29	0.59	0.88	1.33	2.87	3.07	2.75	3.27	3.64	3.30	3.01	3.16
55	0.73	0.40	0.27	0.04	0.00	0.00	0.00	0.00	0.12	0.25	0.56	1.24	1.71	1.70	2.02	2.45	2.27	2.12	2.18
60	0.43	0.17	0.06	0.00	0.00	0.00	0.00	0.00	0.00	0.00	0.25	0.50	0.88	1.11	1.34	1.74	1.68	1.64	1.62
65	0.25	0.04	0.01	0.00	0.00	0.00	0.00	0.00	0.00	0.00	0.07	0.24	0.49	0.77	0.96	1.27	1.27	1.33	1.25
70	0.16	0.00	0.00	0.00	0.00	0.00	0.00	0.00	0.00	0.00	0.04	0.08	0.29	0.55	0.69	0.96	0.99	1.09	0.98
75	0.09	0.00	0.00	0.00	0.00	0.00	0.00	0.00	0.00	0.00	0.00	0.02	0.17	0.40	0.51	0.73	0.74	0.85	0.74
80	0.02	0.00	0.00	0.00	0.00	0.00	0.00	0.00	0.00	0.00	0.00	0.00	0.11	0.30	0.38	0.56	0.60	0.70	0.60
85	0.00	0.00	0.00	0.00	0.00	0.00	0.00	0.00	0.00	0.00	0.00	0.00	0.02	0.23	0.30	0.49	0.50	0.59	0.53
90	0.00	0.00	0.00	0.00	0.00	0.00	0.00	0.00	0.00	0.00	0.00	0.00	0.00	0.13	0.23	0.40	0.44	0.53	0.53

C Range: 0 - 360DEG
 C Interval: 15.0DEG
 Test Speed: HIGH
 Temperature:25.3°C
 Operators:DAMIN
 Test Date:2024-05-30

γ Range: 0 - 90DEG
 γ Interval: 1.0DEG
 Test System:EVERFINE GO-2000B_V1 SYSTEM V2.00.473
 Humidity:65.0%
 Test Distance:9.401m [K=1.0000]
 Remarks:

