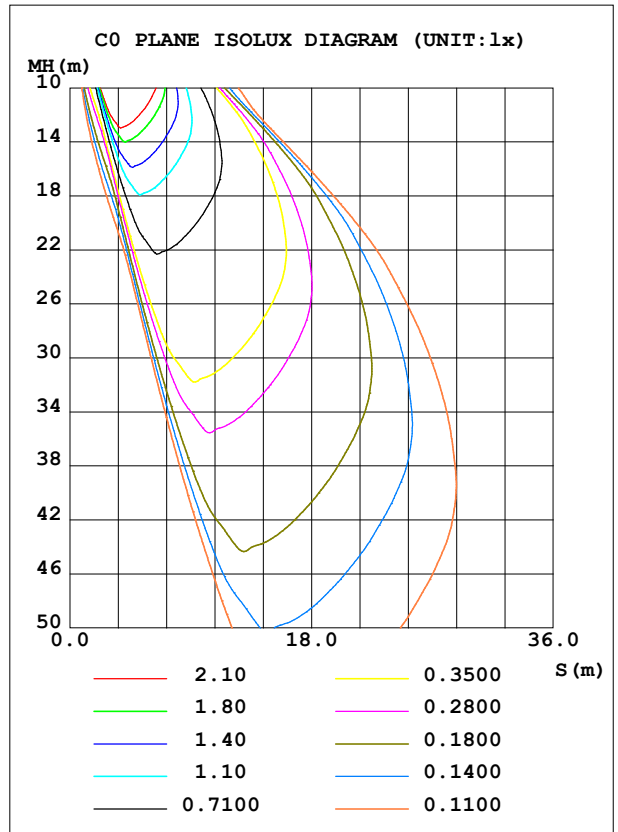
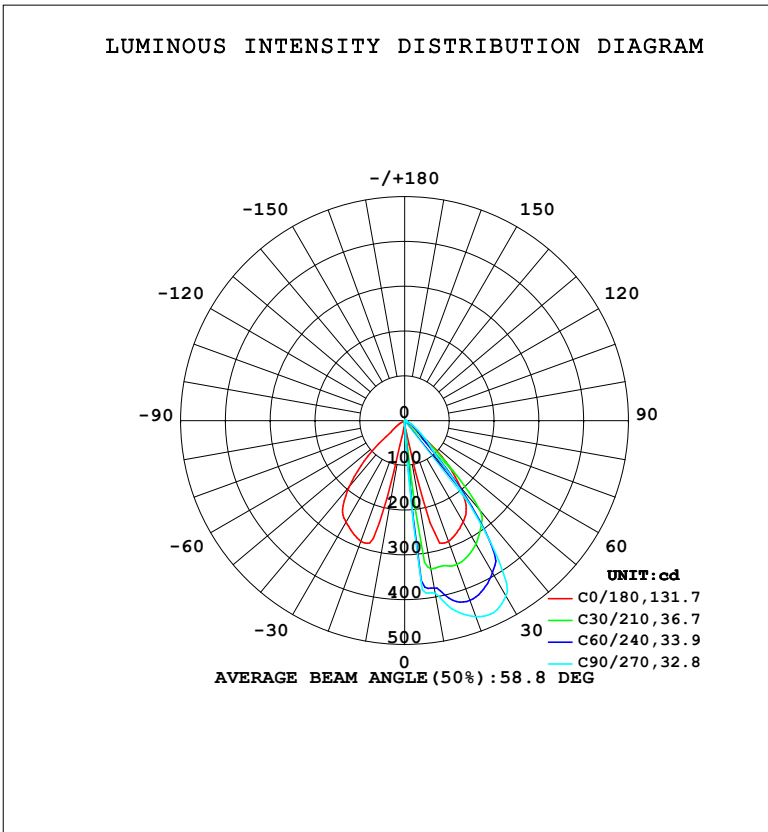


LUMINAIRE PHOTOMETRIC TEST REPORT

Test:U:220.22V I:0.0792A P:10.160W PF:0.5824 Freq:50.00Hz Lamp Flux:407.704x1 lm		
NAME:	TYPE:	WEIGHT:
SPEC.:	DIM.:	SERIAL No.:
MFR.: EVERFINE	SUR.:	Shielding Angle:

DATA OF LAMP		PHOTOMETRIC DATA				Eff: 40.13 lm/W
MODEL	MB23-0209	I _{max} (cd)	970.6	S/MH (C0/180)	2.82	
NOMINAL POWER (W)	10	LOR (%)	100.0	S/MH (C90/270)	0.40	
RATED VOLTAGE (V)	220	TOTAL FLUX (lm)	407.70	η UP, DN (C0-180)	0.0, 90.8	
NOMINAL FLUX (lm)	407.704	CIE CLASS	DIRECT	η UP, DN (C180-360)	0.0, 9.2	
LAMPS INSIDE	1	η up (%)	0.0	CIBSE SHR NOM	0.00	
TEST VOLTAGE (V)	219.5	η down (%)	100.0	CIBSE SHR MAX	0.00	



C Range: 0 - 360DEG
 C Interval: 15.0DEG
 Test Speed: HIGH
 Temperature: 25.3°C
 Operators: DAMIN
 Test Date: 2024-06-11

γ Range: 0 - 90DEG
 γ Interval: 1.0DEG
 Test System: EVERFINE GO-2000B_V1 SYSTEM V2.00.473
 Humidity: 65.0%
 Test Distance: 9.401m [K=1.0000]
 Remarks:

ZONAL FLUX DIAGRAM

ZONAL FLUX DIAGRAM:

γ	C0	C45	C90	C135	C180	C225	C270	C315	γ	Φ zone	Φ total	%lum, lamp
10	36.16	366.9	391.0	705.3	37.74	0.4314	0.3321	0.3947	0- 10	12.25	12.25	3.01,3.01
20	286.9	392.5	465.5	763.0	286.6	0.4127	0.1106	0.2557	10- 20	68.65	80.91	19.8,19.8
30	261.5	366.2	452.3	709.7	261.9	0.5333	0	0.5095	20- 30	115.7	196.6	48.2,48.2
40	193.5	226.4	163.8	464.3	192.9	0.5680	0	0.7107	30- 40	128.3	324.8	79.7,79.7
50	37.78	39.03	52.01	76.71	39.84	0.2699	0	0.3185	40- 50	61.28	386.1	94.7,94.7
60	8.521	15.56	18.45	29.81	8.605	0	0	0	50- 60	16.86	403.0	98.8,98.8
70	0.1640	1.145	3.765	2.161	0.1292	0	0	0	60- 70	3.780	406.8	99.8,99.8
80	0.0390	0.4735	1.758	0.8851	0	0	0	0	70- 80	0.6271	407.4	99.9,99.9
90	0	0.3191	0.8071	0.6832	0	0	0	0	80- 90	0.3214	407.7	100,100
100									90-100			
110									100-110			
120									110-120			
130									120-130			
140									130-140			
150									140-150			
160									150-160			
170									160-170			
180									170-180			
DEG	LUMINOUS INTENSITY:cd									UNIT:lm		

Conical surface Flux(90deg): 365.69 lm

%lum = 89.7%

%lamp = 89.7%

Conical surface Flux(130deg): 405.94 lm

%lum = 99.6%

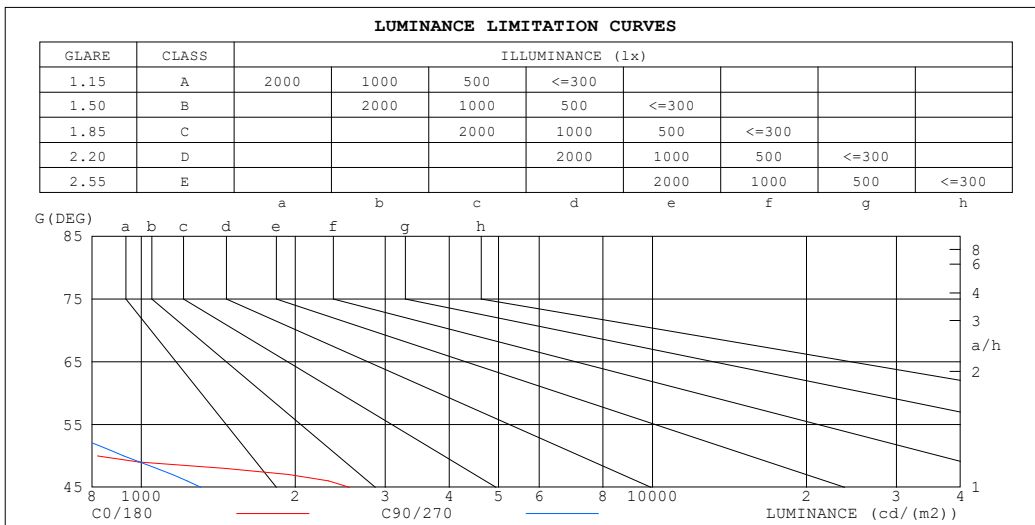
%lamp = 99.6%

C Range: 0 - 360DEG
 C Interval: 15.0DEG
 Test Speed: HIGH
 Temperature:25.3°C
 Operators:DAMIN
 Test Date:2024-06-11

γ Range: 0 - 90DEG
 γ Interval: 1.0DEG
 Test System:EVERFINE GO-2000B_V1 SYSTEM V2.00.473
 Humidity:65.0%
 Test Distance:9.401m [K=1.0000]
 Remarks:

LUMINANCE LIMITATION CURVES

Test:U:220.22V I:0.0792A P:10.160W PF:0.5824 Freq:50.00Hz Lamp Flux:407.704x1 lm		
NAME:	TYPE:	WEIGHT:
SPEC.:	DIM.:	SERIAL No.:
MFR.: EVERFINE	SUR.:	Shielding Angle:



LUMINANCE cd/(m2)		
G (DEG)	C0/180	C90/270
85	0	154
80	3	116
75	6	113
70	7	126
65	16	190
60	238	421
55	524	652
50	821	924
45	2553	1307

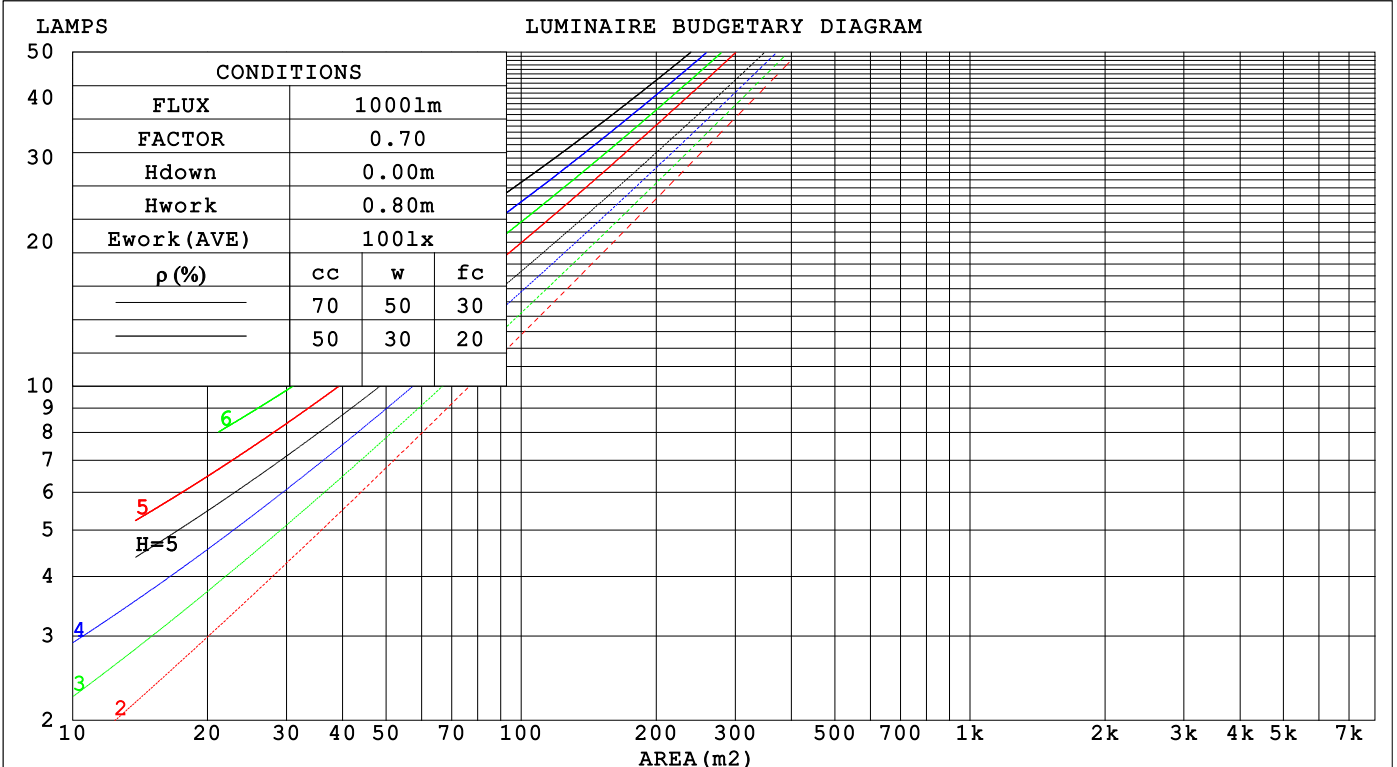
C Range: 0 - 360DEG
 C Interval: 15.0DEG
 Test Speed: HIGH
 Temperature:25.3°C
 Operators:DAMIN
 Test Date:2024-06-11

γ Range: 0 - 90DEG
 γ Interval: 1.0DEG
 Test System:EVERFINE GO-2000B_V1 SYSTEM V2.00.473
 Humidity:65.0%
 Test Distance:9.401m [K=1.0000]
 Remarks:

CU AND LUMINAIRE BUDGETARY ESTIMATE DIAGRAM

Test:U:220.22V I:0.0792A P:10.160W PF:0.5824 Freq:50.00Hz Lamp Flux:407.704x1 lm		
NAME:	TYPE:	WEIGHT:
SPEC.:	DIM.:	SERIAL No.:
MFR.: EVERFINE	SUR.:	Shielding Angle:

ρcc	80%			70%			50%			30%			10%			0
ρw	50%	30%	10%	50%	30%	10%	50%	30%	10%	50%	30%	10%	50%	30%	10%	0
ρfc	20%			20%			20%			20%			20%			0
RCR	RCR:Room Cavity Ratio Coefficients of Utilization(CU)															
0.0	1.19	1.19	1.19	1.16	1.16	1.16	1.11	1.11	1.11	1.06	1.06	1.06	1.02	1.02	1.02	.00
1.0	1.09	1.06	1.04	1.07	1.05	1.02	1.03	1.01	.99	.99	.98	.96	.96	.94	.93	.91
2.0	.00	.95	.91	.98	.94	.90	.95	.91	.88	.92	.89	.86	.89	.87	.84	.83
3.0	.91	.85	.81	.90	.84	.80	.87	.83	.79	.85	.81	.77	.82	.79	.76	.74
4.0	.84	.77	.72	.82	.76	.71	.80	.75	.71	.78	.73	.70	.76	.72	.69	.67
5.0	.77	.70	.65	.76	.69	.64	.74	.68	.64	.72	.67	.63	.70	.66	.62	.61
6.0	.70	.63	.58	.70	.63	.58	.68	.62	.57	.66	.61	.57	.65	.60	.57	.55
7.0	.65	.58	.53	.64	.57	.52	.63	.57	.52	.61	.56	.52	.60	.55	.52	.50
8.0	.60	.53	.48	.59	.52	.48	.58	.52	.48	.57	.51	.47	.56	.51	.47	.45
9.0	.55	.48	.44	.55	.48	.44	.54	.48	.43	.53	.47	.43	.52	.47	.43	.41
10.0	.51	.45	.40	.51	.44	.40	.50	.44	.40	.49	.44	.40	.48	.43	.40	.38



C Range: 0 - 360DEG
 C Interval: 15.0DEG
 Test Speed: HIGH
 Temperature:25.3°C
 Operators:DAMIN
 Test Date:2024-06-11

γ Range: 0 - 90DEG
 γ Interval: 1.0DEG
 Test System:EVERFINE GO-2000B_V1 SYSTEM V2.00.473
 Humidity:65.0%
 Test Distance:9.401m [K=1.0000]
 Remarks:

WEC AND CCEC

Test:U:220.22V I:0.0792A P:10.160W PF:0.5824 Freq:50.00Hz		
Lamp Flux:407.704x1 lm		
NAME:	TYPE:	WEIGHT:
SPEC.:	DIM.:	SERIAL No.:
MFR.: EVERFINE	SUR.:	Shielding Angle:

ρ_{CC}	80%			70%			50%			30%			10%			0
ρ_w	50%	30%	10%	50%	30%	10%	50%	30%	10%	50%	30%	10%	50%	30%	10%	0
ρ_{fc}	20%			20%			20%			20%			20%			0
RCR	RCR:Room Cavity Ratio						Wall Exitance Coefficients (WEC)									
0.0																
1.0	.206	.117	.037	.199	.114	.036	.187	.107	.034	.175	.101	.032	.164	.095	.031	
2.0	.201	.110	.034	.195	.108	.033	.184	.103	.032	.174	.098	.031	.165	.093	.029	
3.0	.194	.103	.031	.188	.101	.030	.179	.097	.029	.170	.093	.029	.162	.090	.028	
4.0	.185	.096	.028	.181	.095	.028	.173	.092	.027	.165	.089	.027	.158	.086	.026	
5.0	.177	.090	.026	.173	.089	.026	.166	.086	.025	.159	.084	.025	.153	.082	.025	
6.0	.169	.085	.024	.165	.084	.024	.159	.081	.024	.153	.079	.023	.147	.078	.023	
7.0	.161	.080	.023	.158	.079	.022	.152	.077	.022	.147	.075	.022	.142	.074	.022	
8.0	.154	.075	.021	.151	.074	.021	.146	.073	.021	.141	.071	.021	.136	.070	.020	
9.0	.147	.071	.020	.145	.070	.020	.140	.069	.020	.135	.068	.019	.131	.067	.019	
10.0	.141	.067	.019	.138	.067	.019	.134	.066	.019	.130	.065	.018	.126	.064	.018	

ρ_{CC}	80%			70%			50%			30%			10%			0
ρ_w	50%	30%	10%	50%	30%	10%	50%	30%	10%	50%	30%	10%	50%	30%	10%	0
ρ_{fc}	20%			20%			20%			20%			20%			0
RCR	RCR:Room Cavity Ratio						Ceiling Cavity Exitance Coefficients (CCEC)									
0.0	.190	.190	.190	.163	.163	.163	.111	.111	.111	.064	.064	.064	.020	.020	.020	
1.0	.173	.157	.143	.148	.135	.123	.101	.093	.085	.058	.054	.049	.019	.017	.016	
2.0	.160	.132	.109	.137	.114	.094	.094	.079	.066	.054	.046	.039	.017	.015	.013	
3.0	.150	.114	.085	.128	.098	.074	.088	.068	.052	.051	.040	.031	.016	.013	.010	
4.0	.141	.100	.068	.121	.086	.059	.083	.060	.042	.048	.035	.025	.015	.011	.008	
5.0	.134	.088	.055	.115	.077	.048	.079	.053	.034	.046	.031	.020	.015	.010	.007	
6.0	.127	.080	.046	.109	.069	.040	.075	.048	.028	.044	.028	.017	.014	.009	.006	
7.0	.121	.072	.038	.104	.063	.033	.072	.044	.024	.042	.026	.014	.014	.008	.005	
8.0	.116	.067	.033	.100	.058	.029	.069	.041	.020	.040	.024	.012	.013	.008	.004	
9.0	.111	.062	.028	.096	.054	.025	.066	.038	.018	.039	.022	.010	.012	.007	.003	
10.0	.106	.057	.025	.092	.050	.022	.064	.035	.015	.037	.021	.009	.012	.007	.003	

C Range: 0 - 360DEG
 C Interval: 15.0DEG
 Test Speed: HIGH
 Temperature:25.3°C
 Operators:DAMIN
 Test Date:2024-06-11

γ Range: 0 - 90DEG
 γ Interval: 1.0DEG
 Test System:EVERFINE GO-2000B_V1 SYSTEM V2.00.473
 Humidity:65.0%
 Test Distance:9.401m [K=1.0000]
 Remarks:

UGR(Unified Glare Rating) Table

Test:U:220.22V I:0.0792A P:10.160W PF:0.5824 Freq:50.00Hz										
Lamp Flux:407.704x1 lm										
NAME:			TYPE:				WEIGHT:			
SPEC.:			DIM.:				SERIAL No.:			
MFR.: EVERFINE			SUR.:				Shielding Angle:			
ceiling/cavity	0.7	0.7	0.5	0.5	0.3	0.7	0.7	0.5	0.5	0.3
walls	0.5	0.3	0.5	0.3	0.3	0.5	0.3	0.5	0.3	0.3
working plane	0.2	0.2	0.2	0.2	0.2	0.2	0.2	0.2	0.2	0.2
Room dimensions	Viewed crosswise					Viewed endwise				
x = 2H y = 2H	17.5	18.7	17.8	18.9	19.0	16.2	17.4	16.5	17.6	17.7
3H	17.3	18.4	17.6	18.6	18.8	16.1	17.1	16.3	17.3	17.5
4H	17.2	18.2	17.5	18.5	18.7	16.0	17.0	16.3	17.2	17.4
6H	17.1	18.1	17.5	18.3	18.6	15.9	16.8	16.2	17.1	17.3
8H	17.1	18.0	17.4	18.3	18.5	15.9	16.8	16.2	17.0	17.3
12H	17.1	17.9	17.4	18.2	18.5	15.8	16.7	16.2	17.0	17.2
4H 2H	17.3	18.3	17.6	18.5	18.7	16.0	17.0	16.3	17.2	17.5
3H	17.1	17.9	17.4	18.2	18.5	15.8	16.7	16.2	17.0	17.3
4H	17.0	17.8	17.4	18.1	18.4	15.8	16.5	16.1	16.8	17.2
6H	16.9	17.6	17.3	17.9	18.3	15.7	16.4	16.1	16.7	17.1
8H	16.9	17.5	17.3	17.8	18.2	15.7	16.3	16.1	16.6	17.0
12H	16.8	17.4	17.2	17.8	18.2	15.6	16.2	16.1	16.6	17.0
8H 4H	16.9	17.5	17.3	17.8	18.2	15.6	16.3	16.0	16.6	17.0
6H	16.8	17.3	17.2	17.7	18.1	15.6	16.1	16.0	16.5	16.9
8H	16.7	17.2	17.2	17.6	18.0	15.5	16.0	16.0	16.4	16.8
12H	16.7	17.1	17.1	17.5	18.0	15.5	15.9	16.0	16.3	16.8
12H 4H	16.8	17.4	17.2	17.8	18.2	15.6	16.2	16.0	16.5	16.9
6H	16.7	17.2	17.2	17.6	18.0	15.5	16.0	16.0	16.4	16.8
8H	16.7	17.1	17.1	17.5	18.0	15.5	15.9	16.0	16.3	16.8
Variations with the observer position at spacings(CIE Pub.117):										
S = 1.0H	+ 2.5 / - 9.1					+ 3.0 / - 5.5				
1.5H	+ 3.7 / - 6.9					+ 4.9 / - 4.5				
2.0H	+ 7.2 / - 9.4					+ 4.1 / - 6.2				

CIE Pub.117, 407.7 lm Total Lamp Luminous Flux Correct (8log(F/F0) = -3.1)
 Area: 0.1 m2

C Range: 0 - 360DEG
 C Interval: 15.0DEG
 Test Speed: HIGH
 Temperature:25.3°C
 Operators:DAMIN
 Test Date:2024-06-11

γ Range: 0 - 90DEG
 γ Interval: 1.0DEG
 Test System:EVERFINE GO-2000B_V1 SYSTEM V2.00.473
 Humidity:65.0%
 Test Distance:9.401m [K=1.0000]
 Remarks:

UTILIZATION FACTORS TABLE

Test:U:220.22V I:0.0792A P:10.160W PF:0.5824 Freq:50.00Hz Lamp Flux:407.704x1 lm		
NAME:	TYPE:	WEIGHT:
SPEC.:	DIM.:	SERIAL No.:
MFR.: EVERFINE	SUR.:	Shielding Angle:

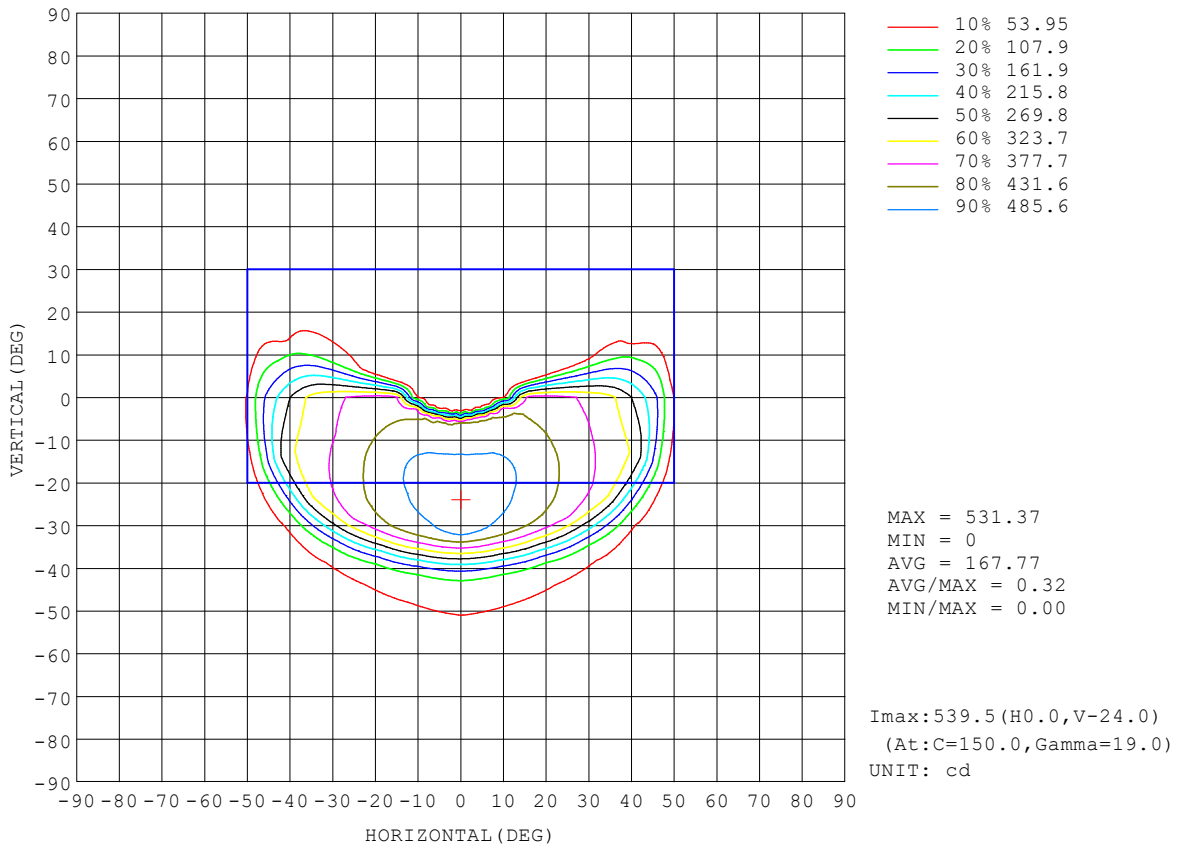
REFLECTANCE										
Ceiling	0.8	0.8	0.8	0.7	0.7	0.7	0.5	0.5	0.5	0
Walls	0.7	0.5	0.3	0.7	0.5	0.3	0.7	0.5	0.3	0
Working plane	0.2	0.2	0.2	0.2	0.2	0.2	0.2	0.2	0.2	0
ROOM INDEX	UTILIZATION FACTORS (PERCENT) $k(RI) \times RCR = 5$									
$k = 0.60$	79	71	66	78	70	66	77	70	66	61
0.80	87	80	75	87	80	75	85	79	75	70
1.00	94	87	82	93	86	82	91	87	82	77
1.25	99	93	88	98	92	88	96	91	87	82
1.50	102	97	92	101	96	92	99	94	91	86
2.00	106	101	97	105	100	97	102	98	95	89
2.50	108	104	100	106	102	99	103	100	97	91
3.00	110	106	103	108	105	102	105	102	100	93
4.00	112	109	106	110	107	105	106	104	102	95
5.00	114	111	109	111	109	107	107	106	104	96
ROOM INDEX	UF(total)									Direct
According to DIN EN 13032-2 2004			Suspended				SHRNOM = 1.25			

C Range: 0 - 360DEG
 C Interval: 15.0DEG
 Test Speed: HIGH
 Temperature:25.3°C
 Operators:DAMIN
 Test Date:2024-06-11

γ Range: 0 - 90DEG
 γ Interval: 1.0DEG
 Test System:EVERFINE GO-2000B_V1 SYSTEM V2.00.473
 Humidity:65.0%
 Test Distance:9.401m [K=1.0000]
 Remarks:

ISOCANDELA DIAGRAM

Test:U:220.22V I:0.0792A P:10.160W PF:0.5824 Freq:50.00Hz Lamp Flux:407.704x1 lm		
NAME:	TYPE:	WEIGHT:
SPEC.:	DIM.:	SERIAL No.:
MFR.: EVERFINE	SUR.:	Shielding Angle:

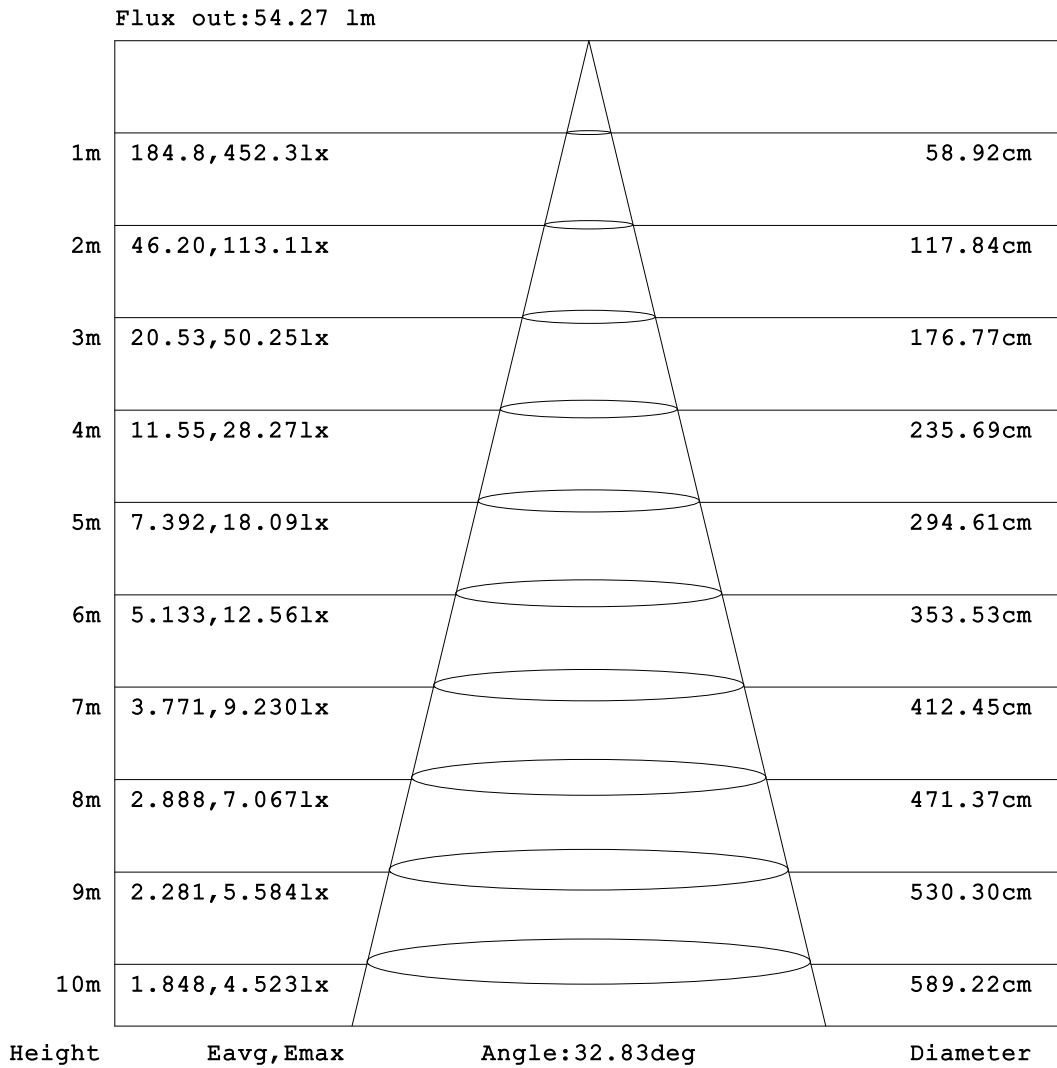


C Range: 0 - 360DEG
 C Interval: 15.0DEG
 Test Speed: HIGH
 Temperature:25.3°C
 Operators:DAMIN
 Test Date:2024-06-11

γ Range: 0 - 90DEG
 γ Interval: 1.0DEG
 Test System:EVERFINE GO-2000B_V1 SYSTEM V2.00.473
 Humidity:65.0%
 Test Distance:9.401m [K=1.0000]
 Remarks:

AAI Figure

Test:U:220.22V I:0.0792A P:10.160W PF:0.5824 Freq:50.00Hz Lamp Flux:407.704x1 lm		
NAME:	TYPE:	WEIGHT:
SPEC.:	DIM.:	SERIAL No.:
MFR.: EVERFINE	SUR.:	Shielding Angle:



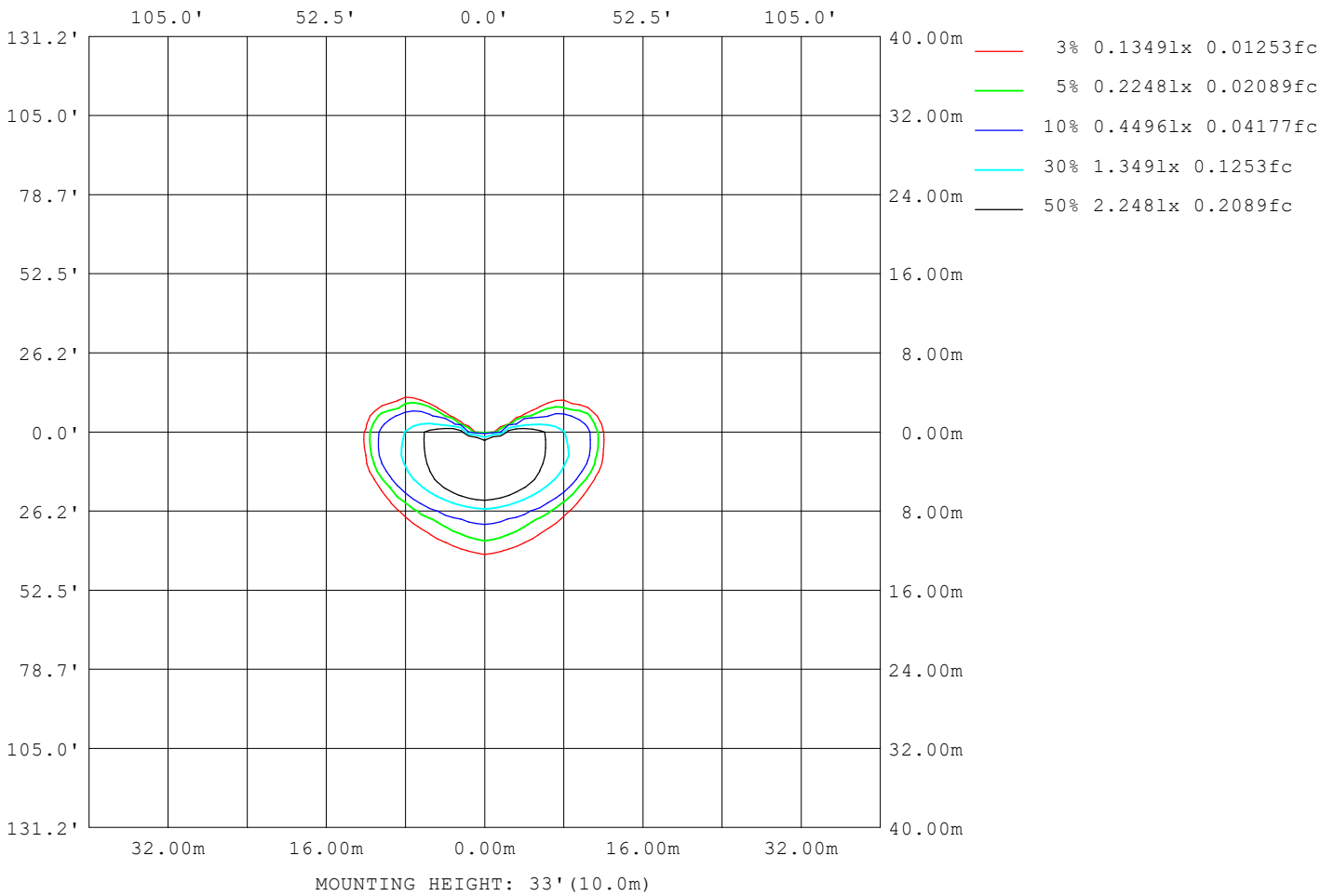
Note:The Curves indicate the illuminated area and the average illumination when the luminaire is at different distance.

C Range: 0 - 360DEG
 C Interval: 15.0DEG
 Test Speed: HIGH
 Temperature:25.3°C
 Operators:DAMIN
 Test Date:2024-06-11

γ Range: 0 - 90DEG
 γ Interval: 1.0DEG
 Test System:EVERFINE GO-2000B_V1 SYSTEM V2.00.473
 Humidity:65.0%
 Test Distance:9.401m [K=1.0000]
 Remarks:

ISOLUX DIAGRAM

Test:U:220.22V I:0.0792A P:10.160W PF:0.5824 Freq:50.00Hz Lamp Flux:407.704x1 lm		
NAME:	TYPE:	WEIGHT:
SPEC.:	DIM.:	SERIAL No.:
MFR.: EVERFINE	SUR.:	Shielding Angle:



C Range: 0 - 360DEG
 C Interval: 15.0DEG
 Test Speed: HIGH
 Temperature:25.3°C
 Operators:DAMIN
 Test Date:2024-06-11

γ Range: 0 - 90DEG
 γ Interval: 1.0DEG
 Test System:EVERFINE GO-2000B_V1 SYSTEM V2.00.473
 Humidity:65.0%
 Test Distance:9.401m [K=1.0000]
 Remarks:

LED Avg.L Report

Test:U:220.22V I:0.0792A P:10.160W PF:0.5824 Freq:50.00Hz Lamp Flux:407.704x1 lm		
NAME:	TYPE:	WEIGHT:
SPEC.:	DIM.:	SERIAL No.:
MFR.: EVERFINE	SUR.:	Shielding Angle:

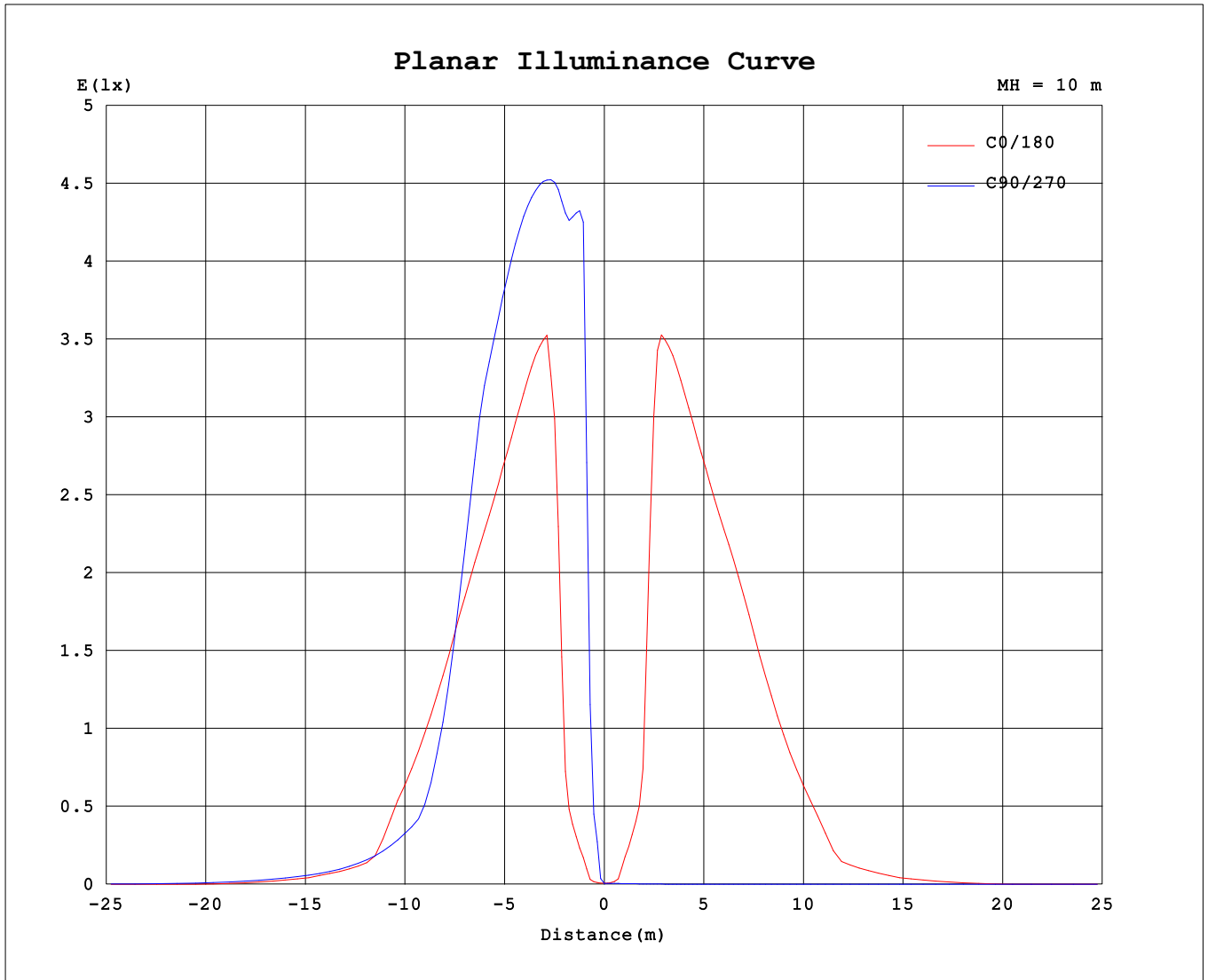
AvgL	cd/m2
L_0~180 (65) av	11
L_0~180 (75) av	3
L_0~180 (85) av	0
L_90~270 (65) av	83
L_90~270 (75) av	50
L_90~270 (85) av	68
L_45 (65) av	93
L_45 (75) av	17
L_45 (85) av	32

Standard: GB/T 29293-2012

C Range: 0 - 360DEG
 C Interval: 15.0DEG
 Test Speed: HIGH
 Temperature:25.3°C
 Operators:DAMIN
 Test Date:2024-06-11

γ Range: 0 - 90DEG
 γ Interval: 1.0DEG
 Test System:EVERFINE GO-2000B_V1 SYSTEM V2.00.473
 Humidity:65.0%
 Test Distance:9.401m [K=1.0000]
 Remarks:

Planar Illuminance Curve



C Range: 0 - 360DEG
 C Interval: 15.0DEG
 Test Speed: HIGH
 Temperature: 25.3°C
 Operators: DAMIN
 Test Date: 2024-06-11

γ Range: 0 - 90DEG
 γ Interval: 1.0DEG
 Test System: EVERFINE GO-2000B_V1 SYSTEM V2.00.473
 Humidity: 65.0%
 Test Distance: 9.401m [K=1.0000]
 Remarks:

