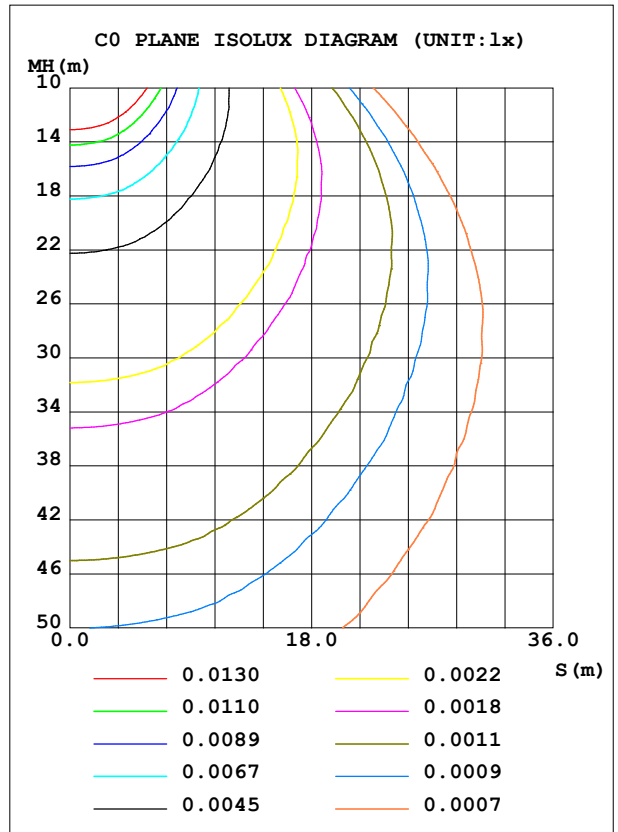
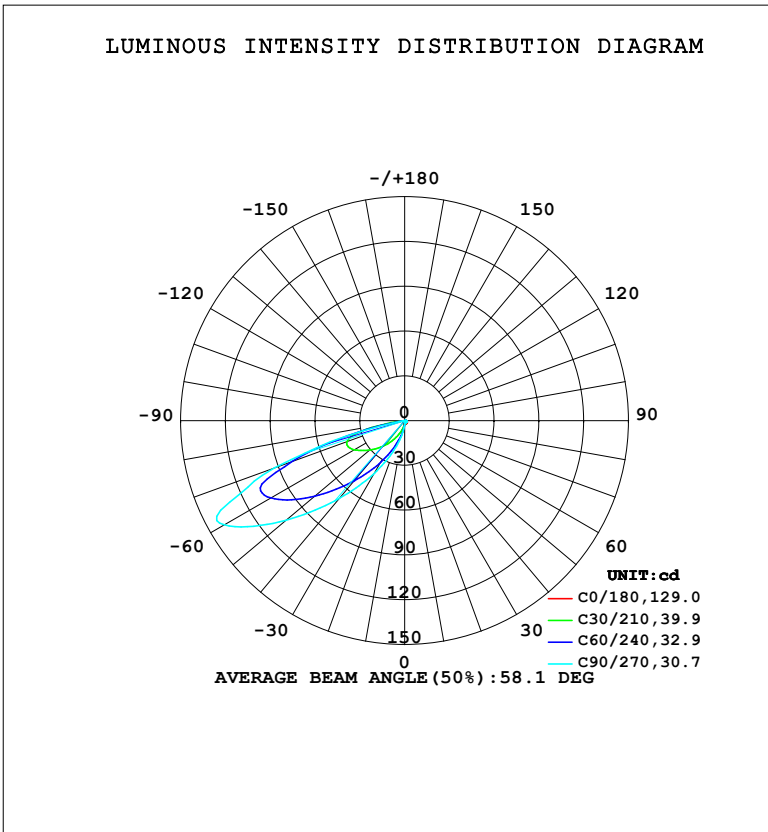


**LUMINAIRE PHOTOMETRIC TEST REPORT**

Test:U:220.31V I:0.0594A P:5.8464W PF:0.4465 Freq:50.00Hz Lamp Flux:116.461x1 lm		
NAME:	TYPE:	WEIGHT:
SPEC.:	DIM.:	SERIAL No.:
MFR.: EVERFINE	SUR.:	Shielding Angle:

DATA OF LAMP		PHOTOMETRIC DATA				Eff: 19.92 lm/W
MODEL	SL16-170	I <sub>max</sub> (cd)	142.6	S/MH (C0/180)	1.35	
NOMINAL POWER (W)	5	LOR (%)	100.0	S/MH (C90/270)	5.47	
RATED VOLTAGE (V)	220	TOTAL FLUX (lm)	116.46	η UP, DN (C0-180)	0.0, 2.4	
NOMINAL FLUX (lm)	116.461	CIE CLASS	DIRECT	η UP, DN (C180-360)	0.0, 97.6	
LAMPS INSIDE	1	η up (%)	0.0	CIBSE SHR NOM	0.00	
TEST VOLTAGE (V)	219.5	η down (%)	100.0	CIBSE SHR MAX	0.05	



C Range: 0 - 360DEG  
 C Interval: 15.0DEG  
 Test Speed: HIGH  
 Temperature: 25.3°C  
 Operators: DAMIN  
 Test Date: 2024-05-09

γ Range: 0 - 90DEG  
 γ Interval: 1.0DEG  
 Test System: EVERFINE GO-2000B\_V1 SYSTEM V2.00.473  
 Humidity: 65.0%  
 Test Distance: 9.401m [K=1.0000]  
 Remarks:

ZONAL FLUX DIAGRAM

ZONAL FLUX DIAGRAM:

$\gamma$	C0	C45	C90	C135	C180	C225	C270	C315	$\gamma$	$\Phi$ zone	$\Phi$ total	%lum,lamp
10	2.239	1.583	1.539	1.546	2.208	5.827	8.227	5.834	0- 10	0.2793	0.2793	0.24,0.24
20	2.154	1.388	1.316	1.358	2.136	13.25	20.98	13.25	10- 20	1.509	1.788	1.54,1.54
30	2.003	1.260	1.262	1.226	2.009	24.31	40.66	24.32	20- 30	4.437	6.225	5.35,5.35
40	1.858	1.157	1.304	1.117	1.882	38.69	67.83	38.76	30- 40	9.859	16.08	13.8,13.8
50	1.682	1.083	1.322	1.038	1.724	54.96	103.8	55.89	40- 50	18.29	34.38	29.5,29.5
60	1.307	0.9127	1.089	0.8628	1.367	71.34	139.7	72.73	50- 60	29.38	63.75	54.7,54.7
70	0.7751	0.6209	0.7874	0.5614	0.8100	69.48	92.72	70.38	60- 70	35.13	98.88	84.9,84.9
80	0.2121	0.2979	0.4267	0.2472	0.1872	8.971	1.638	9.101	70- 80	16.90	115.8	99.4,99.4
90	0	0.0974	0.2284	0.1087	0	0	0	0	80- 90	0.6760	116.5	100,100
100									90-100			
110									100-110			
120									110-120			
130									120-130			
140									130-140			
150									140-150			
160									150-160			
170									160-170			
180									170-180			
DEG	LUMINOUS INTENSITY:cd									UNIT:lm		

Conical surface Flux(90deg): 23.975 lm

%lum = 20.6%

%lamp = 20.6%

Conical surface Flux(130deg): 81.974 lm

%lum = 70.4%

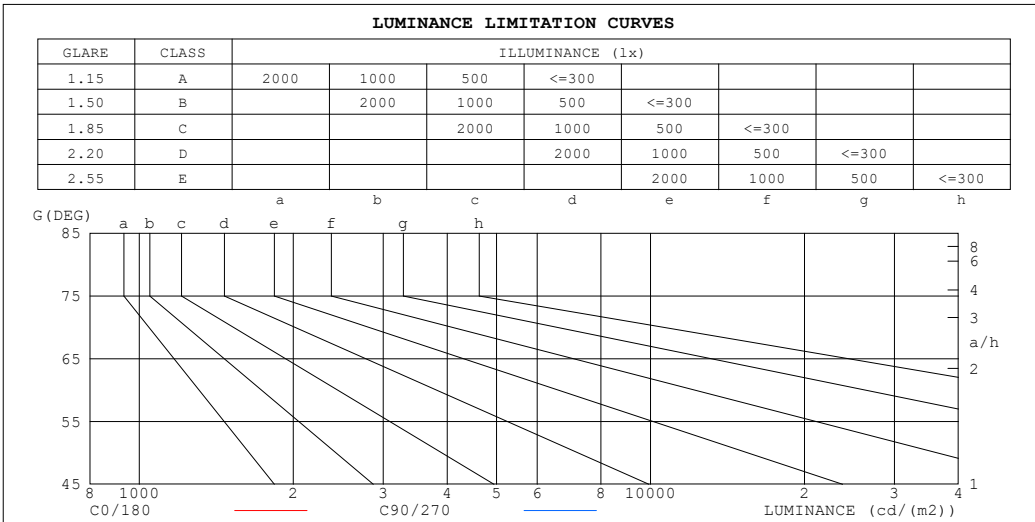
%lamp = 70.4%

C Range: 0 - 360DEG  
 C Interval: 15.0DEG  
 Test Speed: HIGH  
 Temperature:25.3°C  
 Operators:DAMIN  
 Test Date:2024-05-09

$\gamma$  Range: 0 - 90DEG  
 $\gamma$  Interval: 1.0DEG  
 Test System:EVERFINE GO-2000B\_V1 SYSTEM V2.00.473  
 Humidity:65.0%  
 Test Distance:9.401m [K=1.0000]  
 Remarks:

**LUMINANCE LIMITATION CURVES**

Test:U:220.31V I:0.0594A P:5.8464W PF:0.4465 Freq:50.00Hz Lamp Flux:116.461x1 lm		
NAME:	TYPE:	WEIGHT:
SPEC.:	DIM.:	SERIAL No.:
MFR.: EVERFINE	SUR.:	Shielding Angle:



LUMINANCE cd/(m2)		
G (DEG)	C0/180	C90/270
85	97	297
80	122	246
75	168	216
70	226	231
65	252	241
60	260	218
55	264	213
50	260	206
45	250	180

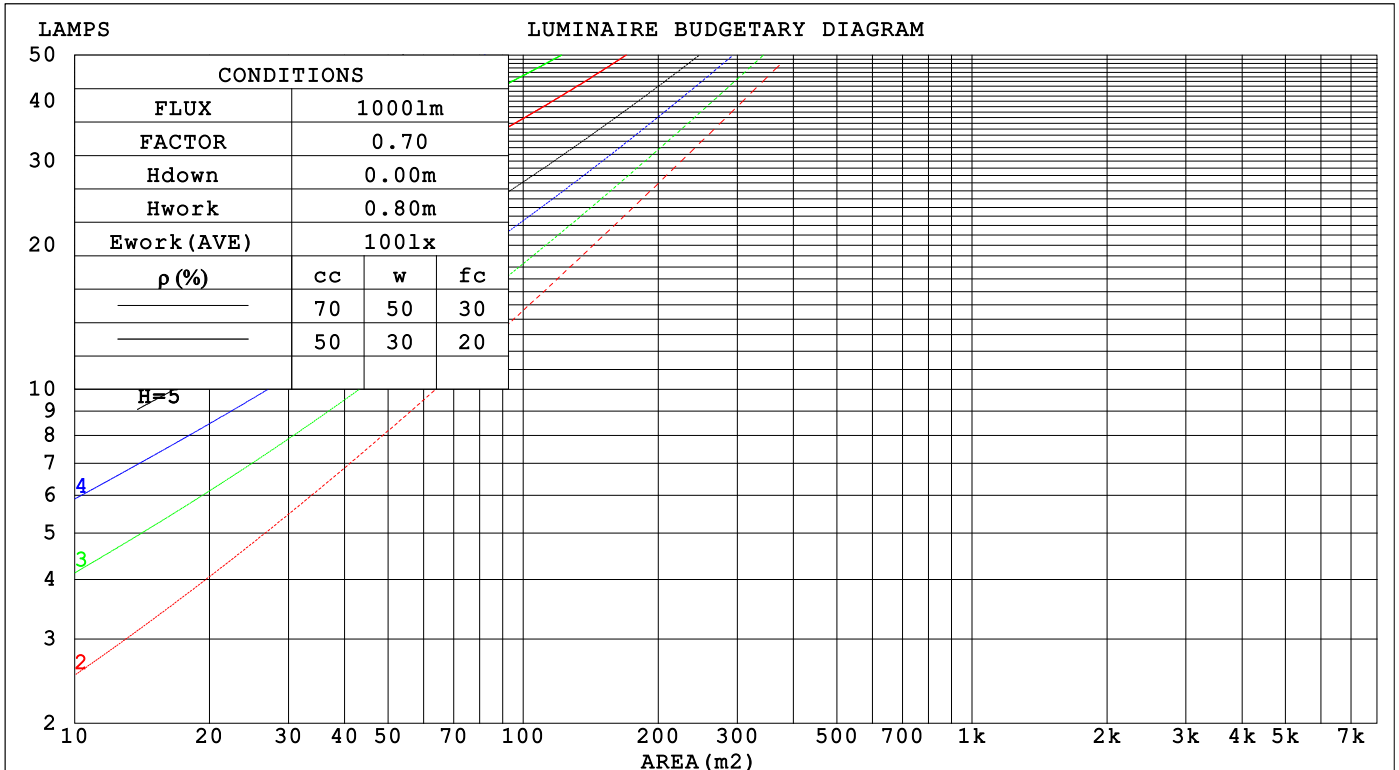
C Range: 0 - 360DEG  
 C Interval: 15.0DEG  
 Test Speed: HIGH  
 Temperature:25.3°C  
 Operators:DAMIN  
 Test Date:2024-05-09

γ Range: 0 - 90DEG  
 γ Interval: 1.0DEG  
 Test System:EVERFINE GO-2000B\_V1 SYSTEM V2.00.473  
 Humidity:65.0%  
 Test Distance:9.401m [K=1.0000]  
 Remarks:

**CU AND LUMINAIRE BUDGETARY ESTIMATE DIAGRAM**

Test:U:220.31V I:0.0594A P:5.8464W PF:0.4465 Freq:50.00Hz		
Lamp Flux:116.461x1 lm		
NAME:	TYPE:	WEIGHT:
SPEC.:	DIM.:	SERIAL No.:
MFR.: EVERFINE	SUR.:	Shielding Angle:

$\rho_{cc}$	80%			70%			50%			30%			10%			0
$\rho_w$	50%	30%	10%	50%	30%	10%	50%	30%	10%	50%	30%	10%	50%	30%	10%	0
$\rho_{fc}$	20%			20%			20%			20%			20%			0
RCR	RCR:Room Cavity Ratio      Coefficients of Utilization(CU)															
0.0	1.19	1.19	1.19	1.16	1.16	1.16	1.11	1.11	1.11	1.06	1.06	1.06	1.02	1.02	1.02	1.00
1.0	.99	.94	.89	.97	.92	.87	.93	.88	.84	.88	.85	.82	.85	.82	.79	.77
2.0	.81	.72	.65	.79	.71	.64	.75	.68	.62	.72	.66	.61	.69	.64	.59	.57
3.0	.67	.56	.48	.65	.55	.47	.62	.53	.46	.59	.52	.45	.56	.50	.45	.42
4.0	.56	.45	.36	.55	.44	.36	.52	.43	.35	.49	.41	.35	.47	.40	.34	.31
5.0	.48	.37	.28	.47	.36	.28	.44	.35	.28	.42	.34	.27	.40	.33	.27	.24
6.0	.41	.30	.22	.40	.30	.22	.38	.29	.22	.36	.28	.22	.35	.27	.21	.19
7.0	.36	.26	.18	.35	.25	.18	.34	.24	.18	.32	.24	.18	.30	.23	.17	.15
8.0	.32	.22	.15	.31	.22	.15	.30	.21	.15	.28	.20	.15	.27	.20	.14	.12
9.0	.29	.19	.13	.28	.19	.12	.27	.18	.12	.26	.18	.12	.25	.17	.12	.10
10.0	.26	.17	.11	.25	.17	.11	.24	.16	.11	.23	.16	.10	.22	.15	.10	.08



C Range: 0 - 360DEG  
 C Interval: 15.0DEG  
 Test Speed: HIGH  
 Temperature:25.3°C  
 Operators:DAMIN  
 Test Date:2024-05-09

$\gamma$  Range: 0 - 90DEG  
 $\gamma$  Interval: 1.0DEG  
 Test System:EVERFINE GO-2000B\_V1 SYSTEM V2.00.473  
 Humidity:65.0%  
 Test Distance:9.401m [K=1.0000]  
 Remarks:

**WEC AND CCEC**

Test:U:220.31V I:0.0594A P:5.8464W PF:0.4465 Freq:50.00Hz								
Lamp Flux:116.461x1 lm								
NAME:			TYPE:			WEIGHT:		
SPEC.:			DIM.:			SERIAL No.:		
MFR.: EVERFINE			SUR.:			Shielding Angle:		

ρ <sub>CC</sub>	80%			70%			50%			30%			10%			0
ρ <sub>w</sub>	50%	30%	10%	50%	30%	10%	50%	30%	10%	50%	30%	10%	50%	30%	10%	0
ρ <sub>fc</sub>	20%			20%			20%			20%			20%			0
RCR	RCR:Room Cavity Ratio						Wall Exitance Coefficients (WEC)									
0.0																
1.0	.398	.226	.072	.390	.223	.071	.377	.216	.069	.364	.210	.067	.352	.204	.066	
2.0	.381	.209	.064	.374	.206	.064	.362	.201	.062	.350	.196	.061	.340	.192	.061	
3.0	.349	.186	.056	.343	.184	.055	.332	.180	.055	.321	.176	.054	.312	.173	.053	
4.0	.317	.165	.048	.312	.163	.048	.301	.160	.048	.292	.157	.047	.283	.154	.047	
5.0	.288	.147	.042	.283	.145	.042	.274	.143	.042	.265	.140	.042	.258	.138	.041	
6.0	.262	.131	.038	.258	.130	.038	.250	.128	.037	.242	.126	.037	.235	.124	.037	
7.0	.240	.119	.034	.236	.118	.034	.229	.116	.033	.222	.114	.033	.216	.112	.033	
8.0	.221	.108	.030	.218	.107	.030	.211	.105	.030	.205	.104	.030	.199	.102	.030	
9.0	.204	.099	.028	.201	.098	.028	.196	.097	.027	.190	.095	.027	.185	.094	.027	
10.0	.190	.091	.025	.187	.090	.025	.182	.089	.025	.177	.088	.025	.172	.087	.025	

ρ <sub>CC</sub>	80%			70%			50%			30%			10%			0
ρ <sub>w</sub>	50%	30%	10%	50%	30%	10%	50%	30%	10%	50%	30%	10%	50%	30%	10%	0
ρ <sub>fc</sub>	20%			20%			20%			20%			20%			0
RCR	RCR:Room Cavity Ratio						Ceiling Cavity Exitance Coefficients (CCEC)									
0.0																
1.0	.190	.190	.190	.163	.163	.163	.111	.111	.111	.064	.064	.064	.020	.020	.020	
2.0	.186	.155	.127	.159	.133	.110	.109	.092	.076	.063	.053	.044	.020	.017	.014	
3.0	.184	.131	.087	.158	.113	.075	.108	.078	.053	.062	.046	.031	.020	.015	.010	
4.0	.180	.115	.063	.154	.099	.055	.106	.069	.038	.061	.040	.023	.020	.013	.007	
5.0	.174	.103	.048	.149	.089	.042	.102	.062	.029	.059	.036	.017	.019	.012	.006	
6.0	.166	.093	.039	.143	.080	.034	.098	.056	.024	.057	.033	.014	.018	.011	.005	
7.0	.159	.085	.032	.136	.074	.028	.094	.052	.020	.055	.030	.012	.018	.010	.004	
8.0	.151	.078	.028	.130	.068	.024	.090	.048	.017	.052	.028	.010	.017	.009	.003	
9.0	.143	.073	.024	.124	.063	.021	.085	.044	.015	.050	.026	.009	.016	.009	.003	
10.0	.136	.068	.022	.117	.059	.019	.081	.041	.013	.047	.024	.008	.015	.008	.003	
	.130	.064	.020	.112	.055	.017	.077	.039	.012	.045	.023	.007	.015	.008	.002	

C Range: 0 - 360DEG  
 C Interval: 15.0DEG  
 Test Speed: HIGH  
 Temperature:25.3°C  
 Operators:DAMIN  
 Test Date:2024-05-09

γ Range: 0 - 90DEG  
 γ Interval: 1.0DEG  
 Test System:EVERFINE GO-2000B\_V1 SYSTEM V2.00.473  
 Humidity:65.0%  
 Test Distance:9.401m [K=1.0000]  
 Remarks:

**UGR(Unified Glare Rating) Table**

Test:U:220.31V I:0.0594A P:5.8464W PF:0.4465 Freq:50.00Hz										
Lamp Flux:116.46lx1 lm										
NAME:			TYPE:				WEIGHT:			
SPEC.:			DIM.:				SERIAL No.:			
MFR.: EVERFINE			SUR.:				Shielding Angle:			
ceiling/cavity	0.7	0.7	0.5	0.5	0.3	0.7	0.7	0.5	0.5	0.3
walls	0.5	0.3	0.5	0.3	0.3	0.5	0.3	0.5	0.3	0.3
working plane	0.2	0.2	0.2	0.2	0.2	0.2	0.2	0.2	0.2	0.2
Room dimensions	Viewed crosswise					Viewed endwise				
x = 2H y = 2H	4.2	6.2	4.5	6.4	6.6	4.7	6.6	5.0	6.9	7.1
3H	6.2	8.0	6.6	8.3	8.6	6.7	8.5	7.0	8.7	9.0
4H	6.9	8.6	7.3	8.9	9.2	7.4	9.1	7.8	9.4	9.7
6H	7.2	8.8	7.6	9.1	9.4	8.2	9.8	8.5	10.1	10.4
8H	7.3	8.9	7.6	9.2	9.5	8.4	10.0	8.8	10.3	10.6
12H	7.3	8.8	7.7	9.1	9.5	8.7	10.2	9.1	10.5	10.9
4H 2H	4.9	6.6	5.2	6.9	7.2	5.2	7.0	5.6	7.2	7.5
3H	7.0	8.6	7.4	8.9	9.2	7.4	9.0	7.8	9.3	9.6
4H	7.9	9.3	8.3	9.6	9.9	8.3	9.7	8.7	10.1	10.4
6H	8.3	9.5	8.7	9.9	10.3	9.2	10.5	9.6	10.8	11.2
8H	8.4	9.6	8.8	9.9	10.3	9.6	10.7	10.0	11.1	11.5
12H	8.4	9.5	8.9	9.9	10.3	9.9	11.0	10.4	11.4	11.8
8H 4H	8.2	9.3	8.6	9.7	10.1	8.6	9.8	9.0	10.1	10.5
6H	8.8	9.8	9.3	10.2	10.6	9.7	10.7	10.2	11.1	11.5
8H	9.0	9.9	9.5	10.3	10.8	10.2	11.1	10.7	11.5	12.0
12H	9.1	9.8	9.6	10.3	10.8	10.7	11.4	11.2	11.9	12.3
12H 4H	8.2	9.3	8.7	9.7	10.1	8.6	9.7	9.1	10.1	10.5
6H	9.0	9.8	9.4	10.2	10.7	9.8	10.6	10.3	11.1	11.5
8H	9.2	9.9	9.7	10.4	10.9	10.3	11.1	10.8	11.5	12.0
Variations with the observer position at spacings(CIE Pub.117):										
S = 1.0H	+ 0.2 / - 0.1					+ 0.1 / - 0.2				
1.5H	+ 0.6 / - 0.3					+ 0.3 / - 0.4				
2.0H	+ 0.8 / - 0.3					+ 0.2 / - 0.3				

CIE Pub.117, 116.5 lm Total Lamp Luminous Flux Correct (8log(F/F0) = -7.5)  
 Area: 0.01 m2

C Range: 0 - 360DEG  
 C Interval: 15.0DEG  
 Test Speed: HIGH  
 Temperature:25.3°C  
 Operators:DAMIN  
 Test Date:2024-05-09

γ Range: 0 - 90DEG  
 γ Interval: 1.0DEG  
 Test System:EVERFINE GO-2000B\_V1 SYSTEM V2.00.473  
 Humidity:65.0%  
 Test Distance:9.401m [K=1.0000]  
 Remarks:

**UTILIZATION FACTORS TABLE**

Test:U:220.31V I:0.0594A P:5.8464W PF:0.4465 Freq:50.00Hz Lamp Flux:116.461x1 lm		
NAME:	TYPE:	WEIGHT:
SPEC.:	DIM.:	SERIAL No.:
MFR.: EVERFINE	SUR.:	Shielding Angle:

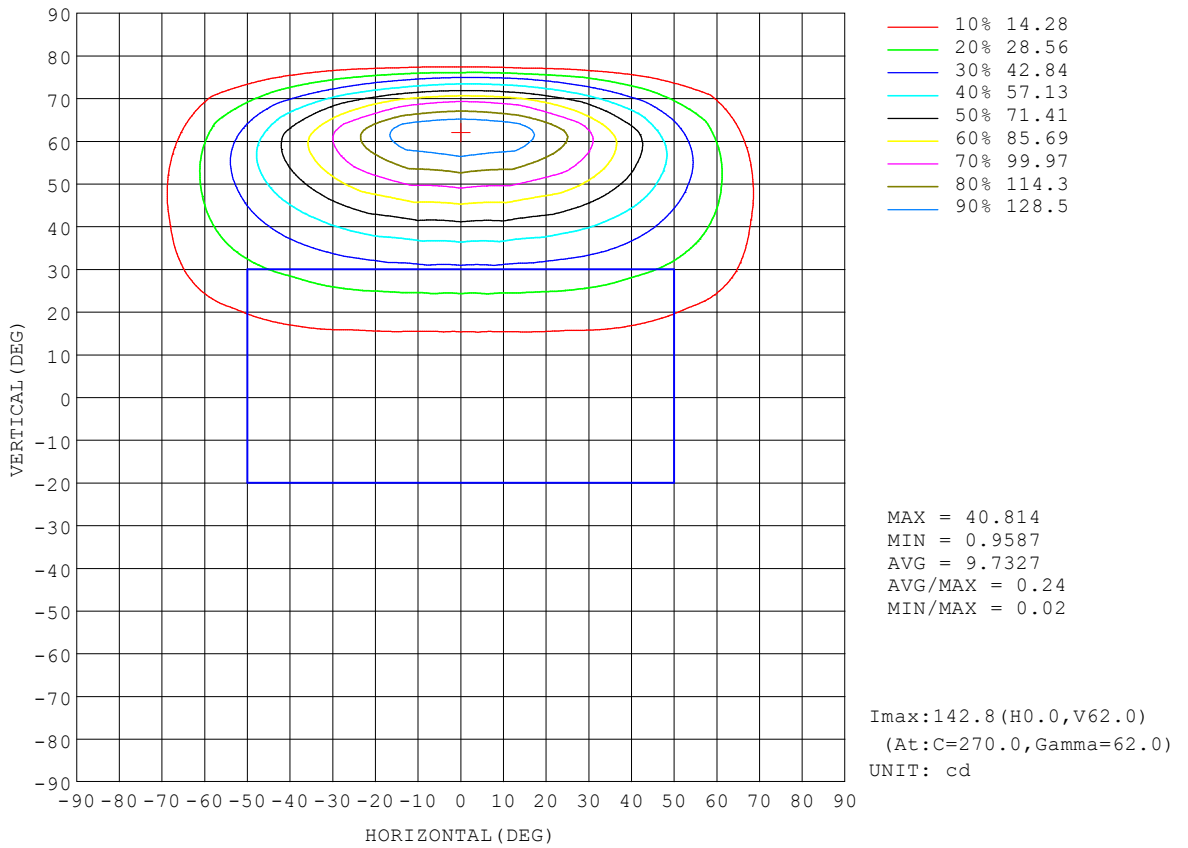
REFLECTANCE										
Ceiling	0.8	0.8	0.8	0.7	0.7	0.7	0.5	0.5	0.5	0
Walls	0.7	0.5	0.3	0.7	0.5	0.3	0.7	0.5	0.3	0
Working plane	0.2	0.2	0.2	0.2	0.2	0.2	0.2	0.2	0.2	0
ROOM INDEX	UTILIZATION FACTORS (PERCENT) $k(RI) \times RCR = 5$									
k = 0.60	40	26	17	39	25	17	38	25	17	8
0.80	50	35	25	49	35	25	47	34	25	16
1.00	60	44	34	58	44	34	55	46	34	24
1.25	68	54	44	66	53	43	63	51	42	33
1.50	75	61	51	73	60	50	69	58	49	40
2.00	84	72	63	82	71	63	78	69	61	51
2.50	91	80	72	88	78	71	84	75	69	59
3.00	95	86	79	93	84	78	88	81	75	65
4.00	102	94	88	99	92	87	94	89	84	74
5.00	105	99	94	103	97	92	98	93	89	79
ROOM INDEX	UF(total)									Direct
According to DIN EN 13032-2 2004			Suspended				SHRNOM = 1.25			

C Range: 0 - 360DEG  
 C Interval: 15.0DEG  
 Test Speed: HIGH  
 Temperature:25.3°C  
 Operators:DAMIN  
 Test Date:2024-05-09

$\gamma$  Range: 0 - 90DEG  
 $\gamma$  Interval: 1.0DEG  
 Test System:EVERFINE GO-2000B\_V1 SYSTEM V2.00.473  
 Humidity:65.0%  
 Test Distance:9.401m [K=1.0000]  
 Remarks:

**ISOCANDELA DIAGRAM**

Test:U:220.31V I:0.0594A P:5.8464W PF:0.4465 Freq:50.00Hz Lamp Flux:116.461x1 lm		
NAME:	TYPE:	WEIGHT:
SPEC.:	DIM.:	SERIAL No.:
MFR.: EVERFINE	SUR.:	Shielding Angle:



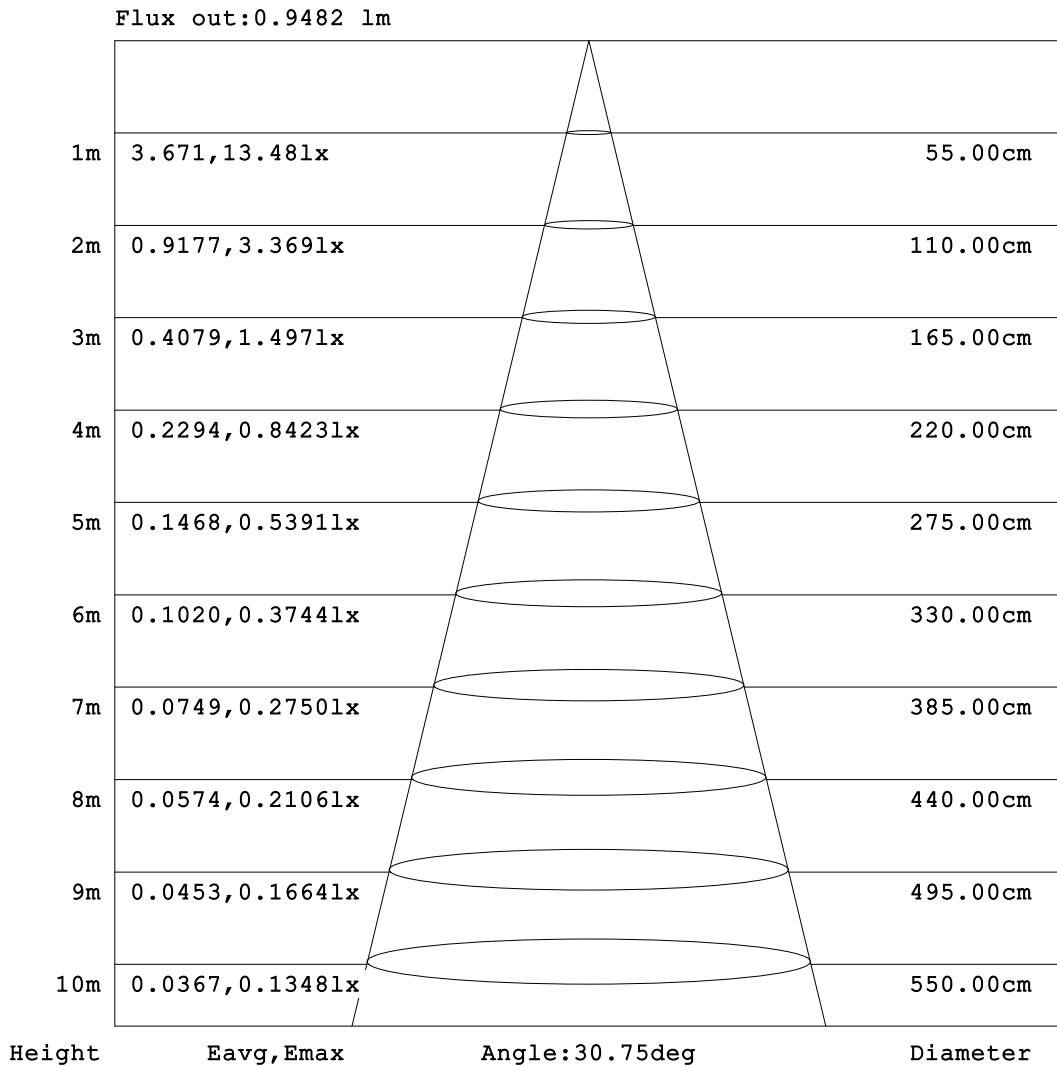
C Range: 0 - 360DEG  
 C Interval: 15.0DEG  
 Test Speed: HIGH  
 Temperature:25.3°C  
 Operators:DAMIN  
 Test Date:2024-05-09

γ Range: 0 - 90DEG  
 γ Interval: 1.0DEG  
 Test System:EVERFINE GO-2000B\_V1 SYSTEM V2.00.473  
 Humidity:65.0%  
 Test Distance:9.401m [K=1.0000]  
 Remarks:



**AAI Figure**

Test:U:220.31V I:0.0594A P:5.8464W PF:0.4465 Freq:50.00Hz Lamp Flux:116.461x1 lm		
NAME:	TYPE:	WEIGHT:
SPEC.:	DIM.:	SERIAL No.:
MFR.: EVERFINE	SUR.:	Shielding Angle:



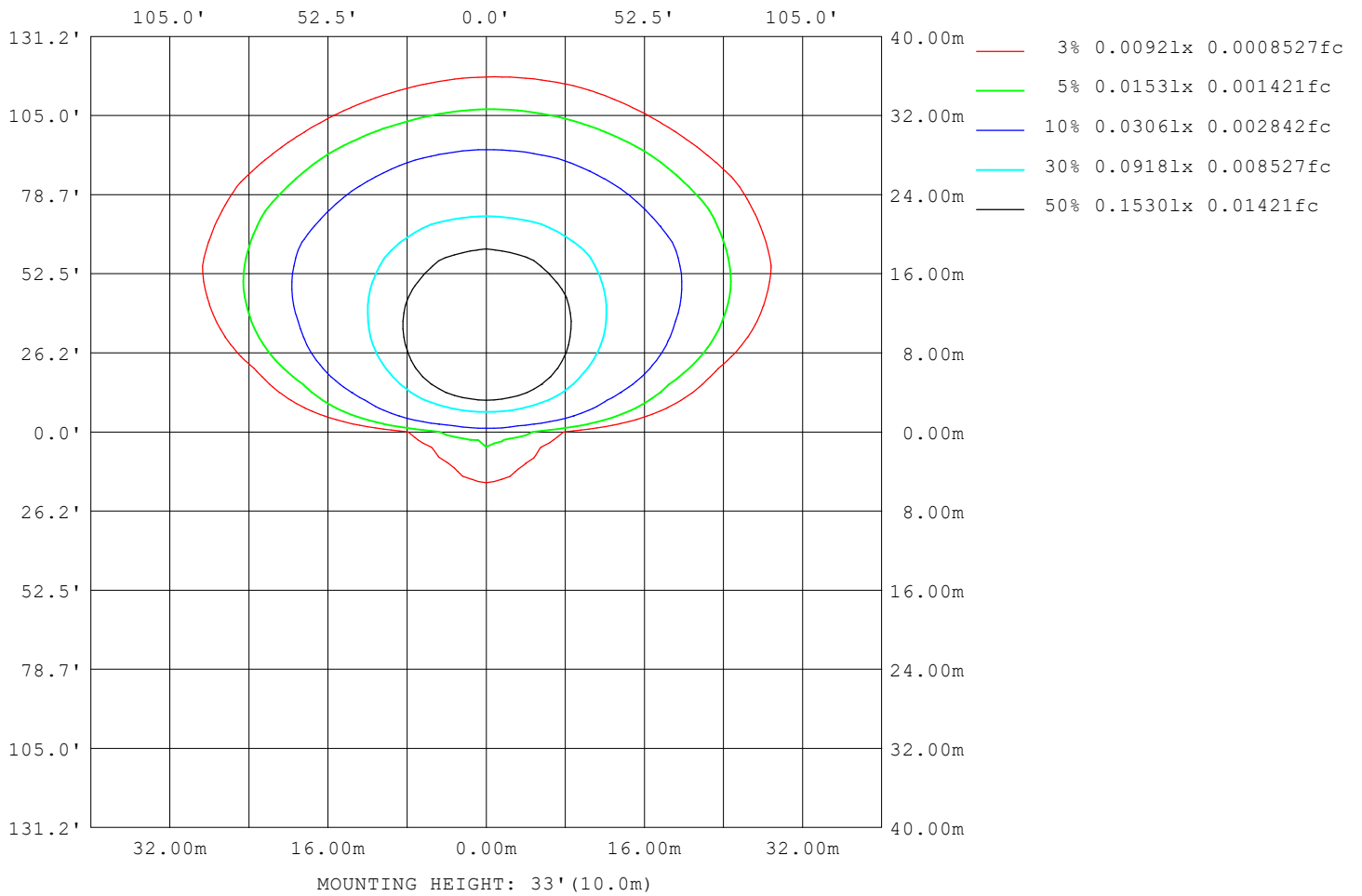
Note:The Curves indicate the illuminated area and the average illumination when the luminaire is at different distance.

C Range: 0 - 360DEG  
C Interval: 15.0DEG  
Test Speed: HIGH  
Temperature:25.3°C  
Operators:DAMIN  
Test Date:2024-05-09

γ Range: 0 - 90DEG  
γ Interval: 1.0DEG  
Test System:EVERFINE GO-2000B\_V1 SYSTEM V2.00.473  
Humidity:65.0%  
Test Distance:9.401m [K=1.0000]  
Remarks:

**ISOLUX DIAGRAM**

Test:U:220.31V I:0.0594A P:5.8464W PF:0.4465 Freq:50.00Hz Lamp Flux:116.461x1 lm		
NAME:	TYPE:	WEIGHT:
SPEC.:	DIM.:	SERIAL No.:
MFR.: EVERFINE	SUR.:	Shielding Angle:



C Range: 0 - 360DEG  
 C Interval: 15.0DEG  
 Test Speed: HIGH  
 Temperature:25.3°C  
 Operators:DAMIN  
 Test Date:2024-05-09

γ Range: 0 - 90DEG  
 γ Interval: 1.0DEG  
 Test System:EVERFINE GO-2000B\_V1 SYSTEM V2.00.473  
 Humidity:65.0%  
 Test Distance:9.401m [K=1.0000]  
 Remarks:

**LED Avg.L Report**

Test:U:220.31V I:0.0594A P:5.8464W PF:0.4465 Freq:50.00Hz Lamp Flux:116.461x1 lm		
NAME:	TYPE:	WEIGHT:
SPEC.:	DIM.:	SERIAL No.:
MFR.: EVERFINE	SUR.:	Shielding Angle:

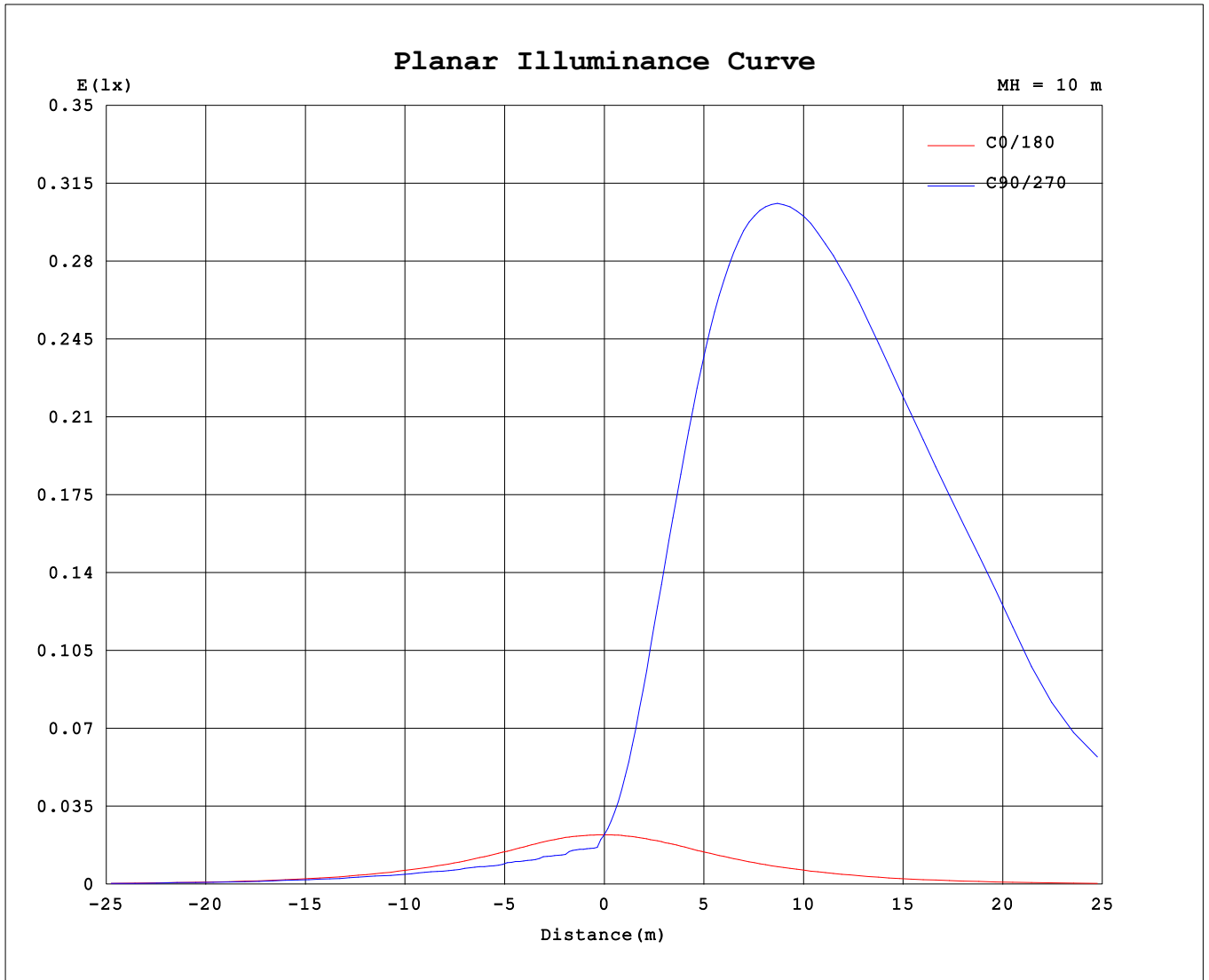
AvgL	cd/m2
L_0~180 (65) av	259
L_0~180 (75) av	171
L_0~180 (85) av	69
L_90~270 (65) av	15438
L_90~270 (75) av	8153
L_90~270 (85) av	148
L_45 (65) av	9111
L_45 (75) av	8233
L_45 (85) av	68

Standard: GB/T 29293-2012

C Range: 0 - 360DEG  
 C Interval: 15.0DEG  
 Test Speed: HIGH  
 Temperature:25.3°C  
 Operators:DAMIN  
 Test Date:2024-05-09

γ Range: 0 - 90DEG  
 γ Interval: 1.0DEG  
 Test System:EVERFINE GO-2000B\_V1 SYSTEM V2.00.473  
 Humidity:65.0%  
 Test Distance:9.401m [K=1.0000]  
 Remarks:

**Planar Illuminance Curve**



C Range: 0 - 360DEG  
 C Interval: 15.0DEG  
 Test Speed: HIGH  
 Temperature: 25.3°C  
 Operators: DAMIN  
 Test Date: 2024-05-09

γ Range: 0 - 90DEG  
 γ Interval: 1.0DEG  
 Test System: EVERFINE GO-2000B\_V1 SYSTEM V2.00.473  
 Humidity: 65.0%  
 Test Distance: 9.401m [K=1.0000]  
 Remarks:

LUMINOUS DISTRIBUTION INTENSITY DATA

Test:U:220.31V I:0.0594A P:5.8464W PF:0.4465 Freq:50.00Hz Lamp Flux:116.461x1 lm		
NAME:	TYPE:	WEIGHT:
SPEC.:	DIM.:	SERIAL No.:
MFR.: EVERFINE	SUR.:	Shielding Angle:

Table--1

UNIT: cd

C (DEG) \ γ (DEG)	0	15	30	45	60	75	90	105	120	135	150	165	180	195	210	225	240	255	270
0	2.24	2.24	2.24	2.24	2.24	2.24	2.24	2.24	2.24	2.24	2.24	2.24	2.24	2.24	2.24	2.24	2.24	2.24	2.24
5	2.24	1.83	1.66	1.61	1.63	1.59	1.62	1.57	1.61	1.57	1.63	1.94	2.24	2.61	3.04	3.57	3.91	4.33	4.30
10	2.24	1.62	1.61	1.58	1.58	1.52	1.54	1.51	1.58	1.55	1.58	1.58	2.21	3.09	4.27	5.83	6.94	8.17	8.23
15	2.21	1.57	1.58	1.39	1.41	1.41	1.41	1.41	1.39	1.40	1.55	1.54	2.18	3.66	6.00	9.08	11.3	13.6	13.8
20	2.15	1.53	1.43	1.39	1.39	1.34	1.32	1.33	1.38	1.36	1.44	1.50	2.14	4.40	8.30	13.2	17.0	20.5	21.0
25	2.08	1.48	1.35	1.27	1.30	1.33	1.33	1.33	1.29	1.24	1.33	1.45	2.06	5.31	11.1	18.4	24.0	29.1	29.9
30	2.00	1.41	1.32	1.26	1.23	1.30	1.26	1.30	1.24	1.23	1.31	1.41	2.01	6.47	14.4	24.3	32.3	39.4	40.7
35	1.93	1.25	1.18	1.16	1.22	1.28	1.30	1.27	1.19	1.16	1.15	1.31	1.95	7.85	18.3	31.1	41.8	51.4	53.3
40	1.86	1.17	1.18	1.16	1.18	1.32	1.30	1.30	1.16	1.12	1.15	1.17	1.88	9.35	22.2	38.7	52.7	65.2	67.8
45	1.78	1.14	1.03	1.09	1.22	1.27	1.27	1.25	1.18	1.06	1.06	1.14	1.81	11.0	26.4	46.5	65.1	81.3	84.8
50	1.68	1.05	1.03	1.08	1.15	1.32	1.32	1.28	1.12	1.04	1.00	1.07	1.72	12.6	30.7	55.0	78.7	99.3	104
55	1.52	0.95	0.93	0.99	1.15	1.21	1.22	1.16	1.10	0.91	0.91	0.94	1.56	14.1	35.1	63.5	92.6	118	123
60	1.31	0.89	0.91	0.91	1.06	1.09	1.09	1.06	1.00	0.86	0.87	0.90	1.37	15.5	39.1	71.3	104	134	140
65	1.07	0.77	0.79	0.82	0.86	0.97	1.02	0.93	0.79	0.74	0.73	0.74	1.12	16.2	41.7	75.9	107	130	129
70	0.78	0.62	0.65	0.62	0.66	0.71	0.79	0.68	0.63	0.56	0.57	0.61	0.81	16.0	41.1	69.5	80.1	91.6	92.7
75	0.44	0.44	0.48	0.45	0.52	0.50	0.56	0.47	0.48	0.39	0.41	0.42	0.45	13.8	33.7	41.4	39.7	41.0	41.6
80	0.21	0.23	0.32	0.30	0.38	0.37	0.43	0.33	0.33	0.25	0.27	0.18	0.19	8.28	13.7	8.97	4.51	2.22	1.64
85	0.09	0.04	0.15	0.13	0.24	0.20	0.26	0.21	0.20	0.11	0.09	0.03	0.04	0.87	0.00	0.00	0.00	0.00	0.00
90	0.00	0.00	0.07	0.10	0.19	0.20	0.23	0.22	0.17	0.11	0.05	0.00	0.00	0.00	0.00	0.00	0.00	0.00	0.00

C Range: 0 - 360DEG  
 C Interval: 15.0DEG  
 Test Speed: HIGH  
 Temperature:25.3°C  
 Operators:DAMIN  
 Test Date:2024-05-09

γ Range: 0 - 90DEG  
 γ Interval: 1.0DEG  
 Test System:EVERFINE GO-2000B\_V1 SYSTEM V2.00.473  
 Humidity:65.0%  
 Test Distance:9.401m [K=1.0000]  
 Remarks:

LUMINOUS DISTRIBUTION INTENSITY DATA

Test:U:220.31V I:0.0594A P:5.8464W PF:0.4465 Freq:50.00Hz Lamp Flux:116.461x1 lm		
NAME:	TYPE:	WEIGHT:
SPEC.:	DIM.:	SERIAL No.:
MFR.: EVERFINE	SUR.:	Shielding Angle:

Table--2

UNIT: cd

C (DEG)\ γ (DEG)	285	300	315	330	345														
0	2.24	2.24	2.24	2.24	2.24														
5	4.32	3.93	3.58	3.05	2.61														
10	8.16	6.97	5.83	4.31	3.09														
15	13.5	11.4	9.09	6.03	3.70														
20	20.4	17.1	13.3	8.34	4.42														
25	29.0	24.0	18.4	11.2	5.33														
30	39.3	32.4	24.3	14.5	6.48														
35	51.3	41.9	31.2	18.4	7.90														
40	65.1	52.9	38.8	22.5	9.40														
45	81.2	65.5	47.1	26.8	10.9														
50	99.2	79.5	55.9	31.1	12.5														
55	118	94.2	64.7	35.5	14.0														
60	134	106	72.7	39.5	15.3														
65	129	110	76.5	42.4	16.1														
70	93.7	82.2	70.4	41.9	15.8														
75	44.4	43.0	43.0	33.8	13.5														
80	1.98	4.10	9.10	14.4	7.65														
85	0.00	0.00	0.00	0.00	0.87														
90	0.00	0.00	0.00	0.00	0.00														

C Range: 0 - 360DEG	γ Range: 0 - 90DEG
C Interval: 15.0DEG	γ Interval: 1.0DEG
Test Speed: HIGH	Test System:EVERFINE GO-2000B_V1 SYSTEM V2.00.473
Temperature:25.3°C	Humidity:65.0%
Operators:DAMIN	Test Distance:9.401m [K=1.0000]
Test Date:2024-05-09	Remarks: