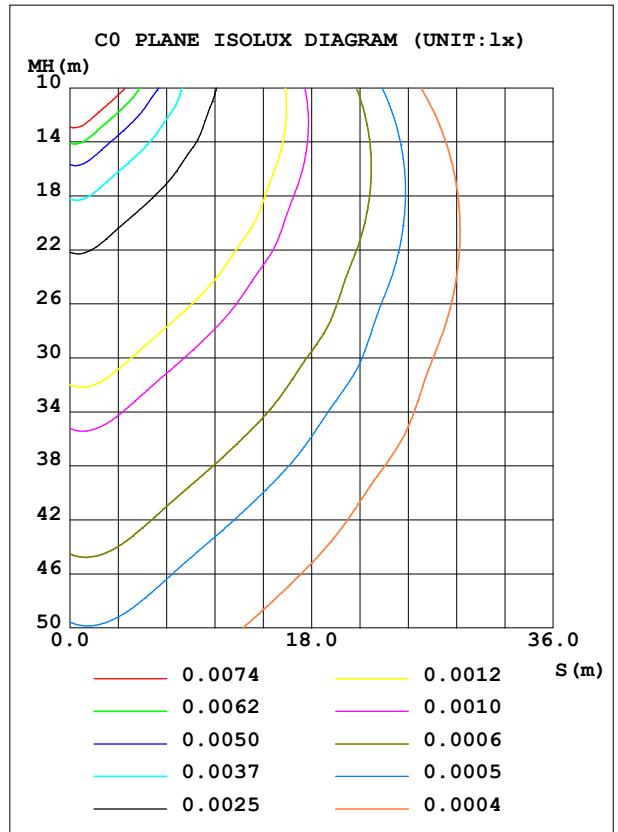
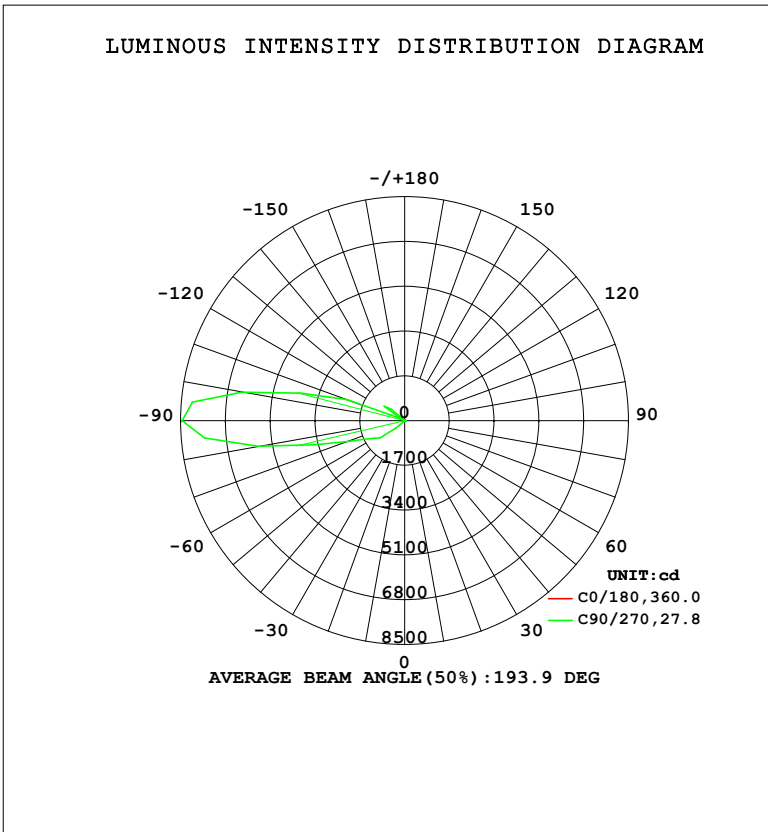


LUMINAIRE PHOTOMETRIC TEST REPORT

Test:U:220.35V I:0.1170A P:15.155W PF:0.5876 Freq:50.00Hz Lamp Flux:1421.44x1 lm		
NAME: 壁灯	TYPE: W系列	WEIGHT:
SPEC.:	DIM.:	SERIAL No.:
MFR.: EVERFINE	SUR.: 156.5mm	Shielding Angle:

DATA OF LAMP		PHOTOMETRIC DATA				Eff: 93.79 lm/W
MODEL	W08B	I <sub>max</sub> (cd)	8448	S/MH (C0/180)	1.13	
NOMINAL POWER (W)	15	LOR (%)	100.0	S/MH (C90/270)	0.03	
RATED VOLTAGE (V)	220	TOTAL FLUX (lm)	1421.4	η UP, DN (C0-180)	0.6, 0.6	
NOMINAL FLUX (lm)	1421.44	CIE CLASS	DIFFUSE	η UP, DN (C180-360)	47.4, 51.5	
LAMPS INSIDE	1	η up (%)	48.0	CIBSE SHR NOM	0.00	
TEST VOLTAGE (V)	219.5	η down (%)	52.0	CIBSE SHR MAX	0.05	



C Range: 0 - 360DEG  
 C Interval: 22.5DEG  
 Test Speed: HIGH  
 Temperature: 25.3°C  
 Operators: DAMIN  
 Test Date: 2023-11-16

γ Range: 0 - 180DEG  
 γ Interval: 5.0DEG  
 Test System: EVERFINE GO-2000B\_V1 SYSTEM V2.00.473  
 Humidity: 65.0%  
 Test Distance: 9.401m [K=1.0000]  
 Remarks:

ZONAL FLUX DIAGRAM

ZONAL FLUX DIAGRAM:

$\gamma$	C0	C45	C90	C135	C180	C225	C270	C315	$\gamma$	$\Phi$ zone	$\Phi$ total	%lum,lamp
10	0.3762	0.4236	0.4910	0.4598	0.3781	1.073	2.690	1.322	0- 10	0.0506	0.0506	0.00,0.00
20	0.3304	0.5273	1.118	0.5808	0.3262	1.999	4.904	3.003	10- 20	0.2321	0.2827	0.02,0.02
30	0.3013	0.6233	1.487	0.8229	0.3193	3.303	16.02	4.700	20- 30	0.6439	0.9266	0.07,0.07
40	0.2826	0.9984	4.034	1.089	0.3124	7.154	49.34	9.040	30- 40	2.066	2.992	0.21,0.21
50	0.2803	1.757	9.912	1.694	0.3055	16.97	422.8	19.44	40- 50	7.177	10.17	0.72,0.72
60	0.2800	2.764	16.44	2.602	0.3325	27.63	1360	35.53	50- 60	46.95	57.12	4.02,4.02
70	0.2796	3.652	20.60	3.727	0.3574	33.80	2310	44.48	60- 70	119.3	176.5	12.4,12.4
80	0.2793	4.236	22.30	4.744	0.3588	44.00	5641	50.55	70- 80	210.8	387.2	27.2,27.2
90	0.2790	4.213	22.65	5.037	0.3602	52.11	8448	54.12	80- 90	352.2	739.5	52,52
100	0.2753	4.212	19.63	5.868	0.3615	46.15	6278	49.81	90-100	368.3	1108	77.9,77.9
110	0.2682	3.901	21.24	6.029	0.3387	19.81	2348	26.88	100-110	213.7	1321	93,93
120	0.2612	2.758	15.43	5.485	0.3241	9.748	113.1	15.20	110-120	54.35	1376	96.8,96.8
130	0.2431	1.864	8.460	3.526	0.3096	14.80	709.9	17.47	120-130	34.97	1411	99.2,99.2
140	0.2286	1.072	5.090	1.878	0.2763	8.832	39.31	9.905	130-140	8.107	1419	99.8,99.8
150	0.2269	0.6477	2.785	0.8360	0.2410	2.109	20.75	2.179	140-150	2.041	1421	100,100
160	0.2252	0.3761	1.052	0.4845	0.2078	0.4625	4.270	0.1936	150-160	0.4513	1421	100,100
170	0.2244	0.1359	0.1096	0.2301	0.2036	0.2960	0.2751	0.3030	160-170	0.0937	1421	100,100
180	0.2244	0.1359	0	0.1332	0.2099	0.1918	0	0.0484	170-180	0.0221	1421	100,100
DEG	LUMINOUS INTENSITY:cd									UNIT:lm		

Conical surface Flux(90deg): 5.1287 lm

%lum = 0.4%  
%lamp = 0.4%

Conical surface Flux(130deg): 108.79 lm

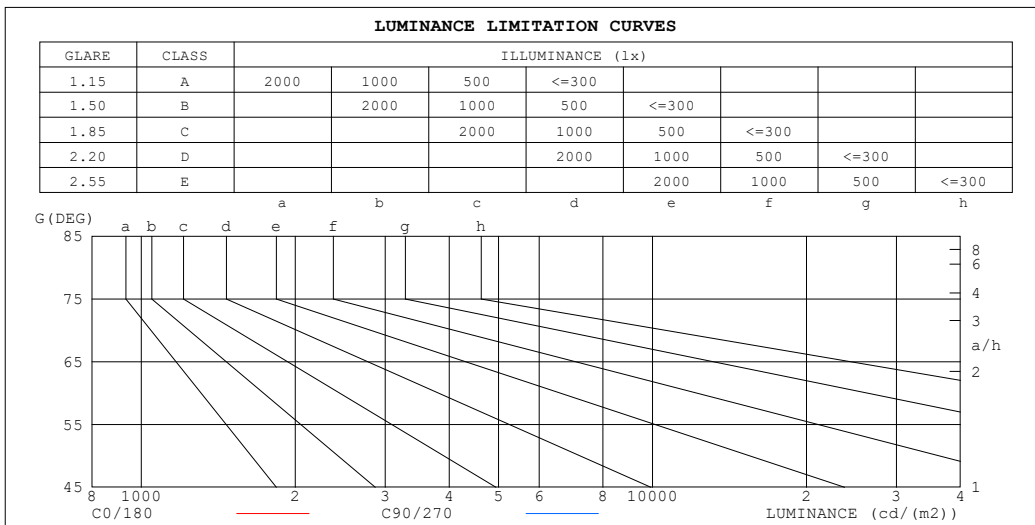
%lum = 7.7%  
%lamp = 7.7%

C Range: 0 - 360DEG  
C Interval: 22.5DEG  
Test Speed: HIGH  
Temperature:25.3°C  
Operators:DAMIN  
Test Date:2023-11-16

$\gamma$  Range: 0 - 180DEG  
 $\gamma$  Interval: 5.0DEG  
Test System:EVERFINE GO-2000B\_V1 SYSTEM V2.00.473  
Humidity:65.0%  
Test Distance:9.401m [K=1.0000]  
Remarks:

**LUMINANCE LIMITATION CURVES**

Test:U:220.35V I:0.1170A P:15.155W PF:0.5876 Freq:50.00Hz Lamp Flux:1421.44x1 lm		
NAME: 壁灯	TYPE: W系列	WEIGHT:
SPEC.:	DIM.:	SERIAL No.:
MFR.: EVERFINE	SUR.: 156.5mm	Shielding Angle:



LUMINANCE cd/(m2)		
G (DEG)	C0/180	C90/270
85	38	468
80	19	231
75	13	150
70	10	108
65	8	81
60	7	59
55	6	42
50	5	28
45	5	17

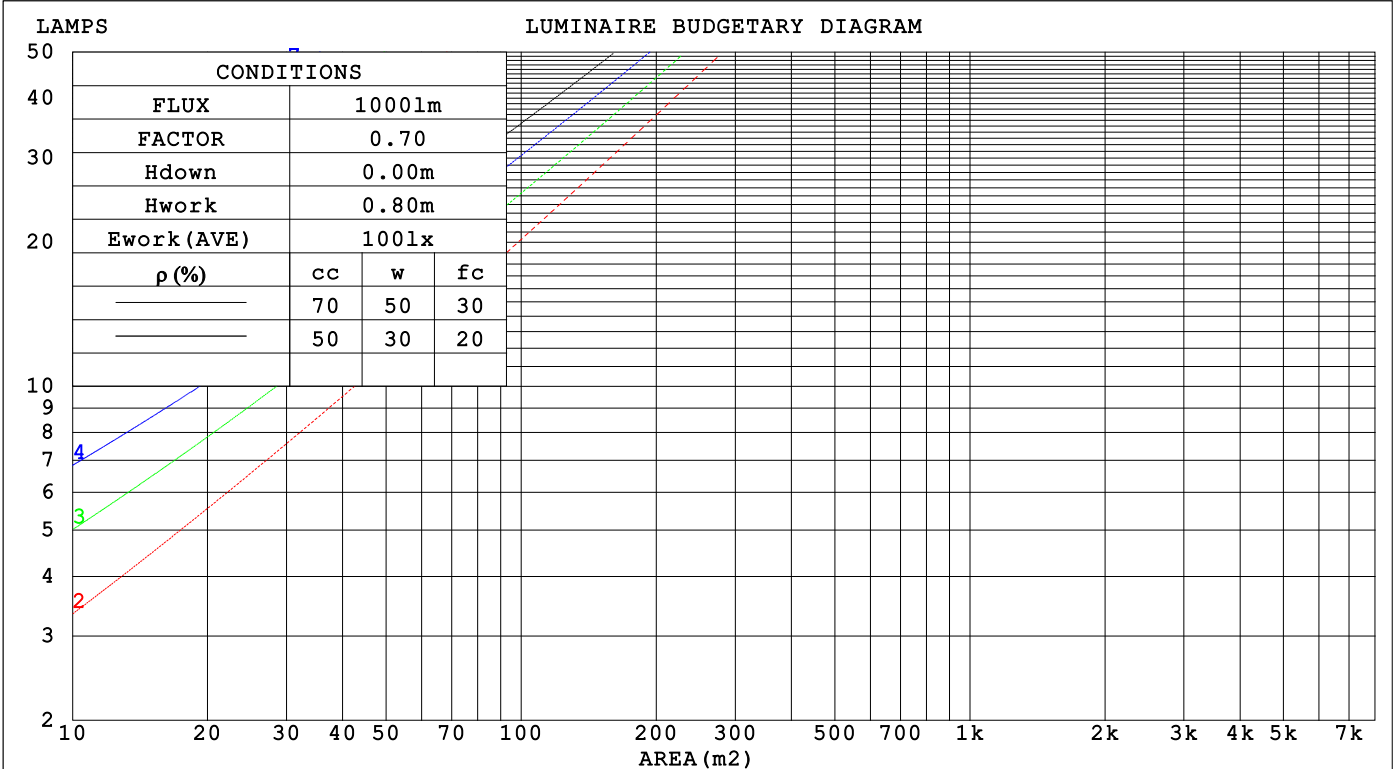
C Range: 0 - 360DEG  
 C Interval: 22.5DEG  
 Test Speed: HIGH  
 Temperature: 25.3°C  
 Operators: DAMIN  
 Test Date: 2023-11-16

γ Range: 0 - 180DEG  
 γ Interval: 5.0DEG  
 Test System: EVERFINE GO-2000B\_V1 SYSTEM V2.00.473  
 Humidity: 65.0%  
 Test Distance: 9.401m [K=1.0000]  
 Remarks:

CU AND LUMINAIRE BUDGETARY ESTIMATE DIAGRAM

Test:U:220.35V I:0.1170A P:15.155W PF:0.5876 Freq:50.00Hz Lamp Flux:1421.44x1 lm		
NAME: 壁灯	TYPE: W系列	WEIGHT:
SPEC.:	DIM.:	SERIAL No.:
MFR.: EVERFINE	SUR.: 156.5mm	Shielding Angle:

$\rho_{cc}$	80%			70%			50%			30%			10%			0
$\rho_w$	50%	30%	10%	50%	30%	10%	50%	30%	10%	50%	30%	10%	50%	30%	10%	0
$\rho_{fc}$	20%			20%			20%			20%			20%			0
RCR	RCR:Room Cavity Ratio			Coefficients of Utilization(CU)												
0.0	1.08	1.08	1.08	.00	.00	.00	.84	.84	.84	.71	.71	.71	.58	.58	.58	.52
1.0	.78	.69	.62	.70	.63	.56	.57	.51	.46	.45	.40	.36	.33	.30	.26	.20
2.0	.63	.53	.44	.57	.48	.40	.45	.38	.31	.34	.29	.23	.25	.20	.16	.10
3.0	.53	.42	.33	.48	.38	.30	.38	.30	.23	.28	.22	.17	.20	.15	.11	.06
4.0	.46	.35	.27	.41	.31	.24	.32	.24	.18	.24	.18	.13	.17	.12	.08	.03
5.0	.40	.30	.22	.36	.27	.19	.29	.21	.15	.21	.15	.10	.15	.10	.06	.02
6.0	.36	.26	.18	.32	.23	.16	.25	.18	.12	.19	.13	.08	.13	.08	.05	.01
7.0	.32	.22	.16	.29	.20	.14	.23	.16	.10	.17	.11	.07	.12	.07	.04	.01
8.0	.29	.20	.13	.26	.18	.12	.21	.14	.09	.16	.10	.06	.11	.07	.03	.01
9.0	.26	.18	.12	.24	.16	.10	.19	.12	.08	.15	.09	.05	.10	.06	.03	.00
10.0	.24	.16	.10	.22	.14	.09	.18	.11	.07	.13	.08	.05	.10	.05	.02	.00



C Range: 0 - 360DEG  
 C Interval: 22.5DEG  
 Test Speed: HIGH  
 Temperature:25.3°C  
 Operators:DAMIN  
 Test Date:2023-11-16

$\gamma$  Range: 0 - 180DEG  
 $\gamma$  Interval: 5.0DEG  
 Test System:EVERFINE GO-2000B\_V1 SYSTEM V2.00.473  
 Humidity:65.0%  
 Test Distance:9.401m [K=1.0000]  
 Remarks:

WEC AND CCEC

Test:U:220.35V I:0.1170A P:15.155W PF:0.5876 Freq:50.00Hz								
Lamp Flux:1421.44x1 lm								
NAME: 壁灯			TYPE: W系列			WEIGHT:		
SPEC.:			DIM.:			SERIAL No.:		
MFR.: EVERFINE			SUR.: 156.5mm			Shielding Angle:		

ρ <sub>CC</sub>	80%			70%			50%			30%			10%			0
ρ <sub>W</sub>	50%	30%	10%	50%	30%	10%	50%	30%	10%	50%	30%	10%	50%	30%	10%	0
ρ <sub>FC</sub>	20%			20%			20%			20%			20%			0
RCR	RCR:Room Cavity Ratio						Wall Exitance Coefficients(WEC)									
0.0																
1.0	.593	.337	.107	.570	.325	.103	.528	.303	.097	.490	.283	.091	.455	.263	.085	
2.0	.443	.243	.074	.423	.233	.072	.384	.214	.066	.349	.196	.061	.316	.179	.056	
3.0	.363	.193	.058	.344	.184	.055	.309	.168	.051	.277	.152	.047	.247	.137	.042	
4.0	.310	.161	.047	.293	.153	.045	.261	.138	.041	.231	.124	.037	.204	.111	.034	
5.0	.272	.138	.040	.256	.131	.038	.227	.118	.035	.200	.105	.031	.174	.093	.028	
6.0	.242	.122	.035	.228	.115	.033	.201	.103	.030	.176	.091	.027	.152	.080	.024	
7.0	.219	.108	.031	.206	.103	.029	.181	.092	.026	.158	.081	.024	.136	.071	.021	
8.0	.200	.098	.027	.188	.093	.026	.165	.082	.024	.143	.073	.021	.123	.063	.018	
9.0	.184	.089	.025	.173	.084	.024	.151	.075	.021	.131	.066	.019	.112	.057	.016	
10.0	.171	.082	.023	.160	.077	.022	.140	.069	.019	.121	.060	.017	.103	.052	.015	

ρ <sub>CC</sub>	80%			70%			50%			30%			10%			0
ρ <sub>W</sub>	50%	30%	10%	50%	30%	10%	50%	30%	10%	50%	30%	10%	50%	30%	10%	0
ρ <sub>FC</sub>	20%			20%			20%			20%			20%			0
RCR	RCR:Room Cavity Ratio						Ceiling Cavity Exitance Coefficients(CCEC)									
0.0	.556	.556	.556	.475	.475	.475	.324	.324	.324	.186	.186	.186	.060	.060	.060	
1.0	.568	.522	.481	.486	.448	.414	.333	.308	.286	.191	.178	.166	.061	.057	.054	
2.0	.563	.502	.451	.483	.432	.390	.331	.299	.272	.191	.174	.159	.061	.056	.052	
3.0	.555	.488	.434	.476	.421	.376	.327	.292	.264	.189	.171	.156	.061	.055	.051	
4.0	.547	.477	.424	.469	.412	.368	.322	.287	.259	.187	.168	.153	.060	.055	.050	
5.0	.538	.468	.417	.462	.405	.363	.318	.283	.256	.184	.166	.152	.059	.054	.050	
6.0	.529	.461	.412	.455	.399	.359	.314	.279	.254	.182	.164	.151	.059	.054	.050	
7.0	.521	.455	.408	.448	.394	.356	.310	.276	.252	.180	.163	.150	.058	.053	.050	
8.0	.514	.450	.406	.442	.390	.354	.306	.274	.251	.178	.162	.150	.058	.053	.049	
9.0	.507	.445	.403	.437	.386	.352	.302	.272	.250	.176	.160	.149	.057	.053	.049	
10.0	.500	.441	.402	.431	.383	.350	.299	.270	.249	.175	.159	.149	.057	.052	.049	

C Range: 0 - 360DEG  
 C Interval: 22.5DEG  
 Test Speed: HIGH  
 Temperature:25.3°C  
 Operators:DAMIN  
 Test Date:2023-11-16

γ Range: 0 - 180DEG  
 γ Interval: 5.0DEG  
 Test System:EVERFINE GO-2000B\_V1 SYSTEM V2.00.473  
 Humidity:65.0%  
 Test Distance:9.401m [K=1.0000]  
 Remarks:

UGR(Unified Glare Rating) Table

Test:U:220.35V I:0.1170A P:15.155W PF:0.5876 Freq:50.00Hz										
Lamp Flux:1421.44x1 lm										
NAME: 壁灯			TYPE: W系列				WEIGHT:			
SPEC.:			DIM.:				SERIAL No.:			
MFR.: EVERFINE			SUR.: 156.5mm				Shielding Angle:			
ceiling/cavity	0.7	0.7	0.5	0.5	0.3	0.7	0.7	0.5	0.5	0.3
walls	0.5	0.3	0.5	0.3	0.3	0.5	0.3	0.5	0.3	0.3
working plane	0.2	0.2	0.2	0.2	0.2	0.2	0.2	0.2	0.2	0.2
Room dimensions	Viewed crosswise					Viewed endwise				
x = 2H y = 2H	-27.2	-25.9	-26.3	-25.0	-23.8	-12.9	-11.7	-12.1	-10.8	-9.6
3H	-24.4	-23.2	-23.5	-22.3	-21.1	-8.0	-6.8	-7.1	-5.9	-4.7
4H	-22.5	-21.4	-21.6	-20.5	-19.3	-5.6	-4.5	-4.7	-3.6	-2.3
6H	-20.4	-19.3	-19.5	-18.4	-17.1	-3.1	-2.1	-2.2	-1.1	0.1
8H	-19.2	-18.2	-18.3	-17.2	-15.9	-1.8	-0.8	-0.9	0.2	1.5
12H	-17.8	-16.8	-16.9	-15.8	-14.6	-0.3	0.7	0.6	1.7	2.9
4H 2H	-20.1	-19.0	-19.2	-18.1	-16.9	-12.9	-11.8	-12.0	-10.9	-9.6
3H	-18.9	-17.9	-18.0	-16.9	-15.6	-7.5	-6.6	-6.6	-5.6	-4.3
4H	-18.2	-17.3	-17.3	-16.3	-15.0	-4.8	-3.9	-3.9	-2.9	-1.6
6H	-17.3	-16.4	-16.3	-15.4	-14.1	-2.0	-1.2	-1.1	-0.2	1.1
8H	-16.5	-15.7	-15.6	-14.7	-13.4	-0.5	0.3	0.4	1.3	2.6
12H	-15.5	-14.7	-14.5	-13.7	-12.4	1.1	1.9	2.1	2.9	4.2
8H 4H	-13.2	-12.4	-12.2	-11.4	-10.0	-4.8	-4.0	-3.9	-3.0	-1.7
6H	-12.4	-11.7	-11.5	-10.7	-9.4	-1.6	-0.9	-0.6	0.1	1.5
8H	-12.1	-11.5	-11.1	-10.4	-9.1	0.2	0.9	1.2	1.9	3.3
12H	-11.7	-11.1	-10.7	-10.0	-8.7	2.2	2.8	3.2	3.8	5.2
12H 4H	-11.1	-10.3	-10.1	-9.3	-8.0	-4.9	-4.1	-3.9	-3.1	-1.8
6H	-10.1	-9.4	-9.1	-8.4	-7.0	-1.6	-0.9	-0.6	0.1	1.4
8H	-9.6	-9.0	-8.6	-8.0	-6.7	0.3	0.9	1.3	1.9	3.3
Variations with the observer position at spacings(CIE Pub.117):										
S = 1.0H	+ 0.1 / - 0.1					+ 0.1 / - 0.1				
1.5H	+ 0.2 / - 0.1					+ 0.2 / - 0.3				
2.0H	+ 0.4 / - 0.4					+ 0.4 / - 0.4				

CIE Pub.117, 1421 lm Total Lamp Luminous Flux Correct (8log(F/F0) = 1.2)  
 Area: 0.245 m2

C Range: 0 - 360DEG  
 C Interval: 22.5DEG  
 Test Speed: HIGH  
 Temperature:25.3°C  
 Operators:DAMIN  
 Test Date:2023-11-16

γ Range: 0 - 180DEG  
 γ Interval: 5.0DEG  
 Test System:EVERFINE GO-2000B\_V1 SYSTEM V2.00.473  
 Humidity:65.0%  
 Test Distance:9.401m [K=1.0000]  
 Remarks:

**UTILIZATION FACTORS TABLE**

Test:U:220.35V I:0.1170A P:15.155W PF:0.5876 Freq:50.00Hz Lamp Flux:1421.44x1 lm		
NAME: 壁灯	TYPE: W系列	WEIGHT:
SPEC.:	DIM.:	SERIAL No.:
MFR.: EVERFINE	SUR.: 156.5mm	Shielding Angle:

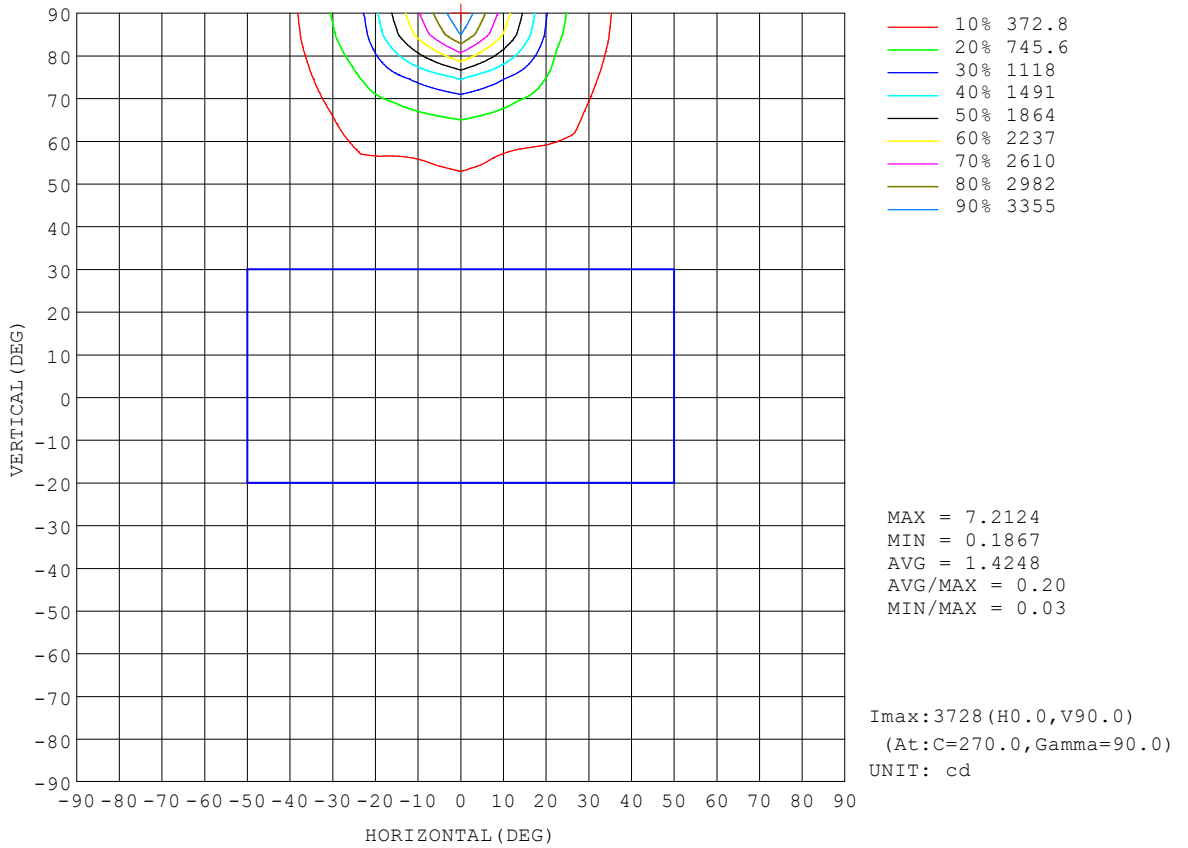
REFLECTANCE										
Ceiling	0.8	0.8	0.8	0.7	0.7	0.7	0.5	0.5	0.5	0
Walls	0.7	0.5	0.3	0.7	0.5	0.3	0.7	0.5	0.3	0
Working plane	0.2	0.2	0.2	0.2	0.2	0.2	0.2	0.2	0.2	0
ROOM INDEX	UTILIZATION FACTORS (PERCENT) $k(RI) \times RCR = 5$									
k = 0.60	30	16	8	29	15	8	26	14	7	1
0.80	37	21	11	35	20	11	31	18	10	1
1.00	42	25	14	40	24	14	35	24	12	2
1.25	48	31	19	45	29	18	39	25	15	3
1.50	53	35	23	49	33	21	42	29	19	4
2.00	61	43	30	56	40	28	48	35	24	7
2.50	66	49	36	61	46	34	52	39	29	10
3.00	70	55	42	65	51	39	55	43	33	13
4.00	77	62	51	71	58	47	59	49	40	17
5.00	81	68	57	74	63	53	62	53	45	21
ROOM INDEX	UF(total)									Direct
According to DIN EN 13032-2 2004			Suspended				SHRNOM = 1.25			

C Range: 0 - 360DEG  
 C Interval: 22.5DEG  
 Test Speed: HIGH  
 Temperature: 25.3°C  
 Operators: DAMIN  
 Test Date: 2023-11-16

γ Range: 0 - 180DEG  
 γ Interval: 5.0DEG  
 Test System: EVERFINE GO-2000B\_V1 SYSTEM V2.00.473  
 Humidity: 65.0%  
 Test Distance: 9.401m [K=1.0000]  
 Remarks:

**ISOCANDELA DIAGRAM**

Test:U:220.35V I:0.1170A P:15.155W PF:0.5876 Freq:50.00Hz Lamp Flux:1421.44x1 lm		
NAME: 壁灯	TYPE: W系列	WEIGHT:
SPEC.:	DIM.:	SERIAL No.:
MFR.: EVERFINE	SUR.: 156.5mm	Shielding Angle:



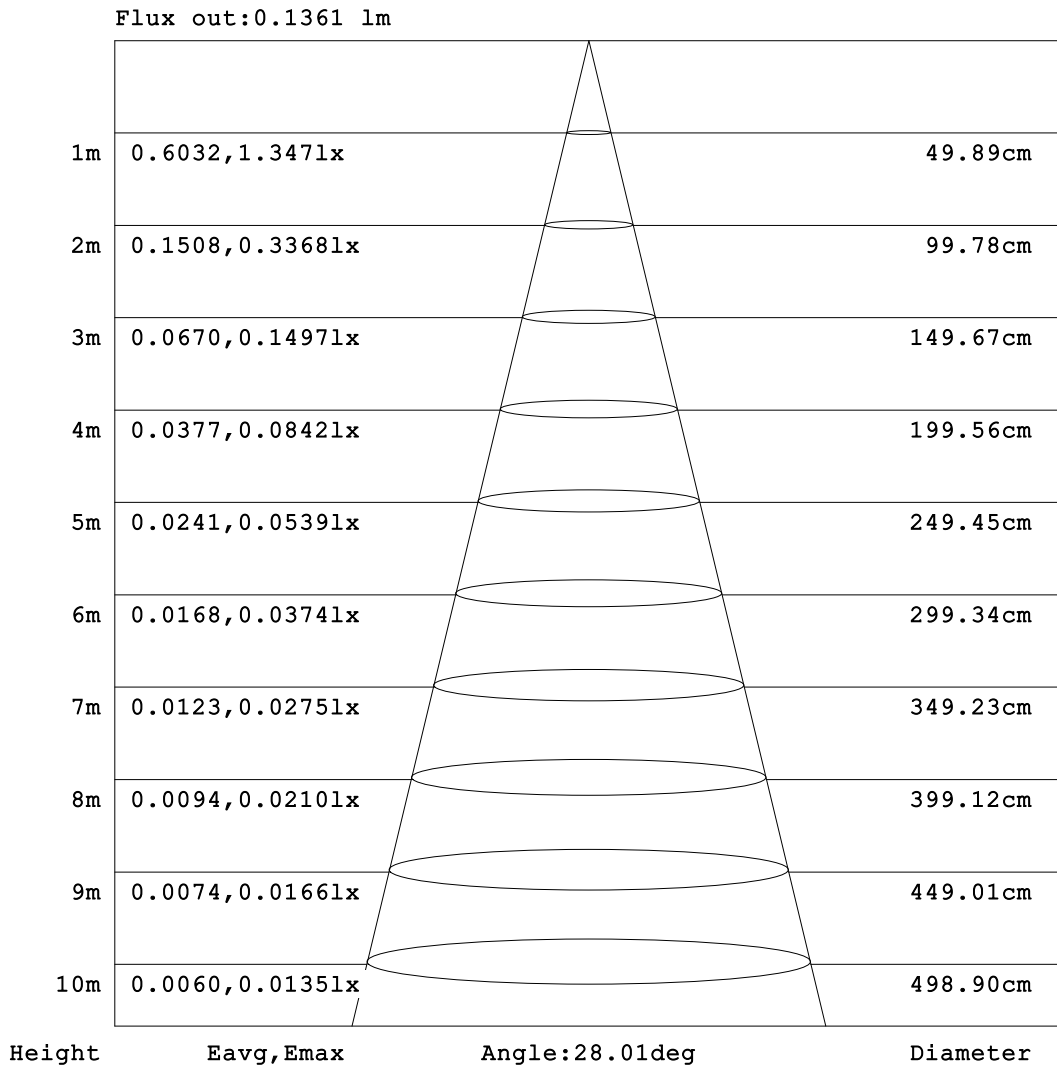
C Range: 0 - 360DEG  
 C Interval: 22.5DEG  
 Test Speed: HIGH  
 Temperature:25.3°C  
 Operators:DAMIN  
 Test Date:2023-11-16

γ Range: 0 - 180DEG  
 γ Interval: 5.0DEG  
 Test System:EVERFINE GO-2000B\_V1 SYSTEM V2.00.473  
 Humidity:65.0%  
 Test Distance:9.401m [K=1.0000]  
 Remarks:



**AAI Figure**

Test:U:220.35V I:0.1170A P:15.155W PF:0.5876 Freq:50.00Hz Lamp Flux:1421.44x1 lm		
NAME: 壁灯	TYPE: W系列	WEIGHT:
SPEC.:	DIM.:	SERIAL No.:
MFR.: EVERFINE	SUR.: 156.5mm	Shielding Angle:



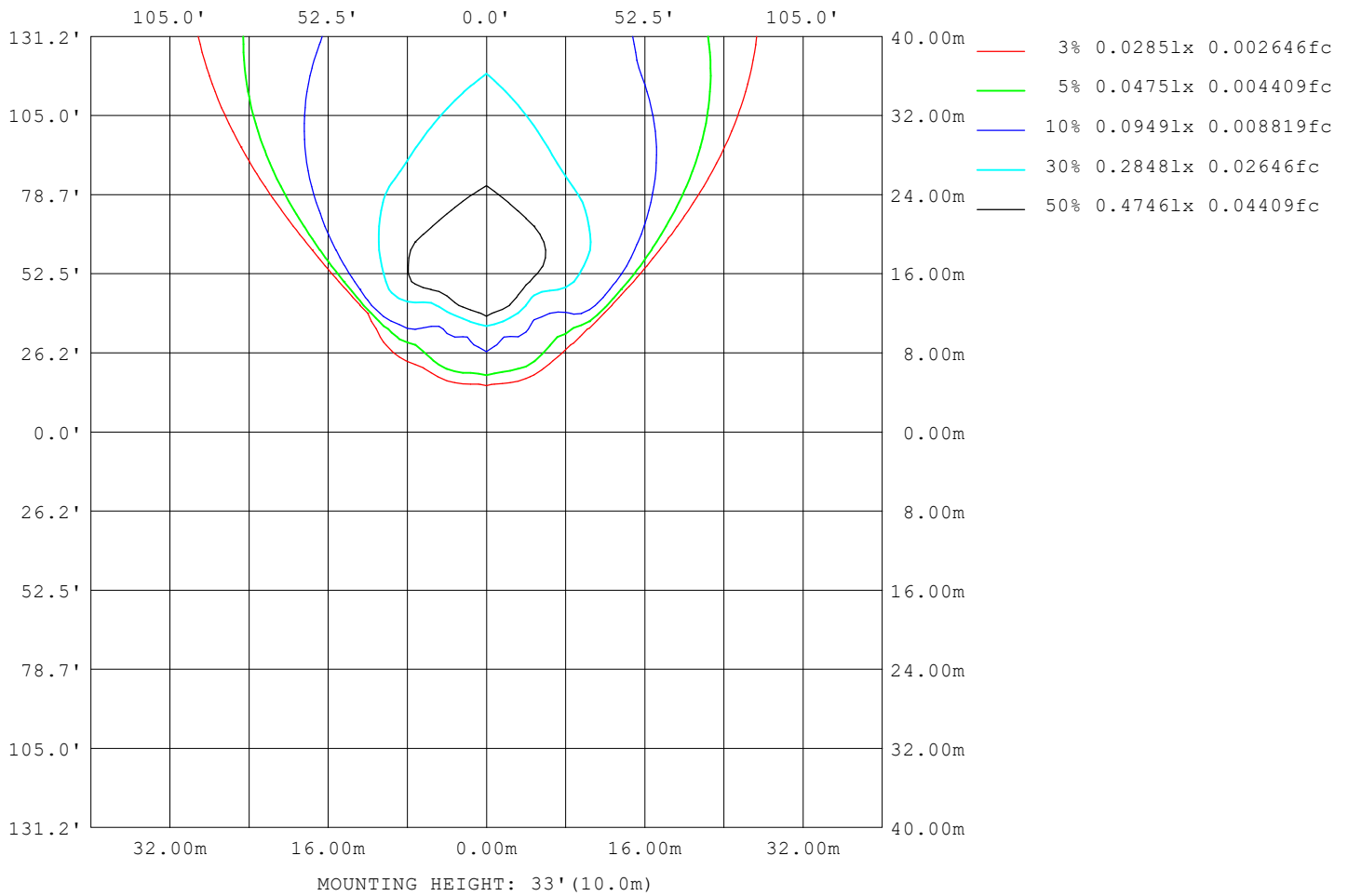
Note:The Curves indicate the illuminated area and the average illumination when the luminaire is at different distance.

C Range: 0 - 360DEG  
C Interval: 22.5DEG  
Test Speed: HIGH  
Temperature:25.3°C  
Operators:DAMIN  
Test Date:2023-11-16

γ Range: 0 - 180DEG  
γ Interval: 5.0DEG  
Test System:EVERFINE GO-2000B\_V1 SYSTEM V2.00.473  
Humidity:65.0%  
Test Distance:9.401m [K=1.0000]  
Remarks:

**ISOLUX DIAGRAM**

Test:U:220.35V I:0.1170A P:15.155W PF:0.5876 Freq:50.00Hz Lamp Flux:1421.44x1 lm		
NAME: 壁灯	TYPE: W系列	WEIGHT:
SPEC.:	DIM.:	SERIAL No.:
MFR.: EVERFINE	SUR.: 156.5mm	Shielding Angle:



C Range: 0 - 360DEG  
 C Interval: 22.5DEG  
 Test Speed: HIGH  
 Temperature: 25.3°C  
 Operators: DAMIN  
 Test Date: 2023-11-16

γ Range: 0 - 180DEG  
 γ Interval: 5.0DEG  
 Test System: EVERFINE GO-2000B\_V1 SYSTEM V2.00.473  
 Humidity: 65.0%  
 Test Distance: 9.401m [K=1.0000]  
 Remarks:

**LED Avg.L Report**

Test:U:220.35V I:0.1170A P:15.155W PF:0.5876 Freq:50.00Hz Lamp Flux:1421.44x1 lm		
NAME: 壁灯	TYPE: W系列	WEIGHT:
SPEC.:	DIM.:	SERIAL No.:
MFR.: EVERFINE	SUR.: 156.5mm	Shielding Angle:

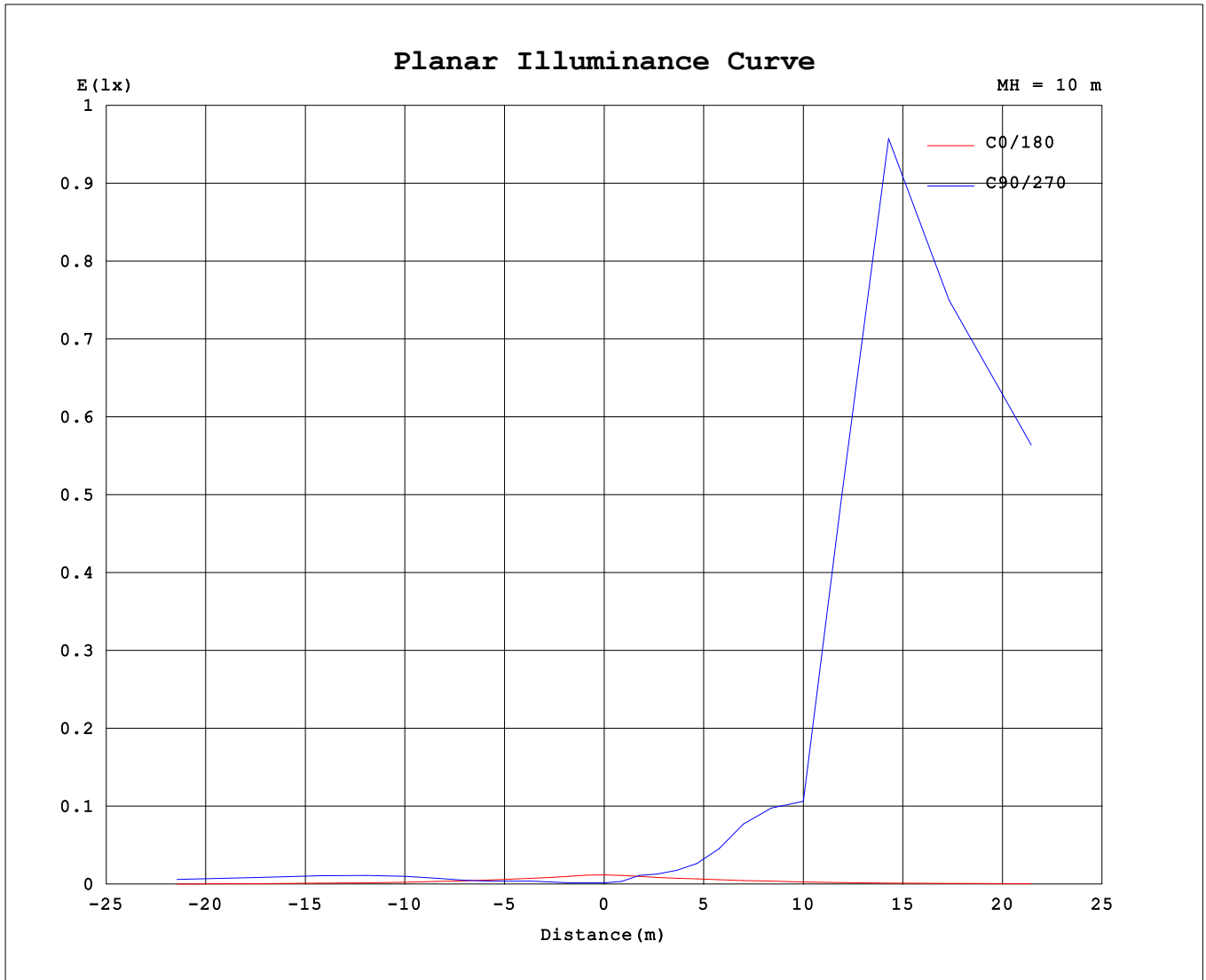
AvgL	cd/m2
L_0~180 (65) av	3
L_0~180 (75) av	5
L_0~180 (85) av	15
L_90~270 (65) av	8269
L_90~270 (75) av	27994
L_90~270 (85) av	179161
L_45 (65) av	188
L_45 (75) av	371
L_45 (85) av	1290

Standard: GB/T 29293-2012

C Range: 0 - 360DEG  
 C Interval: 22.5DEG  
 Test Speed: HIGH  
 Temperature:25.3℃  
 Operators:DAMIN  
 Test Date:2023-11-16

γ Range: 0 - 180DEG  
 γ Interval: 5.0DEG  
 Test System:EVERFINE GO-2000B\_V1 SYSTEM V2.00.473  
 Humidity:65.0%  
 Test Distance:9.401m [K=1.0000]  
 Remarks:

**Planar Illuminance Curve**



C Range: 0 - 360DEG  
 C Interval: 22.5DEG  
 Test Speed: HIGH  
 Temperature: 25.3°C  
 Operators: DAMIN  
 Test Date: 2023-11-16

γ Range: 0 - 180DEG  
 γ Interval: 5.0DEG  
 Test System: EVERFINE GO-2000B\_V1 SYSTEM V2.00.473  
 Humidity: 65.0%  
 Test Distance: 9.401m [K=1.0000]  
 Remarks:

LUMINOUS DISTRIBUTION INTENSITY DATA

Test:U:220.35V I:0.1170A P:15.155W PF:0.5876 Freq:50.00Hz Lamp Flux:1421.44x1 lm		
NAME: 壁灯	TYPE: W系列	WEIGHT:
SPEC.:	DIM.:	SERIAL No.:
MFR.: EVERFINE	SUR.: 156.5mm	Shielding Angle:

Table--1

UNIT: cd

C (DEG) \ γ (DEG)	0	22.5	45	67.5	90	112.5	135	157.5	180	202.5	225	247.5	270	292.5	315	337.5			
0	0.42	0.42	0.42	0.42	0.42	0.42	0.42	0.42	0.42	0.42	0.42	0.42	0.42	0.42	0.42	0.42			
5	0.42	0.39	0.42	0.48	0.42	0.50	0.42	0.46	0.41	0.45	0.62	0.67	0.92	0.68	0.69	0.40			
10	0.38	0.31	0.42	0.57	0.49	0.55	0.46	0.47	0.38	0.51	1.07	2.03	2.69	2.17	1.32	0.52			
15	0.35	0.24	0.43	0.85	0.80	0.66	0.50	0.49	0.35	0.59	1.76	2.61	3.39	2.88	2.56	0.66			
20	0.33	0.24	0.53	1.09	1.12	0.97	0.58	0.49	0.33	0.76	2.00	3.60	4.90	3.86	3.00	1.03			
25	0.32	0.24	0.55	1.24	1.31	1.12	0.71	0.50	0.32	0.90	2.51	5.62	8.16	5.83	3.66	1.57			
30	0.30	0.24	0.62	1.41	1.49	1.27	0.82	0.50	0.32	0.97	3.30	10.26	16.02	10.16	4.70	2.01			
35	0.30	0.23	0.73	1.99	2.22	1.56	0.92	0.50	0.32	1.04	4.70	19.9	32.0	19.14	6.35	2.21			
40	0.28	0.23	1.00	3.23	4.03	2.28	1.09	0.51	0.31	1.14	7.15	34.5	49.3	34.0	9.04	2.30			
45	0.28	0.23	1.33	5.09	6.71	3.47	1.34	0.51	0.31	1.25	11.18	46.2	68.5	47.8	13.28	2.39			
50	0.28	0.24	1.76	7.41	9.91	5.06	1.69	0.52	0.31	1.37	17.0	64.4	123	63.7	19.44	2.55			
55	0.28	0.26	2.26	9.88	13.27	7.06	2.12	0.55	0.32	1.51	23.0	286	1150	137	27.4	2.75			
60	0.28	0.28	2.76	12.21	16.44	9.31	2.60	0.57	0.33	1.66	27.6	918	1360	691	35.5	3.01			
65	0.28	0.31	3.24	14.16	18.96	11.49	3.16	0.62	0.35	1.83	30.3	1112	1693	1112	41.2	3.28			
70	0.28	0.33	3.65	15.63	20.60	13.46	3.73	0.69	0.36	2.00	33.8	1282	2310	1215	44.5	3.49			
75	0.28	0.34	4.00	16.43	21.57	14.97	4.30	0.73	0.36	2.16	38.2	1526	3529	1347	47.5	3.71			
80	0.28	0.34	4.24	17.02	22.30	16.20	4.74	0.76	0.36	2.29	44.0	1780	5641	1495	50.5	3.92			
85	0.28	0.35	4.40	17.29	22.62	17.02	5.10	0.80	0.36	2.40	47.8	2060	7629	1638	52.9	4.05			
90	0.28	0.35	4.21	16.39	22.65	16.30	5.04	0.84	0.36	2.45	52.1	2219	8448	1715	54.1	4.10			
95	0.28	0.35	4.19	15.83	21.40	16.15	5.06	0.88	0.36	2.38	51.7	2190	8085	1709	54.0	4.01			
100	0.28	0.35	4.21	14.62	19.63	15.92	5.87	0.89	0.36	1.89	46.2	1860	6278	1522	49.8	3.33			
105	0.27	0.35	4.21	15.36	22.30	17.40	6.02	0.91	0.35	1.29	37.9	1524	4081	1355	40.9	2.38			
110	0.27	0.34	3.90	13.17	21.24	16.67	6.03	0.92	0.34	1.00	19.8	695	2348	490	26.9	1.69			
115	0.26	0.34	3.49	9.65	19.65	13.60	5.88	0.94	0.33	1.00	12.96	620	322	644	16.21	1.47			
120	0.26	0.33	2.76	7.82	15.43	11.15	5.48	0.95	0.32	1.10	9.75	50.9	113	46.8	15.20	1.47			
125	0.26	0.31	2.57	8.55	14.88	10.42	4.64	0.97	0.32	1.13	13.11	633	962	383	18.51	1.51			
130	0.24	0.27	1.86	4.87	8.46	6.00	3.53	0.88	0.31	0.99	14.8	71.4	710	36.9	17.47	1.48			
135	0.23	0.21	1.46	4.21	9.67	4.50	2.65	0.69	0.30	0.80	12.55	31.2	61.1	30.2	13.74	1.22			
140	0.23	0.15	1.07	3.46	5.09	3.60	1.88	0.47	0.28	0.64	8.83	31.7	39.3	31.6	9.90	0.59			
145	0.23	0.15	0.89	2.59	3.71	2.94	1.31	0.32	0.26	0.56	4.85	23.9	35.4	21.9	4.26	0.36			
150	0.23	0.15	0.65	2.15	2.79	2.15	0.84	0.24	0.24	0.49	2.11	9.33	20.75	8.24	2.18	0.35			
155	0.23	0.14	0.52	1.39	1.87	1.02	0.58	0.17	0.23	0.45	1.97	2.08	5.00	1.96	1.98	0.31			
160	0.23	0.14	0.38	0.75	1.05	0.55	0.48	0.16	0.21	0.44	0.46	2.15	4.27	2.23	0.19	0.31			
165	0.22	0.14	0.18	0.27	0.44	0.16	0.28	0.15	0.21	0.38	0.23	0.19	1.13	0.08	0.19	0.27			
170	0.22	0.21	0.14	0.01	0.11	0.15	0.23	0.15	0.20	0.36	0.30	0.12	0.28	0.11	0.30	0.26			
175	0.22	0.27	0.14	0.01	0.03	0.00	0.16	0.15	0.20	0.36	0.33	0.58	0.58	0.56	0.31	0.26			
180	0.22	0.31	0.14	0.01	0.00	0.00	0.13	0.15	0.21	0.31	0.19	0.02	0.00	0.02	0.05	0.24			

C Range: 0 - 360DEG  
 C Interval: 22.5DEG  
 Test Speed: HIGH  
 Temperature:25.3℃  
 Operators:DAMIN  
 Test Date:2023-11-16

γ Range: 0 - 180DEG  
 γ Interval: 5.0DEG  
 Test System:EVERFINE GO-2000B\_V1 SYSTEM V2.00.473  
 Humidity:65.0%  
 Test Distance:9.401m [K=1.0000]  
 Remarks: