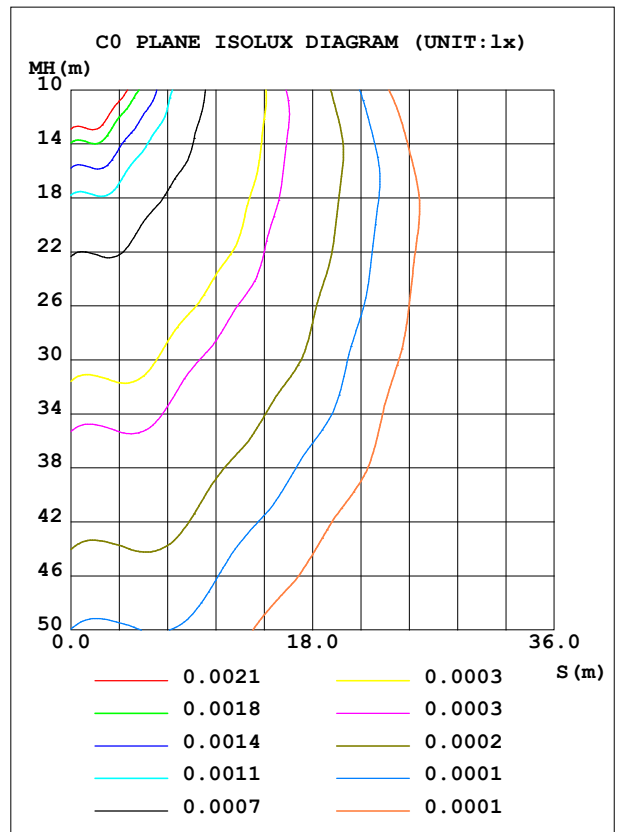
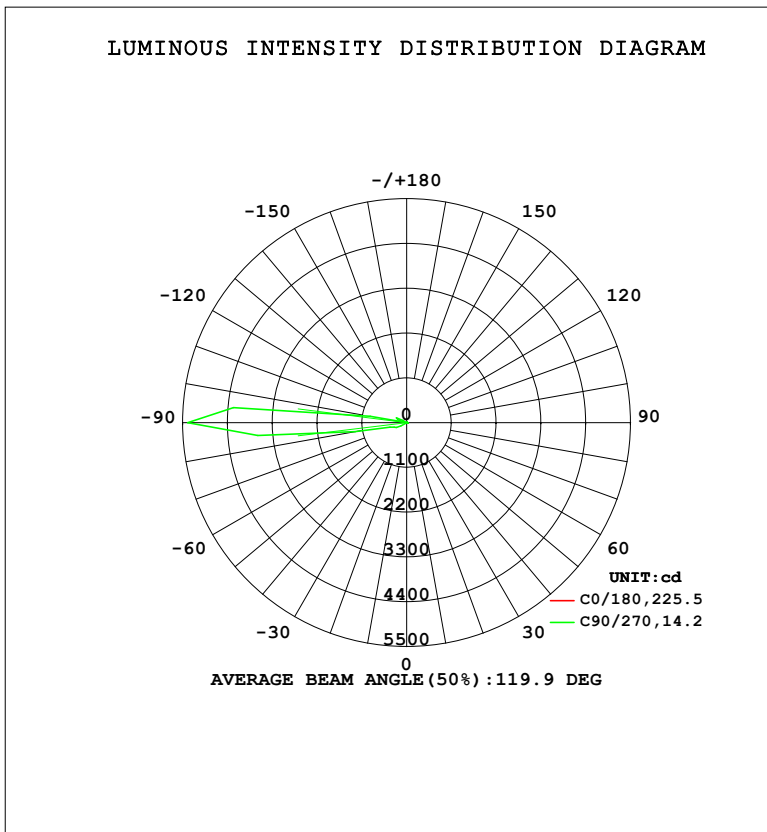


LUMINAIRE PHOTOMETRIC TEST REPORT

Test:U:220.33V I:0.0483A P:5.2822W PF:0.4959 Freq:50.00Hz Lamp Flux:518.801x1 lm		
NAME: 壁灯	TYPE: W系列	WEIGHT:
SPEC.:	DIM.:	SERIAL No.:
MFR.: EVERFINE	SUR.: 156.5mm	Shielding Angle:

DATA OF LAMP		PHOTOMETRIC DATA				Eff: 98.22 lm/W
MODEL	W06B	I _{max} (cd)	5380	S/MH (C0/180)	0.83	
NOMINAL POWER (W)	5	LOR (%)	100.0	S/MH (C90/270)	80.96	
RATED VOLTAGE (V)	220	TOTAL FLUX (lm)	518.80	η UP, DN (C0-180)	0.4, 0.4	
NOMINAL FLUX (lm)	518.801	CIE CLASS	DIFFUSE	η UP, DN (C180-360)	47.4, 51.8	
LAMPS INSIDE	1	η up (%)	47.8	CIBSE SHR NOM	0.00	
TEST VOLTAGE (V)	219.5	η down (%)	52.2	CIBSE SHR MAX	0.00	



C Range: 0 - 360DEG
 C Interval: 22.5DEG
 Test Speed: HIGH
 Temperature: 25.3°C
 Operators: DAMIN
 Test Date: 2023-11-17

γ Range: 0 - 180DEG
 γ Interval: 5.0DEG
 Test System: EVERFINE GO-2000B_V1 SYSTEM V2.00.473
 Humidity: 65.0%
 Test Distance: 9.401m [K=1.0000]
 Remarks:

ZONAL FLUX DIAGRAM

ZONAL FLUX DIAGRAM:

γ	C0	C45	C90	C135	C180	C225	C270	C315	γ	Φ zone	Φ total	%lum,lamp
10	0.1149	0.0917	0.0868	0.0868	0.0973	0.2329	0.3472	0.2776	0- 10	0.0125	0.0125	0.00,0.00
20	0.0915	0.0565	0.0607	0.0607	0.0759	0.4021	0.7205	0.4512	10- 20	0.0480	0.0604	0.01,0.01
30	0.0798	0.0494	0.1558	0.0607	0.0643	0.6209	1.606	0.7028	20- 30	0.1186	0.1791	0.03,0.03
40	0.0682	0.0564	0.3812	0.0607	0.0643	0.9951	2.881	1.120	30- 40	0.2790	0.4581	0.09,0.09
50	0.0623	0.1479	2.018	0.0953	0.0643	1.595	6.552	1.892	40- 50	0.5948	1.053	0.20,0.20
60	0.0604	0.2890	3.676	0.2166	0.0643	1.947	163.4	2.516	50- 60	3.141	4.194	0.81,0.81
70	0.0604	0.4653	4.145	0.3814	0.0643	2.173	330.6	2.906	60- 70	18.33	22.53	4.34,4.34
80	0.0604	0.5923	4.553	0.5722	0.0643	2.511	1288	3.383	70- 80	52.81	75.34	14.5,14.5
90	0.0604	0.5925	4.077	0.6245	0.0643	2.645	5380	3.556	80- 90	195.4	270.7	52.2,52.2
100	0.0604	0.6134	3.635	0.7453	0.0565	0.6897	917.0	0.9186	90-100	198.7	469.4	90.5,90.5
110	0.0604	0.5714	3.661	0.7632	0.0526	2.024	226.8	1.963	100-110	27.55	497.0	95.8,95.8
120	0.0604	0.4163	2.509	0.6160	0.0467	1.797	116.7	2.253	110-120	19.24	516.2	99.5,99.5
130	0.0545	0.1765	1.834	0.3039	0.0428	0.7582	2.676	0.5612	120-130	2.183	518.4	99.9,99.9
140	0.0506	0.0847	0.5918	0.1562	0.0409	0.1974	1.014	0.1733	130-140	0.2922	518.7	100,100
150	0.0506	0.0142	0.2171	0.0434	0.0312	0.0071	0.3291	0	140-150	0.0762	518.8	100,100
160	0.0506	0	0.0001	0.0087	0.0312	0	0	0	150-160	0.0228	518.8	100,100
170	0.0506	0	0	0	0.0312	0	0	0	160-170	0.0089	518.8	100,100
180	0.0350	0	0	0	0.0312	0	0	0	170-180	0.0031	518.8	100,100
DEG	LUMINOUS INTENSITY:cd									UNIT:lm		

Conical surface Flux(90deg): 0.69453 lm

%lum = 0.1%

%lamp = 0.1%

Conical surface Flux(130deg): 10.409 lm

%lum = 2.0%

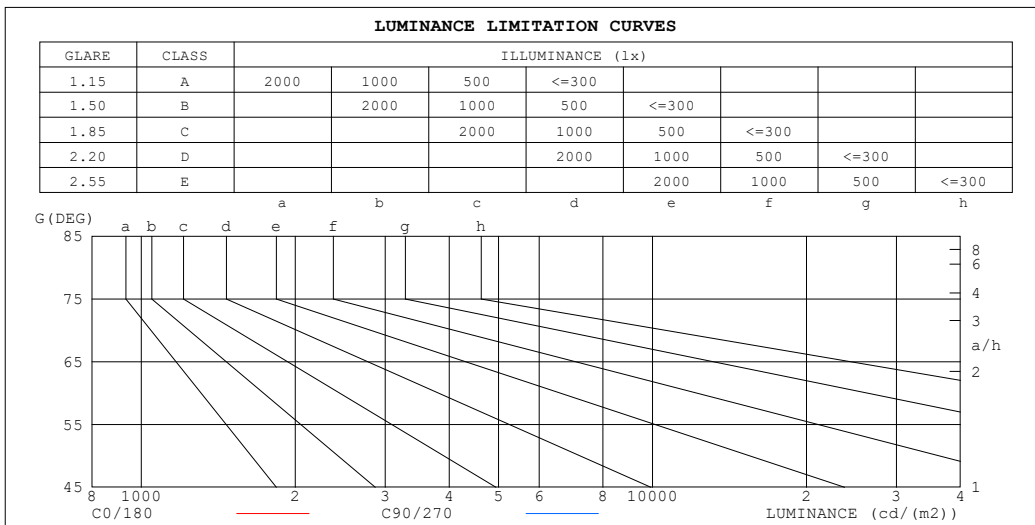
%lamp = 2.0%

C Range: 0 - 360DEG
 C Interval: 22.5DEG
 Test Speed: HIGH
 Temperature:25.3°C
 Operators:DAMIN
 Test Date:2023-11-17

γ Range: 0 - 180DEG
 γ Interval: 5.0DEG
 Test System:EVERFINE GO-2000B_V1 SYSTEM V2.00.473
 Humidity:65.0%
 Test Distance:9.401m [K=1.0000]
 Remarks:

LUMINANCE LIMITATION CURVES

Test:U:220.33V I:0.0483A P:5.2822W PF:0.4959 Freq:50.00Hz Lamp Flux:518.801x1 lm		
NAME: 壁灯	TYPE: W系列	WEIGHT:
SPEC.:	DIM.:	SERIAL No.:
MFR.: EVERFINE	SUR.: 156.5mm	Shielding Angle:



LUMINANCE cd/(m2)		
G (DEG)	C0/180	C90/270
85	21	354
80	11	182
75	7	120
70	5	84
65	4	64
60	4	51
55	3	37
50	3	22
45	3	9

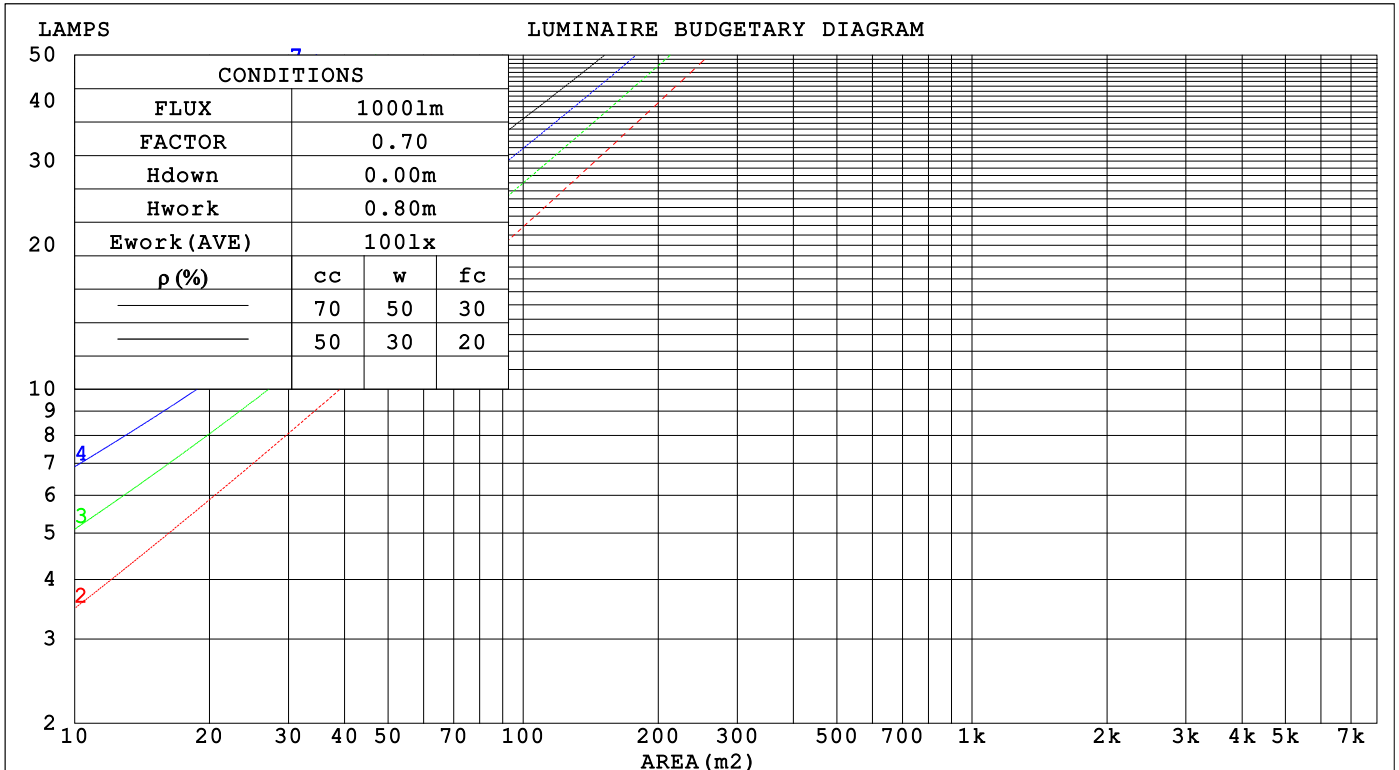
C Range: 0 - 360DEG
 C Interval: 22.5DEG
 Test Speed: HIGH
 Temperature: 25.3°C
 Operators: DAMIN
 Test Date: 2023-11-17

γ Range: 0 - 180DEG
 γ Interval: 5.0DEG
 Test System: EVERFINE GO-2000B_V1 SYSTEM V2.00.473
 Humidity: 65.0%
 Test Distance: 9.401m [K=1.0000]
 Remarks:

CU AND LUMINAIRE BUDGETARY ESTIMATE DIAGRAM

Test:U:220.33V I:0.0483A P:5.2822W PF:0.4959 Freq:50.00Hz Lamp Flux:518.801x1 lm		
NAME: 壁灯	TYPE: W系列	WEIGHT:
SPEC.:	DIM.:	SERIAL No.:
MFR.: EVERFINE	SUR.: 156.5mm	Shielding Angle:

ρ_{cc}	80%			70%			50%			30%			10%			0
ρ_w	50%	30%	10%	50%	30%	10%	50%	30%	10%	50%	30%	10%	50%	30%	10%	0
ρ_{fc}	20%			20%			20%			20%			20%			0
RCR	RCR:Room Cavity Ratio			Coefficients of Utilization(CU)												
0.0	1.08	1.08	1.08	.00	.00	.00	.85	.85	.85	.71	.71	.71	.58	.58	.58	.52
1.0	.73	.63	.54	.65	.57	.49	.52	.45	.38	.39	.34	.29	.28	.23	.19	.13
2.0	.59	.48	.39	.53	.43	.34	.41	.33	.26	.31	.24	.18	.21	.15	.11	.05
3.0	.51	.39	.30	.45	.35	.27	.35	.27	.20	.26	.19	.14	.17	.12	.07	.02
4.0	.44	.33	.24	.40	.29	.22	.31	.23	.16	.23	.16	.11	.15	.10	.06	.01
5.0	.39	.28	.20	.35	.25	.18	.27	.19	.13	.20	.14	.09	.14	.09	.04	.01
6.0	.35	.25	.17	.31	.22	.15	.25	.17	.11	.18	.12	.08	.12	.08	.04	.00
7.0	.32	.22	.15	.28	.19	.13	.22	.15	.10	.17	.11	.06	.12	.07	.03	.00
8.0	.29	.19	.13	.26	.17	.11	.20	.14	.09	.15	.10	.06	.11	.06	.03	.00
9.0	.26	.17	.11	.24	.16	.10	.19	.12	.08	.14	.09	.05	.10	.06	.03	.00
10.0	.24	.16	.10	.22	.14	.09	.17	.11	.07	.13	.08	.04	.10	.05	.02	.00



C Range: 0 - 360DEG
 C Interval: 22.5DEG
 Test Speed: HIGH
 Temperature:25.3°C
 Operators:DAMIN
 Test Date:2023-11-17

γ Range: 0 - 180DEG
 γ Interval: 5.0DEG
 Test System:EVERFINE GO-2000B_V1 SYSTEM V2.00.473
 Humidity:65.0%
 Test Distance:9.401m [K=1.0000]
 Remarks:

WEC AND CCEC

Test:U:220.33V I:0.0483A P:5.2822W PF:0.4959 Freq:50.00Hz								
Lamp Flux:518.801x1 lm								
NAME: 壁灯			TYPE: W系列			WEIGHT:		
SPEC.:			DIM.:			SERIAL No.:		
MFR.: EVERFINE			SUR.: 156.5mm			Shielding Angle:		

ρ_{CC}	80%			70%			50%			30%			10%			0
ρ_w	50%	30%	10%	50%	30%	10%	50%	30%	10%	50%	30%	10%	50%	30%	10%	0
ρ_{fc}	20%			20%			20%			20%			20%			0
RCR	RCR:Room Cavity Ratio						Wall Exitance Coefficients (WEC)									
0.0																
1.0	.689	.392	.124	.666	.380	.121	.624	.358	.114	.585	.338	.108	.550	.319	.103	
2.0	.479	.263	.081	.459	.253	.078	.420	.234	.073	.385	.216	.068	.352	.199	.063	
3.0	.379	.202	.060	.361	.193	.058	.325	.176	.054	.293	.161	.049	.263	.146	.045	
4.0	.318	.165	.049	.301	.158	.047	.269	.143	.043	.239	.129	.039	.212	.115	.035	
5.0	.276	.141	.041	.261	.134	.039	.231	.120	.035	.204	.108	.032	.178	.095	.029	
6.0	.245	.123	.035	.231	.117	.034	.204	.104	.030	.179	.093	.027	.155	.082	.024	
7.0	.221	.109	.031	.208	.103	.029	.183	.092	.027	.159	.082	.024	.137	.071	.021	
8.0	.201	.098	.028	.189	.093	.026	.166	.083	.024	.144	.073	.021	.124	.064	.019	
9.0	.185	.089	.025	.174	.085	.024	.152	.075	.021	.132	.066	.019	.113	.057	.017	
10.0	.171	.082	.023	.161	.078	.022	.141	.069	.019	.122	.060	.017	.104	.052	.015	

ρ_{CC}	80%			70%			50%			30%			10%			0
ρ_w	50%	30%	10%	50%	30%	10%	50%	30%	10%	50%	30%	10%	50%	30%	10%	0
ρ_{fc}	20%			20%			20%			20%			20%			0
RCR	RCR:Room Cavity Ratio						Ceiling Cavity Exitance Coefficients (CCEC)									
0.0	.555	.555	.555	.474	.474	.474	.324	.324	.324	.186	.186	.186	.059	.059	.059	
1.0	.574	.520	.472	.491	.446	.406	.336	.307	.281	.193	.178	.163	.062	.057	.053	
2.0	.567	.501	.445	.486	.431	.385	.333	.298	.268	.192	.173	.157	.062	.056	.051	
3.0	.557	.487	.431	.478	.420	.373	.328	.292	.262	.189	.170	.154	.061	.055	.051	
4.0	.547	.476	.421	.470	.411	.366	.323	.287	.258	.187	.168	.153	.060	.055	.050	
5.0	.538	.467	.415	.462	.404	.361	.318	.282	.255	.184	.166	.151	.059	.054	.050	
6.0	.529	.460	.410	.454	.398	.357	.313	.279	.253	.182	.164	.150	.059	.054	.050	
7.0	.520	.454	.407	.448	.393	.355	.309	.276	.251	.180	.162	.150	.058	.053	.049	
8.0	.513	.448	.404	.441	.389	.352	.305	.273	.250	.178	.161	.149	.057	.053	.049	
9.0	.506	.444	.402	.436	.385	.351	.302	.271	.249	.176	.160	.149	.057	.052	.049	
10.0	.499	.440	.400	.430	.382	.349	.299	.269	.248	.174	.159	.148	.056	.052	.049	

C Range: 0 - 360DEG
 C Interval: 22.5DEG
 Test Speed: HIGH
 Temperature:25.3°C
 Operators:DAMIN
 Test Date:2023-11-17

γ Range: 0 - 180DEG
 γ Interval: 5.0DEG
 Test System:EVERFINE GO-2000B_V1 SYSTEM V2.00.473
 Humidity:65.0%
 Test Distance:9.401m [K=1.0000]
 Remarks:

UGR(Unified Glare Rating) Table

Test:U:220.33V I:0.0483A P:5.2822W PF:0.4959 Freq:50.00Hz										
Lamp Flux:518.80lx1 lm										
NAME: 壁灯			TYPE: W系列				WEIGHT:			
SPEC.:			DIM.:				SERIAL No.:			
MFR.: EVERFINE			SUR.: 156.5mm				Shielding Angle:			
ceiling/cavity	0.7	0.7	0.5	0.5	0.3	0.7	0.7	0.5	0.5	0.3
walls	0.5	0.3	0.5	0.3	0.3	0.5	0.3	0.5	0.3	0.3
working plane	0.2	0.2	0.2	0.2	0.2	0.2	0.2	0.2	0.2	0.2
Room dimensions	Viewed crosswise					Viewed endwise				
x = 2H y = 2H	-31.0	-29.7	-30.1	-28.8	-27.6	-10.2	-9.0	-9.4	-8.1	-6.9
3H	-27.3	-26.2	-26.5	-25.2	-24.0	-5.5	-4.3	-4.6	-3.4	-2.2
4H	-25.0	-23.9	-24.1	-22.9	-21.7	-3.1	-2.0	-2.2	-1.0	0.2
6H	-22.3	-21.2	-21.4	-20.2	-19.0	-0.6	0.4	0.2	1.4	2.6
8H	-20.7	-19.7	-19.8	-18.7	-17.5	0.7	1.7	1.6	2.7	3.9
12H	-19.0	-18.0	-18.1	-17.0	-15.8	2.0	3.0	2.9	4.0	5.3
4H 2H	-19.8	-18.7	-18.9	-17.7	-16.5	-10.4	-9.3	-9.6	-8.4	-7.1
3H	-19.6	-18.6	-18.7	-17.6	-16.4	-5.1	-4.1	-4.2	-3.1	-1.9
4H	-19.4	-18.5	-18.5	-17.5	-16.2	-2.3	-1.4	-1.4	-0.4	0.9
6H	-18.8	-17.9	-17.9	-16.9	-15.6	0.5	1.4	1.4	2.4	3.7
8H	-18.1	-17.3	-17.2	-16.3	-15.0	2.0	2.8	2.9	3.8	5.1
12H	-17.0	-16.2	-16.1	-15.2	-13.9	3.4	4.2	4.4	5.2	6.6
8H 4H	-12.6	-11.7	-11.6	-10.7	-9.4	-2.5	-1.6	-1.5	-0.6	0.7
6H	-12.5	-11.7	-11.5	-10.7	-9.3	0.8	1.6	1.8	2.6	4.0
8H	-12.4	-11.7	-11.4	-10.7	-9.3	2.7	3.4	3.6	4.4	5.8
12H	-12.2	-11.6	-11.2	-10.5	-9.2	4.5	5.1	5.5	6.2	7.6
12H 4H	-9.8	-8.9	-8.8	-7.9	-6.6	-2.6	-1.7	-1.6	-0.7	0.6
6H	-9.4	-8.7	-8.5	-7.7	-6.3	0.8	1.5	1.7	2.5	3.9
8H	-9.4	-8.7	-8.4	-7.6	-6.3	2.7	3.4	3.7	4.4	5.8
Variations with the observer position at spacings(CIE Pub.117):										
S = 1.0H	+ 0.2 / - 0.1					+ 0.1 / - 0.2				
1.5H	+ 0.3 / - 0.2					+ 0.3 / - 0.3				
2.0H	+ 0.6 / - 0.7					+ 0.4 / - 0.5				

CIE Pub.117, 518.8 lm Total Lamp Luminous Flux Correct (8log(F/F0) = -2.3)
 Area: 0.1 m2

C Range: 0 - 360DEG
 C Interval: 22.5DEG
 Test Speed: HIGH
 Temperature:25.3°C
 Operators:DAMIN
 Test Date:2023-11-17

γ Range: 0 - 180DEG
 γ Interval: 5.0DEG
 Test System:EVERFINE GO-2000B_V1 SYSTEM V2.00.473
 Humidity:65.0%
 Test Distance:9.401m [K=1.0000]
 Remarks:

UTILIZATION FACTORS TABLE

Test:U:220.33V I:0.0483A P:5.2822W PF:0.4959 Freq:50.00Hz Lamp Flux:518.801x1 lm		
NAME: 壁灯	TYPE: W系列	WEIGHT:
SPEC.:	DIM.:	SERIAL No.:
MFR.: EVERFINE	SUR.: 156.5mm	Shielding Angle:

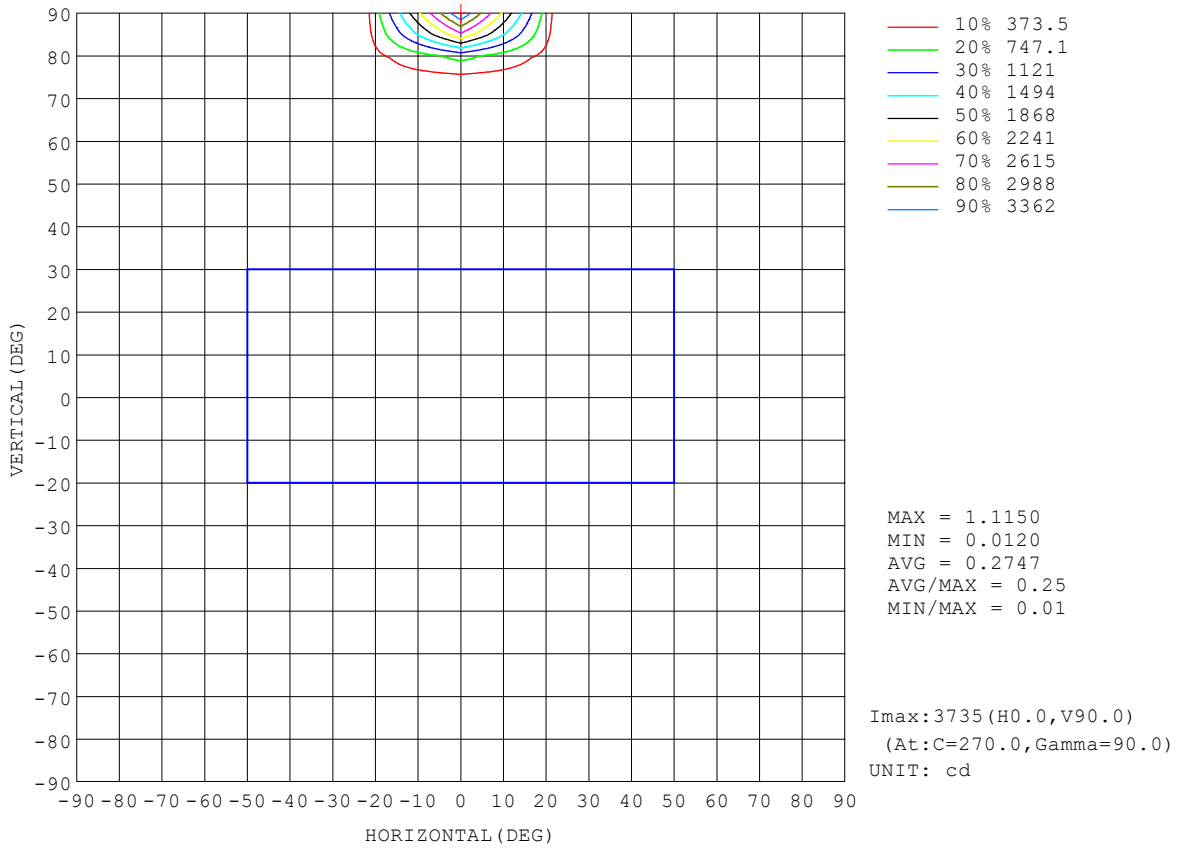
REFLECTANCE										
Ceiling	0.8	0.8	0.8	0.7	0.7	0.7	0.5	0.5	0.5	0
Walls	0.7	0.5	0.3	0.7	0.5	0.3	0.7	0.5	0.3	0
Working plane	0.2	0.2	0.2	0.2	0.2	0.2	0.2	0.2	0.2	0
ROOM INDEX	UTILIZATION FACTORS (PERCENT) $k(RI) \times RCR = 5$									
k = 0.60	29	15	7	28	15	7	26	14	6	-0
0.80	36	19	9	34	18	9	30	17	8	0
1.00	41	23	12	38	22	11	34	22	10	0
1.25	46	28	15	43	26	14	38	23	13	1
1.50	50	31	18	47	29	17	40	26	15	1
2.00	57	38	24	53	35	22	45	30	19	3
2.50	62	43	29	57	40	27	48	34	23	5
3.00	66	48	34	61	44	31	51	38	26	7
4.00	72	55	41	66	51	38	55	43	32	10
5.00	76	61	48	70	56	44	58	47	37	13
ROOM INDEX	UF(total)									Direct
According to DIN EN 13032-2 2004			Suspended				SHRNOM = 1.25			

C Range: 0 - 360DEG
 C Interval: 22.5DEG
 Test Speed: HIGH
 Temperature: 25.3°C
 Operators: DAMIN
 Test Date: 2023-11-17

γ Range: 0 - 180DEG
 γ Interval: 5.0DEG
 Test System: EVERFINE GO-2000B_V1 SYSTEM V2.00.473
 Humidity: 65.0%
 Test Distance: 9.401m [K=1.0000]
 Remarks:

ISOCANDELA DIAGRAM

Test:U:220.33V I:0.0483A P:5.2822W PF:0.4959 Freq:50.00Hz Lamp Flux:518.801x1 lm		
NAME: 壁灯	TYPE: W系列	WEIGHT:
SPEC.:	DIM.:	SERIAL No.:
MFR.: EVERFINE	SUR.: 156.5mm	Shielding Angle:

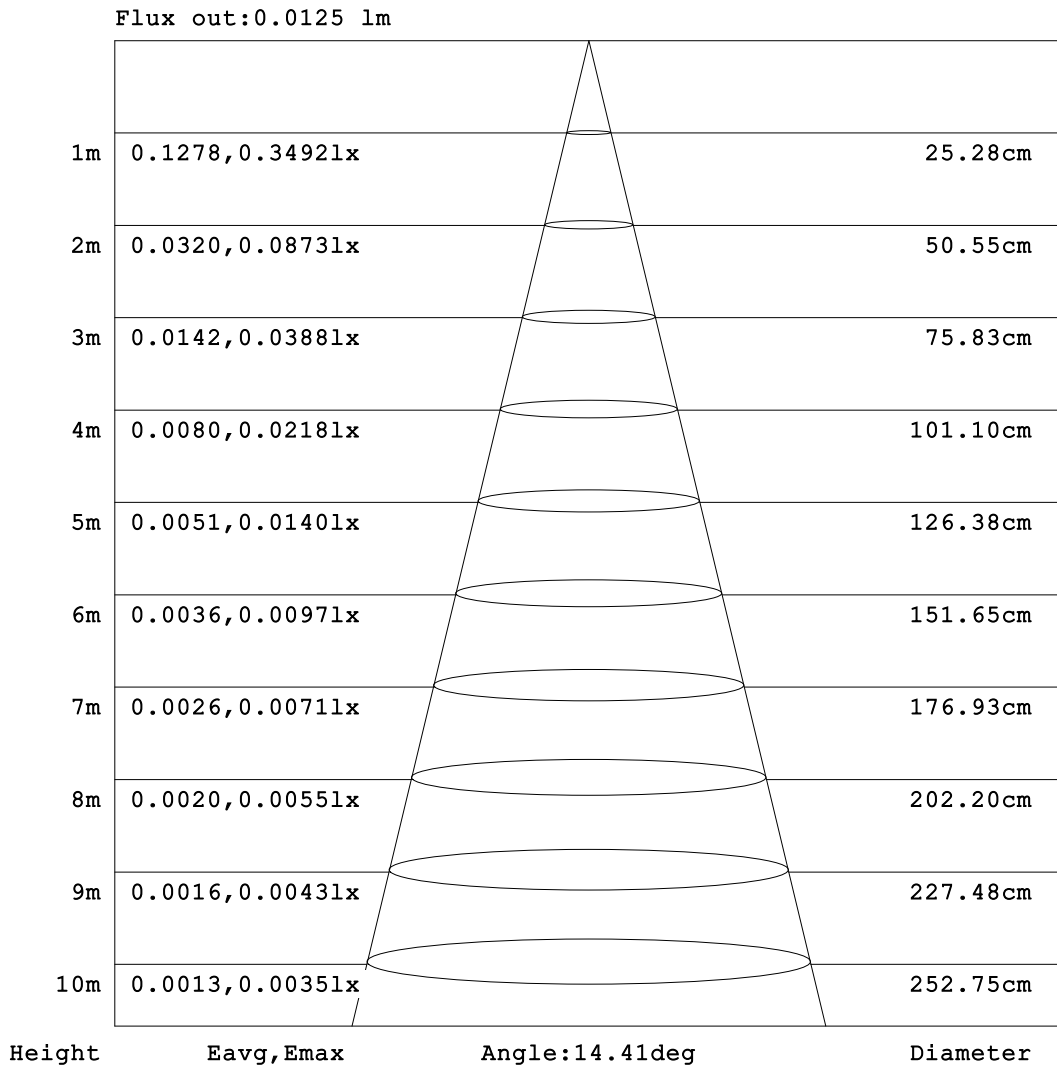


C Range: 0 - 360DEG
 C Interval: 22.5DEG
 Test Speed: HIGH
 Temperature:25.3°C
 Operators:DAMIN
 Test Date:2023-11-17

γ Range: 0 - 180DEG
 γ Interval: 5.0DEG
 Test System:EVERFINE GO-2000B_V1 SYSTEM V2.00.473
 Humidity:65.0%
 Test Distance:9.401m [K=1.0000]
 Remarks:

AAI Figure

Test:U:220.33V I:0.0483A P:5.2822W PF:0.4959 Freq:50.00Hz Lamp Flux:518.801x1 lm		
NAME: 壁灯	TYPE: W系列	WEIGHT:
SPEC.:	DIM.:	SERIAL No.:
MFR.: EVERFINE	SUR.: 156.5mm	Shielding Angle:



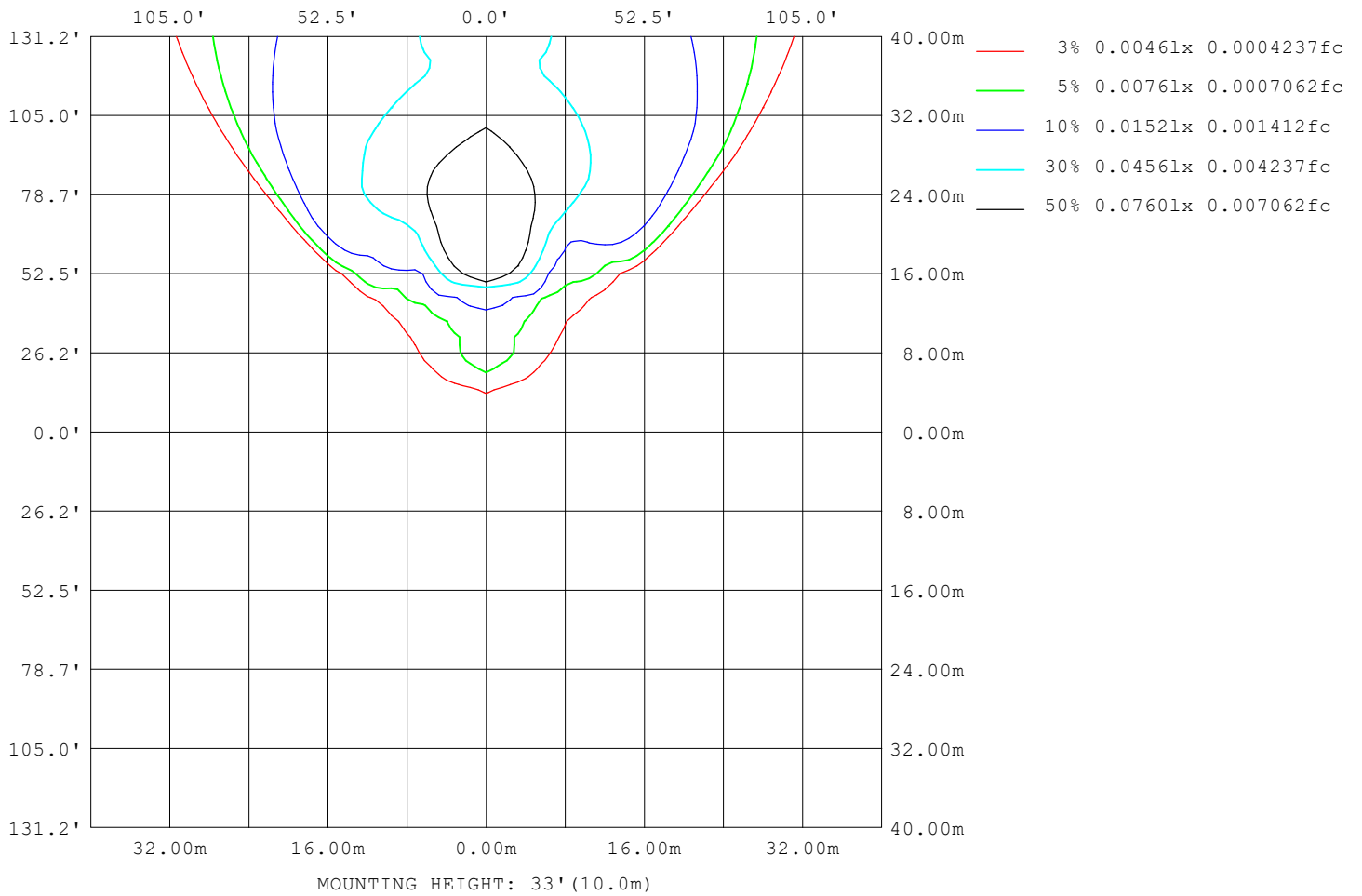
Note:The Curves indicate the illuminated area and the average illumination when the luminaire is at different distance.

C Range: 0 - 360DEG
C Interval: 22.5DEG
Test Speed: HIGH
Temperature:25.3°C
Operators:DAMIN
Test Date:2023-11-17

γ Range: 0 - 180DEG
γ Interval: 5.0DEG
Test System:EVERFINE GO-2000B_V1 SYSTEM V2.00.473
Humidity:65.0%
Test Distance:9.401m [K=1.0000]
Remarks:

ISOLUX DIAGRAM

Test:U:220.33V I:0.0483A P:5.2822W PF:0.4959 Freq:50.00Hz Lamp Flux:518.801x1 lm		
NAME: 壁灯	TYPE: W系列	WEIGHT:
SPEC.:	DIM.:	SERIAL No.:
MFR.: EVERFINE	SUR.: 156.5mm	Shielding Angle:



C Range: 0 - 360DEG
 C Interval: 22.5DEG
 Test Speed: HIGH
 Temperature: 25.3°C
 Operators: DAMIN
 Test Date: 2023-11-17

γ Range: 0 - 180DEG
 γ Interval: 5.0DEG
 Test System: EVERFINE GO-2000B_V1 SYSTEM V2.00.473
 Humidity: 65.0%
 Test Distance: 9.401m [K=1.0000]
 Remarks:

LED Avg.L Report

Test:U:220.33V I:0.0483A P:5.2822W PF:0.4959 Freq:50.00Hz Lamp Flux:518.801x1 lm		
NAME: 壁灯	TYPE: W系列	WEIGHT:
SPEC.:	DIM.:	SERIAL No.:
MFR.: EVERFINE	SUR.: 156.5mm	Shielding Angle:

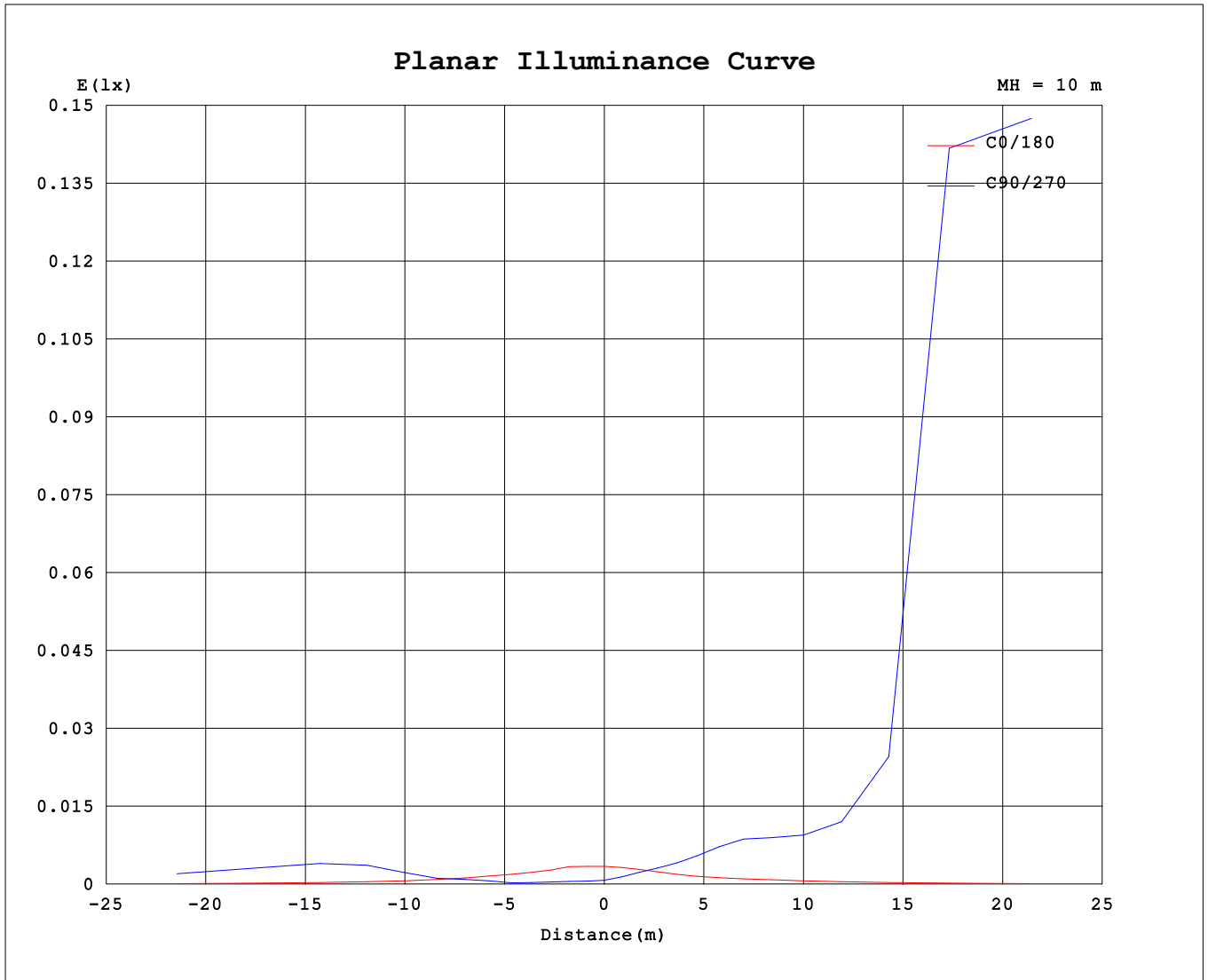
AvgL	cd/m2
L_0~180 (65) av	1
L_0~180 (75) av	2
L_0~180 (85) av	7
L_90~270 (65) av	3376
L_90~270 (75) av	8399
L_90~270 (85) av	211056
L_45 (65) av	32
L_45 (75) av	62
L_45 (85) av	213

Standard: GB/T 29293-2012

C Range: 0 - 360DEG
C Interval: 22.5DEG
Test Speed: HIGH
Temperature:25.3℃
Operators:DAMIN
Test Date:2023-11-17

γ Range: 0 - 180DEG
γ Interval: 5.0DEG
Test System:EVERFINE GO-2000B_V1 SYSTEM V2.00.473
Humidity:65.0%
Test Distance:9.401m [K=1.0000]
Remarks:

Planar Illuminance Curve



C Range: 0 - 360DEG
 C Interval: 22.5DEG
 Test Speed: HIGH
 Temperature: 25.3°C
 Operators: DAMIN
 Test Date: 2023-11-17

γ Range: 0 - 180DEG
 γ Interval: 5.0DEG
 Test System: EVERFINE GO-2000B_V1 SYSTEM V2.00.473
 Humidity: 65.0%
 Test Distance: 9.401m [K=1.0000]
 Remarks:

LUMINOUS DISTRIBUTION INTENSITY DATA

Test:U:220.33V I:0.0483A P:5.2822W PF:0.4959 Freq:50.00Hz Lamp Flux:518.801x1 lm		
NAME: 壁灯	TYPE: W系列	WEIGHT:
SPEC.:	DIM.:	SERIAL No.:
MFR.: EVERFINE	SUR.: 156.5mm	Shielding Angle:

Table--1

UNIT: cd

C (DEG) γ (DEG)	0	22.5	45	67.5	90	112.5	135	157.5	180	202.5	225	247.5	270	292.5	315	337.5			
0	0.11	0.11	0.11	0.11	0.11	0.11	0.11	0.11	0.11	0.11	0.11	0.11	0.11	0.11	0.11	0.11			
5	0.11	0.10	0.10	0.11	0.10	0.11	0.10	0.06	0.11	0.12	0.16	0.24	0.21	0.26	0.18	0.15			
10	0.11	0.07	0.09	0.11	0.09	0.11	0.09	0.04	0.10	0.14	0.23	0.53	0.35	0.53	0.28	0.23			
15	0.10	0.03	0.06	0.11	0.08	0.11	0.08	0.04	0.09	0.16	0.32	0.81	0.50	0.79	0.37	0.28			
20	0.09	0.01	0.06	0.15	0.06	0.11	0.06	0.04	0.08	0.18	0.40	1.22	0.72	1.22	0.45	0.34			
25	0.08	0.01	0.05	0.26	0.06	0.15	0.06	0.04	0.07	0.21	0.49	1.75	1.06	1.75	0.57	0.41			
30	0.08	0.01	0.05	0.51	0.16	0.28	0.06	0.04	0.06	0.24	0.62	2.58	1.61	2.52	0.70	0.51			
35	0.07	0.01	0.05	0.60	0.25	0.45	0.06	0.04	0.06	0.27	0.78	3.86	2.29	3.84	0.89	0.58			
40	0.07	0.01	0.06	0.85	0.38	0.64	0.06	0.06	0.06	0.30	1.00	5.06	2.88	5.14	1.12	0.70			
45	0.06	0.01	0.08	1.51	0.93	0.89	0.06	0.08	0.06	0.34	1.34	5.93	3.87	6.04	1.53	0.85			
50	0.06	0.01	0.15	3.22	2.02	1.51	0.10	0.11	0.06	0.38	1.59	8.05	6.55	7.92	1.89	0.96			
55	0.06	0.01	0.20	5.31	3.08	2.83	0.15	0.13	0.06	0.43	1.83	13.84	18.8	11.14	2.26	1.07			
60	0.06	0.01	0.29	7.02	3.68	4.48	0.22	0.13	0.06	0.47	1.95	28.83	163	24.01	2.52	1.21			
65	0.06	0.01	0.37	8.00	3.89	6.14	0.29	0.13	0.06	0.51	2.04	116	282	67.3	2.71	1.26			
70	0.06	0.01	0.47	8.62	4.14	7.40	0.38	0.13	0.06	0.54	2.17	448	331	349	2.91	1.30			
75	0.06	0.01	0.53	9.13	4.46	8.34	0.48	0.13	0.06	0.57	2.36	592	430	574	3.10	1.36			
80	0.06	0.01	0.59	9.28	4.55	8.87	0.57	0.13	0.06	0.59	2.51	639	1288	615	3.38	1.41			
85	0.06	0.01	0.61	9.24	4.44	9.00	0.62	0.13	0.06	0.61	2.65	665	3675	640	3.56	1.45			
90	0.06	0.01	0.59	8.06	4.08	8.13	0.62	0.13	0.06	0.62	2.64	668	5380	638	3.56	1.49			
95	0.06	0.01	0.57	7.98	3.86	8.36	0.62	0.13	0.06	0.62	2.49	653	4274	614	3.32	1.51			
100	0.06	0.01	0.61	7.77	3.63	8.38	0.75	0.13	0.06	0.45	0.69	84.8	917	65.7	0.92	1.39			
105	0.06	0.01	0.65	8.05	4.07	9.17	0.76	0.13	0.05	0.37	0.46	325	85.8	222	0.87	0.90			
110	0.06	0.01	0.57	6.19	3.66	8.71	0.76	0.11	0.05	0.50	2.02	512	227	440	1.96	1.00			
115	0.06	0.00	0.49	4.53	3.26	7.09	0.71	0.11	0.05	0.50	2.00	236	279	138	2.59	0.94			
120	0.06	0.00	0.42	3.28	2.51	5.55	0.62	0.09	0.05	0.41	1.80	27.07	117	24.25	2.25	0.57			
125	0.06	0.00	0.29	3.61	2.63	4.14	0.44	0.04	0.04	0.33	1.29	7.04	7.75	7.77	1.48	0.38			
130	0.05	0.00	0.18	2.24	1.83	1.86	0.30	0.00	0.04	0.28	0.76	3.98	2.68	4.28	0.56	0.23			
135	0.05	0.00	0.14	1.28	1.42	1.05	0.24	0.00	0.04	0.21	0.05	2.75	1.46	2.88	0.07	0.09			
140	0.05	0.00	0.08	0.60	0.59	0.66	0.16	0.00	0.04	0.19	0.20	1.34	1.01	1.02	0.17	0.04			
145	0.05	0.00	0.06	0.40	0.36	0.34	0.10	0.00	0.03	0.18	0.13	0.19	0.10	0.24	0.08	0.00			
150	0.05	0.00	0.01	0.24	0.22	0.09	0.04	0.00	0.03	0.16	0.01	0.19	0.33	0.21	0.00	0.00			
155	0.05	0.00	0.00	0.00	0.07	0.00	0.01	0.00	0.03	0.14	0.00	0.17	0.07	0.17	0.00	0.00			
160	0.05	0.00	0.00	0.00	0.00	0.00	0.01	0.00	0.03	0.13	0.00	0.08	0.00	0.00	0.00	0.00			
165	0.05	0.02	0.00	0.00	0.00	0.00	0.00	0.00	0.03	0.12	0.00	0.00	0.00	0.00	0.00	0.00			
170	0.05	0.06	0.00	0.00	0.00	0.00	0.00	0.00	0.03	0.11	0.00	0.00	0.00	0.00	0.00	0.00			
175	0.04	0.08	0.00	0.00	0.00	0.00	0.00	0.00	0.03	0.10	0.00	0.00	0.00	0.00	0.00	0.00			
180	0.04	0.08	0.00	0.00	0.00	0.00	0.00	0.00	0.03	0.08	0.00	0.00	0.00	0.00	0.00	0.00			

C Range: 0 - 360DEG
 C Interval: 22.5DEG
 Test Speed: HIGH
 Temperature:25.3°C
 Operators:DAMIN
 Test Date:2023-11-17

γ Range: 0 - 180DEG
 γ Interval: 5.0DEG
 Test System:EVERFINE GO-2000B_V1 SYSTEM V2.00.473
 Humidity:65.0%
 Test Distance:9.401m [K=1.0000]
 Remarks: